

MAY WE
INTRODUCE:



CONMAXX[®]
Cable entry systems

One system – endless possibilities: CONMAXX by WISKA

As experts in cable glands we expand our product range with the modular CONMAXX system: The innovative 3-component modular system consists of a closed frame, variable grid inserts and conical sealing elements. It

offers significantly easier installation in cabinet applications and electrical housings. This is because it allows the housing to be assembled from the inside out – for more flexibility and time saving during assembly.

Maximum flexibility

Regardless of whether the cable diameter is large or small: with 100 different seals, the vast range of frame sizes and grid inserts CONMAXX enables an extremely flexible and individual electrical installation. The many possible combinations also reduce storage costs.

More security

The grid fixes into place with an audible click, thereby preventing assembly errors.

Split sealing inserts

Solutions for special cables, sleeves, as well as pre-fabricated cables and wires are no problem with CONMAXX.

High IP protection

All CONMAXX components guarantee protection to at least IP 66 and at the same time provide the cable with mechanical strain relief.



As easy as it gets – the installation of CONMAXX



Outside the cabinet:

- 1 Installation of frame onto the cabinet housing

Inside the cabinet:

- 2 Insert cables into the sealings
- 3 Place grid into the frame
- 4 Push sealing elements with cables into the grid



Robust and durable

Solid, glass fibre reinforced plastic frame and grid design, as well as halogen and silicon-free sealing inserts made from durable TPE. Extremely resistant to: Fuels, oils, grease, acids, bases and UV lighting. Also ideally suited to the rail industry thanks to the V0 fire protection class.

Easy installation

The integrated, permanent seal makes assembly much easier and ensures secure installation. In addition, mounting can be done using standard screws.

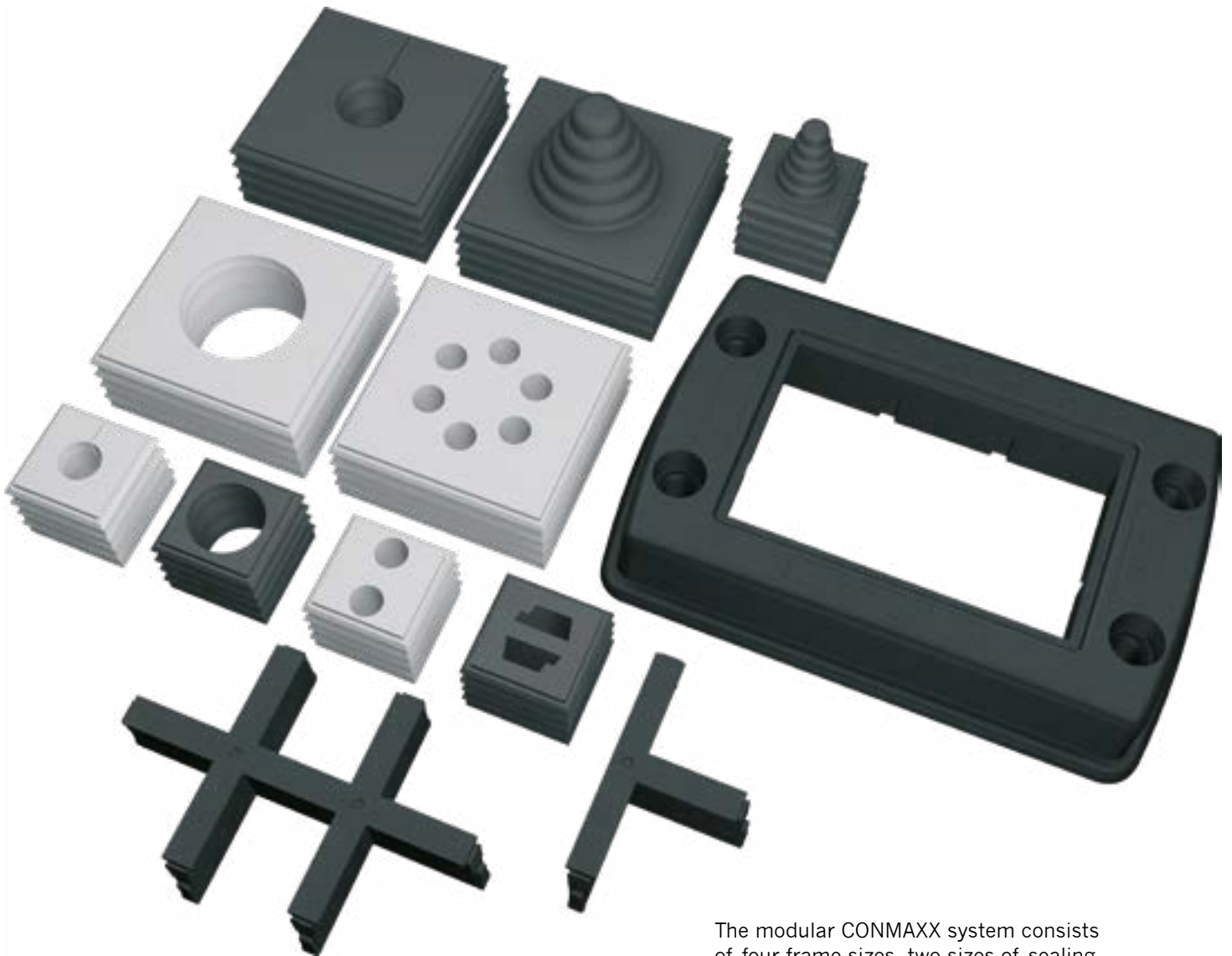
For extreme temperatures

Depending on the variant, CONMAXX can be used between -40 °C and 120 °C or from -40 °C to 90 °C.

Three components – endless product variants

The CONMAXX cable entry system offers customers a whole new dimension of flexibility. The three components can be compiled individually according to requirement and application. Even subsequent, individual

changes to the wiring are no problem and can be made at any time with this WISKA innovation. CONMAXX provides a better and easier solution to any installation requirement!



The modular CONMAXX system consists of four frame sizes, two sizes of sealing elements and four grid inserts. This way many installation possibilities can be realized.

Application examples



CF4/B1 with a multiple sealing insert



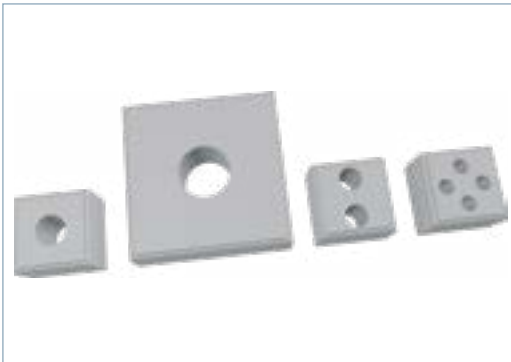
CF6/10 with T-grid, two small and one big sealing



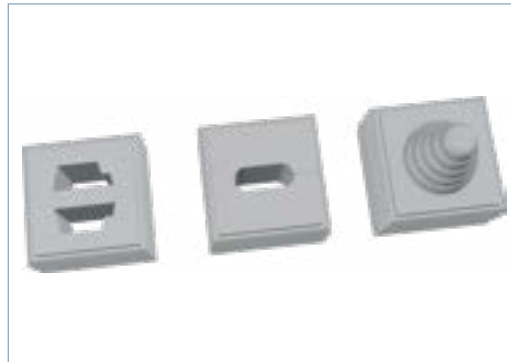
CF8/16 with vertical grid with two big sealings



CF10/24 with cross grid, double cross grid and single bar assembled with ten small sealings



Single and multiple sealing inserts also splitted for pre-fabricated cables



Special sealing inserts and flex protection

Many industries, one solution: CONMAXX

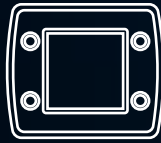
Due to the modular design and the many different variants, CONMAXX is already successfully used in a wide variety of industries: Rail industry, telecommunications, shipbuilding, energy

industry and many more. Regardless of the industry, quick, easy and secure assembly always gives you a competitive edge thanks to CONMAXX!

CONMAXX Frame

The glass fibre reinforced frame is especially lightweight and stable in shape. It can be easily fastened to any standard switchboard cut-

out for industrial plug connectors and then populated with cables – without any laborious opening and closing.



CF4/B1



CF6/10



CF8/16



CF10/24

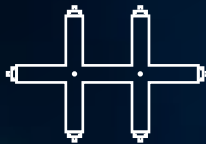
Technical data CONMAXX Frame

Protection class	IP 66
Operating temperatures	-40 °C - 120 °C
Fire protection class	UL 94 VO
Dimensions	87 x 70 mm, 106 x 70 mm, 126 x 70 mm, 153 x 70 mm
Material	Glass fiber reinforced polyamide
Colour	Black
Properties	Halogen and silicon-free

CONMAXX Grid

CONMAXX offers a large selection of widely varying grid inserts for any cable size and

installation variants. The frame can therefore be populated completely flexibly and individually.



CGH



CGX



CGT



CGV

Technical data CONMAXX grid

Protection class	IP 66
Operating temperatures	-40 °C - 120 °C
Fire protection class	UL 94 VO (grey), UL 94 HB (black)
Material	Solid 2-component technology: glass fiber reinforced polyamide, TPE
Colour	Black
Properties	Halogen and silicon-free
Variants	Cross grid, double cross grid, T-grid and single bar

CONMAXX Seal

Always the right sealing insert with approximately 100 different variants for prefabricated cables, standard wires, corrugated sleeves and special wires. The large selection of split and multiple

sealing elements also saves a great deal of assembly work. Due to their conical shape, the sealing elements can also be easily pushed in or out again.



CDGG



CDGU



CDKG



CDKU

Technical data CONMAXX Seal

Protection class	IP 66
Operating temperatures	-40 °C - 90 °C (grey), -40 °C - 120 °C (black)
Fire protection class	UL 94 VO (grey), UL 94 HB (black)
Dimensions	20,7 x 20,7 mm, 43,1 x 43,1 mm
Clamping range	2 mm - 33 mm
Material	TPE
Colour	Black, grey
Properties	Halogen and silicon-free, multi-resistant to fuels, oils, grease and UV radiation (black), as well as acid and base-resistant (grey)
Variants	Closed and split sealing inserts, multiple and special sealing inserts, flex protection insert

EXPLORE THESE PRODUCT RANGES:



Cable glands



Cable protection



Grommets

About WISKA®

We are one of the world's leading manufacturers of electrical equipment, maritime lighting solutions, and CCTV video surveillance for trade, industry and shipbuilding. Founded in 1919, today our family-owned company employs over 260 people worldwide. We operate our own research and development facilities and production plants at our headquarters in Germany and have a global network of representatives and subsidiaries who ensure a quick and effective on-site customer service for you.

Your expert for good times and quality manufacturing.
All products can be found at www.wiska.com

WISKA Hoppmann GmbH
Kisdorfer Weg 28
24568 Kaltenkirchen
Germany

contact@wiska.de
www.wiska.com