

STABILUS

Gas Springs and Dampeners

TCH is an authorized distributor of Stabilus gas springs; we carry the non-blocking line of gas springs LIFT-O-MAT[®], the blocking gas springs BLOC-O-LIFT[®] and the line of dampers, STAB-O-SHOC[®].

Stabilus ensures the highest quality of gas springs and fulfills the requirements of international standards, such as DIN EN ISO 9001 and new world standard ISO/TS 16949.



Benefits and Features

- Provides a more uniform, comfortable adjustment or pivoting movement than mechanical springs.
- Can be used for a variety of applications.
- Customization of gas springs are available if required (minimum quantities may apply).
- Gas springs are maintenance free.

End Fittings

Different applications require different connection types; we have plastic and metal hinge eyes, angle joints and more, the shown selection is only a small amount of the selection available.



Learn More

To learn more about TCH, please contact us toll-free at 1-800-465-6281 to speak to a qualified customer service representative.

Please visit our website for a full listing of TCH products at tchweb.com.

BUFFALO	CALGARY	DALLAS	MONTRÉAL	TORONTO
1370 William Street Buffalo, NY U.S.A. 14206	1135-45th avenue NE Calgary, AB, Canada T2E 2P2	10552 King William Dr. Dallas, TX U.S.A. 75220	16757 Boul. Hymus Kirkland, QC Canada H9H 3L4	40 Emblem Court Toronto, ON Canada M1S 1B1

LIFT-O-MAT®

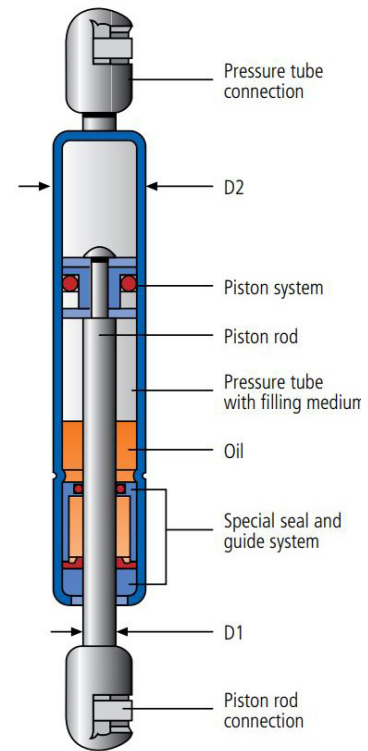
Non-Blocking Gas Springs

For lifting, lowering, moving and adjusting.

LIFT-O-MAT® gas springs offer optimum weight compensation and force support.

Benefits and Features

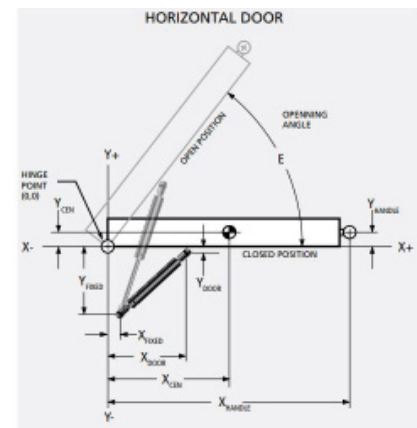
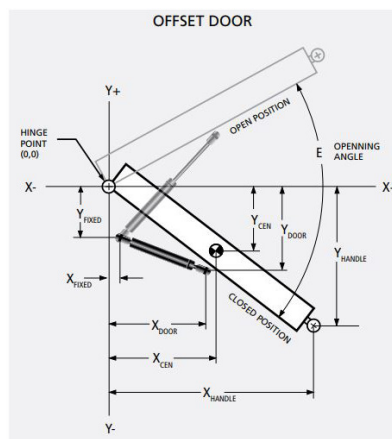
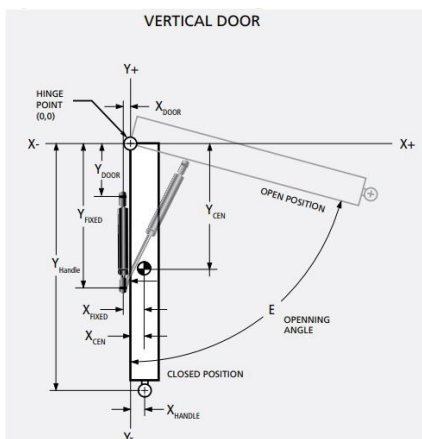
- Includes a wide range of sizes, forces and stroke lengths.
- Utilizes a linear spring curve for uniform force progression, for opening and closing flaps and lids with user friendly movement patterns.
- Offers applications either dynamic or hydraulic damping.
- Has various connection options for practical and swift installation.



Technical Data

Physical Properties	6 x 15 (D1 x D2)	8 x 18	10 x 22
Available Strengths	From 50-400N (11-90 lbs)	From 100-600N (23-135 lbs)	From 150-1150N (34-258 lbs)
Finish	Black Nitrate Stainless Steel	Black Nitrate Stainless Steel	Black Nitrate Stainless Steel
Sizes Available in mm (in) (Stroke length/extended length)	60 (2.36) / 185 (7.68) 80 (3.15) / 235 (9.25) 100 (3.94) / 275 (10.83) 120 (4.72) / 315 (12.40) 150 (5.91) / 375 (14.76)	80 (2.36) / 245 (9.66) 100 (3.94) / 285 (11.22) 120 (4.72) / 325 (12.80) 160 (6.30) / 405 (15.95) 200 (7.87) / 485 (19.09) 250 (9.84) / 585 (23.03)	200 (7.87) / 485 (19.09) 250 (9.84) / 585 (23.03) 300 (11.81) / 685 (26.97) 350 (13.78) / 785 (30.90) 400 (15.75) / 885 (34.84)

Typical Mounting Methods



LIFT-O-MAT®

Blocking Gas Springs

For variable positioning, rigid or spring blocking.

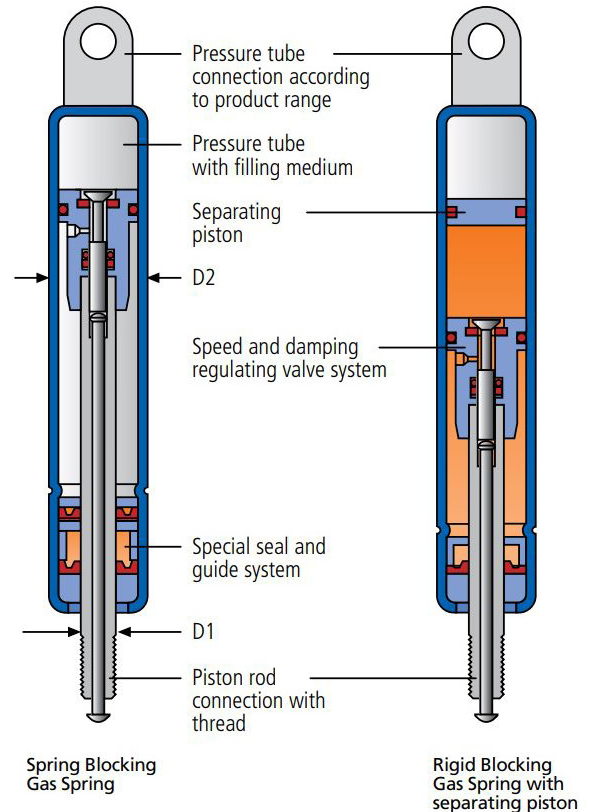
BLOC-O-LIFT® gas springs raise and lower accurately and hold in position when stopped.

Benefits and Features

- Can be blocked in any position by two different methods *rigid in extension* or *rigid in compression*.
- Resilient blocking is ideal for smooth dampening of shocks, impacts or pulse-peak loads.
- May be suitable for continuous release applications, if required.

Technical Data

Physical Properties		
Available Strengths	200-1200N (45-270 lbs)	
Finish	Black Nitrate Stainless Steel	
Sizes Available in mm (in)	60 (2.35) / 228 (8.98)	160 (6.30) / 430 (16.93)
(Stroke length/extended length)	80 (3.15) / 269 (10.59)	200 (7.87) / 509 (20.04)
	100 (3.92) / 310 (12.20)	250(9.84) / 610 (24.02)
	120 (4.72) / 348 (13.70)	



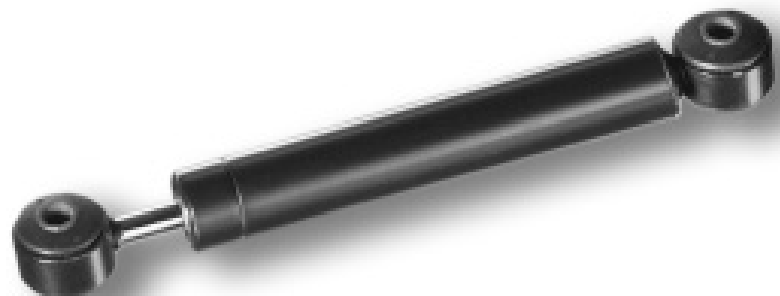
STAB-O-SHOC®

Dampers

Hydraulic dampening of vibrations and motions.

Benefits and Features

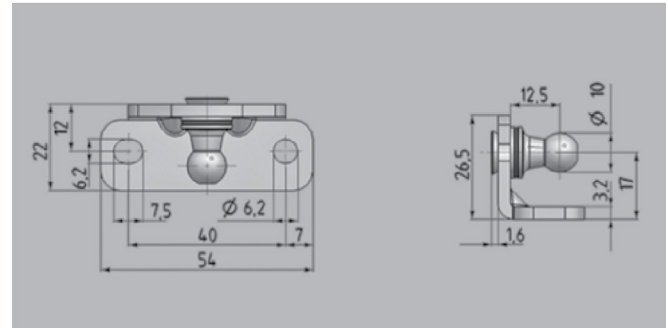
- Designed to match the application.
- Dampens forces in one or both extension and compression direction.
- Variable damping rates.



Mounting Brackets

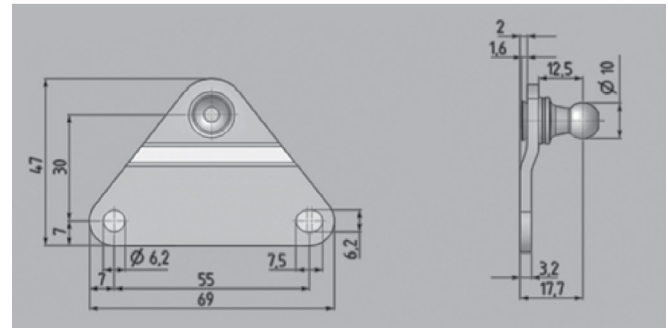
90 Degree Bracket with 10mm Ball Stud

Material	Steel
Finish	Zinc plate
Weight	0.05 lbs
Maximum Allowable Force	1000 N (at 20°C in compression position)



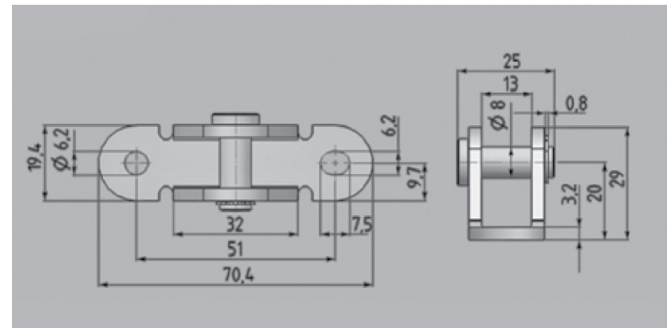
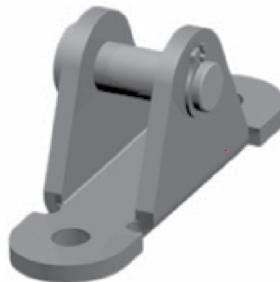
Flat Bracket with 10mm Ball Stud

Material	Steel
Finish	Zinc plate
Weight	0.05 lbs
Maximum Allowable Force	1000 N (at 20°C in compression position)



Mounting Bracket with 8mm Dia. Pin

Material	Steel
Finish	Zinc plate
Weight	0.05 lbs
Maximum Allowable Force	1600 N (at 20°C in compression position)



Learn More

To learn more about TCH, please contact us toll-free at 1-800-465-6281 to speak to a qualified customer service representative. Please visit our website for a full listing of TCH products at tchweb.com.

BUFFALO	CALGARY	DALLAS	MONTRÉAL	TORONTO
1370 William Street Buffalo, NY U.S.A. 14206	1135-45th avenue NE Calgary, AB, Canada T2E 2P2	10552 King William Dr. Dallas, TX U.S.A. 75220	16757 Boul. Hymus Kirkland, QC Canada H9H 3L4	40 Emblem Court Toronto, ON Canada M1S 1B1