

4 Stage Extension Handle

SKU / Product Number

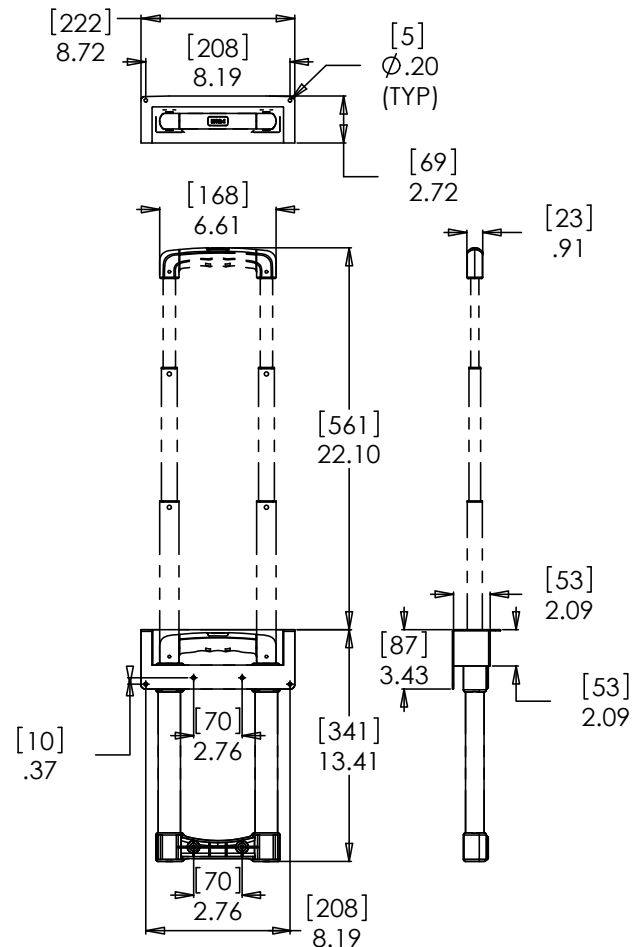
- 500-2316800

Benefits and Features

- Four stage handle is ideal for low profile case applications where space is tight.
- Telescoping handle has 3 positions; fully recessed in the dish, 16-3/4" above the dish and fully extended to 21-5/8" above the dish.
- Release button is located in the handle.
- Weight capacity is approx. 100lbs.
- Zinc plated dish and chrome plated tubing.
- Standard quantity is 10 pieces per box.



Spec Drawing



Learn More

To learn more about TCH please contact us toll-free at 1-800-465-6281 to speak to a qualified customer service representative.

Visit our website for a full listing of all TCH products at: tchweb.com.

BUFFALO	CALGARY	DALLAS	MONTRÉAL	TORONTO
1370 William Street Buffalo, NY U.S.A. 14206	1135-45th avenue NE Calgary, AB, Canada T2E 2P2	10552 King William Dr. Dallas, TX U.S.A. 75220	16757 Boul. Hymus Kirkland, QC Canada H9H 3L4	40 Emblem Court Toronto, ON Canada M1S 1B1