

MANUAL

# TOWER DIFFUSER



LOVE AT FIRST SCENT

## INTRODUCTION

The Scentify Tower Diffuser is a scent machine that is designed with smart technology that transforms your favorite oil into a gentle fragrance mist. This device covers up to 1000 square feet of area and creates a scented environment. Using the Scentify app via Bluetooth, you are able to customize the Tower settings. This device will impress your visitors with the pleasant aroma of your home and office - it is truly LOVE AT FIRST SCENT

---

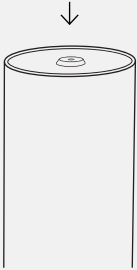
### PACKAGE INCLUDES

- 1 x Scentify Tower Diffuser
- 1 x 100ml Bottle
- 1 x 5 Foot Power Adapter
- 1x Replacement Straw

### TECHNICAL SPECIFICATIONS

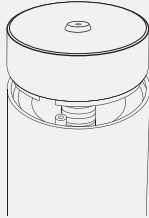
|                    |               |
|--------------------|---------------|
| Brand Name         | Scentify      |
| Product Dimensions | 112*112*288mm |
| Bottle capacity    | 100ml         |
| Weight             | 1.4kg         |
| Coverage           | 1000 Sq       |
| Power              | 5W            |
| Connectivity       | Bluetooth     |

## SETTING UP THE DEVICE



①

Push down the top cover to release diffuser nozzle.



②

Take out the diffuser nozzle.

**NOTE:** You must remove the plastic sticker surrounding the diffuser nozzle.



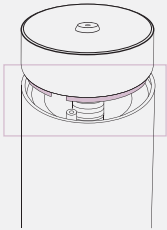
③

Fill your bottle with aroma oil and screw in the bottle to the diffuser nozzle. (Do not pour oil inside the diffuser.)



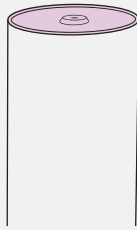
④

Put the diffuser nozzle with bottle back into the diffuser.



⑤

Line up the grooves.



⑥

Push down and make sure the diffuser nozzle is flush with the diffuser. (1/8" beneath the diffuser frame)

## OPERATIONS

Connect the device with the power cord, the tower will make a beep sound.

**NOTE:** Screen light will shut off after 60 seconds. Press + or - to wake.



### POWER ON/OFF

Press the button to turn ON and OFF the device.



### SET INTENSITY SETTING

The machine has 9 intensity levels, press the + button to increase the intensity, press the - button to decrease the intensity. See chart for details.

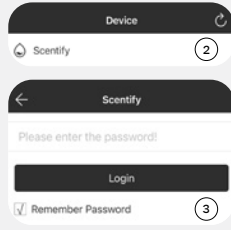
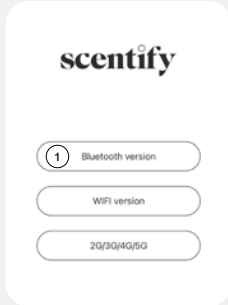


### POWER INDICATOR

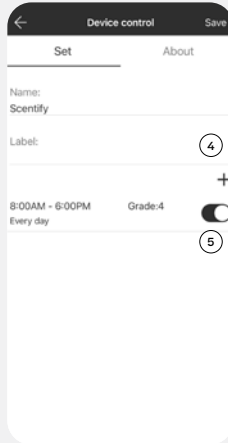
Sign indicates the direction of the power supply.

## **S** CONNECTING TO APP –BLUETOOTH

Open the “Google Play” store or “App Store” on your smartphone, search for the **Scentify** app and download.



1. Open the Scentify app and select Bluetooth. (This device only connects via bluetooth)
2. Select your device.
3. Enter the default password **8888** and press Login.



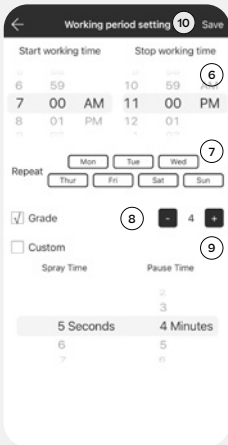
On the Device Control page;

4. You can change your device name and label information of your scent diffuser.

**NOTE:** Press the “Save” button at the top right corner of the screen after each change.

5. Press the schedule you would like to edit.

**NOTE:** You can set up to 5 different schedules by pressing the + button. To delete a schedule, swipe left. Press the toggle button to turn on/off any schedule.



On the “Working period setting” page;

6. Set the hours of the day you want your diffuser to run by scrolling the “Start working time” and “Stop working time”.

7. Select the days of the week you want your diffuser to run (all days are pre-selected).

8. Press + or - to increase or decrease the preset intensity grades (1-9). See chart for details.

9. Check (✓) the Custom box to create a custom intensity and scroll the “Spray Time” and “Pause Time”.

10. Click the “Save” button to update the settings.



11. You can change the default password by pressing on the “About” tab, in the “Device control” page.

## **RESET BLUETOOTH APP PASSWORD**

Press and hold the power button on the diffuser for 3 seconds to reset the password to 8888.

## **RESET TO FACTORY SETTINGS**

Press and hold the + and - on the diffuser until you hear a beep.

## INTENSITY AND OIL CONSUMPTION

| Grade | Spraying Time | Pause Time  | Consume(ml/h) |
|-------|---------------|-------------|---------------|
| G1    | 30 seconds    | 270 seconds | 0.07          |
| G2    | 60s           | 240s        | 0.13          |
| G3    | 90s           | 210s        | 0.20          |
| G4    | 120s          | 180s        | 0.27          |
| G5    | 150s          | 150s        | 0.33          |
| G6    | 180s          | 120s        | 0.40          |
| G7    | 210s          | 90s         | 0.47          |
| G8    | 240s          | 60s         | 0.53          |
| G9    | 270s          | 30s         | 0.60          |

### WARNINGS



Always keep the Tower upright. Tilted or angled will cause oil to overflow and damage the diffuser.

### EQUIPMENT CLEANING

1. Fill the bottle with water-vinegar or rubbing alcohol.
2. Let the diffuser run for about 3-5 minutes.
3. Drain the diffuser bottle completely.
4. Using a cotton swab dipped in vinegar, clean the tight spots and corners of the diffuser to make sure that no spots are left dirty.
5. Use a dry cloth or cotton swabs to wipe the diffuser and dry it thoroughly.

### MAINTENANCE & STORAGE

- Always turn off or unplug the diffuser when not in use. • Do not move the diffuser while in use.
- Remove the power cord before cleaning.
- Store the diffuser in a dry and clean place.

## TROUBLESHOOTING

| Problem              | Solution  |
|----------------------|---|
| No Diffusion         | <ul style="list-style-type: none"><li>- Check if the power is ON or OFF.</li><li>- Check oil level in bottle</li><li>- Check app settings or switch to button settings.</li><li>- Follow cleaning instructions above.</li></ul> |
| Oil Leaking          | <ul style="list-style-type: none"><li>- Check if bottle is screwed in tightly.</li><li>- Replace the supplied straw that came with the machine.</li></ul>   |
| Bubbling Sound       | <ul style="list-style-type: none"><li>- There may be too much oil in the bottle.</li></ul>  |
| No Display on Screen | <ul style="list-style-type: none"><li>- Make sure the power is ON.</li><li>- Screen light shuts off after 60 seconds. Press + or - to wake.</li></ul>   |