

# MYA ULTRA

The Carimali logo consists of a white, stylized 'C' shape that is open on the right side. To the right of this 'C' is the word 'ARIMALI' in a bold, white, sans-serif font. The entire logo is positioned at the bottom center of the image.



# OVERVIEW

# Fast and reliable



Average daily production: 400 cups

## BENEFITS

No waste of time during rush hours

## ADVANTAGES

Affordable high performance

## LOCATIONS

Convenience stores, high volume production self-service

## COLOURS

● Black



## CONVENIENCE STORES



## HIGH VOLUME SELF-SERVICE





HIGHLIGHTS

# Highlights



814 mm

290 mm

**Dimensions:** 290x814x564 mm

**Weight:** 42 kg

**Spout clearance:** 90 - 195 mm

**# of bean hoppers:** 1

**Bean hopper capacity:** 1,3 kg

**Coffee boiler capacity:** heat exchanger

**Steam boiler capacity:** 4 l

**Brewing Unit:** 2 different versions

Mbrew L – 8 ÷ 16 g

Mbrew XL – 10 ÷ 20 g



# Highlights

814 mm



290 mm

**User interface:** 10" touch screen

**Milk system:** Pump

**Water connection:** Mains

**Voltage:** 220-240 V 50/60 Hz

**Watts:** 3750 W

**Communication protocol:** MDB

**Accessories:** Fridges and cup warmer



# Accessories



## Fridge:

Fridge Ultra

Fridge Plus



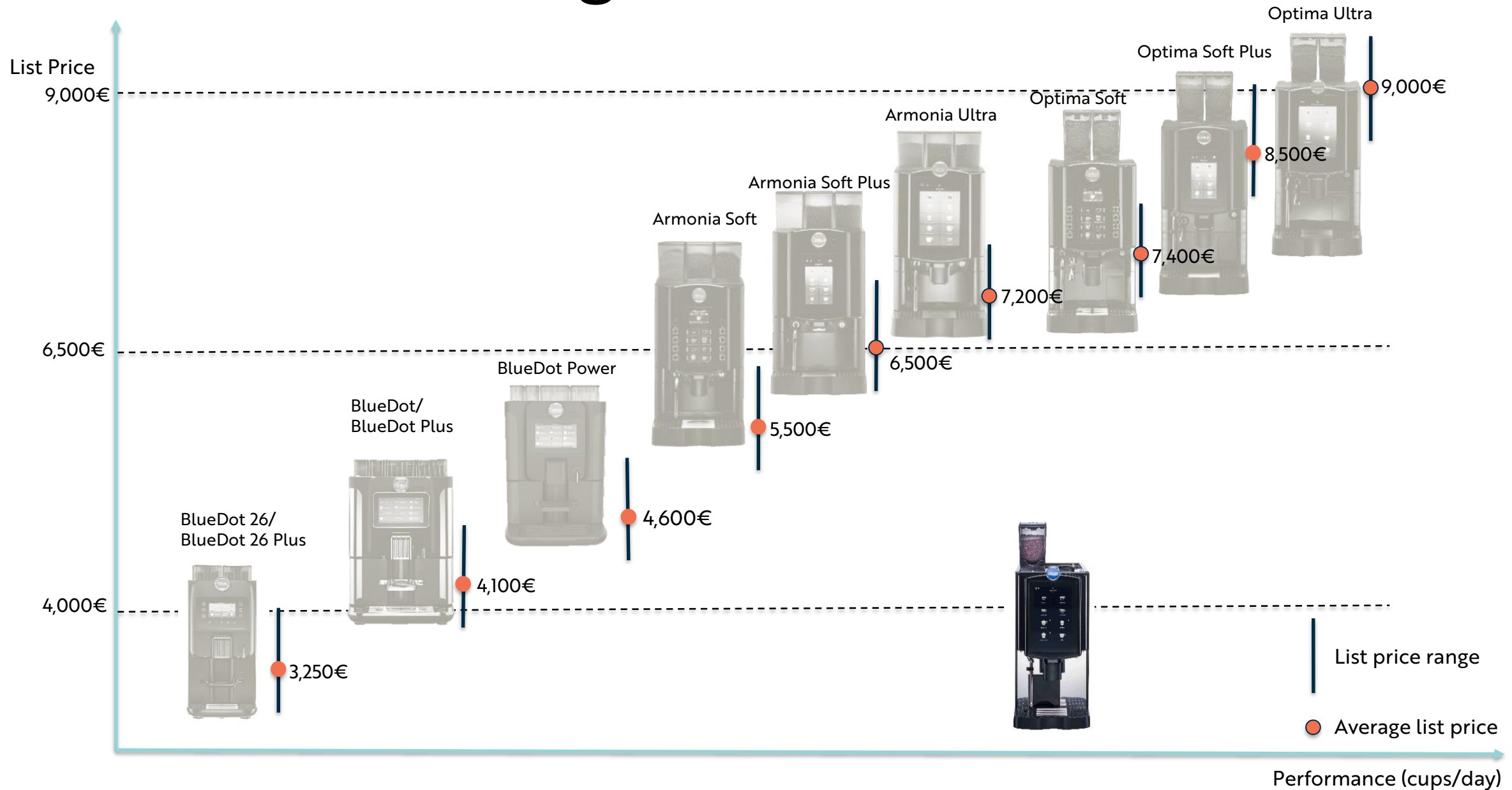
## Cup warmer:

Cup warmer Plus





# Price Positioning





MAIN VERSIONS

# Main versions

## ES + FM

Coffee made with an Espresso Brewer + fresh milk management with automatic cappuccinatore or steam wand





TECHNOLOGIES

## CARicare



### Benefits

Business Intelligence portal to reduce Total Cost of Ownership

### Features

Collecting data, Diagnostic, Editing

## Brewing unit



### Reliable

2 different brewing chambers:

Mbrew L 8 ÷ 16 g

Mbrew XL 10 ÷ 20 g



## Boiler



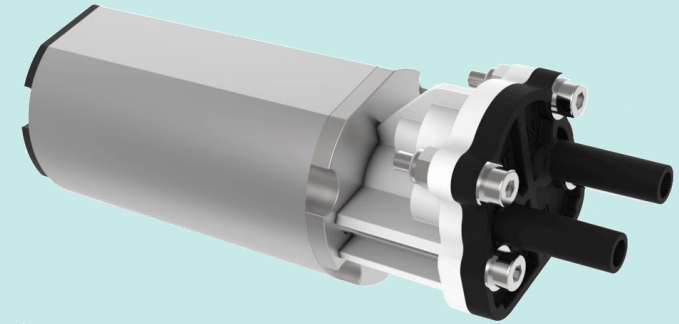
### Benefits

High productivity without any recovery time

### Features

4 l boiler + 1 embedded heat exchanger

## Milk pump



High constancy doses

Gear pump 1500 rpm



[carimali.com](https://carimali.com)

