

## DESIGNED FOR FUNCTIONALITY

Every single machine that goes out from the factory is carefully tested in order to ensure long term functionality. The grinders are designed for easy functioning and maintenance, making them every roasters or coffee shops best friend.

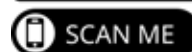
DIP products do not claim, but prove their devotion to perfect grinding. All DIP grinders, have been oriented to work simply and efficiently without compromising the grinding quality.

From the very foundation of the company, DIP insisted on producing every core component of the machines inside the factory. To support this principle, all tools and moulds are designed and produced by DIP, being designed with respect to the principles of proper engineering.

### DIPACCI COFFEE COMPANY

AUSTRALIAN DISTRIBUTOR  
FOR DIP GRINDERS

Dipacci Coffee Company is the official Australian distributor for Dip Grinders. Dip grinders are manufactured and produced in Romania and Dip is the largest manufacturer of coffee grinders in Europe and the Middle East. We currently have the entire Dip Grinders range in stock and available for retail and wholesale purchase.



DKS-65



DS-68



DK-30



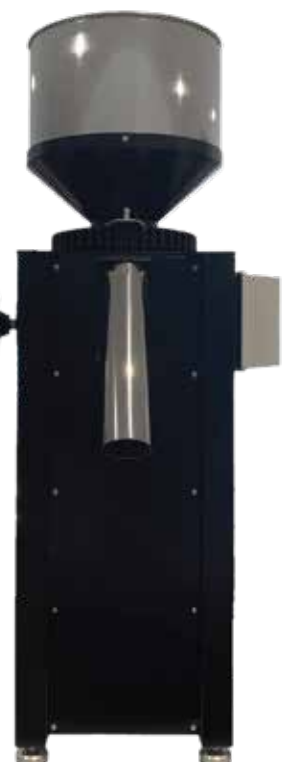
DK-30F



DK-40



DK-50



DK-200



# DKS-65

## ESPRESSO GRINDER



DKS 65

The DKS-65 On Demand grinder is an innovative machine. With devotion to the needs of coffee shops, hotels and baristas, the DKS-65 delivers each coffee portion, freshly ground on demand.

- Constant and cool grinding which assures crema and coffee aroma
- Fresh on demand coffee grinding for every dose delivered
- No coffee decay due to pre-grindi
- Precise dosing level by electronic control, to assure constant shots
- Single and double dose selector, individually adjustable
- Simple and precise grinding adjustment
- Daily Track counter for both single and double doses grounded
- Easy slide stop lid & 2-Step cleaning 4-Step maintaining system

Voltage / Frequency

220-230V/50Hz

Motor Power

650W

Burr Diameter

64mm Flat Burrs

Grinding Capacity

3.2g per second

Dimensions

160x300x57mm

Net Weight

9 kilos



**SYDNEY HEAD OFFICE**

+61 401 057 442

SALES@DIPACCI.COM.AU

**PERTH**

**MELBOURNE**

**QUEENSLAND**

**PORT MACQUARIE**



ALL NEW!

# DS-68

## ESPRESSO GRINDER



The DS-68 On Demand grinder is an innovative machine. With devotion to the needs of home baristas, coffee shops, and hotels, the DS-68 delivers each coffee portion, freshly ground on demand.

- Cooling fans on the back of the grinder which assures crema and coffee aroma
- Fresh on demand coffee grinding for every dose delivered
- No coffee decay due to pre-grinding
- Precise dosing level by electronic control, to assure constant shots
- Single and double dose selector, individually adjustable
- Simple and precise grinding adjustment
- Daily Track counter for both single and double doses grounded
- Easy slide stop lid & 2-Step cleaning 4-Step maintaining system

Voltage / Frequency

220-230V/50Hz

Motor Power

650W

Burr Diameter

68mm Flat Burrs

Grinding Capacity

3.2g per second

Dimensions

160x300x57mm

Net Weight

10 kilos



SYDNEY HEAD OFFICE

+61 401 057 442

SALES@DIPACCI.COM.AU

PERTH  
MELBOURNE  
QUEENSLAND  
PORT MACQUARIE



# DK-30

## DELI GRINDER

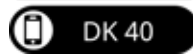
- Grinding Capacity: 500g / minute
- Motor Power: 750W
- Hopper Capacity: 500g
- Burr Size: 80mm Flat
- Dimensions: 210x250x480
- Voltage: 220-230V / 50Hz. 380-400V / 50Hz
- Net weight: 21KG



# DK-40

## DELI GRINDER

- Grinding Capacity: 1kg / minute
- Motor Power: 1,100W
- Hopper Capacity: 1kg
- Burr Size: 100mm Flat
- Dimensions: 230x270x610
- Voltage: 220-230V / 50Hz. 380-400V / 50Hz
- Net weight: 24KG



SYDNEY HEAD OFFICE

+61 401 057 442

SALES@DIPACCI.COM.AU

PERTH  
MELBOURNE  
QUEENSLAND  
PORT MACQUARIE



# DK-50

## DELI GRINDER



DK 50

- Grinding Capacity: 1.4kg / minute
- Motor Power: 1,500W
- Hopper Capacity: 1.3kg
- Burr Size: 120mm Flat
- Dimensions: 250x280x630
- Voltage: 220-230V / 50Hz. 380-400V / 50Hz
- Net weight: 35KG



# DK-200

## DELI GRINDER



DK 200

- Grinding Capacity: 5kg / minute
- Motor Power: 4KW
- Hopper Capacity: 15kg
- Burr Size: 180mm Flat
- Dimensions: 450x450x1500
- Voltage: 220-230V / 50Hz. 380-400V / 50Hz
- Net weight: 120KG





DIP GRINDERS  
**RETAIL PRICELIST**

**2023**

ALL PRICES ARE IN AUD Ex GST

**ESPRESSO GRINDERS**

DKS-65 ————— RRP \$1,395.00

DS-68 ————— RRP \$1,590.00

**DELI GRINDERS**

DK-30 ————— RRP \$2,500.00

DK-30F ————— RRP \$2,600.00

DK-40 ————— RRP \$3,500.00

DK-50 ————— RRP \$4,500.00

DK-200 ————— RRP \$15,000.00

**REPLACEMENT BURRS**

DKS-65 ————— RRP \$120.00

DS-68 ————— RRP \$150.00

DK-30 ————— RRP \$350.00

DK-40 ————— RRP \$450.00

DK-50 ————— RRP \$600.00

DK-200 ————— RRP \$1,200.00

**WHOLESALE PRICING AVAILABLE**

Simply call or email inquiry to the details below.

**SYDNEY HEAD OFFICE**

☎ +61 401 057 442

✉ SALES@DIPACCI.COM.AU

**PERTH**

**MELBOURNE**

**QUEENSLAND**

**PORT MACQUARIE**



[WWW.DIPACCI.COM.AU](http://WWW.DIPACCI.COM.AU)

**SYDNEY HEAD OFFICE**

 **+61 401 057 442**

 **SALES@DIPACCI.COM.AU**

**PERTH  
MELBOURNE  
QUEENSLAND  
PORT MACQUARIE**



# DK-30F

## FILTER GRINDER

---

- Grinding Capacity: 500g / minute
- Motor Power: 750W
- Hopper Capacity: 500kg
- Burr Size: 80mm Flat
- Dimensions: 210x250x480
- Voltage: 220-230V / 50 Hz
- Net weight: 21KG

