

# NORDIC PU CUSHIONED OFFICE CHAIR

## *DIMENSION*

H82 X D44 X W42 CM

## *MATERIALS*

Dining Chair Surface: PU Cushion

Dining Chair body: Polypropylene

Dining Chair Legs: Solid Wood legs



CHA-JSJ-001-BK



CHA-JSJ-001-WT



CHA-JSJ-001-GY





## ***DIMENSION***

H82 X D49 X W35 CM

## ***MATERIALS***

Dining Chair body: Polypropylene

# **PLAST NORDIC DINING CHAIRS**



CHA-ZOK-001-BL



CHA-ZOK-001-YW



CHA-ZOK-001-BK



CHA-ZOK-001-WT



CHA-ZOK-001-GY



CHA-ZOK-001-PK





# NUDEO NORDIC DINING CHAIRS



## ***DIMENSION***

H77 X D48 X W46 CM

## ***MATERIALS***

Dining Chair body: Polypropylene



CHA-DCJ-001-BK



CHA-DCJ-001-WT



CHA-DCJ-001-YW



CHA-MDX-001-GN



CHA-MDX-001-GY



CHA-MDX-001-BL



CHA-MDX-001-RD



CHA-MDX-001-BK



CHA-MDX-001-CL



CHA-MDX-001-WT

## NUDEO DESIGNER DINING CHAIR

with Comfort Arm  
Rest & Back Rest

### ***DIMENSION***

H77 X D48 X W46 CM

### ***MATERIALS***

Dining Chair body: Polypropylene



STACKABLE





CHA-DCJ-002-GY



CHA-DCJ-002-BK



CHA-DCJ-002-YW



CHA-DCJ-002-WT

## KUTA Nordic Dining Chairs

### ***DIMENSION***

H76 X D46 X W41.5 CM

### ***MATERIALS***

Dining Chair body: Polypropylene  
Dining Chair Legs: Wood legs



CHA-STK-BK



CHA-STK-GN



CHA-STK-GY

## SITI Chair

### ***DIMENSION***

H86 X D45 X W52 CM

### ***MATERIALS***

Chair Surface: Tear Resistant Mesh

Chair body: Flexible Nylon

Chair Legs: Steel Frame







CHA-DXY-WT



CHA-DXY-OG



CHA-DXY-GN



CHA-DXY-PK



CHA-DXY-BK



CHA-DXY-CL



CHA-DXY-DG

## DICAN Chair

### ***DIMENSION***

H77X D48 X W42 CM

### ***MATERIALS***

Dining Chair body: Polypropylene





## JAVA Chair

### ***DIMENSION***

H84 X D43 X W40 CM

### ***MATERIALS***

Dining Chair body: Polypropylene



CHA-JYP-WT



CHA-JYP-PK



CHA-JYP-GN



CHA-JYP-GY



CHA-JYP-BL





CHA-KBY-WT



CHA-KBY-GN



CHA-KBY-GY



CHA-KBY-YW



CHA-KBY-RD

## KIBY Chair

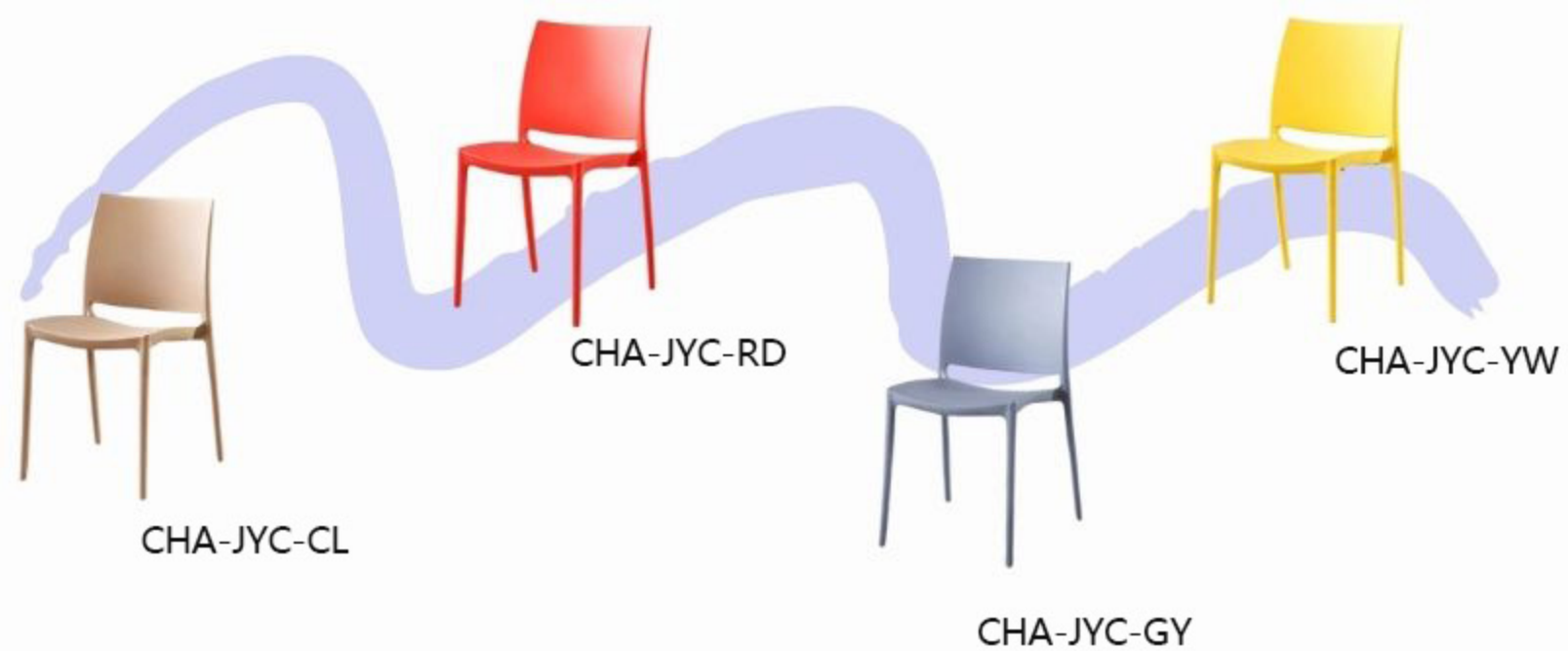
### ***DIMENSION***

H88 X D49 X W44 CM

### ***MATERIALS***

Dining Chair body: Polypropylene





## JC Chair

### ***DIMENSION***

H81 X D50 X W43 CM

### ***MATERIALS***

Dining Chair body: Polypropylene





# MICO Chair



CHA-MKL-PK



## ***DIMENSION***

H79 X D40 X W40 CM

## ***MATERIALS***

Dining Chair body: Polypropylene

CHA-MKL-WT

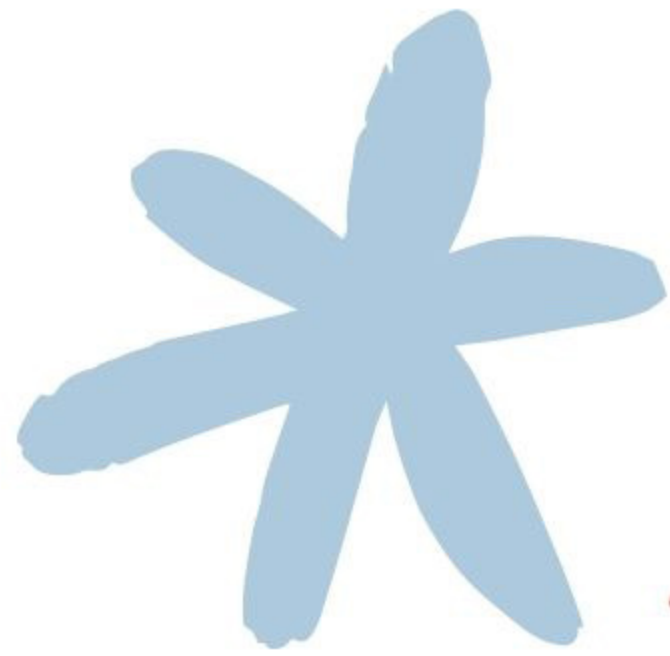


CHA-MKL-LG



CHA-MKL-YW





# SMIGO Chair



CHA-SMJ-DB



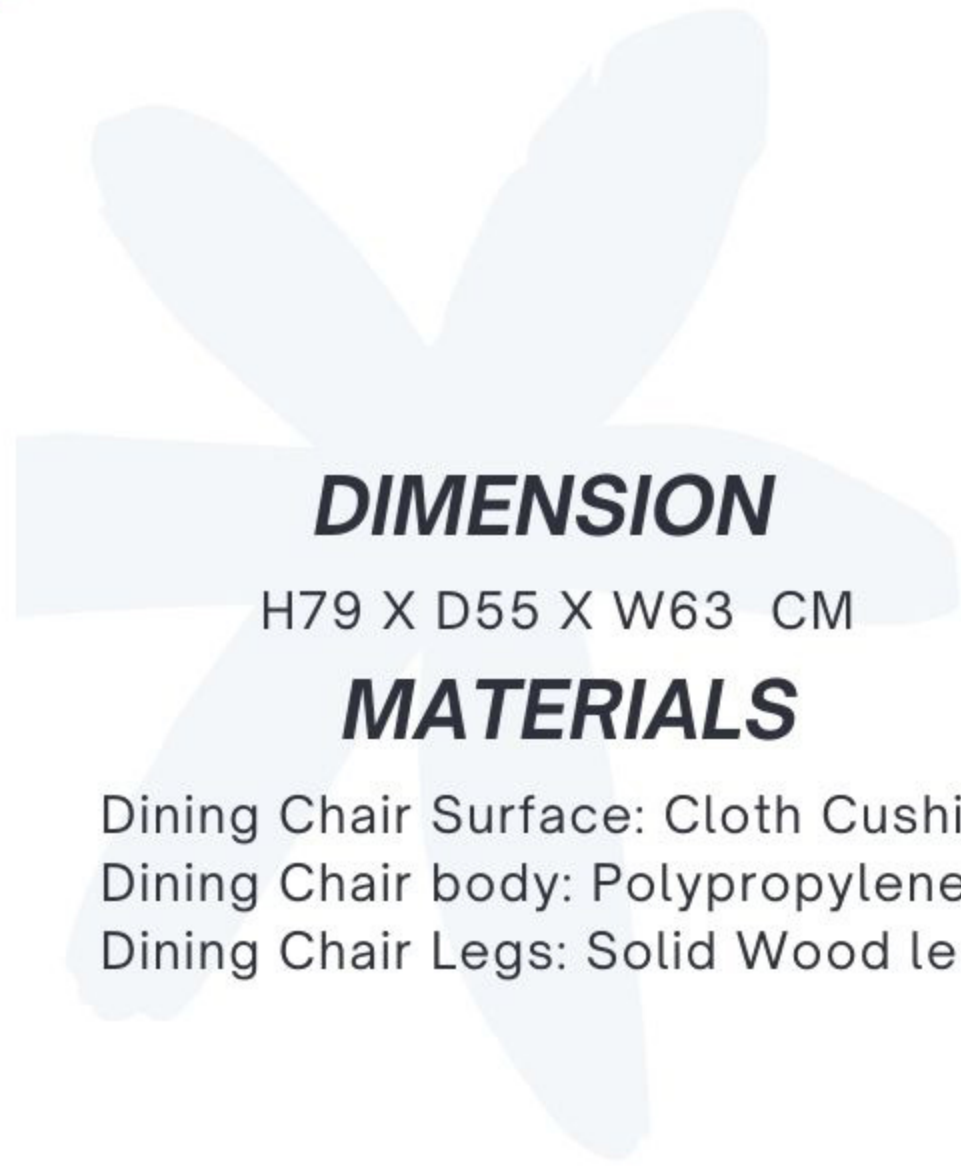
CHA-SMJ-WT



CHA-SMJ-GY



CHA-SMJ-RD



## ***DIMENSION***

H79 X D55 X W63 CM

## ***MATERIALS***

Dining Chair Surface: Cloth Cushion

Dining Chair body: Polypropylene

Dining Chair Legs: Solid Wood legs





# FIBE Chair

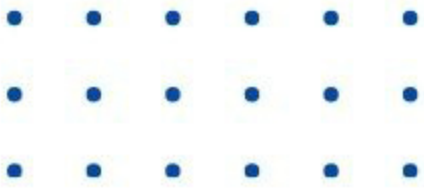
## ***DIMENSION***

H82.5 X D58 X W58 CM

## ***MATERIALS***

Dining Chair Surface: Cloth Cushion  
Dining Chair body: Polypropylene  
Dining Chair Legs: Carbon steel legs





# MELI Chair

## ***DIMENSION***

H80 X D50 X W46 CM

## ***MATERIALS***

Dining Chair body: Polypropylene  
Dining Chair Legs: Electroplated metal



CHA-MEL-WT



CHA-MEL-KK



CHA-MEL-BK



CHA-MEL-GY



# BOLOSOM Chair



CHA-BOS-WT



CHA-BOS-PK



CHA-BOS-GY



CHA-BOS-BK



CHA-BOS-GN



CHA-BOS-OG



CHA-BOS-YW

## ***DIMENSION***

H80 X D52 X W47 CM

## ***MATERIALS***

Dining Chair body: Polypropylene



# Petti Chair



CHA-PPE-BK



CHA-PPE-GN



CHA-PPE-PK



CHA-PPE-WT

## ***DIMENSION***

H80 X D52 X W47 CM

## ***MATERIALS***

Dining Chair body: Polypropylene





# RTI Chair

## ***DIMENSION***

H81 X D43 X W43 CM

## ***MATERIALS***

Chair body: Polypropylene

CHA-RTG-BK



CHA-RTG-WT



# SIMPLY Bar Chair

## *DIMENSION*

H85 X D49 X W48 CM

## *MATERIALS*

Dining Chair body: Carbon steel



CHA-BAR-GY



CHA-BAR-GN



CHA-BAR-RD



CHA-BAR-YW





# Sisly Chair



CHA-QSS-GY



CHA-QSS-PK



CHA-QSS-YW



CHA-QSS-BK



CHA-QSS-RD



CHA-QSS-WT

## ***DIMENSION***

H80 X D47 X W42 CM

## ***MATERIALS***

Dining Chair body: Polypropylene  
Dining Chair Surface: Flannel

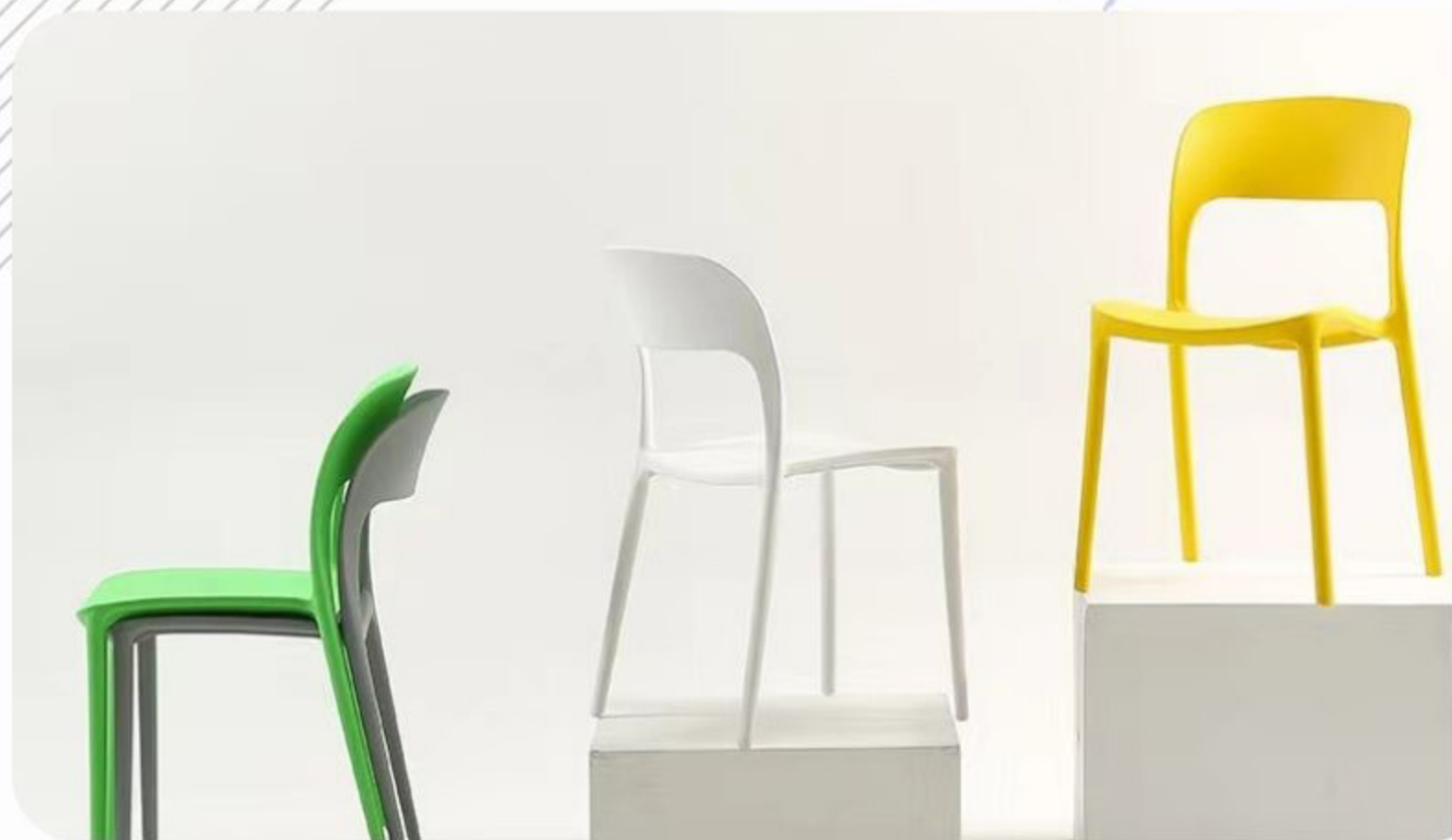
# Tiza Chair

## ***DIMENSION***

H84 X D48 X W47 CM

## ***MATERIALS***

Dining Chair body: Polypropylene



CHA-QTZ-BK



CHA-QTZ-GY



CHA-QTZ-YW



CHA-QTZ-RD



CHA-QTZ-WT