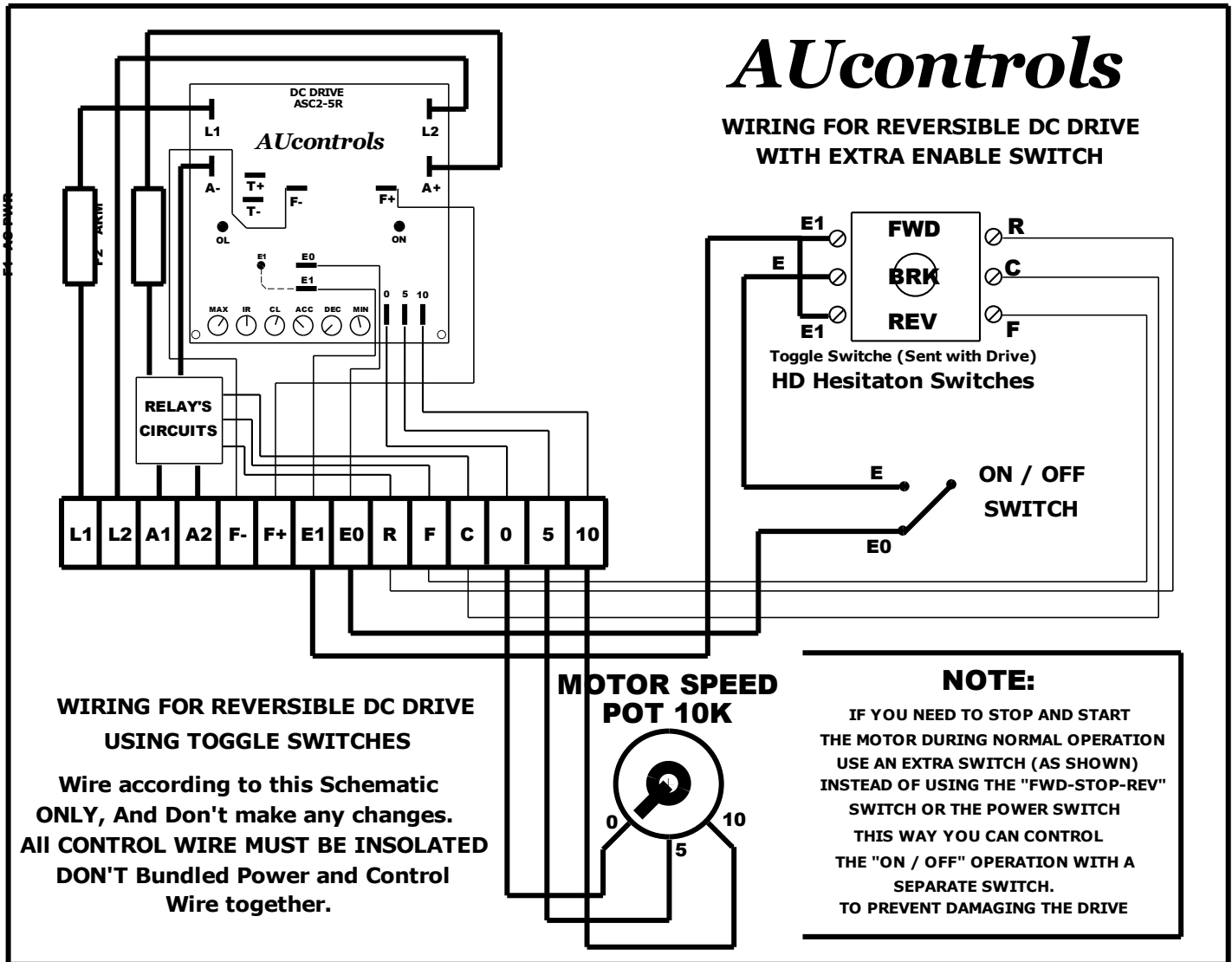


AUcontrols

WIRING FOR REVERSIBLE DC DRIVE WITH EXTRA ENABLE SWITCH



The Schematic shows the wiring to use an EXTRA switch to control STOP/START operation, NOT USING the "FWD-STOP-REV" switch provided with the Drive, this way you can leave the switch on FORWARD or REVERSE Position and just use the ENABLE SWITCH to STOP or to START the Motor.

The EXTRA ENABLE Switch MUST CLOSE to allow the Motor to RUN, In the OPEN position STOPS the Motor.

IF you leave the Hesitation Switch in the Center position (STOP) the Motor will NOT run, it does not matter the position of the EXTRA "ON/OFF" switch. To operate the Motor ALWAYS leave the EXTRA ENABLE SWITCH (OPEN) OFF, and Turn the HESITATION SWITCH to the desire direction of Rotation, then turn the EXTRA SWITCH "ON" to start the Motor, to Stop the Motor also USE the EXTRA ENABLE switch to STOP it, and then you can change direction. This way you will protect the Drive and Motor from damages.

If you have any questions contact us at: info@aucontrols.com

AUcontrols