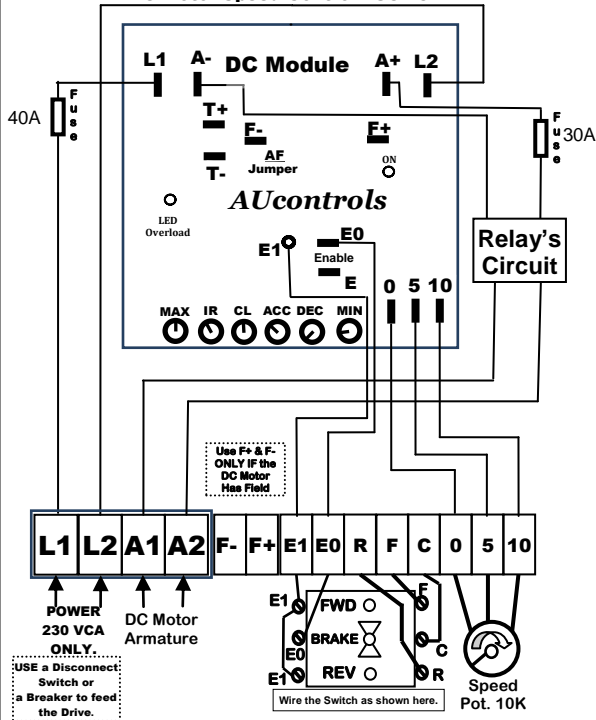


## DC Motor Speed Control ASC2-5R



## Reversible DC Motor Speed Control 5 HP –Open. –Wiring–.

The DC Motor Speed Controllers **ASC2-5R** are **REVERSIBLE** which allows the motor to run Forward or Reverse.

When you need to reverse the DC Motor move the switch's toggle to the center (BRAKE) and allow the motor to come to STOP before moving the switch's toggle to reverse the DC Motor. **Use ONLY the switch we provided!**

The Drive has an internal **BRAKE RESISTOR** to Stop the DC Motor when you move the Switch to the center. Even though it could take few seconds for the Motor to STOP IF the load is big or if it has a Flywheel to keep inertia like in some old printing machines.

For that reason it is good to allow the DC Motor to STOP before moving the switch toggle to change the rotation to prevent damage to the Drive or the DC Motor.

**Wire the Drive according to the schematic.**  
**Make sure ALL wires are in good condition** BEFORE applying power to the Drive and Motor, **bad or grounded wires will damage your Drive.**

**Under NO circumstance should power and signal wires be bundled together.**