

TRAN-E-CSB-D

Technical Datasheet for Bluetooth DALI Controller



Description

The TRAN-E-CSB-D is a system protocol translator with Casambi integration, converting the bluetooth commands to a DALI output.

Capable of broadcasting DALI to a maximum of 8 devices, or individually addressing up to 4 DALI devices.

- DALI Broadcast Mode
- Casambi Enabled
- Addressable DALI Mode
- 1 Channel BLE/DALI Dimming Controller
- Bluetooth Beacons



Technical Specifications

Mechanical

Housing	Black Plastic Injection Moulded ABS
Dimensions	103mm x 35mm x 28mm
Weight	52g
Protection	IP20
Mounting	Screwdown

Input

Voltage Range	120-277VAC
Frequency	50-60Hz
Max Mains Current	20mA
No-load Standby Power	<500mW (No loads on DALI bus)

DALI Output

Voltage Range	16VDC @ 16mA Max
Max. drivers	8

Radio Transceiver

Operating Frequencies	2.4Ghz - 2.483Ghz
Maximum Output Power	+4dBm
Wireless Protocol	Bluetooth Low Energy v4.1

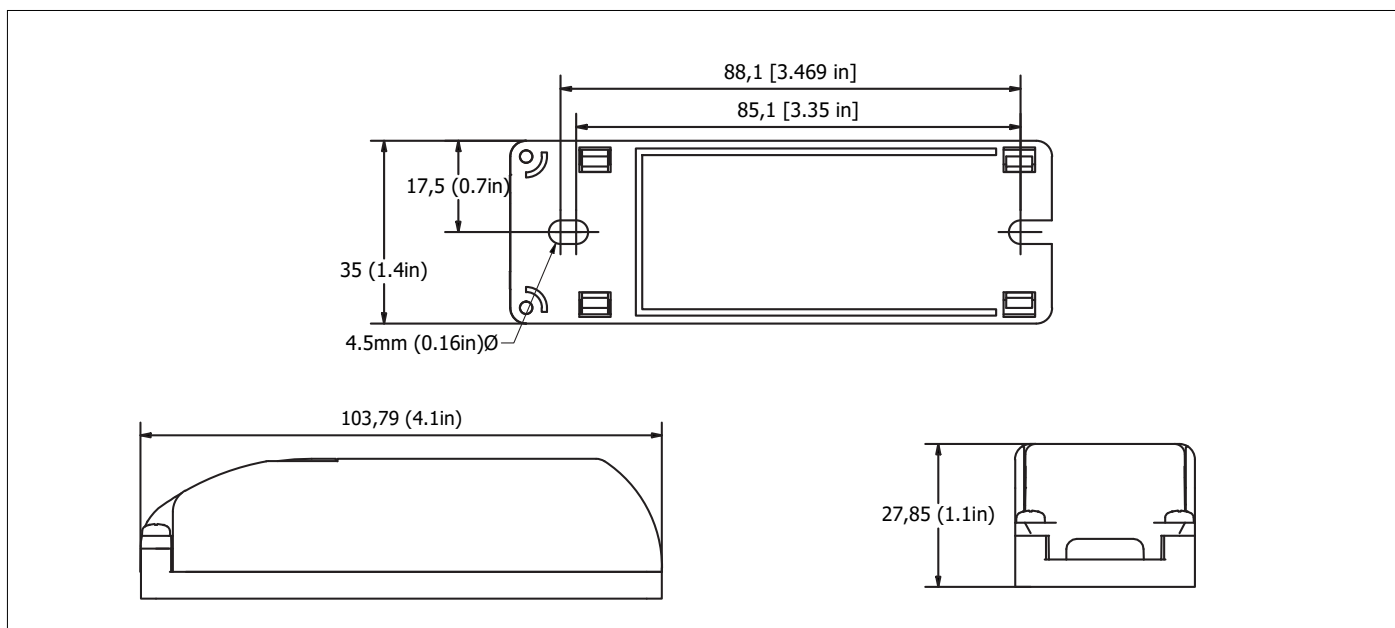
Operating Conditions

Ambient Temperature	0°C to +50°C
Max. Case Temperature	+75°C
Storage Temperature	-40°C to +80°C
Max. Relative Humidity	80% non-condensing

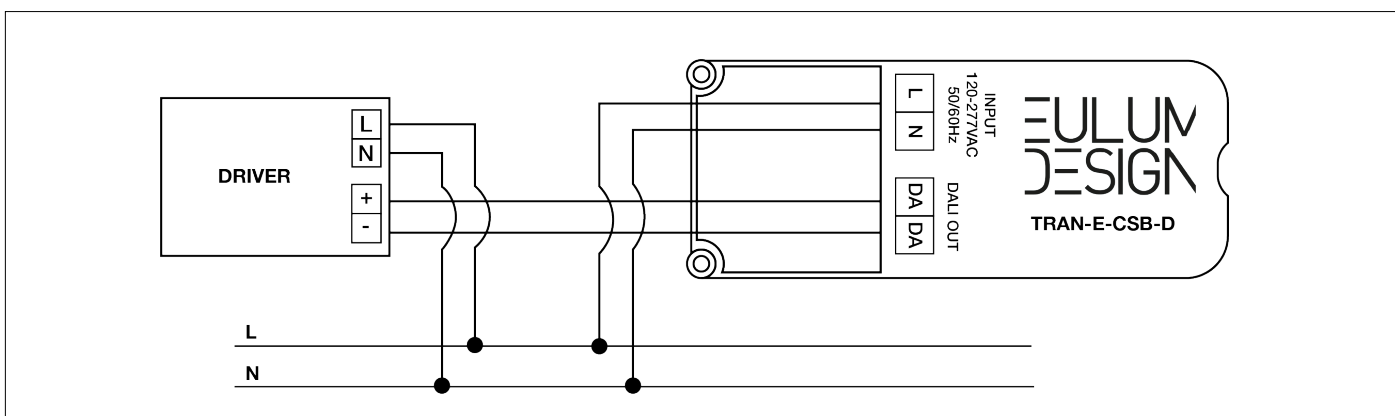
Connectors

Wire Range	0.2mm - 1.5mm
Wire Strip Length	5mm

Dimensions



Wiring Diagram



Range

In open air, the bluetooth range can reach up to 75m. This will be reduced when placed inside a building. Please note that putting the bluetooth unit inside a metal enclosure is unadvised as this will dramatically reduce the signal range.

Compatible Devices:

iPhone iOS and later are supported
 iPad iOS 10 and later are supported
 Android 4.4 version (KitKat) and later are supported.



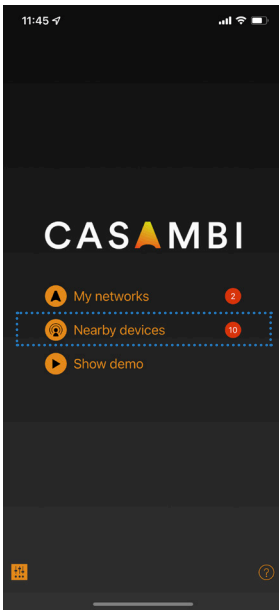
Warranty

For information on our warranty, please visit: www.eulum.com/warranty/

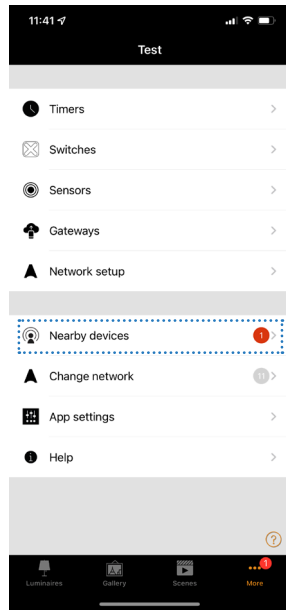
Profiles

Profile Name	Description
TRAN-E-CBDA-1	Broadcase, single colour
TRAN-E-CBDA-4	4 address-auto, independent channels
TRAN-E-CBDA-RGB	3 address-auto, RGB
TRAN-E-CBDA-RGBW	3 address-auto, RGB
TRAN-E-CBDA-TW	2 address-auto, tunable
Version	Classic/Evolution

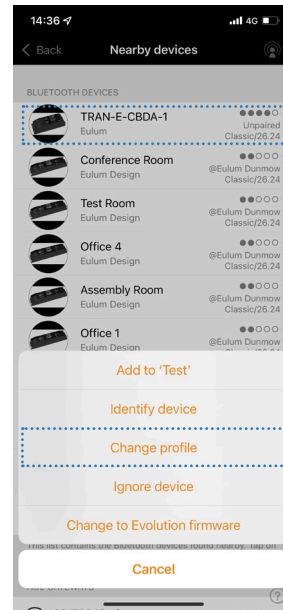
Calibration



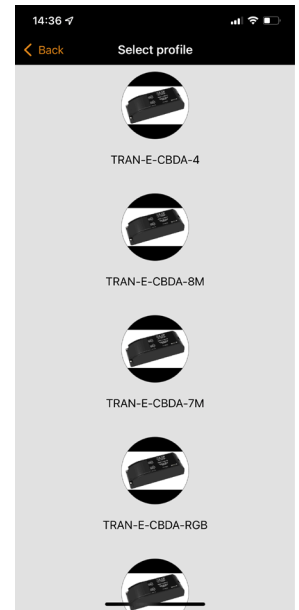
1. Power on the device and open the Casambi App, select “Nearby devices”.



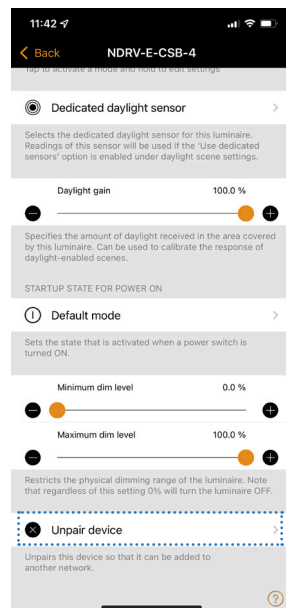
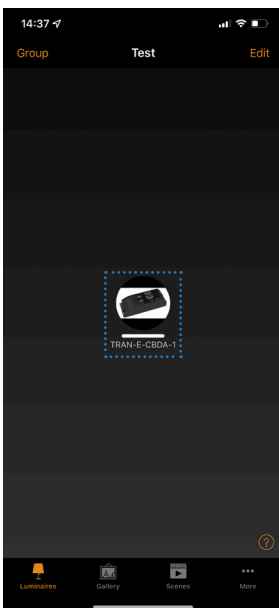
2. Tap “Nearby Devices”



2. Tap the TRAN-D and then “Change profile”.



4. Choose your desired profile. TRAN-E-CBDA-1 is the standard profile and will not show.



NOTE: The TRAN-D must be unpaired to change the profile. To unpair, double tap the TRAN-E-CBDA-1 in the network and scroll to the bottom of the options to “Unpair Device”, then follow step on from Step 1 above.