



FEATURES

- CONVERTER+CASAMBI+BUS
- DC Input: 12-24-48 Vdc
- Command: APP CASAMBI
- Local Command Programmable from APP CASAMBI:
 - Normally Open push button
- DGD Casambi is converter from Casambi signal to DALI or DMX protocol
- Possibility to control devices with protocol DALI or DMX by CASAMBI APP
- Extended temperature range
- 100% Functional test – 5 Years warranty

➤ **PRODUCT CODE**

CODE	Input Voltage	Channel	Input Command	Output Command	Type of Command	
DGD-CBM-DALI(*)	12-48V DC	1	APP CASAMBI	DALI	N° 1 N.O. Push Button	CONVERTER
DGD-CBM-DMX	12-48V DC	1	APP CASAMBI	DMX	N° 1 N.O. Push Button	CONVERTER

(*)Bus DALI power supply is required.

The management of address (DALI variant) or of channels (DMX variant) depends on the module Casambi configuration.
 This item is made by default with fixture "DGD W"

➤ **PROTECTIONS**

OVP	Over voltage protection (**)	✓
UVP	Under voltage protection (**)	✓
RVP	Reverse polarity protection (**)	✓
IFP	Input fuse protection (**)	✓

(**) Only control logic protection.

➤ **TYPE OF PROFILES SELECTABLE FROM CASAMBI APP**

Profile	Output Addresses / channels	Commands	
DGD W	4	APP CASAMBI – 1 pulsante N.A.	DIMMER
DGD TW	2	APP CASAMBI – 1 pulsante N.A.	TUNABLE WHITE
DGD RGB	3	APP CASAMBI – 1 pulsante N.A.	RGB
DGD RGBW	4	APP CASAMBI – 1 pulsante N.A.	RGB W
DGD MRGB+S	5	APP CASAMBI – 1 pulsante N.A.	Master RGB Strobo
DGD MRGBW+S	6	APP CASAMBI – 1 pulsante N.A.	Master RGB W Strobo
DGD Moving MRGBWS ¹⁾	8	APP CASAMBI – 1 pulsante N.A.	Moving Head DMX

¹⁾ This profile is implemented and managed only for DGD-CBM-DMX



DALCNET S.r.l.
 Registered office: via Meucci, 35 - 36040 Brendola (VI) - Italy
 Headquarters: via Meucci, 35 - 36040 Brendola (VI) - Italy
 Tel. + 39 0444 1836680/1867452 Fax. + 39 0444 1867453
 VAT: IT-04023100235
 info@dalcnet.com www.dalcnet.com

DGD CASAMBI



Rev. 2018-06-29
 pag. 2/10

Device Manual

FW 1.0

> **REFERENCE STANDARDS**

EN 61347-1	Lamp controlgear - Part 1: General and safety requirements
EN 55015	Limits and methods of measurement of radio disturbance characteristics of electrical lighting and similar equipment
EN 61547	Equipment for general lighting purposes - EMC immunity requirements

> **TECHNICAL SPECIFICATION**

		Constant Voltage					
Supply Voltage		min: 10,8 Vdc .. max: 52,8 Vdc					
Nominal Power ¹⁾		DALI Variant		DMX Variant			
		Min	Max	Min	Typ	Max	
		@12V	61 mW	115 mW	122 mW	174 mW	261 mW
		@24V	120 mW	176 mW	182 mW	236 mW	325 mW
@48V	230 mW	296 mW	302 mW	365 mW	464 mW		
Power loss in stand by mode		<500mW					
Storage Temperature		min: -40 max: +60 °C					
Ambient Temperature ¹⁾		min: -25 max: +60 °C					
Protection grade		IP10					
Wiring		2.5mm ² solid – 2.5mm ² stranded - 30/12 AWG					
Wire preparation length		5,5 ÷ 6.5 mm					
Mechanical dimensions		92 x 36 x 62 mm DIN RAIL 2M					
Package dimensions		124 x 71 x 48 mm					
Casing material		Plastic					
Weight		88g					

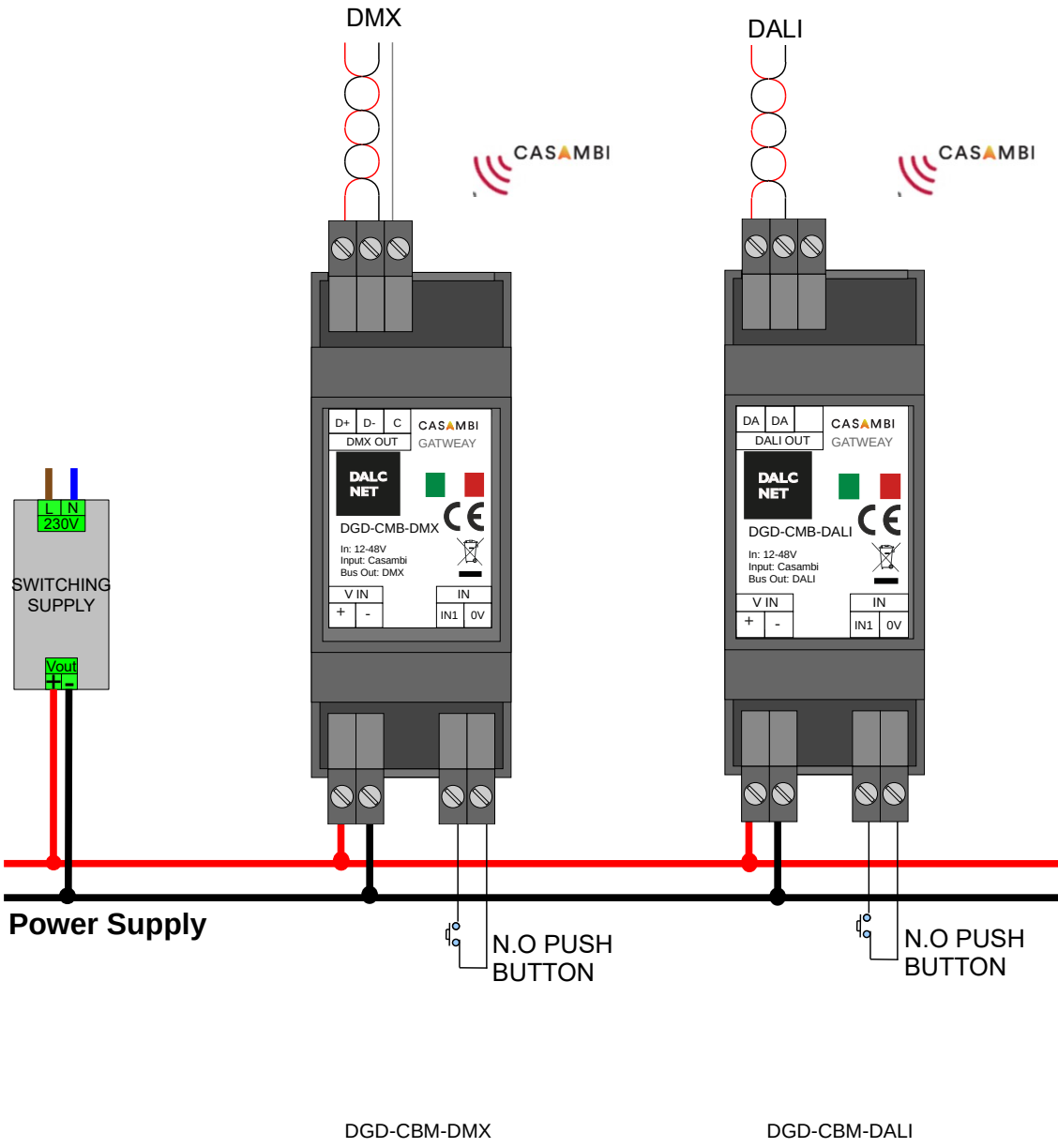
¹⁾ maximum value, dependent on the ventilation conditions.



INSTALLATION

Follow the drawing below to set the product:

- 1) Connect the BUS in "DALI OUT or DMX OUT" terminal blocks of the device (depending on the DGD variant).
- 2) Optional: connect the local command (N.O. Push Button) to the device terminal blocks "IN".
- 3) Connect the power supply (12-48Vdc) to the device terminal blocks "DC IN".



➤ **PUSH DIMMER FEATURE**

Casambi App allows to program the local command with some preset functions.

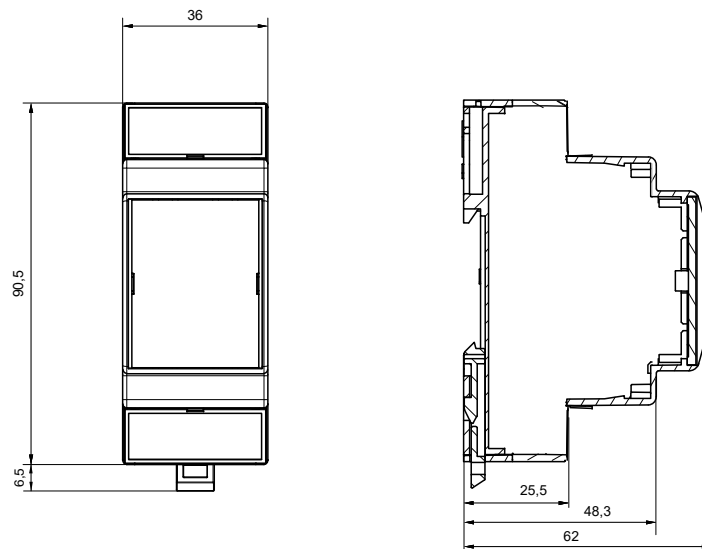
Button	Function (*)		
1	Controls a luminaire	Click Long pressure (>1s) from ON	Tap to turn a luminaire on or off – hold to adjust luminaire brightness
1	Controls an elements	Click Long pressure (>1s) from ON	Tap to turn a device elements on or off – hold to adjust the element value
1	Control scene	Click Long pressure (>1s) from ON	Tap to turn a scene on or off – hold to adjust scene brightness
1	Active / Standby	Click Long pressure (>1s) from ON	Tap to switch between two scenes – hold to adjust current scene brightness

(*) FOR THE ALL THE OTHER FUNCTIONS CHECK CASAMBI APP INSTRUCTION ON WEB-SITE: [HTTP://www.casambi.com](http://www.casambi.com)

NOTE: N.O. Push Button by default is set in “Controls a luminaire”

Switch on, switch off and output dimming can be managed also by a normally open push button, conveniently set by Casambi APP.

➤ **MECHANICAL DIMENSION**





DALCNET S.r.l.
 Registered office: via Meucci, 35 - 36040 Brendola (VI) - Italy
 Headquarters: via Meucci, 35 - 36040 Brendola (VI) - Italy
 Tel. + 39 0444 1836680/1867452 Fax. + 39 0444 1867453
 VAT: IT-04023100235
 info@dalcnet.com www.dalcnet.com

DGD CASAMBI
Device Manual



Rev. 2018-06-29
 pag. 5/10

FW 1.0

TECHNICAL NOTE

Installation:

- Installation and maintenance must be performed only by qualified personnel in compliance with current regulations.
- The product must be installed inside an electrical panel protected against overvoltages.
- The product must be installed in a vertical or horizontal position with the cover / label upwards or vertically; Other positions are not permitted. It is not permitted to bottom-up position (with the cover / label down).
- Keep separated the circuits at 230V (LV) and the circuits not SELV from circuits to low voltage (SELV) and from any connection with this product. It is absolutely forbidden to connect, for any reason whatsoever, directly or indirectly, the 230V mains voltage to the bus or to other parts of the circuit.

Power Supply:

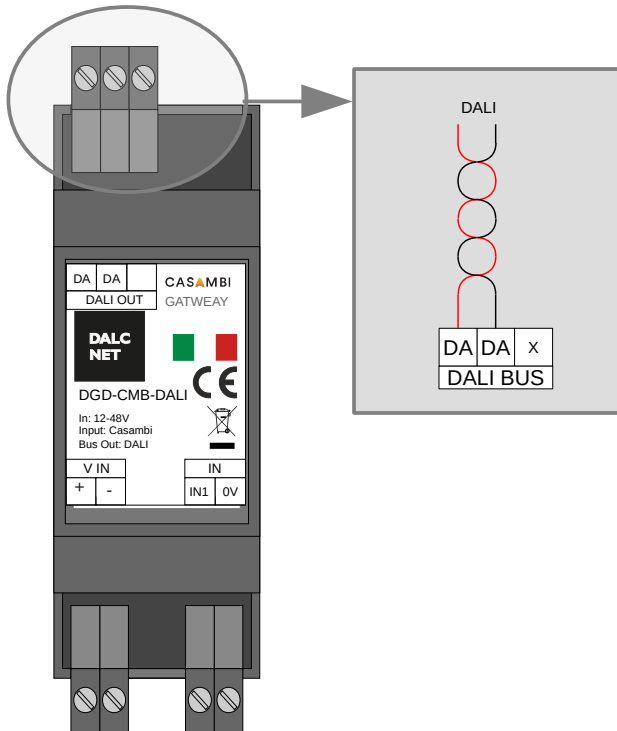
- For the power supply use only a SELV power supplies with limited current, short circuit protection and the power must be dimensioned correctly. In case of using power supply with ground terminals, all points of the protective earth (PE = Protection Earth) must be connected to a valid and certified protection earth.
- The connection cables between the power source "low voltage" and the product must be dimensioned correctly and they should be isolated from every wiring or parts at voltage not SELV. Use double insulated cables.
- Dimension the power supply for the load connected to the device. If the power supply is oversized compared with the maximum absorbed current, insert a protection against over-current between the power supply and the device.

Command:

- The length of the connection cables between the local commands (N.O. Push button or other) and the product must be less than 10m; the cables must be dimensioned correctly and they should be isolated from every wiring or parts at voltage not SELV. It is suggested to use double insulated shielded and twisted cables.
- The length and type of the connection cables at the BUS (DMX512, DALI or other) use cables as per specification of the respective protocols and regulations and they should be isolated from every wiring or parts at voltage not SELV. It is suggested to use double insulated shielded and twisted cables.
- All the product and the control signal connect at the bus (DMX512, DALI or other) and at the local command (N.O. Push Button or other) must be SELV (the devices connected must be SELV or supply a SELV signal)

WARNING: For optimal functionality of the Casambi signal, do not put the device into metal or aluminum boxes and do not shield the device.

➤ DGD-CBM-DALI SETUP CONVERSION FROM CASAMBI SIGNAL TO DALI PROTOCOL.



Features

The DGD-CBM-DALI is a Casambi-DALI converter.

The device receives the command signal of Casambi APP and, depending on the profile previously set, transforms the signal in a preset sequence of DALI addresses.

To control the conversion addresses Casambi-DALI, check the reference chart "ADDRESSES MAP – DALI". Page 7.

Signal LED

In case of Casambi command is correctly transmitted to the device, the LED signal stays consistently switched on.

In case of the device is power on, the signal LED slowly flashes (1 pulse per second).

In case of the bus power detected, the signal LED blinks fast (2 pulsed per second).

Relation with local commands:

When the device is switched on, by default, the local command (N.O. push button) is set on "controls a luminaire".

The local command can be set by Casambi APP.

The local command and the command from Casambi APP have the same priority.

NOTE: Bus DALI power supply is required.

When switched on the DGD-CBM-DALI resets the first 10 addresses of the DALI bus.



DALCNET S.r.l.
 Registered office: via Meucci, 35 - 36040 Brendola (VI) - Italy
 Headquarters: via Meucci, 35 - 36040 Brendola (VI) - Italy
 Tel. + 39 0444 1836680/1867452 Fax. + 39 0444 1867453
 VAT: IT-04023100235
 info@dalcnet.com www.dalcnet.com

DGD CASAMBI



Rev. 2018-06-29
 pag. 7/10

Device Manual

FW 1.0

ADDRESSES MAP – DALI

Load Type: White – up to 4 loads

Addr	Function	Map: Dimmer
+0	Dimmer 1	Dimmer (Brightness Value) 0 .. 254
+1	Dimmer 2	Dimmer (Brightness Value) 0 .. 254
+2	Dimmer 3	Dimmer (Brightness Value) 0 .. 254
+3	Dimmer 4	Dimmer (Brightness Value) 0 .. 254

Load Type: Tunable White – up to 2 loads

Addr	Function	Map: Tunable White
+0	Dimmer	Dimmer (Brightness Value) 0 .. 254
+1	Color Correction	Color Correction Temperature 0 .. 254

Load Type: RGB

Addr	Function	Map: RGB
+0	R	R 0 .. 254
+1	G	G 0 .. 254
+2	B	B 0 .. 254

Load Type: Mater+RGBW+Strobo

Addr	Function	Map: MRGB+
+0	Master Dimmer	Master Dimmer (Brightness Value) 0 .. 254
+1	R	R 0 .. 254
+2	G	G 0 .. 254
+3	B	B 0 .. 254
+4	Strobo Rate (*)	STROBO 0 .. 254

Load Type: RGBW

Addr	Function	Map: RGBW
+0	R	R 0 .. 254
+1	G	G 0 .. 254
+2	B	B 0 .. 254
+3	W	W 0 .. 254

Load Type: Master+RGBW+Strobo

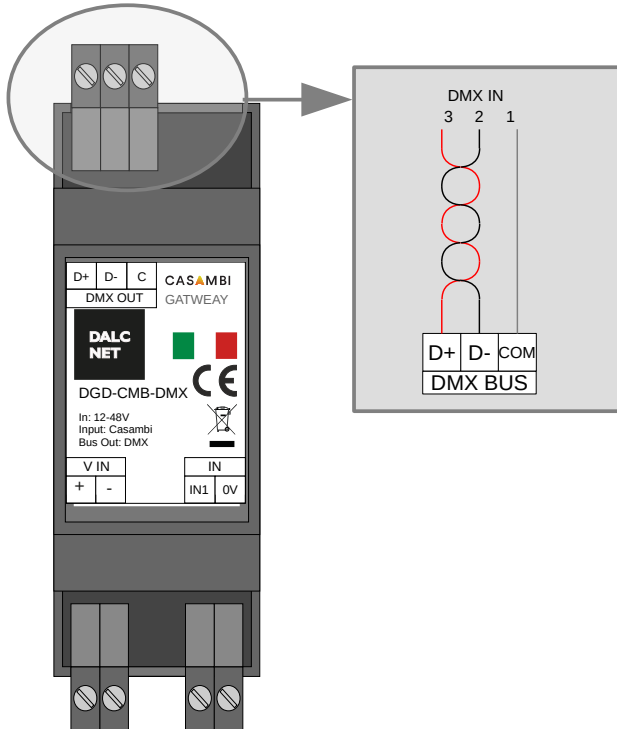
Addr	Function	Map: MRGBW+
+0	Master Dimmer	Master Dimmer (Brightness Value) 0 .. 254
+1	R	R 0 .. 254
+2	G	G 0 .. 254
+3	B	B 0 .. 254
+4	W	W 0 .. 254
+5	Strobo Rate (*)	STROBO 0 .. 254

(*) Strobo Rate execute the functions of the strobe address of the control unit connected to the DGD-CBM-DALI. For example, if you connect the DGD-CBM-DALI to the DLD1248-4CV-DALI control unit, which is also set with the MRGB+ or MRGBW+ map, the Strobo Rate address has the following characteristics:

+5	Strobo Rate	fix 0..15	blackout 16..31	1fps 32..47	2fps 48..63	3fps 64..79	4fps 80..95	5fps 96..111	6fps 112..127	7fps 128..143	8fps 144..159	9fps 160..175	10fps 176..191	12fps 192..207	14fps 208..223	16fps 224..239	fix 240..254
----	-------------	-----------	-----------------	-------------	-------------	-------------	-------------	--------------	---------------	---------------	---------------	---------------	----------------	----------------	----------------	----------------	--------------

For other devices, if present the Strobo address, check the behavior of the Strobo address.
 Custom maps can be requested on request.

➤ **DGD-CBM-DMX SETUP**
CONVERSION FROM CASAMBI SIGNAL TO DMX PROTOCOL



Features

The DGD-CBM-DMX is a Casambi-DMX converter.
 The device receives the command signal of Casambi APP and, depending on the profile previously set, converts the signal into a preset sequence of DMX channels.
 To consult the conversion channels Casambi-DMX , check the reference chart "CHANNELS MAP – DMX". Page 9.

Signal LED

In case of Casambi command is correctly transmitted to the device, the LED signal stays consistently switched on.
 In case of the device is power on, the signal LED slowly flashes (1 pulse per second).

Relation with local commands:

When the device is switched on, by default, the local command (N.O. push button) is set on "controls a luminaire".
 The local command can be set by Casambi APP.
 The local command and the command from Casambi APP have the same priority..



DALCNET S.r.l.
 Registered office: via Meucci, 35 - 36040 Brendola (VI) - Italy
 Headquarters: via Meucci, 35 - 36040 Brendola (VI) - Italy
 Tel. + 39 0444 1836680/1867452 Fax. + 39 0444 1867453
 VAT: IT-04023100235
 info@dalcnet.com www.dalcnet.com

DGD CASAMBI



Rev. 2018-06-29
 pag. 9/10

Device Manual

FW 1.0

CHANNELS MAP – DMX512

Load Type: White – up to 4 loads

Ch.	Function	Map: Dimmer
1	Dimmer 1	Dimmer (Brightness Value) 0 .. 255
2	Dimmer 2	Dimmer (Brightness Value) 0 .. 255
3	Dimmer 3	Dimmer (Brightness Value) 0 .. 255
4	Dimmer 4	Dimmer (Brightness Value) 0 .. 255

Load Type: Tunable White – up to 2 loads

Ch.	Function	Map: Tunable White
1	Dimmer	Dimmer (Brightness Value) 0 .. 255
2	Color Correction	Color Correction Temperature 0 .. 255

Load Type: RGB

Ch.	Function	Map: RGB
1	R	R 0 .. 255
2	G	G 0 .. 255
3	B	B 0 .. 255

Load Type: Mater+RGBW+Strobo

Ch.	Function	Map: MRGB+
1	Master Dimmer	Master Dimmer (Brightness Value) 0 .. 255
2	R	R 0 .. 255
3	G	G 0 .. 255
4	B	B 0 .. 255
5	Strobo Rate (*)	STROBO 0 .. 255

Load Type: RGBW

Ch.	Function	Map: RGBW
1	R	R 0 .. 255
2	G	G 0 .. 255
3	B	B 0 .. 255
4	W	W 0 .. 255

Load Type: Master+RGBW+Strobo

Ch.	Function	Map: MRGBW+
1	Master Dimmer	Master Dimmer (Brightness Value) 0 .. 255
2	R	R 0 .. 255
3	G	G 0 .. 255
4	B	B 0 .. 255
5	W	W 0 .. 255
6	Strobo Rate (*)	STROBO 0 .. 255

(*) Strobo Rate execute the functions of the strobe address of the control unit connected to the DGD-CBM-DMX. For example, if you connect the DGD-CBM-DMX to the DLD1248-4CV-DMX control unit, which is also set with the MRGB+ or MRGBW+ map, the Strobo Rate address has the following characteristics:

6	Strobo Rate	fix 0..15	blackout 16..31	1fps 32..47	2fps 48..63	3fps 64..79	4fps 80..95	5fps 96..111	6fps 112..127	7fps 128..143	8fps 144..159	9fps 160..175	10fps 176..191	12fps 192..207	14fps 208..223	16fps 224..239	fix 240..254
---	-------------	-----------	-----------------	-------------	-------------	-------------	-------------	--------------	---------------	---------------	---------------	---------------	----------------	----------------	----------------	----------------	--------------

For other devices, if present the Strobo address, check the behavior of the Strobo address.



DALCNET S.r.l.
 Registered office: via Meucci, 35 - 36040 Brendola (VI) - Italy
 Headquarters: via Meucci, 35 - 36040 Brendola (VI) - Italy
 Tel. + 39 0444 1836680/1867452 Fax. + 39 0444 1867453
 VAT: IT-04023100235
 info@dalcnet.com www.dalcnet.com

DGD CASAMBI



Rev. 2018-06-29
 pag. 10/10

Device Manual

FW 1.0

Load Type: MOVING HEAD DMX ¹⁾

Ch.	Function	Map: Moving MRGBW	
1	PAN	Moving Yoke / Moving Mirror Pan Coarse 0 .. 255	
2	TILT	Moving Yoke / Moving Mirror Tilt Coarse 0 .. 255	
3	Master Dimmer / Strobo	Master Dimmer (Brightness Value) 0 .. 127	Strobo 128 .. 255
4	R	R	0 .. 255
5	G	G	0 .. 255
6	B	B	0 .. 255
7	W	W	0 .. 255
8	Extra	0 .. 255	

¹⁾ This profile is only for DGD-CBM-DMX
Custom maps can be requested on request.