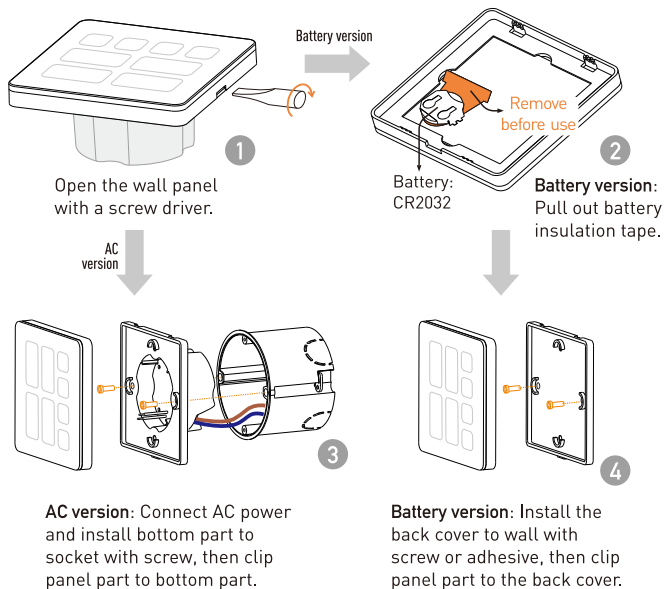


General Purpose Battery / AC power Group / Scene

Quick installation guide



Introduction

CW03 is a Casambi enabled touch sensing wall panel remote controller. It can be used as full function remote controller in Casambi system. There are two power supply options with AC power or cell battery. The AC version can fit traditional wall installation with AC power and the battery version can be installed at any preferred place.

CW03-A installation

1. Open the touch panel

The wall panel needs to be opened before installation. Please use a slot type screw driver to twist in the bottom side slot and open the panel. Please refer to picture 1.

2. Connect the AC power

Push the top of connector on the bottom part back and insert the L and N AC power cables. The maximum cable gauge is 1.5mm² or AWG16.

CAUTION! Cut off the AC power before installation to avoid electric shock!

3. Install the panel

Install the bottom part to wall socket with screws. After the bottom part is installed, clip the front panel part to the bottom part to finish the installation. Please refer to picture 3.

CW03-B installation

1. Open the touch panel

The wall panel needs to be opened before installation. Please use a slot type screw driver to twist in the bottom side slot and open the panel. Please refer to picture 1.

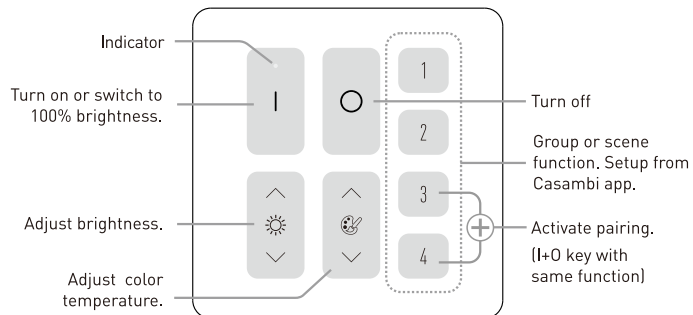
2. Prepare the battery

For new wall panel, please pull out the insulation tape under the battery. To change the battery please slide the battery out from the battery socket and insert a new one. The battery type is CR2032. Please refer to picture 2.

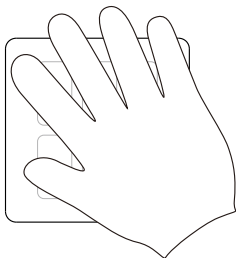
3. Install the panel

Install the back cover to preferred place by screw or double side adhesive tape, then clip the front panel part to the back cover and finish the installation. Please refer to picture 4.

Function



Easy Pat Turn-ON operation



Operation

4. Activate pairing

The wall panel needs to be paired to Casambi project to work. For pairing, user needs to activate pairing function by pressing key '3' and key '4' simultaneously and briefly. (The 'I' + 'O' key operation has same function)

After this operation, the wall panel can be discovered on Casambi app and can be added to Casambi projects.

5. Regular operation

All functions of the panel need to be defined on the Casambi app before using, please finish the Casambi setting before using.

Please refer to the key description diagram on the left page. User can turn ON/OFF light, set brightness or color temperature, and make group or scene setting on the panel. The brightness and color temperature adjustment supports both single touch and hold pressing.

6. Easy pat Turn-ON

Besides touching the turn on key to turn on lights, User can turn on lights by patting the panel with palm.

This operation makes the turn ON operation more convenient especially at dark environment.

Specification

AC version working voltage	AC 100-240V
Battery version working voltage	DC 3V, CR2032 battery
Wireless protocol	Casambi protocol
Frequency band	2.4GHz ISM band
Wireless power	< 8dBm
Working temperature	-10-40 °C