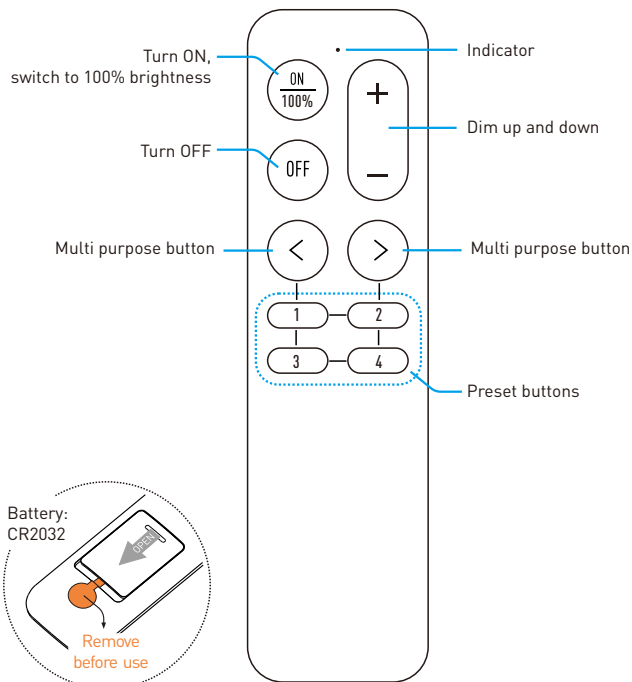


Function



Operation

1. Turn on / switch to 100%

Press to turn on the light from off status. When light is at 'ON' status, press this key to switch to 100% brightness.

2. Dim up and dim down

Press '+' and '-' key to dim up and dim down light with step of around 10%. Hold press for smooth dimming.

3. Adjust color temperature

Press '<' and '>' key to adjust color temperature of tunable white lights. Hold press for smooth changing.

4. Preset buttons

The function of 1-4 keys need to be defined on Casambi app before using. These keys can be configured as individual lamp control, group control, recall scenes or animations.

Please find the instruction on Casambi app to set the function for preset buttons.

5. Activate for app detection

The remote controller is not visible on Casambi app until it's activated. Please press and key together, or '3' and '4' key together to activate the remote.

Specification

Working voltage	DC 3V, CR2032 battery
Wireless protocol	Casambi smart lighting protocol
Frequency band	2.4GHz ISM band
Wireless power	< 8dBm
Working temperature	-20-55°C(-4-131°F)