

Submittal Data Sheet

Wilo Top S – Commercial Wet Rotor Circulators



Top S – Single Phase



Project:

Engineer:

Contractor:

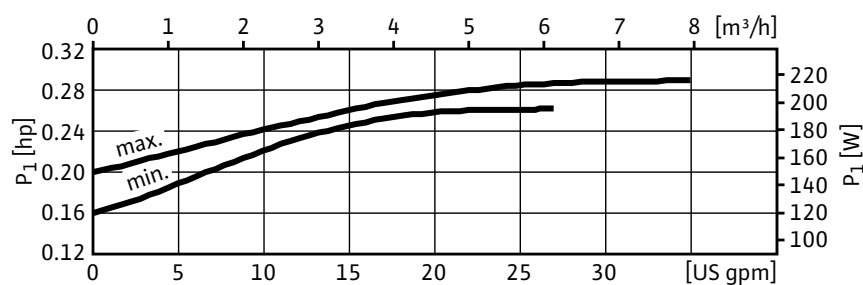
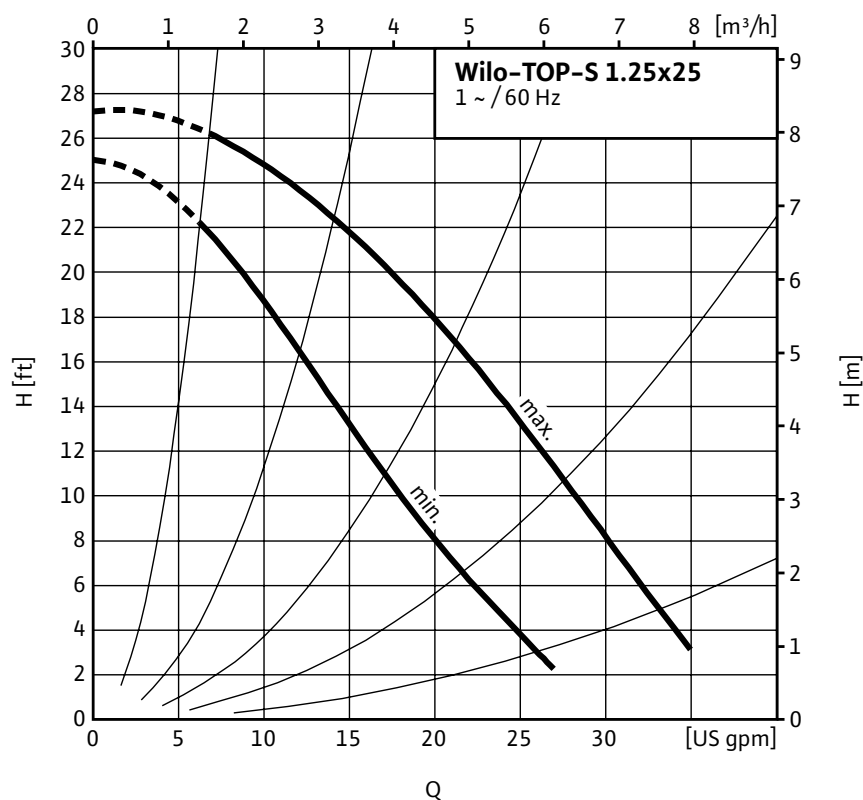
Submitted By:

Date:

Approved By:

Date:

Tag #	Model #	Speed	Flow	Head	HP	Phase	Voltage
	Top S 1.25 x 25					1	



Materials of Construction

Volute	Cast Iron (Closed Systems) Cataphoresis Coated
Impeller	Engineered composite (PP – 50% GF)
Shaft	Stainless Steel (X40 Cr13) / AISI 420SS
Bearing	Metal Impregnated Carbon
Degree of Protection	Enclosure
Protection Class	H

Technical Data

Max. Temp. Range	14°F 248°F (– 10°C to 120°C)
Ambient Temp. Range	32°F – 104°F (0°C – 40 °C)
Electrical Connections	1~115, 1~230v
Max. Working Pressure	145 PSI (10 Bar)
Min. Inlet Pressure 140 °F (60 °C)	1.8 PSI (0.1 Bar)
Min. Inlet Pressure 194 °F (90 °C)	7.3 PSI (0.5 Bar)
Min. Inlet Pressure 248 °F (120 °C)	29.9 PSI (2 Bar)

Applications

- Heating Systems
- Cold water and air-conditioning systems
- Geothermal Systems
- Water/Glycol up to 50%
- Solar Systems
- Industrial Circulation Systems

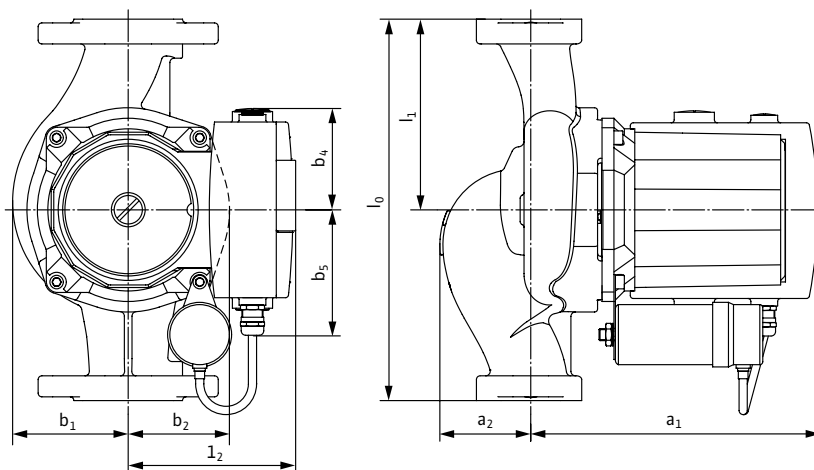
Approval Stamp

Submittal Data Sheet

Wilo Top S – Commercial Wet Rotor Circulators



Dimensions & Weights

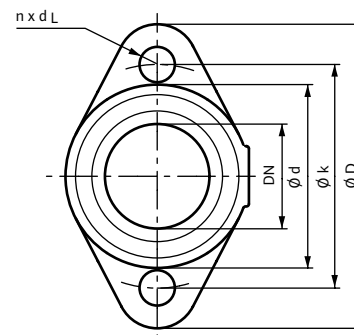


Dimensions and Weights

Model	Dimensions – Inches (mm)								Weight – lbs (kg)	
	l_0	l_1	l_2	a_1	a_2	b_1	b_2	b_4	b_5	
Top S 1.25 x 25	6½	3¼	4 ^{3/16}	7 ^{11/16}	1¼	2 ^{9/16}	2 ^{3/16}	2¾	3 ^{5/16}	14.1
	(165)	(82.5)	(106)	(195)	(32)	(65.5)	(56)	(70)	(83.5)	(6.4)

Flange Dimensions

Dimensions – Inches (mm)					
Dia. (DN)	ØD	Ød ₁	Ød ₂	Øk	n x d _L
1¼"	4¾	1 ^{3/8}	2 ^{7/8}	3½	2 x Ø ½
	(121)	(35)	(73)	(89)	(2 x Ø 14)



Motor Data

Model	hp	Speed	Watts	FLA	FLA
		RPM	W	1~115V	1~230V
Top S 1.25 x 25	1/8	2750–3100	195–215	1.9–2.0	0.9–1.0