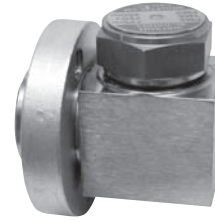


UTD450 UTD600

Universal Style Quick-Change Trap Module

Thermodynamic Steam Trap Module (mounts to **UC450** Universal Connectors)

| Model (Side Mount Style) | UTD450LSM UTD450SM | UTD600LSM |
|--------------------------------|---|-------------------------|
| Connections | Fits UC450 Series Universal Connectors | |
| Body Material | Stainless Steel | Stainless Steel |
| PMO Max. Operating Pressure | 450 PSIG | 600 PSIG |
| TMO Max. Operating Temperature | 750°F | 750°F |
| PMA Max. Allowable Pressure | 720 PSIG @ 100°F | 720 PSIG @ 100°F |
| TMA Max. Allowable Temperature | 800°F @ 400 PSIG | 800°F @ 600 PSIG |



**UTD450
&
UTD600**
**Thermodynamic
Steam Trap Module**
(Side Mount Style)
For vertical or horizontal
piping installations.

Steam trap modules can be used with other manufacturers' Universal Connectors.

Typical Applications

DRIP, TRACER: Designed for drip applications for the draining of condensate from steam mains and other steam supply lines as well as for tracing applications. The **UTD450 & UTD600** Steam Trap Modules can be used anywhere conventional thermodynamic steam traps are used. This trap module can be used on either vertical or horizontal piping installations and can mount to any 2-bolt Quick-Change Universal Connector.

How It Works

The UC450 universal connector is permanently installed into the pipeline where the steam trap would normally be placed. The trap module, which functions like any thermodynamic steam trap, is fastened to the universal connector with two bolts. When a new trap module is needed, it can be easily removed and replaced with a standard open-end or socket wrench without disturbing the existing piping.

Features

- Trap module can be easily removed and replaced in minutes without having to disconnect any piping
- Trap modules can be used with most manufacturers' 2-bolt universal connector
- All stainless steel construction with hardened seat

Sample Specification

The steam trap module shall be designed to attach to the industry standard two-bolt universal connector. Trap module shall be of a thermodynamic design. Universal connector shall conform to the two bolt industry standard with integral strainer and blowdown options.

Installation and Maintenance

Universal connector is first permanently installed (threaded, welded, flanged) into piping system. Trap module should be installed in orientation shown with cap facing upwards. The trap module is fastened to the universal connector using two bolts. If the trap fails for any reason, replace only the trap module. In vertical piping installations with upward flow, use of a blowdown valve is not recommended. Discharge would be in upward and unsafe direction.

Options

Universal Connectors are available with an integral strainer and blowdown valve. Connector is purchased separately. See the Universal Connectors section for more information.

Helpful Selection Information

Connector selection to use with the UTD450SM and UTD600LSM: UC450 (no strainer), UC450SR (strainer), UC450SBR (strainer and blowdown).

MATERIALS

| | |
|------------------|--|
| Body | Stainless Steel, AISI 420 |
| Disc | Stainless Steel, AISI 420 |
| Cap | Stainless Steel, AISI 416 |
| Insulation Cover | Stainless Steel, AISI 304 |
| Bolts | Steel, ASTM A193 GR B7 |
| Gaskets (2) | Spiral Wound 304 Stainless Steel with Grafoil Filler |

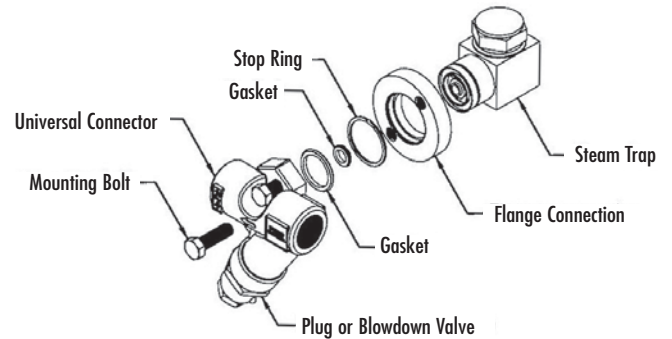
CAPACITIES – Condensate (lbs/hr)

| Model | Differential Pressure (PSI) | | | | | | | | | | | | | | | | |
|-----------|-----------------------------|-----|-----|-----|-----|-----|-----|-----|-----|-----|------|------|------|------|------|------|-----|
| | 4 | 10 | 15 | 20 | 25 | 30 | 40 | 50 | 75 | 100 | 150 | 200 | 250 | 300 | 400 | 450 | 600 |
| UTD450LSM | 140 | 215 | 242 | 270 | 295 | 320 | 355 | 390 | 455 | 510 | 600 | 670 | 730 | 790 | 880 | 925 | |
| UTD450SM | 247 | 370 | 420 | 475 | 520 | 560 | 625 | 685 | 800 | 900 | 1060 | 1185 | 1300 | 1400 | 1560 | 1630 | |
| UTD600LSM | | | | | | | | | | | 465 | 500 | 550 | 600 | 632 | 675 | 730 |

UTD450 UTD600

Universal Style Quick-Change Trap Module

Thermodynamic Steam Trap Module (mounts to UC450 Universal Connectors)



UTD450/UTD600 Trap Module should be oriented with cap facing Upwards, As shown.

| Horizontal Piping (Connector with Strainer) | Vertical Piping (Connector with Strainer) | Vertical or Horizontal Piping (No Strainer) |
|--|--|---|
| <p>Steam Flow to the Right or to the Left</p> <p>Trap shown with UC450SBR Connector</p> <p>Trap shown with UC450SBL Connector</p> | <p>Steam Flow Downward</p> <p>Trap shown with UC450SBR Connector</p> | <p>Steam Flow Vertically or Horizontally</p> <p>Trap shown with UC450 Connector</p> |

Connectors available in 1/2", 3/4" and 1" sizes in NPT and Socket-Weld Connections

UC450SR
CONNECTOR
Strainer

UC450SBR
CONNECTOR
Strainer & Blowdown

**UTD450SM
or
UTD600LSM
Steam Trap**

UC450SBL
CONNECTOR
Strainer & Blowdown

| DIMENSIONS - inches | | | |
|---------------------|------|------|------|
| Size | A | B | C |
| 1/2" | 3.31 | 3.25 | 3.78 |
| 3/4" | 3.31 | 3.25 | 3.78 |
| 1" | 3.62 | 3.44 | 3.95 |