

Y-Type Strainers • Carbon Steel / Stainless Steel

Model	CSY, SSY
Sizes	1/2", 3/4", 1", 1 1/2", 2"
Connections	NPT, SW
Body Material	Carbon Steel (CSY) Stainless Steel (SSY)

PRESSURE/TEMPERATURE RATINGS

Carbon Steel	NPT	600 PSIG @ 489°F
Stainless Steel	NPT	600 PSIG @ 489°F

Typical Applications

The CSY/SSY Y-Strainers are used to strain dirt particles from fluid in pipelines and provide inexpensive protection for costly pumps, meters, valves, traps, turbines and compressors.

Features

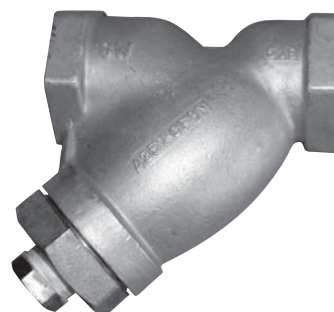
- Machined seat assures perfect fit for screen
- Blowdown connection and easily removable stainless steel cylindrical screens for easy maintenance
- Choice of carbon steel or stainless steel bodies

Installation

The strainer should be installed in the flow direction as indicated on the body in either a vertical down or horizontal pipeline. The strainer must be accessible for periodic cleaning.

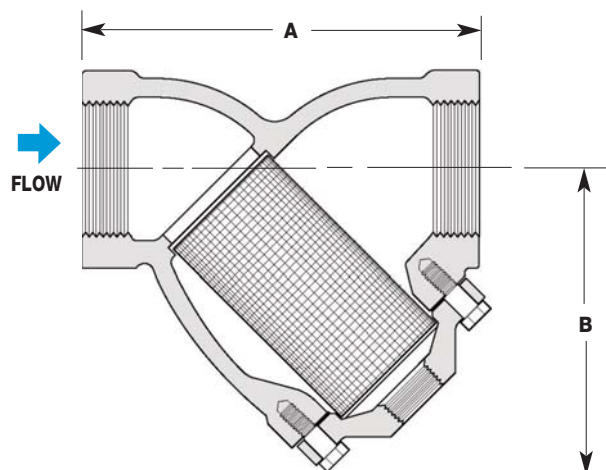
HOW TO ORDER

Specify connection size and connection configuration (NPT or SW) that will meet application requirements.



MATERIALS

	CSY Carbon Steel	SSY Stainless Steel
Body	Steel, A216 GR WCB	SS, A351 GR CF8M
Plug	Steel, A216 GR WCB	SS, A351 GR CF8M
Cover	Steel, A216 GR WCB	SS, A351 GR CF8M
Screen	Stainless	Stainless
Gasket	SS Spiral Wound	SS Spiral Wound



DIMENSIONS & WEIGHTS – inches

Size	Connection	Model Code Carbon Steel	Model Code Stainless Steel	Screen Mesh Size	A	B	Blowdown NPT	Weight lbs
1/2"	NPT	CSY-12-N-020	SSY-12-N-020	20	3	27/16	1/4	1.5
	SW	CSY-12-SW-020	SSY-12-SW-020					
3/4"	NPT	CSY-13-N-020	SSY-13-N-020	20	3 3/4	2 15/16	3/8	2.5
	SW	CSY-13-SW-020	SSY-13-SW-020					
1"	NPT	CSY-14-N-020	SSY-14-N-020	20	4 5/8	3 3/4	3/8	5
	SW	CSY-14-SW-020	SSY-14-SW-020					
1 1/2"	NPT	CSY-16-N-020	SSY-16-N-020	20	5 5/8	4 13/16	3/4	9
	SW	CSY-16-SW-020	SSY-16-SW-020					
2"	NPT	CSY-17-N-020	SSY-17-N-020	20	7	6 1/8	1	13
	SW	CSY-17-SW-020	SSY-17-SW-020					

For special mesh screens; Consult factory.

CS not recommended for prolonged use above 800°F.

SS not recommended for prolonged use above 1000°F.