



Established 1958

Float & Thermostatic Steam Traps

Series TA-FTH

(High Capacity)

Operation

Tunstall Corporation produces a full line of Float & Thermostatic Steam Traps containing a float valve mechanism which modulates to discharge condensate continuously, while non-condensable gases are released by a separate internal balanced pressure thermostatic air vent (The Tunstall Capsule®).

The “FTH” series traps are designed for use in systems that produce an exceptionally large amount of condensate (625 to 24,000 lbs. of condensate per hour). Two sizes (1-1/2" & 2") available for low, medium and high pressure applications with a “H” pattern piping connection for maximum installation flexibility.

All Tunstall float and thermostatic traps can be serviced without disturbing system piping.

Features

- Rapid condensate removal.
- Stainless steel balanced pressure thermostatic air vent (Tunstall Capsule®).
- All stainless steel internal components
- Variety of piping connections.
- Designed to withstand water hammer & high load demands.
- Designed for In-line repair.
- Made in the U.S.A.

Construction

Tunstall float and thermostatic traps feature all stainless steel interiors, heavy duty trap housings, easy access to internal parts and convenient piping connections.



Float & Thermostatic Traps

Materials of Construction	
Body & Cover	Cast Iron-ASTMA 126CI B
Valve Head	Stainless Steel
Valve Seat	Stainless Steel
Valve Seat Gasket	Non-Asbestos
Float	Stainless Steel
Bracket & Lever Assembly	Stainless Steel
Thermostatic Air Vent	Tunstall Capsule® Stainless Steel
Cover Bolts	Carbon Steel Grade 5
Cover Gasket	Non-Asbestos
Draining Plug	Stainless Steel



Tunstall Corporation
118 Exchange Street · Chicopee, MA 01013

© August 2014

We reserve the right to alter designs, specifications and information without notice.

Phone (413) 594-8695 · Fax (413) 598-8109
www.maconbalancing.com

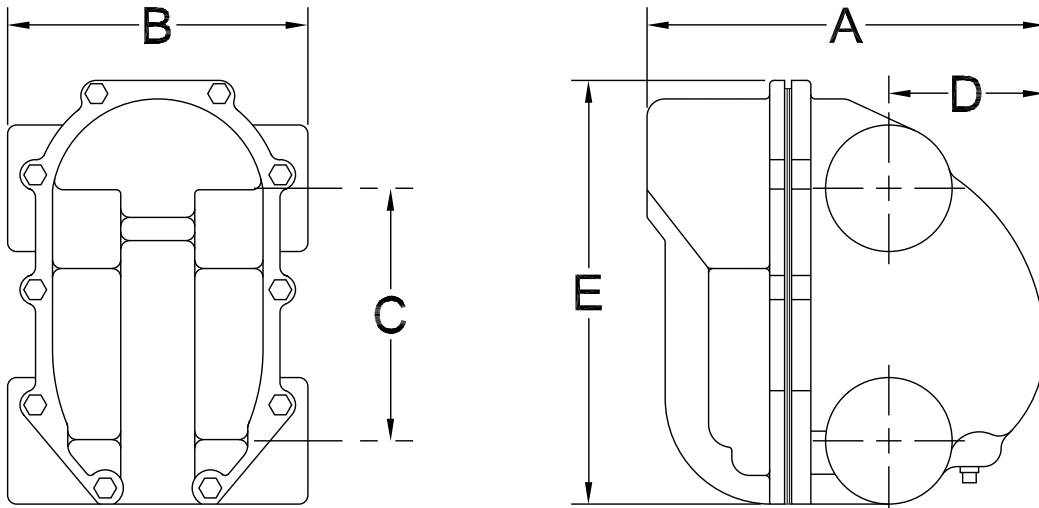
Bulletin-TA-Series-TA-FTH-0814
Float & Thermostatic Traps

Float & Thermostatic Steam Traps - Series TA-FTH

Engineering Specifications

Capacities lbs. Condensate per hour			Differential Pressure (PSI)														
Model	Size NPT	PSIG Orifice	1/4	1/2	1	2	5	10	15	20	25	30	40	50	75	100	125
TA-FTH6-15	1-1/2"	1.032	6400	7500	9300	13000	16500	21000	24000								
TA-FTH8-15	2"	1.032	6400	7500	9300	13000	16500	21000	24000								
TA-FTH6-30	1-1/2"	.762	2575	4500	5650	8750	11800	14500	17500	19500	20600	21600					
TA-FTH8-30	2"	.762	2575	4500	5650	8750	11800	14500	17500	19500	20600	21600					
TA-FTH6-75	1-1/2"	.500	1500	2750	3500	4750	6300	7750	9250	10500	12250	12500	13500	14500	17000		
TA-FTH8-75	2"	.500	1500	2750	3500	4750	6300	7750	9250	10500	12250	12500	13500	14500	17000		
TA-FTH6-125	1-1/2"	.328	625	825	1100	1550	2100	3000	3500	3900	4200	4400	5000	5500	6750	7750	8700
TA-FTH8-125	2"	.328	625	825	1100	1550	2100	3000	3500	3900	4200	4400	5000	5500	6750	7750	8700

All 1-1/2" & 2" SERIES TA-FTH Float & Thermostatic Traps



Front View

Side View

Model	Size	DIMENSIONS (Inches)					Weight (lbs.)	Repair Kit
		A	B	C	D	E		
TA-FTH6-15	1-1/2"	11.00	8.50	7.00	4.25	12.00	48	TA-4FPH-TA-15
TA-FTH8-15	2"	11.00	8.50	7.00	4.25	12.00	48	TA-5FPH-TA-15
TA-FTH6-30	1-1/2"	11.00	8.50	7.00	4.25	12.00	48	TA-4FPH-TA-30
TA-FTH8-30	2"	11.00	8.50	7.00	4.25	12.00	48	TA-5FPH-TA-30
TA-FTH6-75	1-1/2"	11.00	8.50	7.00	4.25	12.00	48	TA-4FPH-TA-75
TA-FTH8-75	2"	11.00	8.50	7.00	4.25	12.00	48	TA-5FPH-TA-75
TA-FTH6-125	1-1/2"	11.00	8.50	7.00	4.25	12.00	48	TA-4FPH-TA-125
TA-FTH8-125	2"	11.00	8.50	7.00	4.25	12.00	48	TA-5FPH-TA-125

