



Established 1958

Thermostatic Radiator Steam Traps

Series DBC

Direct Replacement for

Dunham Bush 1E and MEPCO 1E

Operation

Tunstall Corporation produces a complete line of thermostatic radiator steam traps with ratings from 25" HG vacuum to 25 psig. All units are "normally open" to expel air and water and will "close" at saturated steam temperature thereby preventing steam from entering into condensate return lines. Each Tunstall Steam Trap features the Tunstall Capsule® which has become the best steam trap replacement element available today.

Features

- Forged brass body, cover, nut and tail piece
- No need to change piping when replacing Dunham Bush 1/2" 1E and MEPCO 1/2" 1E, identical nut, tail piece and rough-in dimensions
- TIG welded stainless steel Tunstall Capsule®
- Calibrated, inspected and tested
- Removable and replaceable in-line threaded stainless steel non-corrosive seat

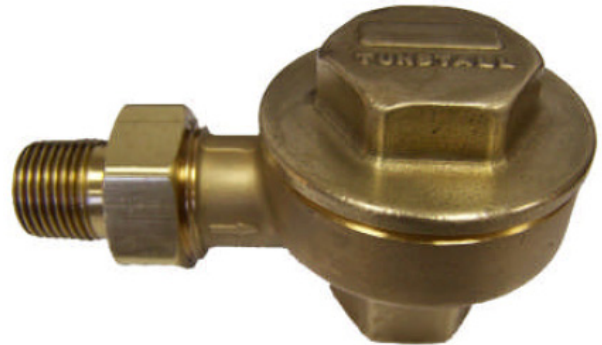
Benefits

- Simple installation
- Corrosion resistant stainless steel internals
- Calibrated Tunstall Capsule® for uniform balanced pressure operation
- Energy and fuel savings

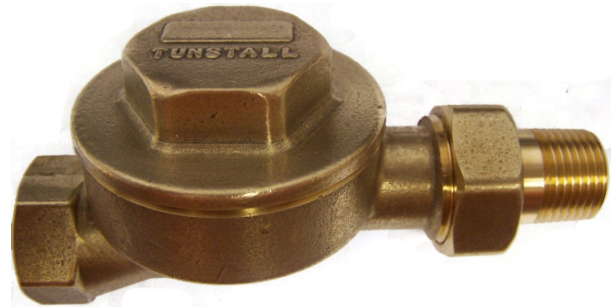
Typical Specification

Furnish and install Tunstall Thermostatic Steam Traps Series DBC as shown or as specified on plans and in accordance with manufacturer's instructions. The trap body and cover shall be forged brass and provided with an entirely stainless steel Tunstall Capsule®. Rating shall be _____ lbs/hr at _____ PSIG pressure differential. Each unit shall be guaranteed for 12 months from date of installation.

The Tunstall Capsule® professionally upgrades all thermostatic steam traps. Refer to catalog #795 or www.tunstall-inc.com for more detailed information.



TA-1/2-DBC-A



TA-1/2-DBC-S

Thermal-Disc &
Thermostatic Traps

Applications

- Cast Iron Radiators
- Finned Tube Radiation
- Convectors
- Air Coils
- Sterilizers
- Drips
- Replaces existing Dunham Bush/MEPCO



Thermostatic Radiator Steam Traps - *Series DBC*

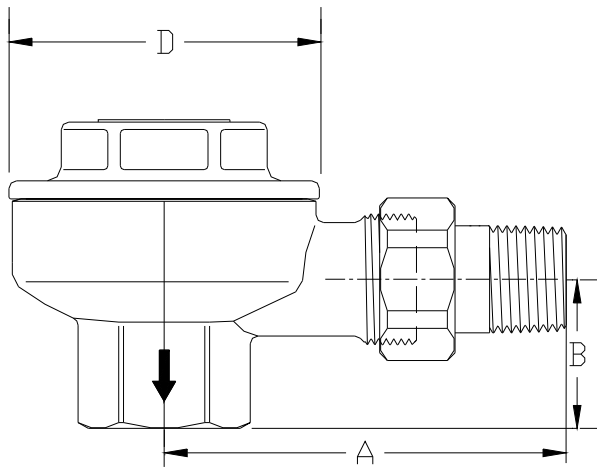
Engineering Specifications

CAPACITIES*

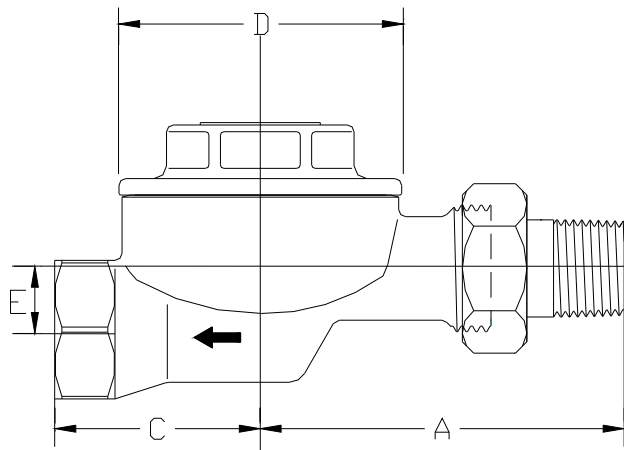
Model	Size NPT	DIFFERENTIAL PRESSURE (PSI)								
		Square Feet EDR**								
		1/4	1/2	1	1-1/2	2	5	10	15	25
TA-1/2-DBC-A	1/2"	90	120	165	200	230	320	500	625	825
TA-1/2-DBC-S	1/2"	90	120	165	200	230	320	500	625	825

* Ratings are in accordance with standards established by The Steam Heating Equipment Manufacturers Association (SHEMA). No safety factor required.

** To convert Square Feet EDR to pounds of condensate per hour: Divide the square foot ratings by 4.
 One Square Foot EDR is equivalent to net emission of 240 BTU per hour with 215°F steam in the radiator surrounded by 70°F air temperature.
 One pound of condensate is equivalent to approximately 1000 BTU; 1000 BTU is equivalent to approximately 4 square feet EDR.



TA-1/2-DBC-A



TA-1/2-DBC-S

Model No.	Pipe Size	Pattern	A	B	C	D	E	Weight	Capsule
TA-1/2-DBC-A	1/2"	Angle	3-1/8"	1-1/8"	--	2-7/16"	--	1.25 lbs	TFTA-2901
TA-1/2-DBC-S	1/2"	Straight	3-1/8"	--	1-3/4"	2-7/16"	1/2"	1.40 lbs	TFTA-2901

