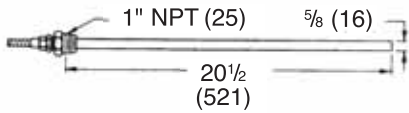
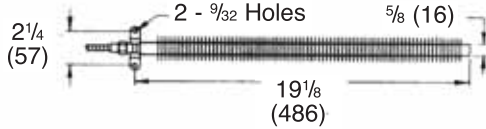


# THERMOSTAT BULBS

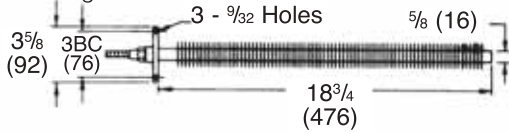
FOR USE WITH T14, T124, T134, T52 PILOTS



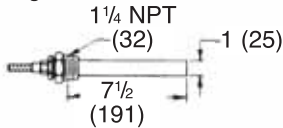
**STYLE NO. 700**—Plain Bulb with 1" Union Connection.



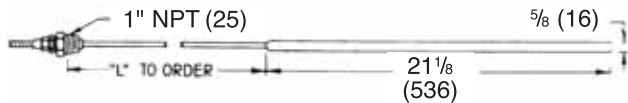
**STYLE NO. 702**—Finned Bulb with Wall Mounting Bracket. For space heating.



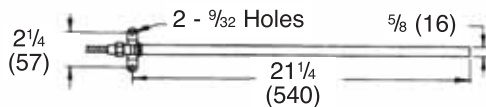
**STYLE NO. 703**—Finned Bulb with Duct Mounting Flange. For forced warm air heating.



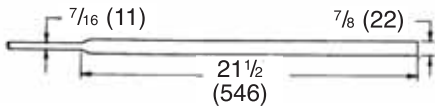
**STYLE NO. 704**—Plain Short Bulb with 1-1/4" Union Connection. For installations where depth is limited.



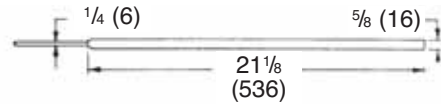
**STYLE NO. 706**—Plain Bulb with 1" Union Connection and 1/4" OD Bendable Extension. Dimension "L" must be specified.



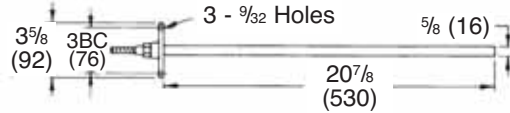
**STYLE NO. 708**—Plain Bulb with Wall Mounting Bracket. Used for space heating when dust is a problem.



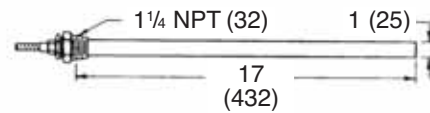
**STYLE NO. 711**—Bulb Lead Covered. Chemical lead covering homogeneously bonded to bulb and to lead sheathing on capillary.



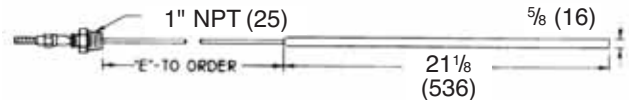
**STYLE NO. 712**—Plain Bulb with 1/4" OD Bendable Tubing Cover for Capillary. Used in open tanks or where a mounting connection is not required.



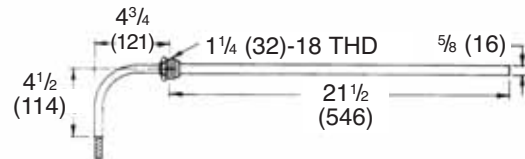
**STYLE 713**—Plain Bulb with Duct Mounting Flange. For forced warm air heating when dust is a problem.



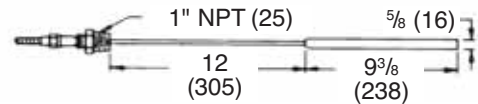
**STYLE NO. 701**—Large Plain Bulb with 1-1/4" Union Connection. Used on pilots having more than 30 feet of flexible tubing and with dial thermometer having 20 to 120°F range.



**STYLE NO 731**—Plain Bulb with Adjustable Extension. Used in oil storage tanks or wherever it is desirable to change position of bulb. Dimension "E" must be specified.

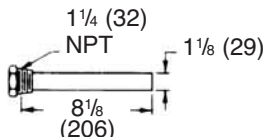


**STYLE NO. 740**—Sanitary Bulb for Milk Heaters. Threaded to fit standard No. 23A Thermometer Ferrule. Stainless Steel Bulb and Flexible Tubing.

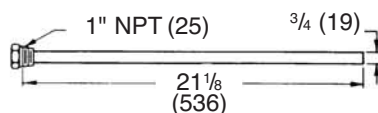


**STYLE NO. 732**—Special Bulb with 12" Adjustable Extension.

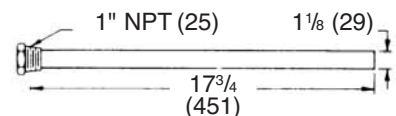
# THERMOSTAT WELLS



**727 WELL**—Used with 704 Bulb



**728 WELL**—Used with 700 and 800 Bulb



**729 WELL**—Used with 701 and 801 Bulb