



SPECIALTIES

Float and Thermostatic Trap - Series 46 & 48

APPLICATION

The **MEPCO** Series 46 & 48, Float & Thermostatic Traps are applicable to all types of steam heating systems and steam process equipment that produce exceptionally large amounts of condensate. These traps operate efficiently for low, medium & high pressure applications. Their purpose is to discharge air and condensate while preventing steam from entering the return piping.

These traps are manufactured in two sizes (1-1/2" & 2") for handling capacities of 425 to 24,000 lbs. of condensate per hour. Four (4) possible connections allow a greater flexibility in piping.



Series 46 & 48 Float & Thermostatic Trap (Double Inlet/Outlet with Stainless Steel Internals)

FEATURES & BENEFITS

1. Heavy duty construction throughout. Body and cover are rugged cast iron; all working parts are made of non-corrosive metals especially adapted for this service.

2. Instantaneous valve action. Design of the float valve assembly permits rapid and positive valve action. Location of the valve assures a deep water seal at all times.

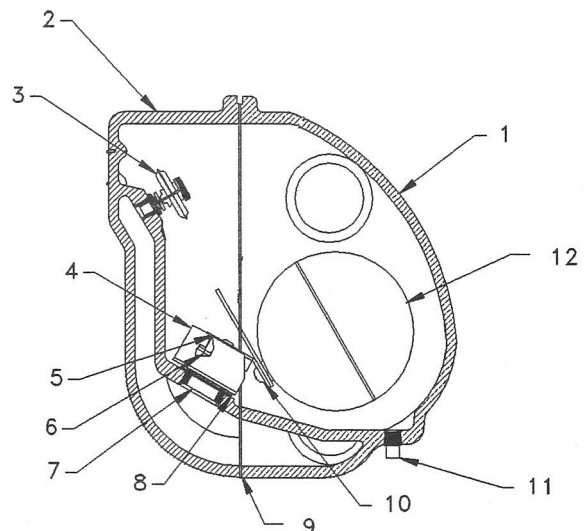
MEPCO reserves the right to make changes in specifications and design without notice.

PARTS/MATERIALS - 46 & 48 series trap (48 series shown in picture)

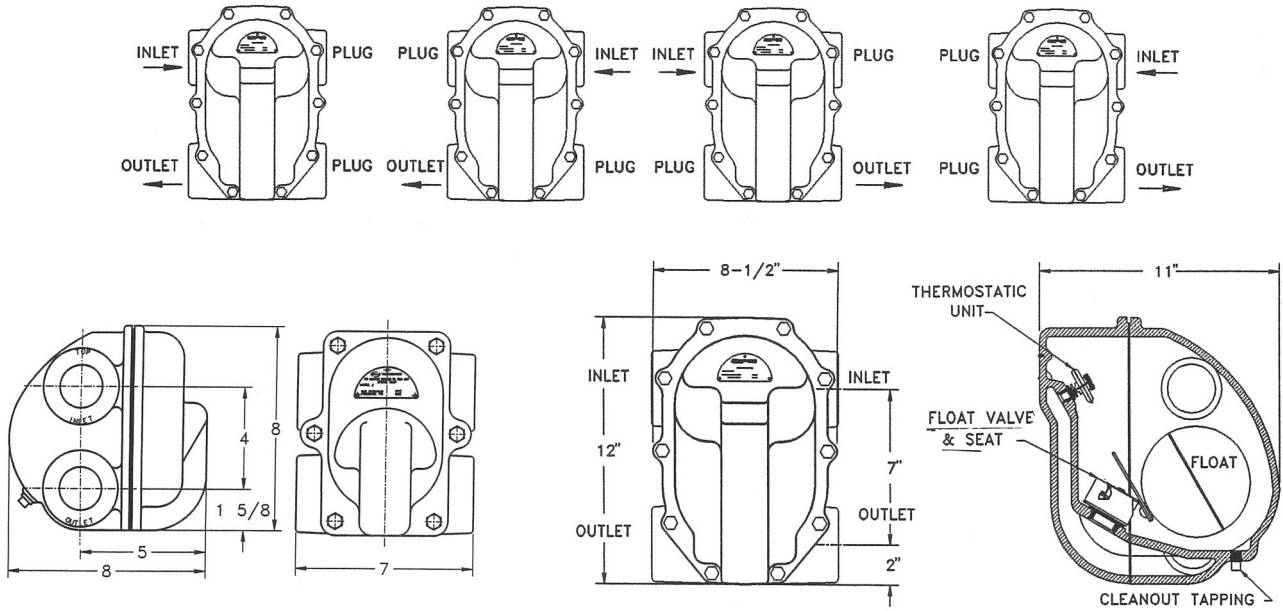
| ITEM | PART | MATERIAL |
|------|-----------------|-------------------------|
| 1 | Body | Cast Iron |
| 2 | Cap | Cast Iron |
| 3 | Thermal Element | Stainless Steel & Brass |
| 4 | Bracket | Stainless Steel |
| 5 | Lever | Stainless Steel |
| 6 | Valve | Stainless Steel |
| 7 | Seat | Stainless Steel |
| 8 | Gasket | Cellulose, Aramid Fiber |
| 9 | Gasket | Cellulose, Aramid Fiber |
| 10 | Washer & Screw | Stainless Steel |
| 11 | Plug 1/4" NPT | Steel (Grade 2) |
| 12 | Float | Stainless Steel |

3. Continuous rapid flow of condensate. A lever operated discharge valve opens wide so that large volumes of condensate can flow continuously from trap. Increased full flooded condensate capacity with quick and positive action is assured by the float mechanisms double fulcrum design.

4. Minimum maintenance. All working parts may be inspected, removed or repaired without disturbing piping connections. Clean-out plug at bottom of trap body permits easy flushing.



Dimensions and Capacities



SERIES 46 F & T TRAP - WGT. 24 lbs.

SERIES 48 F & T TRAP - WGT. 48 LBS.

Capacities

| MODEL NO. | 46-715 46-815 | 48-715 48-815 | 46-730 46-830 | 48-730 48-830 | 46-775 46-875 | 48-775 48-875 | 46-7125 46-8125 | 48-7125 48-8125 | |
|----------------------------------|------------------|---|------------------|------------------|------------------|------------------|--------------------|--------------------|------|
| NPT SIZE | 1-1/2" 2" | 1-1/2" 2" | 1-1/2" 2" | 1-1/2" 2" | 1-1/2" 2" | 1-1/2" 2" | 1-1/2" 2" | 1-1/2" 2" | |
| ORIFICE SIZE | .625 | 1.032 | .500 | .762 | .312 | .500 | .250 | .328 | |
| PRESSURE DIFFERENTIAL PSI | 1/4 | 2700 | 6400 | 1500 | 2575 | 600 | 1500 | 425 | 625 |
| | 1/2 | 3000 | 7500 | 2750 | 4500 | 825 | 2750 | 600 | 825 |
| | 1 | 4000 | 9300 | 3500 | 5650 | 1000 | 3500 | 750 | 1100 |
| | 2 | 5000 | 13000 | 4750 | 8750 | 1225 | 4750 | 900 | 1550 |
| | 5 | 7500 | 16500 | 6300 | 11800 | 1575 | 6300 | 1250 | 2100 |
| | 10 | 10000 | 21000 | 7750 | 14500 | 1875 | 7750 | 1600 | 3000 |
| | 15 | 11750 | 24000 | 9250 | 17500 | 2175 | 9250 | 1750 | 3500 |
| | 20 | THIS MODEL NUMBER TRAP IS NOT APPLICABLE BEYOND THIS PRESSURE DIFFERENTIAL | | 10500 | 19500 | 2500 | 10500 | 2100 | 3900 |
| | 25 | | | 11500 | 20600 | 2750 | 11500 | 2250 | 4200 |
| | 30 | | | 12500 | 21600 | 3000 | 12500 | 2500 | 4400 |
| | 40 | | | | | 3500 | 13500 | 2750 | 5000 |
| | 50 | | | | | 4000 | 14500 | 3000 | 5500 |
| | 60 | | | | | 4500 | 15500 | 3250 | 6250 |
| | 75 | | | | | 5000 | 17000 | 3600 | 6750 |
| 90 | | | | | | | 3900 | 7500 | |
| 100 | | | | | | | 4100 | 7750 | |
| 125 | | | | | | | 4500 | 8700 | |

Capacities given are continuous discharge capacities in pounds of condensate per hour at pressure differential indicated, determined by tests conducted according to ASME Performance test Code 39.1-1980. Apply Safety Factor as required per application. Condensate within 5 degrees of steam temperature.

3695 44th Street SE, Grand Rapids, MI 49512 (P) 616.971.

3420 (F) 616.971.3421 www.mepcollc.com