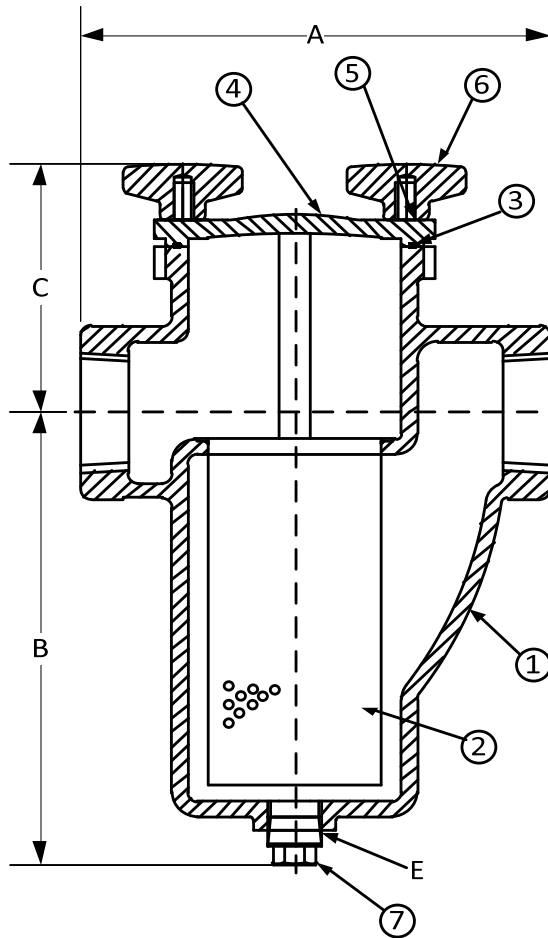


DRAWING NO.
AL 91010

BODY PRESSURE & TEMPERATURE RATINGS – NON SHOCK

NOM. RATING	MEDIA	1/4" to 3"
CLASS 125	W.O.G.	200 PSI @ 150°F



PARTS LIST

ITEM	DESCRIPTION	MATERIAL
1	BODY	CAST IRON (ASTM A 126, CLASS B)
2	BASKET	STAINLESS STEEL (304)
3	O-RING	BUNA-N (MAX TEMPERATURE 150°F)
4	COVER	CAST IRON (ASTM A 126, CLASS B)
5	STUDS	CARBON STEEL (ASTM A 193, GRADE B7)
6	KNOBS	CAST IRON (ASTM A 126, CLASS B)
7	PLUG	CAST IRON (ASTM A 126, CLASS B)

Product Number†	SIZE	DIMENSIONS (in)				COVER		WEIGHT (lbs)
		A	B	C	E	No. of Knobs	Size of Studs	
1/41THS-CI062P34-BOKI	1/4	4-9/16	4	3-1/8	3/8	2	3/8-16 x 2	8
3/81THS-CI062P34-BOKI	3/8	4-9/16	4	3-1/8	3/8	2	3/8-16 x 2	8
1/21THS-CI062P34-BOKI	1/2	4-9/16	4	3-1/8	3/8	2	3/8-16 x 2	8
3/41THS-CI062P34-BOKI	3/4	4-9/16	4	3-1/8	3/8	2	3/8-16 x 2	8
11THS-CI062P34-BOKI	1	5-5/16	4-7/8	3	3/8	2	3/8-16 x 2	10
11/41THS-CI062P34-BOKI	1-1/4	6-5/16	6-1/2	4-1/8	1/2	2	3/8-16 x 2-3/8	17
11/21THS-CI062P34-BOKI	1-1/2	6-5/16	6-1/2	4-1/8	1/2	2	3/8-16 x 2-3/8	17
21THS-CI062P34-BOKI	2	8-1/4	7-7/8	4-3/4	3/4	2	1/2-13 x 2-1/2	30
21/21THS-CI062P34-BOKI	2-1/2	9-5/8	8-3/4	4	1	2	1/2-13 x 2-7/8	34
31THS-CI062P34-BOKI	3	11-1/4	11-3/8	5-7/8	1	2	5/8-11 x 3	42

†See "Style KT7 Product Number Configuration" for additional options.

Face to face values tolerance in compliance with ASME B16.4.

STANDARD SCREENS SUPPLIED

SIZE	SCREEN PERFORATION	
	FOR LIQUID	OPEN AREA
in	in	
1/4 to 3	1/16	30%

Standard screens supplied are for **liquid service**, unless otherwise specified.
Options: Other meshes, perforations, and screen materials are available.

KECKLEY

3400 CLEVELAND SKOKIE ILLINOIS

DIMENSIONAL ASSEMBLY

Class 125 NPT Style KT7 Cast Iron

Basket Strainer w/ 304 ss screen

MAT'L: Cast Iron (IMPORT)

REQ. ---

DRAWING NO.
AL 91010

PART NO.

SCALE: NTS

DATE: 10/25/2021

DR. BY DSF