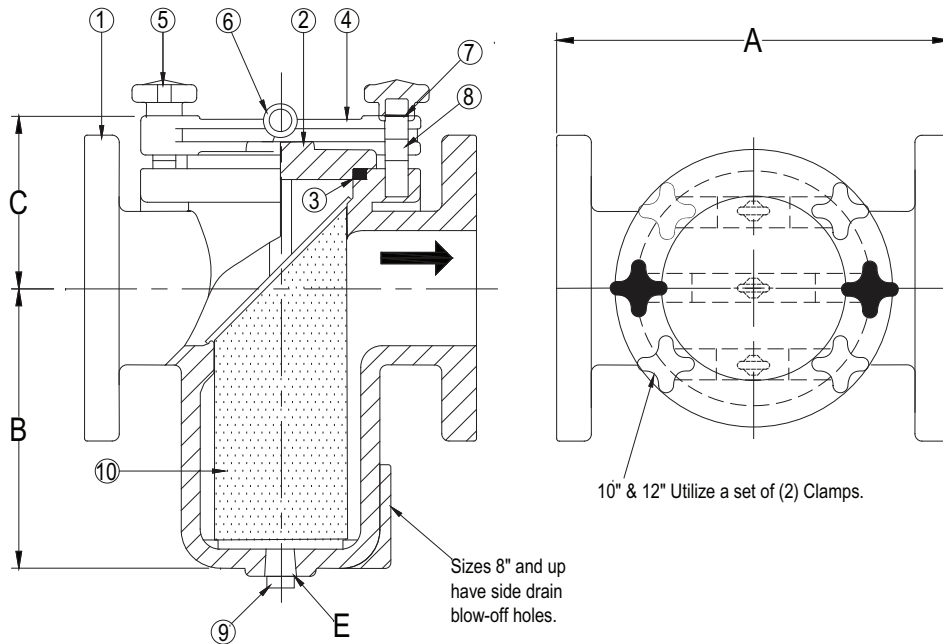


DRAWING NO.



BODY PRESSURE & TEMPERATURE RATINGS – NON SHOCK		
NOM. RATING	MEDIA	2" to 12"
125# (STANDARD FLANGE)	W.O.G.	200 PSI @ 100°F

PARTS LIST		
ITEM	DESCRIPTION	MATERIAL
1	BODY	CAST IRON (ASTM A 126, CLASS B)
2	COVER	CAST DUCTILE IRON (ASTM A 536, GRADE 65-45-12)
3	O-RING	NITRILE
4	CLAMP	CAST DUCTILE IRON (ASTM A 536, GRADE 65-45-12)
5	HAND NUT	CAST DUCTILE IRON (ASTM A 536, GRADE 65-45-12)
6	EYE BOLT	CARBON STEEL (ASTM A 307)
7	BUSHING	STAINLESS STEEL (304)
8	FULL BOLT	CARBON STEEL (ASTM A 307)
9	PIPE PLUG	MALLEABLE IRON
10	BASKET	STAINLESS STEEL (304)


Product Number†	SIZE	DIMENSIONS (in)				WEIGHT (lbs)
		A	B	C	E	
21FFS-CI062P34-NOC	2	8	4-7/8	3-3/4	3/4	27
21/21FFS-CI062P34-NOC	2-1/2	8-1/4	5-13/16	3-13/16	3/4	38
31FFS-CI062P34-NOC	3	9-3/4	7-1/8	4-3/4	3/4	49
41FFS-CI062P34-NOC	4	11-1/2	8	5-3/8	1	63
51FFS-CI125P34-NOC	5	13-1/8	8-1/2	6-3/4	1	95
61FFS-CI125P34-NOC	6	14-3/4	9-3/8	6-15/16	1	127
81FFS-CI125P34-NOC	8	18-1/2	11-1/2	9-1/4	1-1/2	230
101FFS-CI125P34-NOC	10	20-1/8	13-9/16	11	1-1/2	408
121FFS-CI125P34-NOC	12	26-1/4	16-3/16	13-3/8	2	536

†See "Style GFKV Product Number Configuration" for additional options.
Face to face values tolerance in compliance with ASME B16.1.

STANDARD SCREENS SUPPLIED

SIZE	SCREEN PERFORATION	
	FOR LIQUID	OPEN AREA
in	in	
2 to 4	1/16	30%
5 to 12	1/8	43%

Standard screens supplied are for liquid service, unless otherwise specified.
Options: Other meshes, perforations, and screen materials are available.

		DRAWING NO.
3400 CLEVELAND SKOKIE ILLINOIS		
DIMENSIONAL ASSEMBLY		PART NO.
125# Flange Style GFKV Cast Iron		SCALE: NTS
Basket Strainer w/ 304 ss screen		DATE: 09/21/2020
MAT'L: (As Noted Above)	REQ. ---	DR. BY DSF