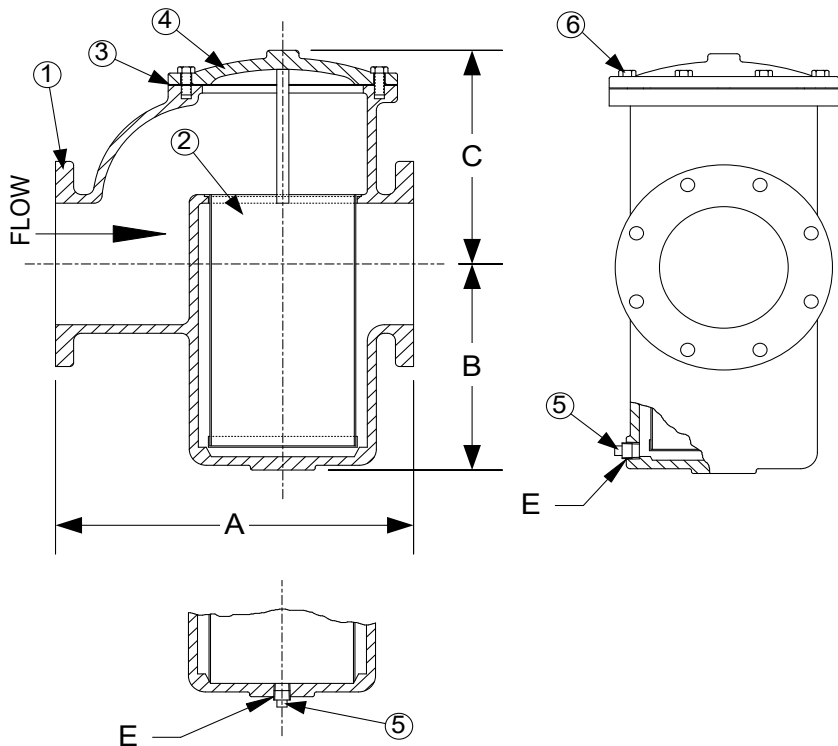


DRAWING NO.
24419-AF



Style DV has a bottom blow off with an open bottom basket.

PARTS LIST		
ITEM	DESCRIPTION	MATERIAL
1	BODY	CAST IRON (ASTM A 126, CLASS B)
2	BASKET	STAINLESS STEEL (304)
3	GASKET	COMPOSITION
4	COVER	CAST IRON (ASTM A 126, CLASS B)
5	PIPE PLUG	MALLEABLE IRON
6	HEX HEAD CAP SCREW	ALLOY STEEL (ASTM A 193, GRADE B7)

Product Number [†]	SIZE	DIMENSIONS (in)				COVER		WEIGHT (lbs)
		A	B	C	E	No of Bolts	Size of Bolts	
21FFS-CI125P34-FB	2	8	3-15/16	5-1/4	1/2	4	1/2-13 x 1	23
21/21FFS-CI125P34-FB	2-1/2	9	4	6	1/2	4	1/2-13 x 1	33
31FFS-CI125P34-FB	3	10	5	7	1/2	4	1/2-13 x 1	45
41FFS-CI125P34-FB	4	13-1/4	6-3/4	9-1/2	1/2	4	3/4-10 x 2	116
51FFS-CI125P34-FB	5	16-7/8	9-7/8	12	3/4	8	5/8-11 x 1-1/2	165
61FFS-CI125P34-FB	6	17	9-7/8	12	3/4	8	5/8-11 x 1-1/2	175
81FFS-CI125P34-FB	8	22-1/4	13-3/4	14	3/4	8	5/8-11 x 1-1/4	345
101FFS-CI125P34-FB	10	26	17	18	3/4	8	1-8 x 3	688
121FFS-CI125P34-FB	12	30-1/4	20-5/8	21	2	12	1-8 x 3-1/2	1135

[†]See "Style D - FLG Product Number Configuration" for additional options.
Dimension and weights are for reference only. When required, request certified drawings.
Face to face values tolerance in compliance with ASME B16.1.

BODY PRESSURE & TEMPERATURE RATINGS - NON SHOCK	
NOM. RATING	2" TO 12"
Class 125	200 PSI @ 150°F
	125 PSI @ 450°F

STANDARD SCREENS SUPPLIED				
SIZE	SCREEN PERFORATION			
	FOR LIQUID	OPEN AREA	FOR STEAM	OPEN AREA
in	in		in	
2 to 4	1/8	43%	1/16	30%
5 to 12	1/8	43%	3/64	33%

Standard screens supplied are for liquid service, unless otherwise specified.
Options: Other perforations, meshes, and screen materials are available.

 3400 CLEVELAND SKOKIE ILLINOIS	DRAWING NO.
	24419-AF
DIMENSIONAL ASSEMBLY	PART NO.
2" to 12" Class 125 FF Flg Style D	SCALE: NTS
	DATE: 01/05/2023
MAT'L: (As Noted Above)	DR. BY DSF
REQ. ---	