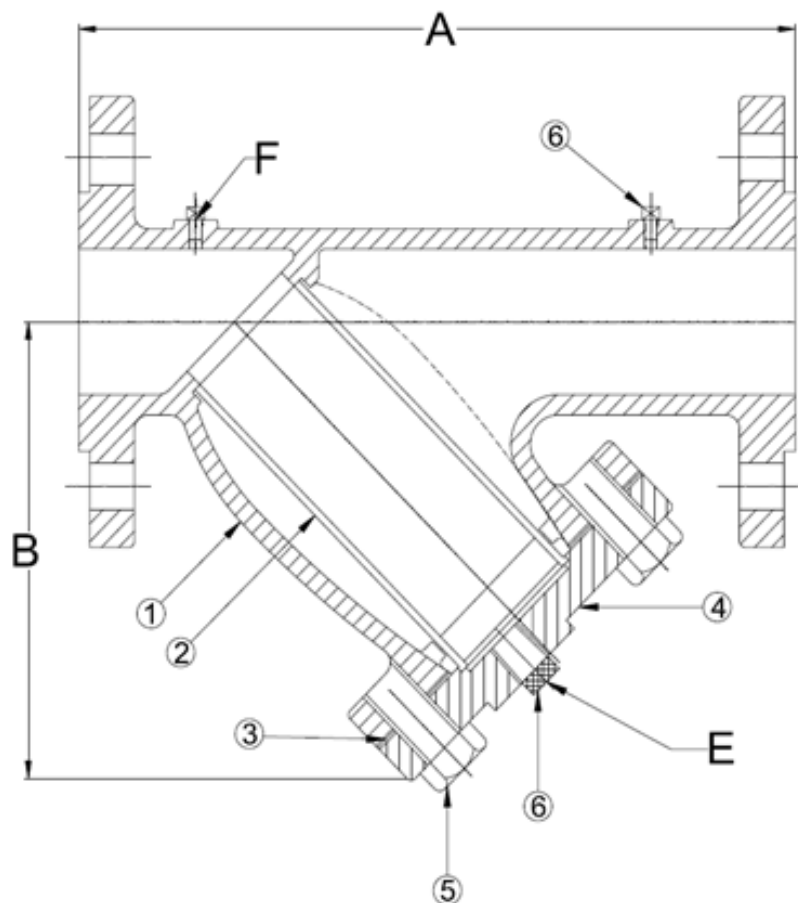


DRAWING NO.
AL 106360



PARTS LIST		
ITEM	DESCRIPTION	MATERIAL
1	BODY	CAST IRON (ASTM A 126, CLASS B)
2	SCEEN	STAINLESS STEEL (304)
3	GASKET*	COMPOSTION
4	COVER	CAST IRON (ASTM A 126, CLASS B)
5	HEX HEAD CAP SCREWS	STEEL
6	PLUG	CARBON STEEL (ASTM A 105)

*An alternative gasket may be required for natural gas, air, and other special applications.
**The wetted surface of this product contacted by consumable water contains less than 0.25% of lead by weight.

Product Number†	SIZE	DIMENSIONS (in)				COVER		WEIGHT (lbs)
		A	B	E	F	No of Bolts	Size of Bolts	
23RFY-CI062P34-FB	2	9-5/16	6-1/4	1/2	1/4	4	5/8-11 x 1-1/2	33
21/23RFY-CI062P34-FB	2-1/2	11-1/16	7-3/4	1	1/4	4	5/8-11 x 1-1/2	49
33RFY-CI062P34-FB	3	2-5/8	8-1/4	1	1/4	4	5/8-11 x 1-1/2	57
43RFY-CI062P34-FB	4	15-5/8	10-1/8	1-1/4	1/4	8	5/8-11 x 1-3/4	106
53RFY-CI125P34-FB	5	18-1/4	12-1/2	1-1/4	1/4	8	3/4-10 x 2	157
63RFY-CI125P34-FB	6	20-3/16	14-3/8	1-1/2	1/4	8	3/4-10 x 2	215
83RFY-CI125P34-FB	8	25-1/8	17-1/2	1-1/2	1/4	8	3/4-10 x 2-1/4	315
103RFY-CI125P34-FB	10	29-1/8	21	2	1/4	12	7/8-9 x 2-1/4	525
123RFY-CI125P34-FB	12	33-3/4	23-5/8	2	1/4	12	7/8-9 x 2-1/2	700
143RFY-CI125P34-FB	14	37-1/4	27-1/8	2	N/A			1400
163RFY-CI125P34-FB	16	42-3/8	29-1/4	2	N/A			1850

†See "Style A7 Product Number Configuration" for additional options.
Dimension and weights are for reference only. When required, request certified drawings.
Face to face values tolerance in compliance with ASME B16.1.

BODY PRESSURE & TEMPERATURE RATINGS - NON SHOCK		
NOM. RATING	2" TO 12"	14" and UP
Class 250	500 PSI @ 150°F	300 PSI @ 150°F
	250 PSI @ 450°F	200 PSI @ 406°F

STANDARD SCREENS SUPPLIED				
SIZE	SCREEN PERFORATION			
	FOR LIQUID	OPEN AREA	FOR STEAM	OPEN AREA
in	in		in	
2 to 4	1/16	30%	3/64	33%
5 to 10	1/8	43%	3/64	33%
12	1/8	43%	1/16	30%
14 & UP	1/8	43%	1/8	43%

Standard screens supplied are for liquid service, unless otherwise specified.
Options: Other perforations, meshes, and screen materials are available.

 3400 CLEVELAND SKOKIE ILLINOIS	DRAWING NO. AL 106360
	PART NO.
DIMENSIONAL ASSEMBLY	SCALE: NTS
2" to 16" Class 250 RF Flg Style A7 (Lead Free)	DATE: 11/04/2022
MAT'L: (As Noted Above)	DR. BY DSF