

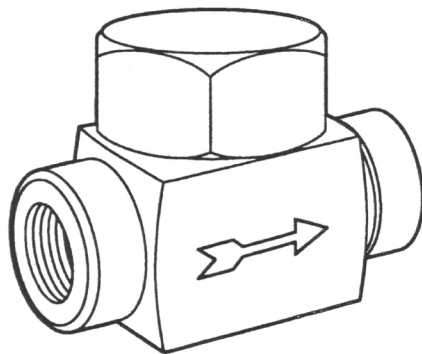


Bell & Gossett
a xylem brand

SUBMITTAL

HS-252A

| | | | |
|--------------------|----------------------|------------------------|--|
| JOB: | | REPRESENTATIVE: | |
| UNIT TAG: | ORDER NO. | DATE: | |
| ENGINEER: | SUBMITTED BY: | DATE: | |
| CONTRACTOR: | APPROVED BY: | DATE: | |



Hoffman Specialty® Series TD6520 Thermodisc Steam Traps

| Ratings | | | | |
|--------------|--|---|--|---|
| Model Number | PMO Max. Operating Pressure psig (bar) | TMO Maximum Operating Temperature °F (°C) | PMA Max. Allowable Pressure psig (bar) | TMA Maximum Allowable Temperature °F (°C) |
| TD6523 | 600 (41.4) | 800 (428) | 600 (41.4) | 800 (428) |
| TD6524 | 600 (41.4) | 800 (428) | 600 (41.4) | 800 (428) |
| TD6526 | 600 (41.4) | 800 (428) | 600 (41.4) | 800 (428) |
| TD6528 | 600 (41.4) | 800 (428) | 600 (41.4) | 800 (428) |

| Materials of Construction | |
|---------------------------|--------------------------------------|
| Part | Specifications |
| Body | 420F Stainless Steel ASTM A743 CA40F |
| Cap | 420 Stainless Steel ASTM A743 CA40 |
| Disc | 420 Stainless Steel ASTM A743 CA40 |

SCHEDULE

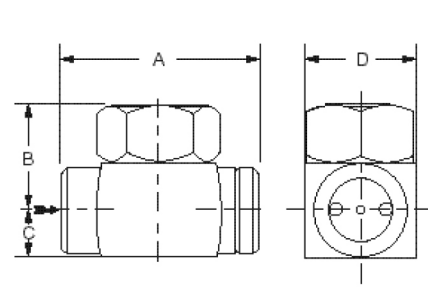
| PART NUMBER | MODEL NUMBER | SIZE NPT INCHES | INLET PRESS. psi (bar) | DIFF. PRESS. psi (bar) | FLOW RATE lb/hr (kg/hr) | TAGGING INFORMATION | QUANTITY |
|-------------|--------------|-----------------|------------------------|------------------------|-------------------------|---------------------|----------|
| 405151 | TD6523 | 3/8 | | | | | |
| 405152 | TD6524 | 1/2 | | | | | |
| 405153 | TD6526 | 3/4 | | | | | |
| 405154 | TD6528 | 1 | | | | | |

Series TD6520 Thermodisc Steam Traps

HS-252(A)

Dimensions, in. (mm)

| Model | NPT Size in. | A | B | C | D | Approx. Weight lbs. (kg) |
|--------|--------------|---------------|-----------------|---------------|---------------|--------------------------|
| TD6523 | 3/8 | 2 (51) | 13/16 (21) | 9/16 (14) | 1-1/2 (38) | 0.8 (0.36) |
| TD6524 | 1/2 | 2-3/4 (70) | 1-3/8 (35) | 5/8 (16) | 1-1/2 (38) | 1.3 (0.59) |
| TD6526 | 3/4 | 2-3/4 (70) | 1-5/8 (41) | 13/16 (21) | 2 (51) | 2.1 (0.95) |
| TD6528 | 1 | 3-1/4 (83) | 1-15/16 (49) | 15/16 (24) | 2 (51) | 3.2 (1.45) |



Capacities lbs./hr (kg/hr). Capacities shown are gross ratings at 10 °F below saturation.

Series TD6520 Thermodisc Trap

| Model Number | NPT Size In. | Pressure Differential in Pounds per Square Inch (bar) | | | | | | | | | | | | | |
|--------------|--------------|---|--------------|--------------|--------------|---------------|---------------|---------------|---------------|----------------|----------------|----------------|----------------|----------------|----------------|
| | | 2 (0.14) | 5 (0.35) | 10 (0.69) | 25 (1.7) | 50 (3.5) | 75 (5.2) | 100 (6.9) | 150 (10.4) | 200 (13.8) | 250 (17.3) | 300 (20.7) | 400 (27.6) | 500 (34.5) | 600 (41.4) |
| TD6523 | 3/8 | 180 (82) | 185 (84) | 190 (86) | 210 (95) | 255 (116) | 315 (143) | 375 (170) | 500 (227) | 610 (277) | 700 (318) | 790 (358) | 955 (433) | 1105 (501) | 1250 (567) |
| TD6524 | 1/2 | 290 (132) | 310 (141) | 345 (156) | 440 (200) | 580 (263) | 710 (322) | 810 (367) | 995 (451) | 1140 (517) | 1275 (578) | 1405 (637) | 1630 (739) | 1825 (828) | 2000 (907) |
| TD6526 | 3/4 | 395 (179) | 420 (191) | 465 (211) | 600 (272) | 815 (370) | 1000 (454) | 1160 (526) | 1440 (653) | 1675 (760) | 1895 (860) | 2095 (950) | 2430 (1102) | 2750 (1247) | 3050 (1383) |
| TD6528 | 1 | 620 (201) | 660 (299) | 730 (331) | 920 (417) | 1215 (551) | 1490 (676) | 1740 (789) | 2195 (996) | 2585 (1173) | 2910 (1320) | 3230 (1465) | 3770 (1710) | 4245 (1926) | 4700 (2132) |

xylem
Let's Solve Water

Xylem Inc.
8200 N. Austin Avenue
Morton Grove, Illinois 60053
Phone: (847) 966-3700
Fax: (847) 965-8379
www.bellgossett.com

Bell & Gossett is a trademark of Xylem Inc. or one of its subsidiaries.
© 2013 Xylem Inc. HS-252A May 2013