



CUSTOMIZABLE 22" COMMERCIAL-GRADE LCD TOUCH SCREEN MONITOR

SKU MM-22T-1080

AV DISPLAY, 1080P, 12V DC OR POE POWER



KEY FEATURES

FLEXIBLE DISPLAY SOLUTIONS

Designed for low-voltage installers to create tailored setups for various applications.

DUAL POWER OPTIONS

Choose between 12V DC or POE for versatile installation needs.

SPACIOUS INTERNAL STORAGE

Spacious compartment with DIN rails and mounting holes for securely mounting accessories.

VERSATILE TOUCH SCREEN

10-point PCAP multi-touch compatible with Windows, Linux, Android, macOS, and more. USB connection supports internal or external installation.

INTERNAL HDMI CONNECTIVITY

Integrated HDMI cable eliminates exposed wires for a clean setup.

INTEGRATED POWER OUTPUTS

12V DC and POE passthrough for powering internal/external devices.

EXTENDED CONNECTIVITY

Ethernet and USB extension cables for external monitor access

SECURE & VERSATILE CONTROLS

Tamper-proof buttons, optional remote, IR receiver.

CLEAR AUDIO

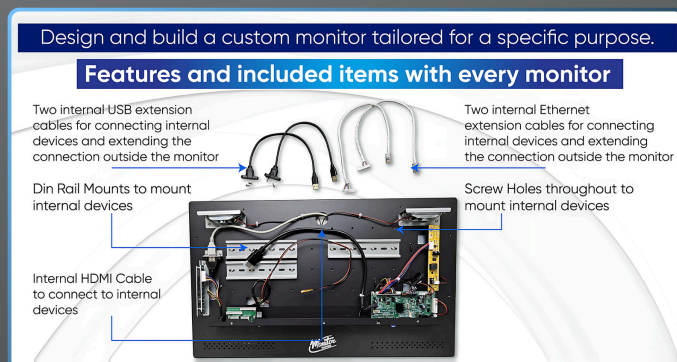
Dual 5W built-in speakers for high-quality sound.

HIGH-DEFINITION DISPLAY

22" Full HD 1080p at 60Hz with multiple HDMI, VGA, USB power, and an audio input jack.

DURABLE, COMMERCIAL-GRADE BUILD

Heavy-duty metal, 24/7/365 operation, NDAA compliant, 3-year warranty.



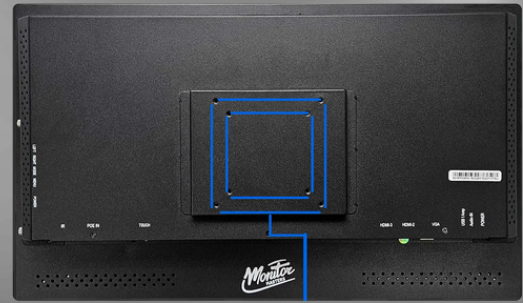
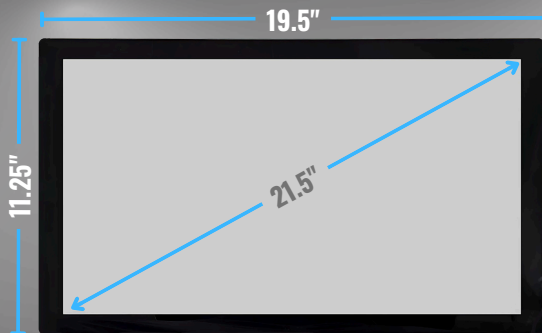


CUSTOMIZABLE 22" COMMERCIAL GRADE LCD TOUCH SCREEN MONITOR

AV DISPLAY, 1080P, 12V DC OR POE POWER

SKU MM-22T-1080

SPECIFICATION



75x75/ 100x100
Vesa mount pattern

Resolution	1920 × 1080
Refresh Rate (Hz)	60Hz
Brightness (Nits)	300
Contrast Ratio	1000:01:00
Viewing Angle	178/178
Display Mode	16:09
Speakers	YES
VESA Mount	75x75/ 100x100
Storage temperature	-22-185°F
Working temperature	14-140°F
Weight	11.5 lbs.

ADDITIONAL CONNECTIONS



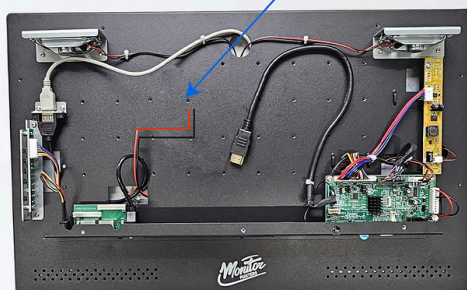
Audio Jack Input (Only used when VGA Input is selected)	1
Internal HDMI Inputs	1
External HDMI Inputs	2
VGA Inputs	1
USB Power Outputs (1 Amp)	1

POWER SPEC

Maximum Wattage Consumption = 25 Watts

When powering with 12V DC		When powering with POE	
Required Power Adapter	Model Number: MM-12V-8AMP 12V DC 8 Amp Adapter	Required POE Module	MM-PS90-BT1
Remaining 12V DC Power Available at Internal Power leads to power accessories	5.9 Amps (71 watts)	Required POE Power Type	Type 4 IEEE802.3bt 90 Watt POE
		Suggested POE Injector	MM-INJECTOR-BT90
		Remaining Power Available to be shared between POE output and 12V DC Outputs to power accessories	47 Watts

12V DC Power Leads available to power internal devices

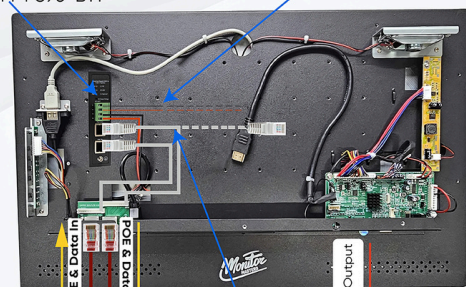


POWERED BY 12V DC

12V Adapter
(sold separately)
MM-12V8A

POE Monitor Module
(sold separately)
MM-PS90-BT1

12V Power Available to power internal devices



POE Output can either be used internally for internal devices or routed to the ethernet port on the bottom of the monitor to be used with external devices. Works on non-POE Devices as well



POWERED BY POE

POE Injector (Sold Separately)
MM-INJECTOR-BT90



CUSTOMIZABLE 22" COMMERCIAL GRADE LCD TOUCH SCREEN MONITOR

AV DISPLAY, 1080P, 12V DC OR POE POWER

SKU MM-22T-1080



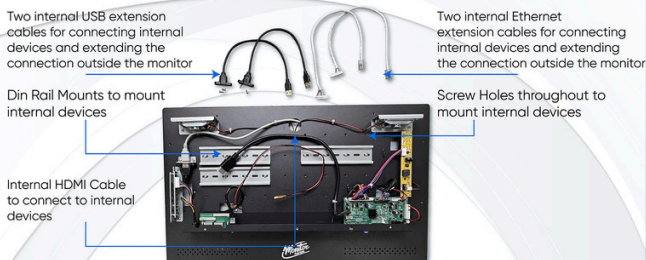
Tamper Proof Monitor Control Cover

IR Receiver Plug In

Choose whether you want the monitor to utilize the **IR Remote Control** by plugging in the peel and stick IR Receiver. Stick the receiver anywhere you want on the monitor.

Design and build a custom monitor tailored for a specific purpose.

Features and included items with every monitor



Lets take a look at just a few of the unique creations that were made using a Monitor Master's Monitor



ACCESSORIES THAT COME INCLUDED WITH EACH MONITOR



Copyright © 2025 Monitor MASTERS

All Rights reserved.

Monitor MASTERS and their respective logos, specifications, corporate Identity and product Identity, as used herein, are trademarks of Monitor MASTERS and may not be used without permission.

[Contact us](#)

sales@ipcampower.com