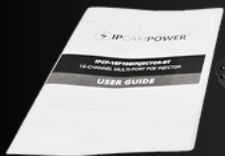




FRONT SIDE (POE INJECTOR HUB)



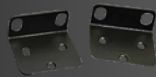
BACK SIDE (POWER ON/OFF - POWER IN)



USER GUIDE



AC CORD



RACK EARS



RUBBER FEET

Pair With Your Favorite Switch

MULTI-PORT POE INJECTION

Ample Bandwidth Pass-Through

SUPPORTS UP TO 10G SPEEDS

Efficiently powers devices

90W PER PORT, 450W BUDGET



IPCamPower 16 Port 802.3bt POE++ Extreme Power POE Injector Hub

90 Watts on Each Port, 450 Total Watts Budget,
10G 10/100/1000/10000 Speeds Each Port

Product Features

UNPARALLELED POWER DELIVERY

One of the Most powerful multi-port POE injectors on the market in terms of both speed and Power. Harness the exceptional capacity of up to 90 watts of 802.3bt POE power per port with a substantial total budget of 450 watts, adept for powering diverse devices, from POE lighting, PTZ cameras, Access Control, and AV over IP devices, ensuring steadfast performance in the most power hungry setups.

INNOVATIVE DUAL-ROW 16 PORT INJECTOR DESIGN

Transform your standard non-POE switches into potent power over Ethernet hubs with our distinctive dual-row configuration. Initiate the process by connecting to the upper row from your selected non-POE switch. This setup seamlessly facilitates the transmission of ultra-fast data to the lower row, which ingeniously injects robust, high-efficiency POE into your crucial devices, consolidating data and power delivery into a streamlined solution.

INTELLIGENT POWER ALLOCATION

Empower your network with a device that's as versatile as it is powerful. Whether for high-demand POE devices or more delicate equipment like smaller IP cameras and phones, this injector intelligently discerns and distributes the exact amount of energy required. Advanced 802.3bt technology ensures seamless backward compatibility with 802.3af and 802.3at devices. This precision safeguards your devices from getting over powered.

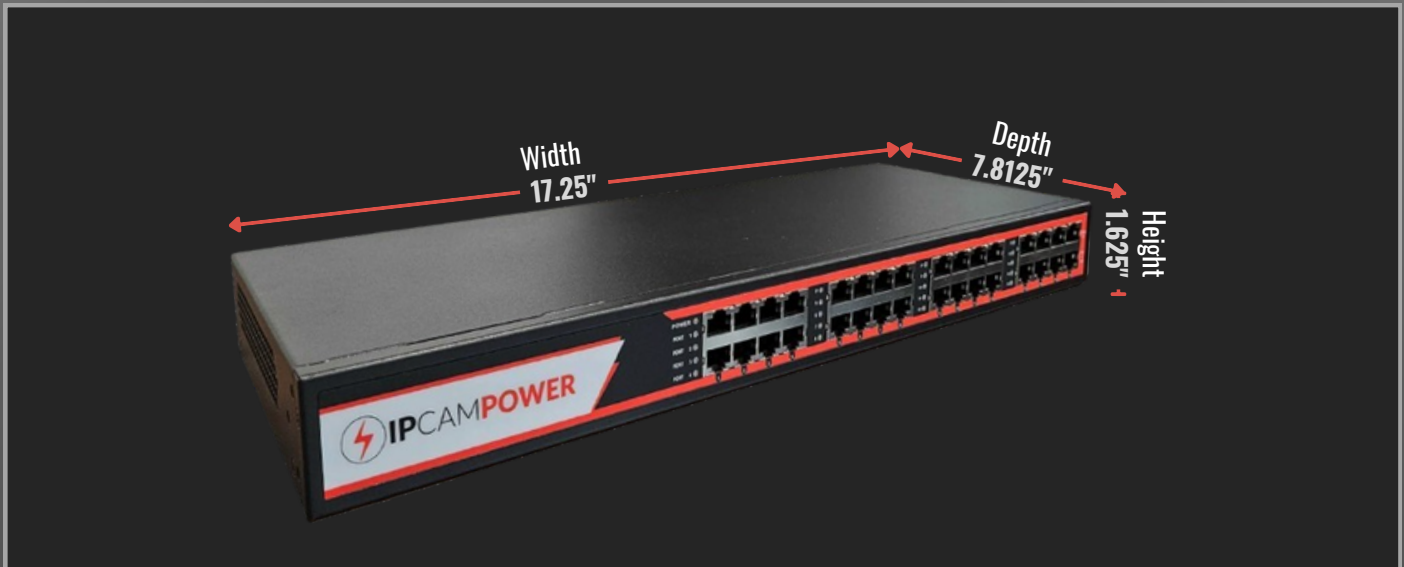
ULTRA-FAST 10G SPEEDS

Elevate your network with blazing-fast 10G data pass-through, ideal for POE-powered A/V equipment like SDVoE, ensuring smooth, high-quality performance for professional AV over IP applications. More than capable enough to handle all other standard type of POE equipment like IP Cameras, IP Phones, and POE Lighting.

VERSATILE COMPATIBILITY

Designed for a wide range of POE devices such as IP Cameras, POE Lighting, and IP Phones, this injector doesn't just power them; it provides ample bandwidth, robust construction, and backward compatibility, enhancing your network's overall efficiency.

PRODUCT DIMENSIONS



SPECIFICATION DATA

Interfaces	16 x RJ-45 10G Rated Ethernet Input Connector for Data 16 X RJ-45 10G Rated Ethernet Output Connector for Data + POE
Supported Ethernet Speeds	1G/2.5G/5G/10G Base-T Applications
Power Input	100-240VAC, 50/60Hz
Output Voltage	54 DC (Built In AC/DC Power Supply, No External Power Brick Needed)
Supported POE Standards	IEEE802.3af, IEEE802.3at, IEEE802.3bt (type3), IEEE802.3bt (type4)
POE Power Capability Per Port	90 Watts
Total POE Power Budget	450 Watts
Power POE Pin Assignment	Mode A: V+ (RJ45 Pin3,6), V- (RJ45 Pin 1,2) Mode B : V+ (RJ45 Pin4,5), V- (RJ45 Pin 7,8)
LED Indicators	Power Input and PoE Output
Dimensions	Size: 17.25" W x 7.8125" Deep x 1.625" High
Weight	7.5 Lbs.
Rack Unit Size	1U (Rack Ears Included)
Operating Humidity	5-95% Noncondensing
Operating Temperature	32-104 Degrees Fahrenheit
Storage Temperature	14-158 Degrees Fahrenheit
Warranty	1 Year
Compliances	NDAA Compliant, FCC (Part 15, Class B), IEEE802.3af/at/bt

CONNECTION DIAGRAM

