

grövpure *sequoia*
USER MANUAL

IMPORTANT SAFETY INSTRUCTIONS

WARNING:

TO REDUCE THE RISK OF FIRE, ELECTRIC SHOCK OR INJURY:

- Use indoors only.
- Do not use for any purpose other than described in this user guide.
- Use only manufacturer's recommended accessories.
- Do not use with damaged cord or plug.
- Never put anything on top of the appliance.
- If appliance is not working as it should, or has been dropped, damaged, left outdoors, or dropped into water, have it repaired at an authorized service center.
- Do not move or carry by cord, use cord as a handle, close a door on cord, or pull cord around sharp corners. Keep cord away from heated surfaces.
- Do not run cord under carpeting.
- Do not cover cord with throw rugs, runners or similar coverings. Do not route cord under furniture or appliances.
- Arrange cord away from traffic areas so it will not be tripped over.
- Do not unplug by pulling cord. To unplug, grasp the plug, not the cord.
- Do not handle plug or appliance with wet hands.
- This model is for household use only. Plastic film can be dangerous. To avoid danger of suffocation, keep away from children. Do not plug in your air purifier until you are familiar with all instructions and operating procedures. To reduce the risk of electrical shock, turn power switch off and disconnect polarized plug from electrical outlet BEFORE performing maintenance or troubleshooting checks.
- Do not put any object into openings. Do not use with any opening blocked; keep openings free of dust, lint, hair and anything that may reduce airflow.
- Keep hair, loose clothing and fingers away from openings. Turn OFF device controls before unplugging the appliance. Do not use appliance in an enclosed space filled with vapors given off by oil-based paint, paint thinner, moth-proofing substances, flammable dust or other explosive or toxic vapors.
- Keep appliance on a level surface. Do not immerse the unit in waters or other liquids, do not pour liquids into or around the unit or openings. Do not use the appliance near water or in a damp or wet location.
- This appliance has a polarized plug (one blade is wider than the other). To reduce the risk of electric shock, this plug is intended to fit in a polarized outlet only one way. If the plug does not fit fully in the outlet, reverse the plug.
- If it still does not fit, contact a qualified electrician. Do not attempt to defeat this safety feature.
- Do not use the appliance with any dimmer switch or solid state speed control device.
- Only clean appliance with a clean, dry cloth. Do not use water or other liquid cleaning products on the appliance; these items pose a fire, electrical shock, or injury risk.

**READ AND SAVE
THESE INSTRUCTIONS**

1.

getting those most from your Sequoia

give it room to breathe

The Sequoia pulls air in from both the front and the back, so placing it away from any walls will help to maximize airflow. It's designed to remove inanimate particulate matter down to 0.1 microns in large, multi-purpose rooms like offices, classrooms, conference rooms, and open floor plan living rooms.

run it all the time

The Sequoia's automatic mode circulates the air quietly and efficiently and will increase speed if it detects any inanimate particulate matter in the environment. No need to ever turn it off, just set it on auto and enjoy cleaner air.

keep it well-oiled

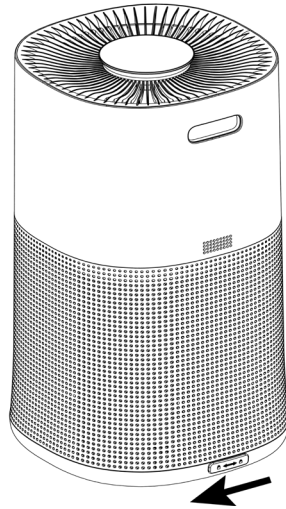
Figuratively speaking, of course. The Sequoia requires no maintenance other than a dry wipe down the exterior, a wipe down of the outside of the filter, and regular filter changes every six months. There is a handy light on the top of the machine that will let you know when it is time to clean the exterior of the filter. Be warned: the interior of the filter cannot be washed or cleaned and must be replaced when dirty. Depending on your environment, expect to replace the filter every 4-6 months.

2.

setting it up / changing the filter

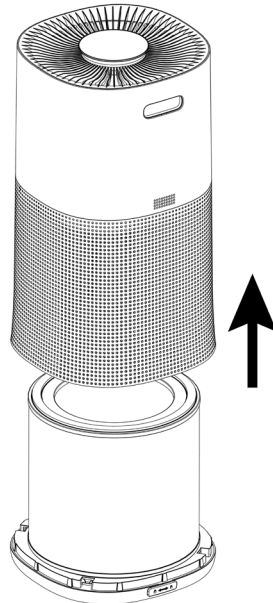
step 1:

Unlock the housing using the switch on the base of the Sequoia.



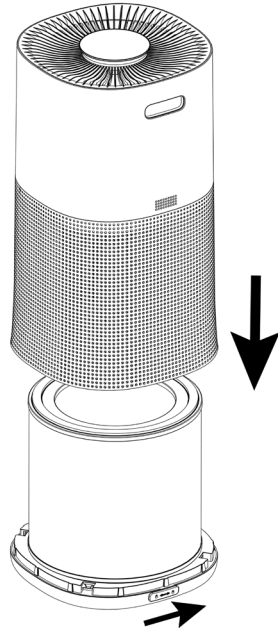
step 2:

Lift the housing up and over the filter and remove the plastic bag from the filter.



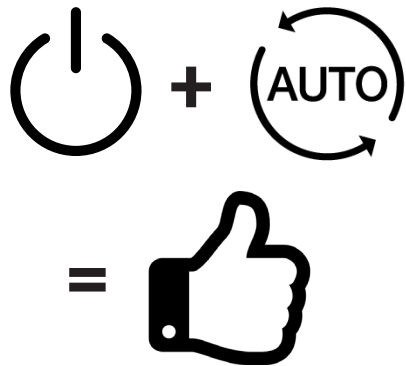
step 3:

Replace the filter with the open side up and reinstall the housing by lifting it up and over the filter. Lock the housing using the switch on the base.



step 4:

Press the power button, the auto button to engage automatic mode, and enjoy clean, fresh air.



3.

operation



fan speed control

press to cycle through fan speeds 1-4



sleep mode

press to turn on or turn off sleep mode.

The sleep icon will flash for 5 seconds before the unit enters into sleep mode.

Under sleep mode, all lights (except sleep indicator) will turn off and fan will turn at sleep speed. Press sleep button again or any button to quit sleep mode



dimmer

press to adjust the brightness of the unit



child lock

long press this button for 5 seconds to enter or exit the child lock mode



filter reset

press to check the remaining life (%) of the filter. After 6 months of operation this indicator will turn on, alerting you to check the filter to see if it needs replacement. Press and hold this button for 5 seconds to reset the indicator light

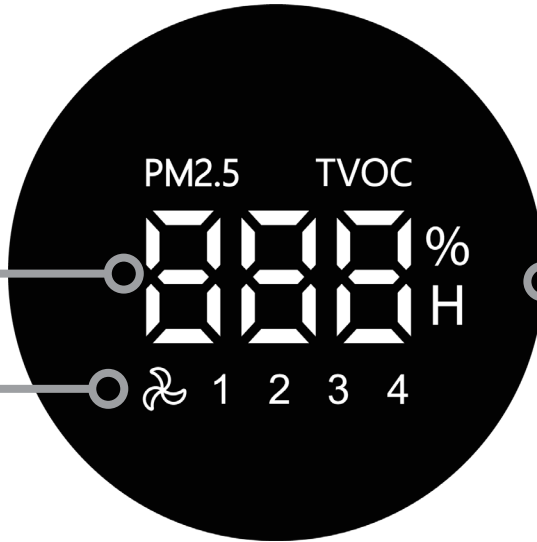


timer

press to to set an operating time of between 1 and 12 hours

air quality indicator

displays current air quality in the room, giving a number from 0-999. PM2.5 is the reading from the particulate sensor, and TVOC is the reading from the Volatile Organic Compound sensor



air quality indicator ring

illuminates green, yellow, or red to demonstrate current air quality


fan speed indicator

displays the current fan speed

automatic mode

Automatic mode is the principal operating mode of the Sequoia, and is the setting you should use to get the most out of your machine.

When in automatic mode, the Sequoia will adjust the fan speed to provide the most efficient air cleaning possible. The Sequoia will gently recirculate the room's air at whatever minimum fan speed you select. When the laser particulate sensor or volatile organic compound sensor detects the presence of inanimate particulate matter or odors, the fan speed will increase to maximum to clean the air as quickly as possible. After the particulate matter is no longer detected, the machine will return to its previous speed and continue to circulate air.

To engage automatic mode, simply press the  button. To disengage, press it again.

air quality indicator

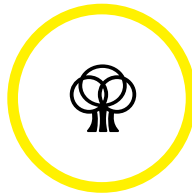
The Sequoia utilizes its two sensors to display the current air quality in the room via the numerical display and colored ring on the front. The laser particulate sensor detects inanimate particles in the 1 μm , 2.5 μm , and 10 μm range. The numerical display alternates between the 2.5 μm particulate reading (PM2.5) and the volatile organic compound (VOC) sensor reading.

When either sensor detects inanimate particulate matter or odors, the ring will change color to indicate the quality of the air. If the Sequoia is in automatic mode, the fan speed will increase to clean the air as quickly as possible. As soon as the inanimate particles are reduced, the speed will decrease back to the minimum.



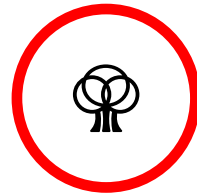
excellent

$< 50\mu\text{g}/\text{m}^3$



poor

$50-99\mu\text{g}/\text{m}^3$



very poor

$> 100\mu\text{g}/\text{m}^3$

5.

troubleshooting

problem: the Sequoia doesn't work.

- ✓ Make sure the Sequoia is plugged in.
- ✓ Make sure the power outlet is working.
- ✓ Make sure the Sequoia is turned on.
- ✓ Make sure the rear lock is engaged.
- ✓ If plugged into a surge protector, make sure it is on.

problem: the Sequoia has poor air flow or is loud.

- ✓ Make sure your Sequoia is on a flat surface.
- ✓ Make sure nothing is blocking the air inlets.
- ✓ Check the condition of the filter and replace if dirty.
- ✓ Make sure the plastic bag was removed from the filter.
- ✓ Make sure the opening to the filter is up and it is installed correctly.

problem: the Sequoia's filter doesn't last six months

- ✓ Excessive amounts of pet dander, dust, or smoke may decrease the life expectancy of the filter.

problem: my filter indicator is illuminated

- ✓ When the filter indicator is illuminated, clean the exterior or replace the filter with a new one and hold down the indicator button for 5 seconds to reset the indicator.

6.

specifications

clean air delivery rate 400 cfm (smoke)

airflow 395 cfm

noise level 26 - 55 dba

dimensions 12.9" x 13" x 23.6"

weight 16.5 lbs

power input 120V AC

operating temperature 40-110°F (4-43°C)

sensors PM 1, 2.5, and 10 µm laser sensor
Volatile Organic Compound sensor

filter H13 HEPA filter
Activated charcoal filter
Polypropelene pre-filter

warranty

Grovpure warrants that for a period of one year from shipment, your Grovpure Sequoia unit (the “Product”) will be free from defects in materials and workmanship under normal use in accordance with the documentation provided with the Product. In the event of a defect, visit Grovpure at grovpure.com/contact for return instructions.

Grovpure’s policy is to honor product warranties only on products purchased directly from Grovpure or from authorized Grovpure resellers, and only if accompanied by a receipt or proof of purchase. A list of Grovpure’s authorized resellers is available on Grovpure’s website. If you purchase a Grovpure product from an unauthorized dealer, your Grovpure product warranty will be deemed invalid. Shipping charges may apply except where prohibited by applicable law.

Limited warranty information

Grovpure’s sole obligation under this warranty will be at its option to repair or replace the Product and the replaced Product will be warranted for the remaining period of the original warranty. Replacement Products may contain new or refurbished parts. This warranty does not apply to Products damaged by misuse, accident, electrical disturbance or normal wear and tear. The Product is not designed for or warranted against damage from use in areas subject to extreme temperature, excessive moisture, or other inherently hazardous environments, or use of unauthorized filters or other components.

ALL IMPLIED WARRANTIES OF MERCHANTABILITY OR FITNESS FOR A PARTICULAR PURPOSE ARE LIMITED TO THE DURATION OF THIS WARRANTY. EXCEPT FOR THE LIMITED EXPRESS WARRANTIES SET FORTH ABOVE, GROVPURE DISCLAIMS ALL OTHER EXPRESS OR IMPLIED WARRANTIES OR CONDITIONS.

Some jurisdictions do not allow limitations on how long an implied warranty lasts, so the above limitations may not apply to you. This warranty gives you specific legal rights, and you may also have other rights which vary by jurisdiction.

legal notices

FCC statement:

This device complies with part 15 of the FCC Rules. Operation is subject to the following two conditions:

(1) This device may not cause harmful interference, and (2) this device must accept any interference received, including interference that may cause undesired operation.

Changes or modifications not expressly approved by the party responsible for compliance could void the user's authority to operate the equipment.

Note: This equipment has been tested and found to comply with the limits for a Class B digital device, pursuant to part 15 of the FCC Rules. These limits are designed to provide reasonable protection against harmful interference in a residential installation.

This equipment generates, uses and can radiate radio frequency energy and, if not installed and used in accordance with the instructions, may cause harmful interference to radio communications. However, there is no guarantee that interference will not occur in a particular installation. If this equipment does cause harmful interference to radio or television reception, which can be determined by turning the equipment off and on, the user is encouraged to try to correct the interference by one or more of the following measures:

- Reorient or relocate the receiving antenna.
- Increase the separation between the equipment and receiver.
- Connect the equipment into an outlet on a circuit different from that to which the receiver is connected.
- Consult the dealer or an experienced radio/TV technician for help.

CAN ICES-3(B)/NMB-3(B)

