

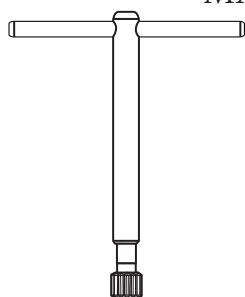
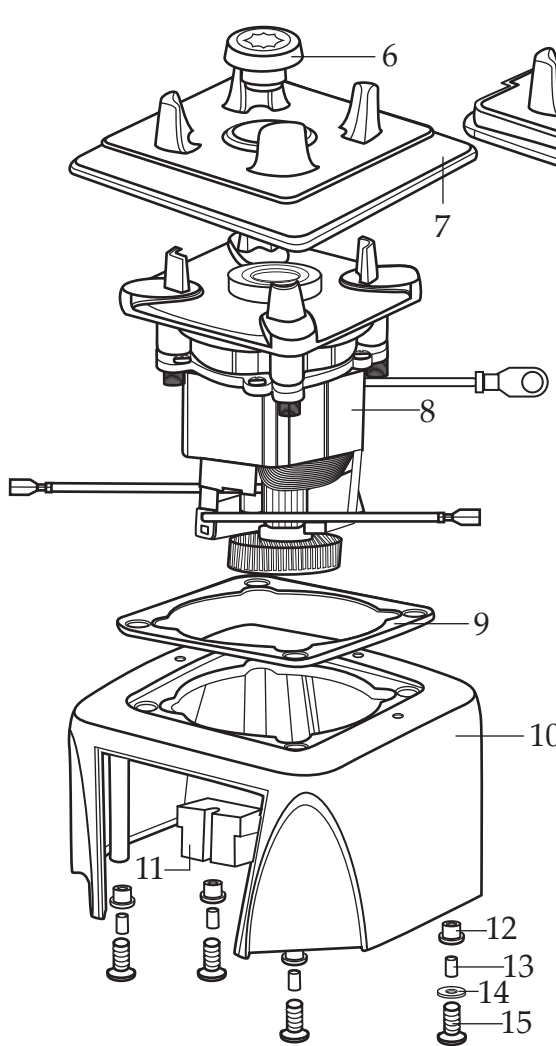
**WARING**  
**COMMERCIAL**

**MX1300XT / MX1500XT**  
64 oz. BPA-Free copolyester container

**MX1300XTP / MX1500XTP**  
32-48 oz. BPA-Free copolyester container

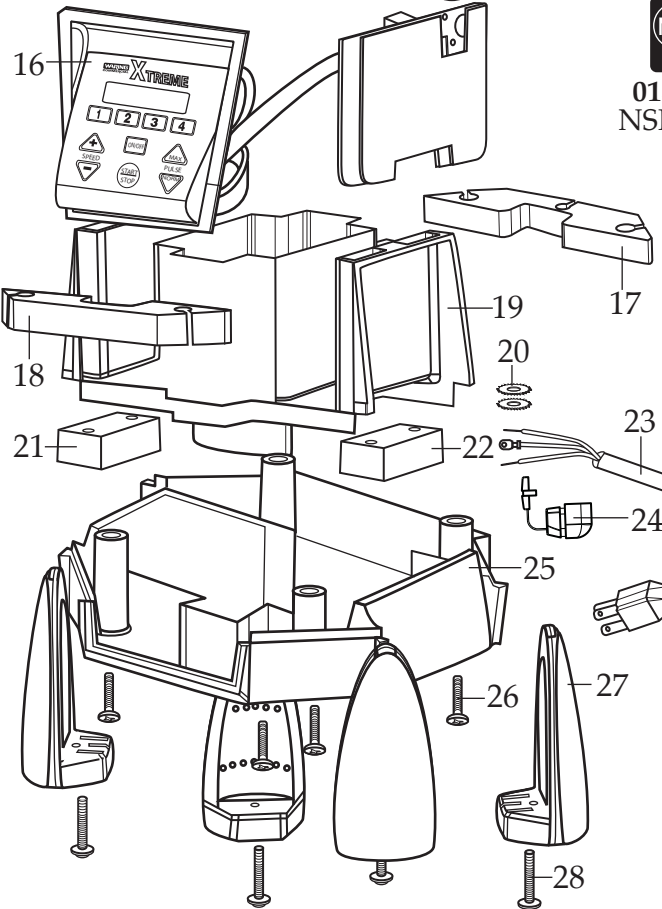
**MX1300XTS / MX1500XTS**  
64 oz. stainless steel container

**MX1300XTWT**  
32-48 oz. BPA-Free copolyester container / Woody's  
*MX1500XT units come with Sound Enclosure*

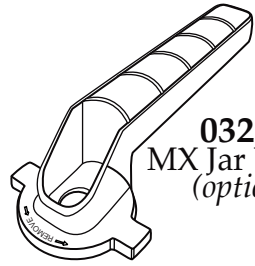
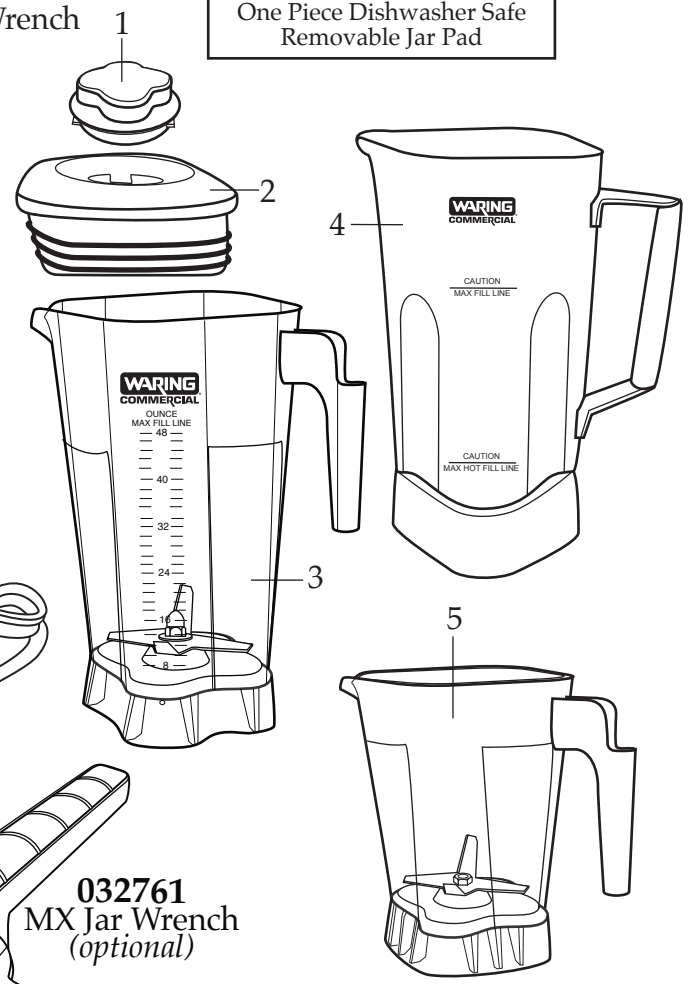


**503351**  
MX Coupling Wrench  
*(optional)*

Unit Information	
Limited 3 Year Motor Warranty	
Two Year Parts & Labor	
60Hz - 13 Amps - 3.5 HP Motor	
RPM's	Maximum 30,000
	Minimum 5,000
Height 21" - Weight 18 lbs.	
Four Reprogrammable	
One Touch Blending Stations	
One Piece Dishwasher Safe	
Removable Jar Pad	



**013304**  
NSF Seal



**032761**  
MX Jar Wrench  
*(optional)*

**Catalog**

MX1300XT  
 MX1500XT  
 MX1300XTP  
 MX1500XTP  
 MX1300XTS  
 MX1500XTS  
 MX1300XTWT

**Model**

MX1300XT11  
 MX1500XT12  
 MX1300XTP  
 MX1500XT22  
 MX1300XT31  
 MX1500XTS  
 MX1300XTP



<b>Illustration #</b>	<b>Part #</b>	<b>Description</b>
1	026425-E	Jar Lid Cover
2	026424-V	Jar Lid
3	503398	Jar with Blending Assembly (64 oz. Eastman)
4	503346	Jar with Blending Assembly (64 oz. stainless steel)
5	503348	Jar with Blending Assembly (32-48 oz. Eastman)
6	028538	Drive Clutch
7	026442	Jar Pad
7a	026443	Jar Pad (use with sound enclosure)
8	028101	Motor
9	026437	Dampening Plate Gasket
10	028032-09	Top Housing (black)
11	028541	Motor Foam (2 Required)
12	026439	Dampening Plate Bushing (2 Required)
13	026453	Dampening Plate Sleeve (4 Required)
14	026459	Washer
15	028929	Screw (4 Required)
	026455	Screw (4 Required <i>older units</i> )
	026459	Washer (4 Required <i>older units</i> )
16	029812	Soft Start Control Panel
17	028248	Housing Foam Rear Baffle
18	028249	Housing Foam Front Baffle
19	028240	Motor Housing
20	002943	Washer (2 Required)
21	028247	Bottom Housing Foam Baffle
22	028542	Foam Baffle
23	026925	Cord Set
24	007556	Strain Relief
25	028241-09-x	Bottom Housing (black)
26	012505	Screw (4 Required)
27	026430	Corner Post (4 Required)

**Catalog**

MX1300XT  
 MX1500XT  
 MX1300XTP  
 MX1500XTP  
 MX1300XTS  
 MX1500XTS  
 MX1300XTWT

**Model**

MX1300XT11  
 MX1500XT12  
 MX1300XTP  
 MX1500XT22  
 MX1300XT31  
 MX1500XTS  
 MX1300XTP

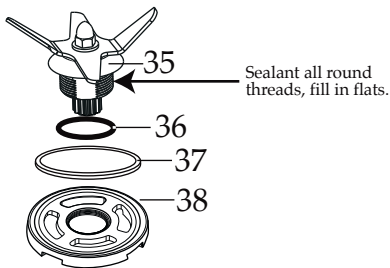
**Waring Factory Service Center**  
 314 Ella T. Grasso Ave.  
 Torrington, CT 06790  
 Tele. 1-800-269-6640  
 Fax 860-496-9017  
 www.waringcommercialproducts.com

Illustration #	Part #	Description
28	028928 026459 012505	Screw (4 Required) Washer (4 Required <i>older units</i> ) Screw (4 Required <i>older units</i> )
29	028250-E 026432-E	32 oz. Inner Enclosure 64 oz. Inner Enclosure
30	028251-E 026433-E	32 oz. Outer Enclosure 64 oz. Outer Enclosure
31	027447	O Ring (2 Required)
32	026461	Screw (3 Required)
33	026434	Sound Enclosure Handle
34	012505	Screw (2 Required)
35	503345	Blade Assembly
36	024271	O Ring
37	024268	Nut Gasket
38	029631	Bearing Holder Nut
39	026423-E	64 oz. Eastman Container
40	503308	32-48 oz. Eastman Container

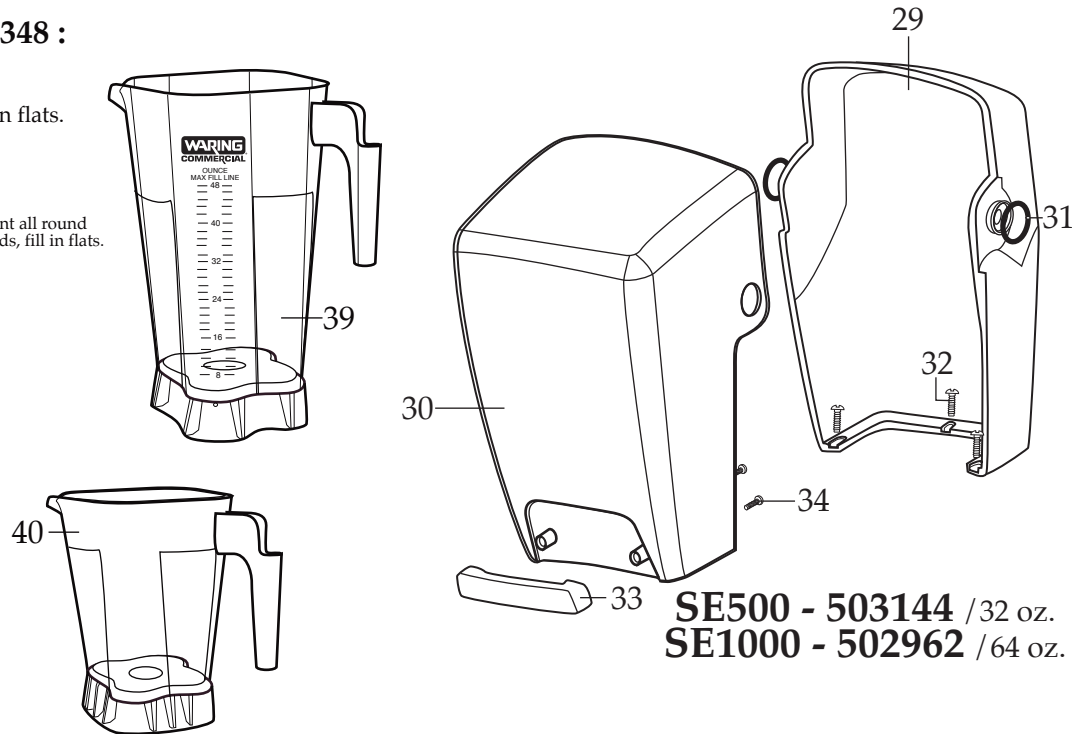
**Notes for 503398 & 503348 :**

Torque 100-125 in./lbs

Sealant all around the threads, fill in flats.  
 Dow Corning Sealant RTV 733



**031060**  
 Blending Assy. Kit



**SE500 - 503144** / 32 oz.  
**SE1000 - 502962** / 64 oz.

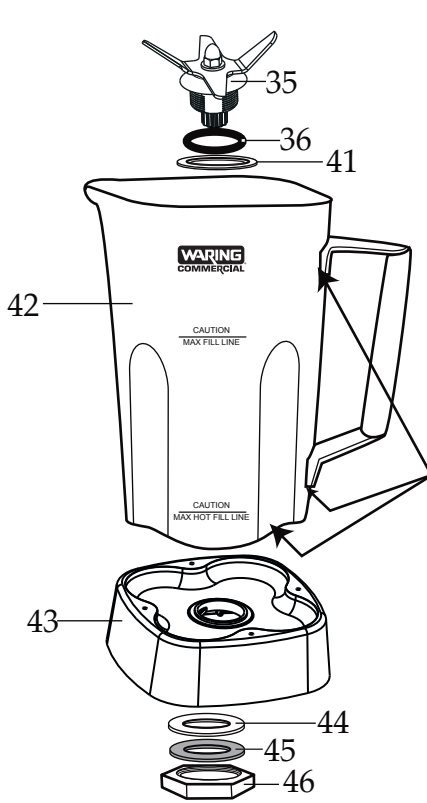
**Catalog**

**Model**

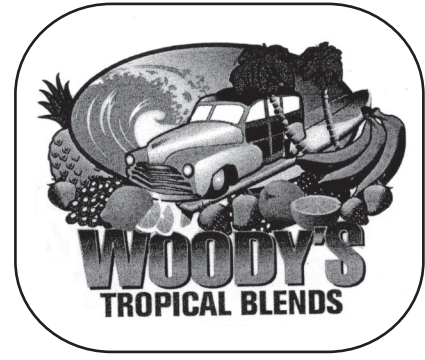
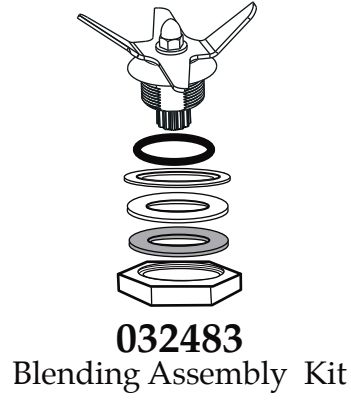
MX1300XT	MX1300XT11
MX1500XT	MX1500XT12
MX1300XTP	MX1300XTP
MX1500XTP	MX1500XT22
MX1300XTS	MX1300XT31
MX1500XTS	MX1500XTS
MX1300XTWT	MX1300XTP

Waring Factory Service Center  
 314 Ella T. Grasso Ave.  
 Torrington, CT 06790  
 Tele. 1-800-269-6640  
 Fax 860-496-9017  
 www.waringcommercialproducts.com

Illustration #	Part #	Description
41	026798	Support Washer
42	026648	64 oz. Stainless Steel Container
43	026649	Container Support
44	026797	Bearing Holder Gasket
45	026796	Bearing Holder Washer
46	026795	Stainless Steel Jar Bearing Holder Nut



Sealant applied all round these indicated areas.



028595  
 Woody Label/MX1300XTWT

**503346 - Stainless Steel Container**

**Notes for 503346 :**

- Torque 100-125 in/lbs
- Sealant applied all around indicated areas.  
Dow Corning Sealant RTV 733
- Lubricant applied to O Ring  
Dow Corning 200 (R) Fluid

