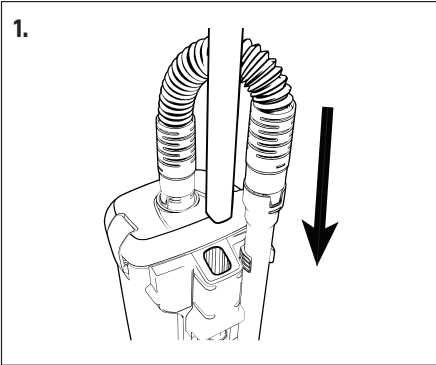
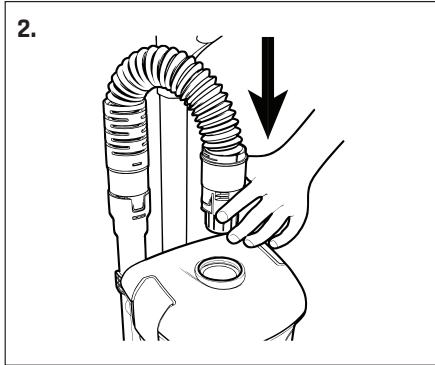




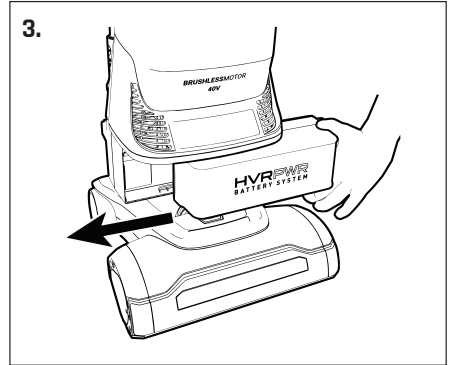
GETTING STARTED



1. Insert the handle and secure it with the provided bolt.



2. Attach hose to the bag cover by securing it inside the opening.

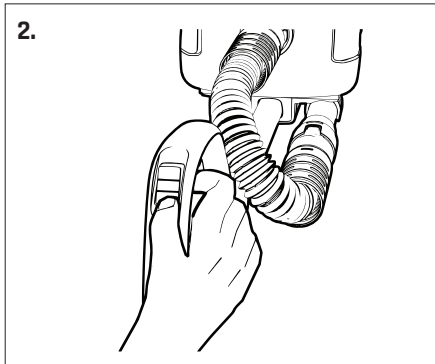


3. Slide fully charged battery into the battery slot so that it locks in place.

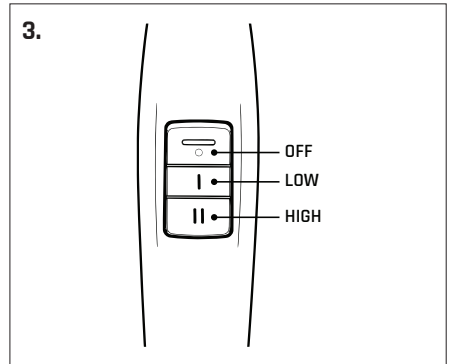
HOW TO USE



1. Place a foot where the foot icon is on the nozzle, then pull the handle back to recline.

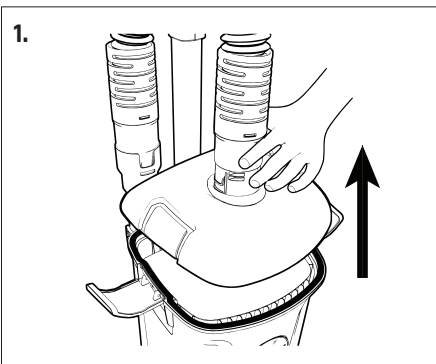


2. Push the switch to turn on unit.

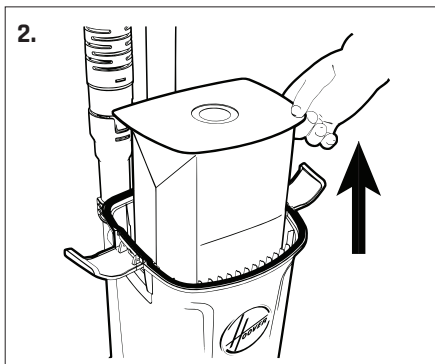


3. Push switch to Mode I for low. Mode II for high. Push back to 0 for off.

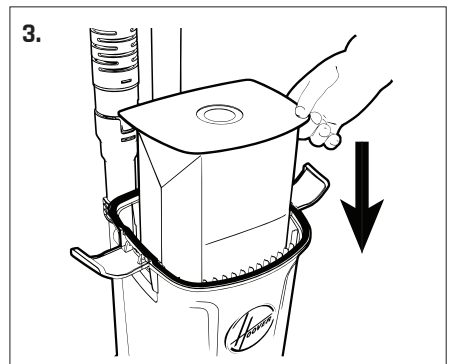
HOW TO REPLACE BAG



1. Remove lid to access bag.



2. Remove old bag.



3. Insert new bag.

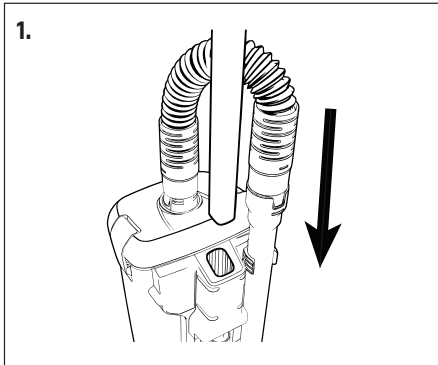


COMMERCIAL

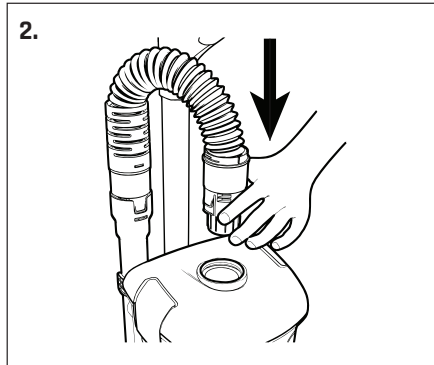
CH90600V & CH91600V HVRPWR 40V BRUSHLESS UPRIGHT

GUIDE DE DÉMARRAGE RAPIDE
GUÍA DE INICIO RÁPIDO

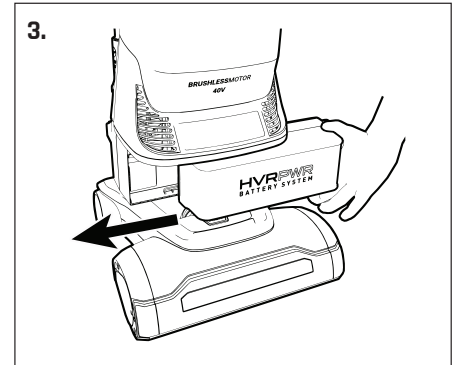
POUR COMMENCER / PRIMEROS PASOS



1. Insérez la poignée et fixez-la avec le boulon fourni.
Inserte el asa y fijela con el perno suministrado.



2. Attachez le tuyau au couvercle du sac en le fixant à l'intérieur de l'ouverture.
Fije la manguera a la cubierta de la bolsa asegurándola dentro de la abertura.



3. Faites glisser la batterie entièrement chargée dans le logement de la batterie pour qu'elle se verrouille en place.

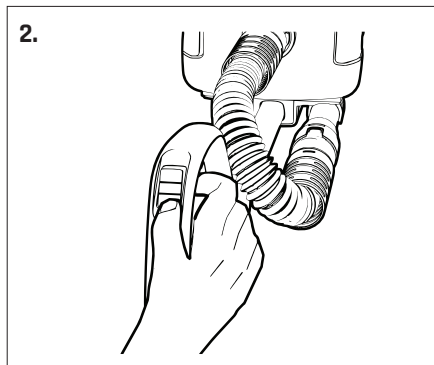
Deslice la batería completamente cargada en la ranura de la batería para que encaje en su sitio.

COMMENT L'UTILISER / CÓMO UTILIZARLO



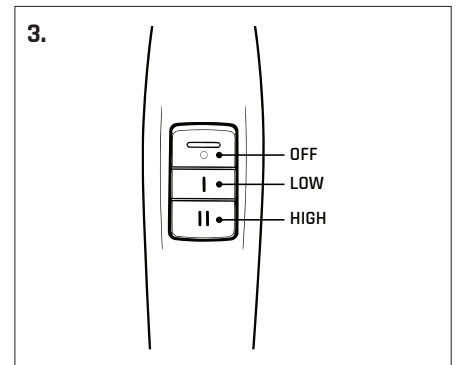
1. Placez un pied à l'endroit où se trouve l'icône du pied sur la buse, puis tirez la poignée vers l'arrière pour l'incliner.

Coloque un pie donde está el icono del pie en la boquilla y, a continuación, tire de la empuñadura hacia atrás para reclinarla.



2. Pousser l'interrupteur vers l'avant pour mettre l'appareil en marche.

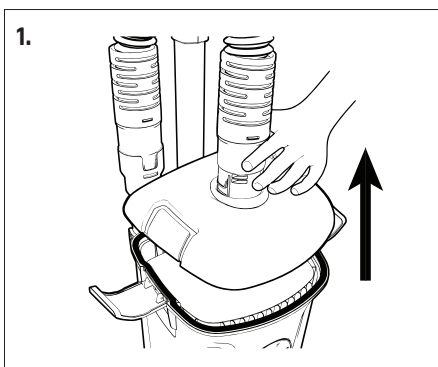
Empuje el interruptor hacia adelante para encender la unidad.



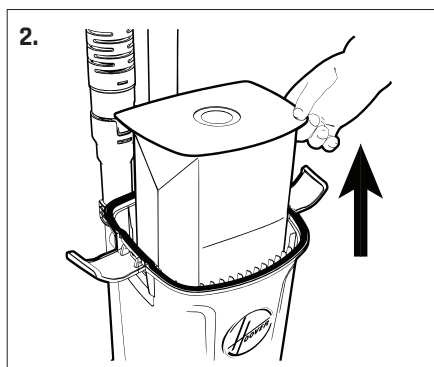
3. Pousser l'interrupteur en mode I pour le niveau bas. Mode II pour haut. Repousser à 0 pour éteindre.

Pulse el interruptor en modo I para baja. Modo II para alto. Vuelva a pulsar 0 para apagado.

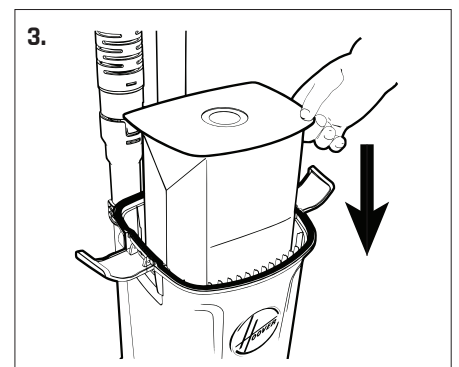
COMMENT REMPLACER LE SAC / CÓMO SUSTITUIR LA BOLSA



1. Retirer le couvercle pour accéder au sac.
Retire la tapa para acceder a la bolsa.



2. Retirer l'ancien sac.
Retire la bolsa vieja.



3. Insérer le nouveau sac.
Inserte la nueva bolsa.