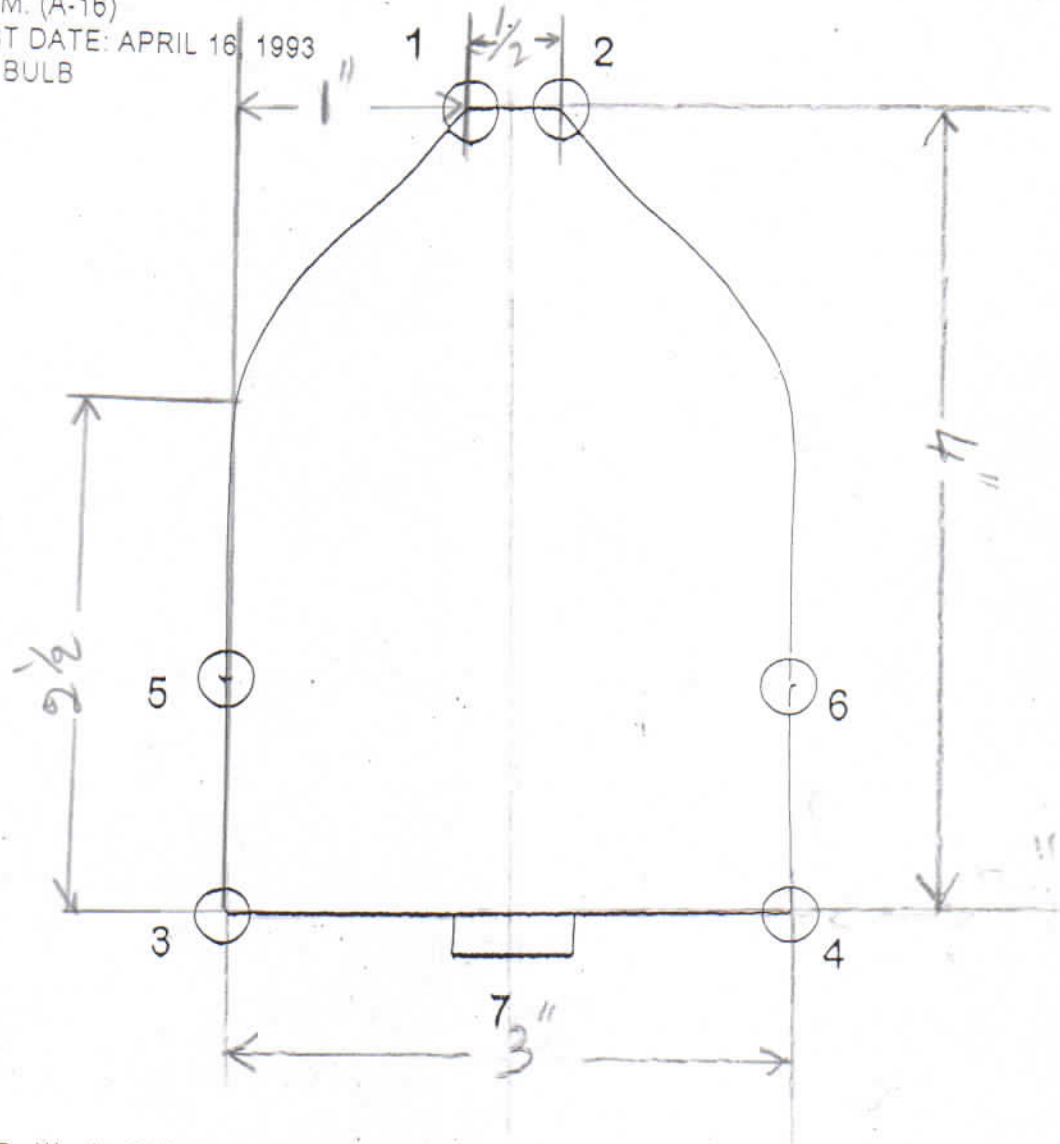


Accon Marine, Inc.

Template for Pop-Up® Lights

USCG Approval 33 CFR 183.810
MEETS COLREGS/72 AND ABYC A-16
TESTED BY IMANNA LABORATORY INC.
MANUFACTURED BY ACCON MARINE, LLC
MODEL # 204-M
1 N.M. (A-16)
TEST DATE: APRIL 16 1993
#78 BULB



- Drill six 5/16" diameter holes.
- Holes 1, 2, 3 & 4 are for turning the saw blade at cutout.
- Holes 5 & 6 are for screw head clearance.
- #7 notch cutout is only required for stainless-steel lights. It is okay to cut this out for plastic lights but not necessary.