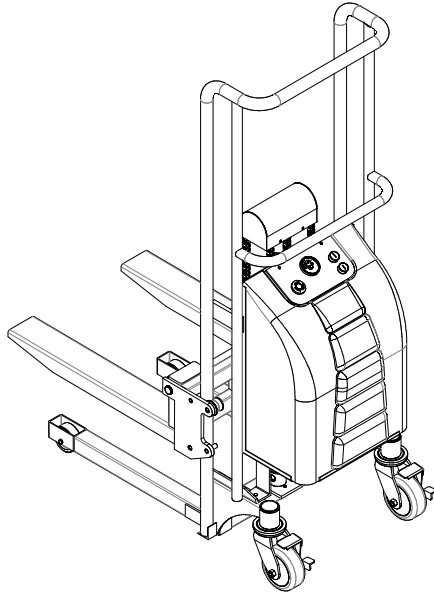
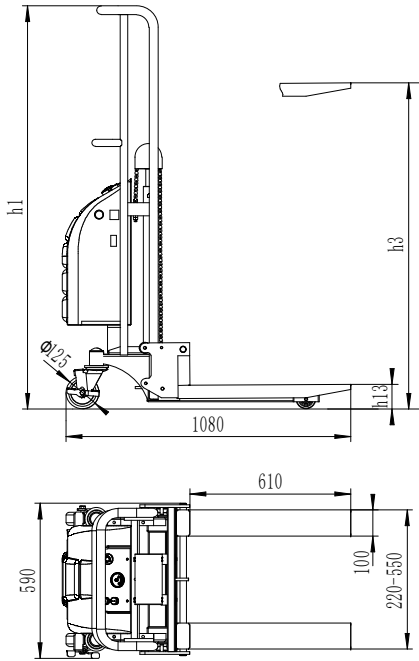


Electric Hydraulic Stacker

- Operation manual
- Spare parts catalogue



I .Main technical parameters:



Model	DDJ		
Capacity	400		kg
Min. height	h13	90	mm
Max. height	h3	1100/1300/1500/1700	mm
Fork width		220-550	mm
Fork length		610	mm
Total height	h1	1360/1560/1760/1960	mm
Battery	12V33AH		
Rise motor	12V800W		
Self-weight			

II. Scope of application:

DDJ series electric hydraulic stacker is a kind of high-lift transportation tool which is applicable for short-distance transportation as well as goods lifting and lowering. Besides, it can also be used as goods stacking.

III. Operation condition:

1. Lift table should be operated on solid and flat ground;
2. Operation temperature: -20-40C°.

IV. Notes(warning):

1. Read the instruction carefully before operation and get to know the performance and operation requirements of the electric hydraulic stacker. And the electric hydraulic stacker can't be used unless it is authorized.
2. Do not overload the electric hydraulic stacker and operate it within the rated load. Overloading will cause damage to the electric hydraulic stacker and human body.
3. It is forbidden for operators to stand or sit on the fork to work.
4. Don't put the hands or feet under the lowering fork.
5. Please brake the truck when loading goods to prevent it from moving.
6. Off-set loading is forbidden when loading goods, and the goods should be distributed uniformly on the whole fork.
7. Loose or unstable goods are not permitted to be loaded.
8. Don't put goods on working fork for a long time.
9. The truck can't be moved when goods are being lifted.
10. The truck can only be moved on flat and hard ground, it is forbidden to be used on sloping ground or rugged ground;
11. When putting goods on fork which has been hoisted, the weight of goods should be within rated load, and the goods should be loaded lightly. (Safety valve only works in hoisting process, if the truck has been hoisted, and then put overweight goods on it, the safety valve can't work. In this way, the truck may be damaged.)

12. Please operate strictly according to “notes (warning)”, otherwise it

13. Don't operate the truck when the battery is charging.

14.If it is not used for a long time ,the battery must get a full charge .

15.Turn off the power when you stop using.

16.When low power occurs ,please charge in time.

V. Operation methods:

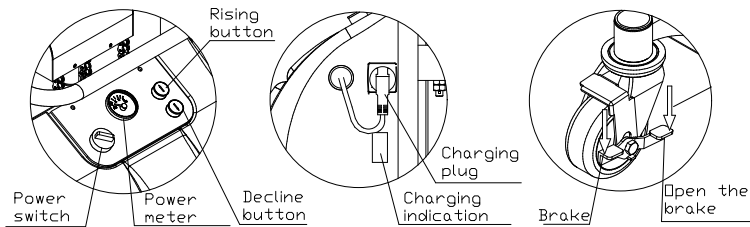


Figure 1

figure 2

figure 3

1、 See figure1,when turning the power switch clockwise and the power meter will open.

2、 See figure1, press the rising button and the fork will rise。 Release the rising button and the fork rising will stop.

3. See figure1, press the decline button and the fork will descend。 Release the decline button and the fork descending will stop.

4、 See figure1,when turning the power switch anticlockwise and the power meter will close。

5、 See figure 2,disconnect the charging plug, and plug the charge plug into the power socket then the charging will start。

6、 See figure 2 , see the charging indication , disconnect the charging plug if the power is full.

7、 See figure 3 , step on the brake pedal of the universal wheel , which marked off, then the wheel will brake.

8、 See figure 3 , step on the brake pedal of the universal wheel , which marked 0n, then the braking will release.

VI. Maintenance and upkeep:

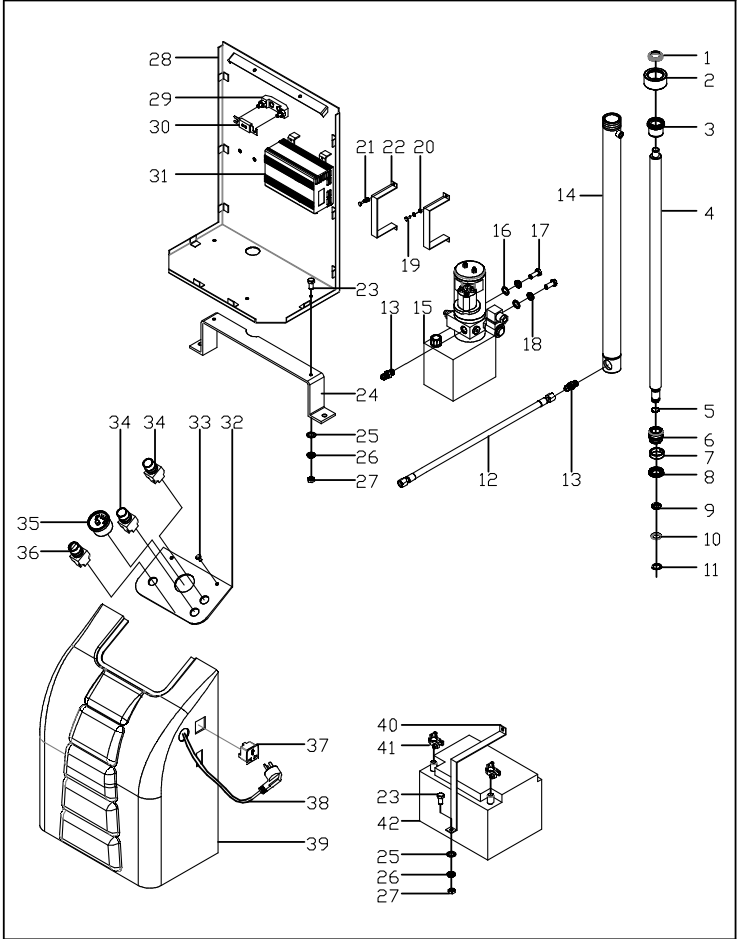
It is very important to conduct necessary maintenance and upkeep so as to prolong the service life and safety of the stacker. Please check the manual hydraulic stacker before operation according to the following items:

1. Whether there is any distortion and bending of various positions of the electric hydraulic stacker.
2. Please check the brake of the truck and the wearing condition of the wheels.
3. Check oil leakage in the hydraulic system.
4. Please add or fill lubricant to each friction surface before daily operation.
5. If there is any failure, the manual hydraulic stacker should be repaired at once, then it can be put into use again.
6. Chang the hydraulic oil every twelve months, choose the following or close brand hydraulic oil according to the climate conditions of different areas:
 - a) YBN32 is adaptive under the environment temperature of $-10\sim+40^{\circ}\text{C}$;
 - b) YCN32 is adaptive under the environment temperature of $-20\sim+40^{\circ}\text{C}$.

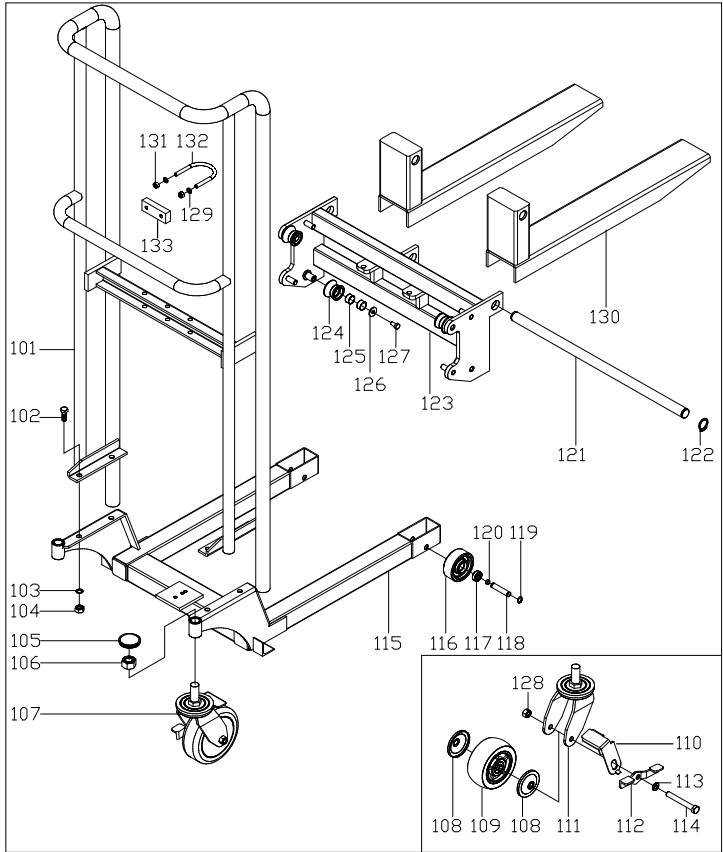
VIII. Typical fault obviating methods

fault	reason	Obviating method
The fork don't rise	① overload ② under voltage ③ relief valve pressure is low ④ The pump is damaged ⑤ The motor is damaged ⑥ the rising button is damaged	① lighten the load ② charging ③ adjust the relief valve ④ repair the pump ⑤ repair the motor ⑥ repair or change the button
The height of the fork rising	the hydraulic oil is not enough	② add enough hydraulic oil
The fork don't descend	① The pump is damaged ② the decline button is damaged	① repair the pump ② repair or change the button

IX. Spare parts catalogue



No.	Name	Qty.		No.	Name	Qty.
1	Dust ring 28	1		23	Screw M6X20	4
2	Guide bush	1		24	Fix mount of box	1
3	Slide bushing	1		25	Washer 6	4
4	Piston rod	1		26	Spring washer 6	4
5	O-ring16X2.65	1		27	Screw M6	4
6	Piston	1		28	Box	1
7	MWRT	1		29	Seat of fuse	1
8	Sealing 25X35X8	1		30	Fuse	1
9	Half ring	2		31	Charging	1
10	Washer	1		32	Board of meter	1
11	Ring for axle 20	1		33	Bolt M6X20	2
12	Pipe	1		34	Button	2
13	Oil connection	2		35	Meter	1
14	Cylinder tube	1		36	Power switch	1
15	Pump	1		37	Socket	1
16	Washer 8	2		38	Charging line	1
17	Screw M8X20	2		39	Housing	1
18	Spring washer 8	2		40	Fix mount of battery	1
19	Bolt M4X16	4		41	Connect of line	2
20	Washer 4	4		42	Battery	1
21	Spring washer 4	4		43		
22	Fixed mount of charging	2		44		



No.	Name	Qty.	No.	Name	Qty.
101	Gantry	1	119	Retaining ring for axle 12	4
102	ScrewM10X25	4	120	Washer	4
103	Washer10	4	121	Long shaft	1
104	Nut M10	4	122	Retaining ring for axle 24	2
105	Cover	2	123	Lifting frame	1
106	Nut M20	2	124	Pulley	4
107	Universal wheel	2	125	Bush1611	8
108	Cover for wheel	4	126	Washer 8	4
109	Wheel	2	127	Bolt M8X16	4
110	Break pad	2	128	Nut M12	2
111	Universal wheel frame	2	129	Washer 8	2
112	Break lever	2	130	Fork	2
113	Washer12	2	131	Nut M8	2
114	Screw	2	132	U screw	1
115	Frame	1	133	Cylinder cushion	1
116	Wheel	2			
117	Bearing 6201	4			
118	Shaft	2			