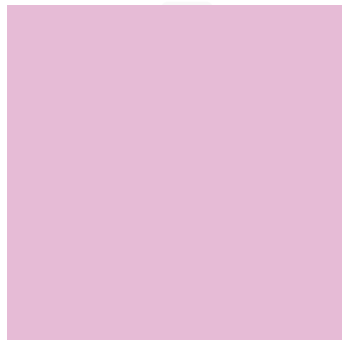




# Custom Warm Grey Mailers Printing Guidelines

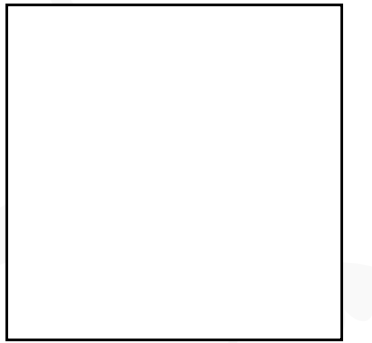
# Design / Printing Colors Available



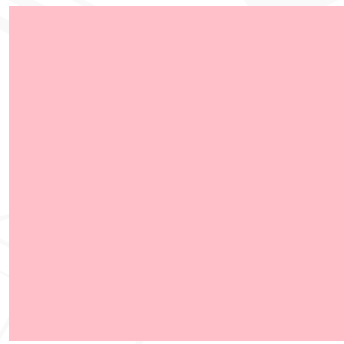
Astral



Sea Green



White



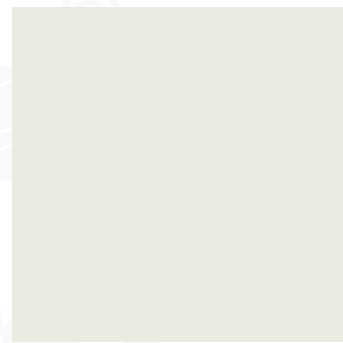
Pink



Green



Biloba  
Flower



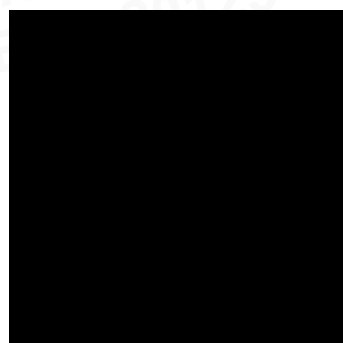
Silver



Midnight  
Blue



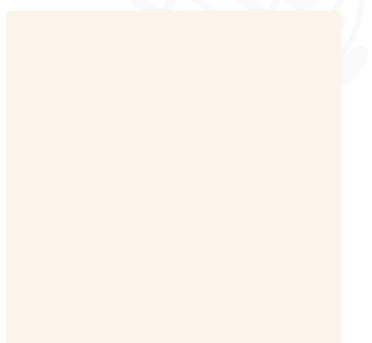
Grey



Black



Gold

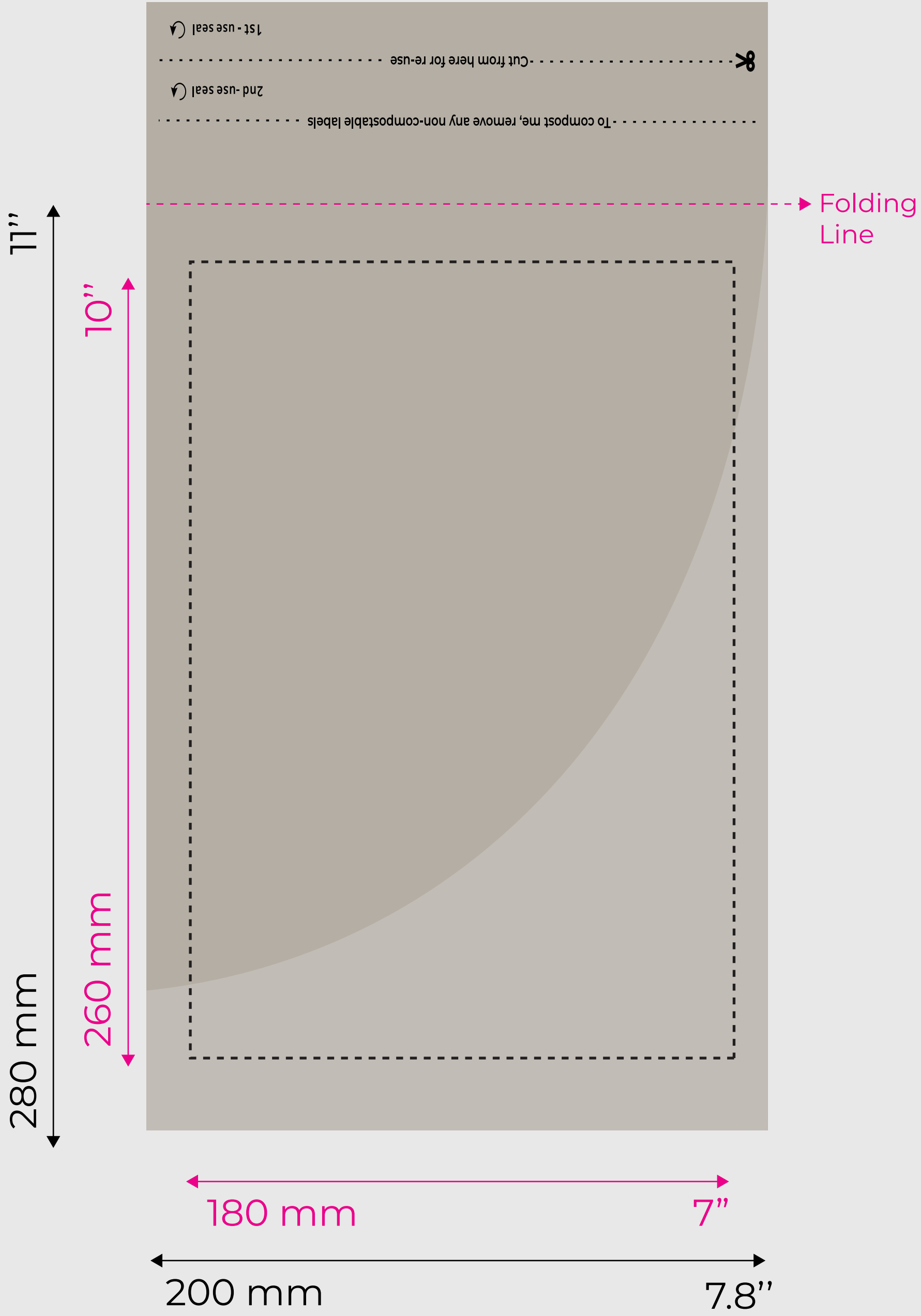


Citrine  
White

# Sizes

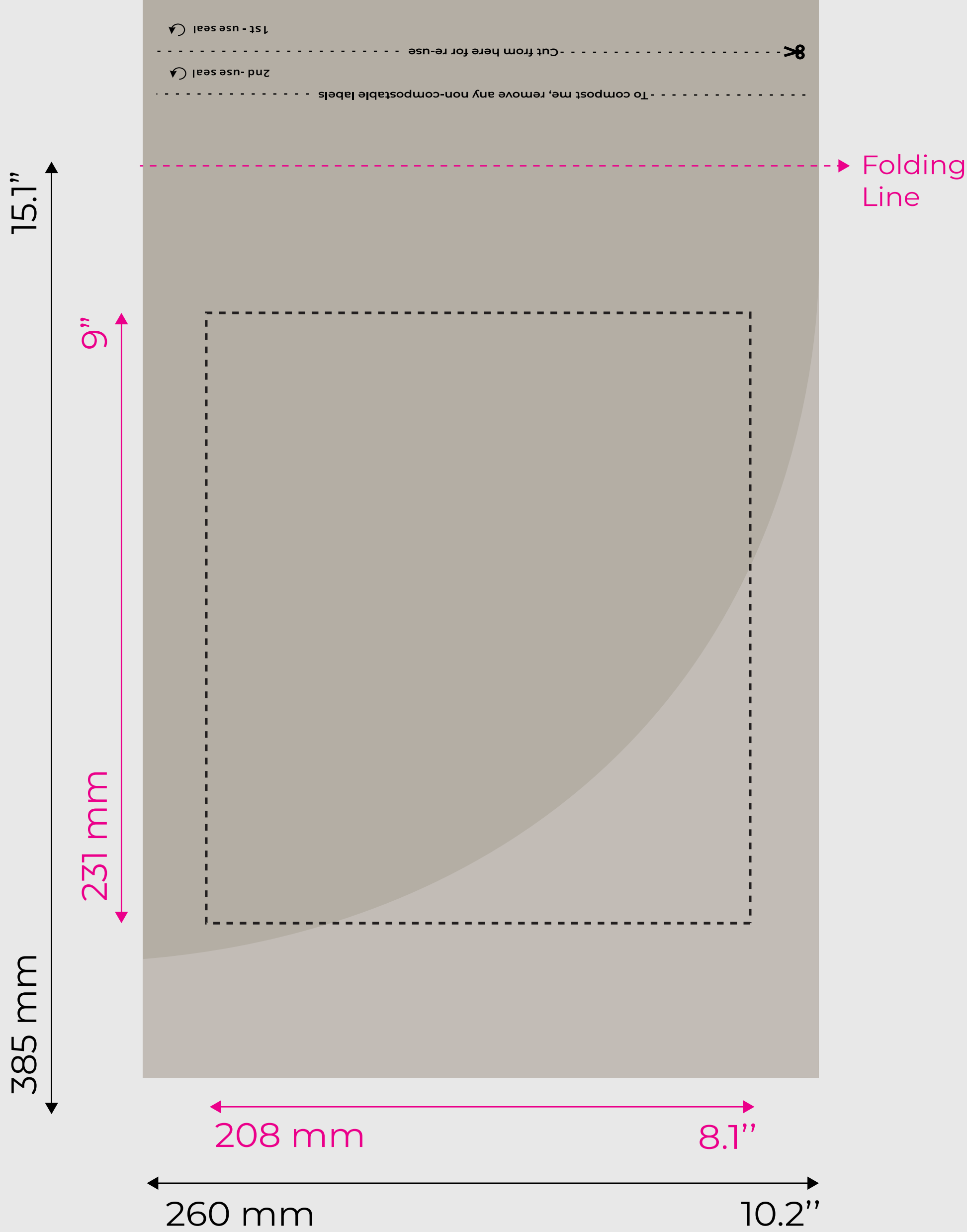
S: 200 x 280 mm

Dotted Lines in the mockup won't be visible in the final print.



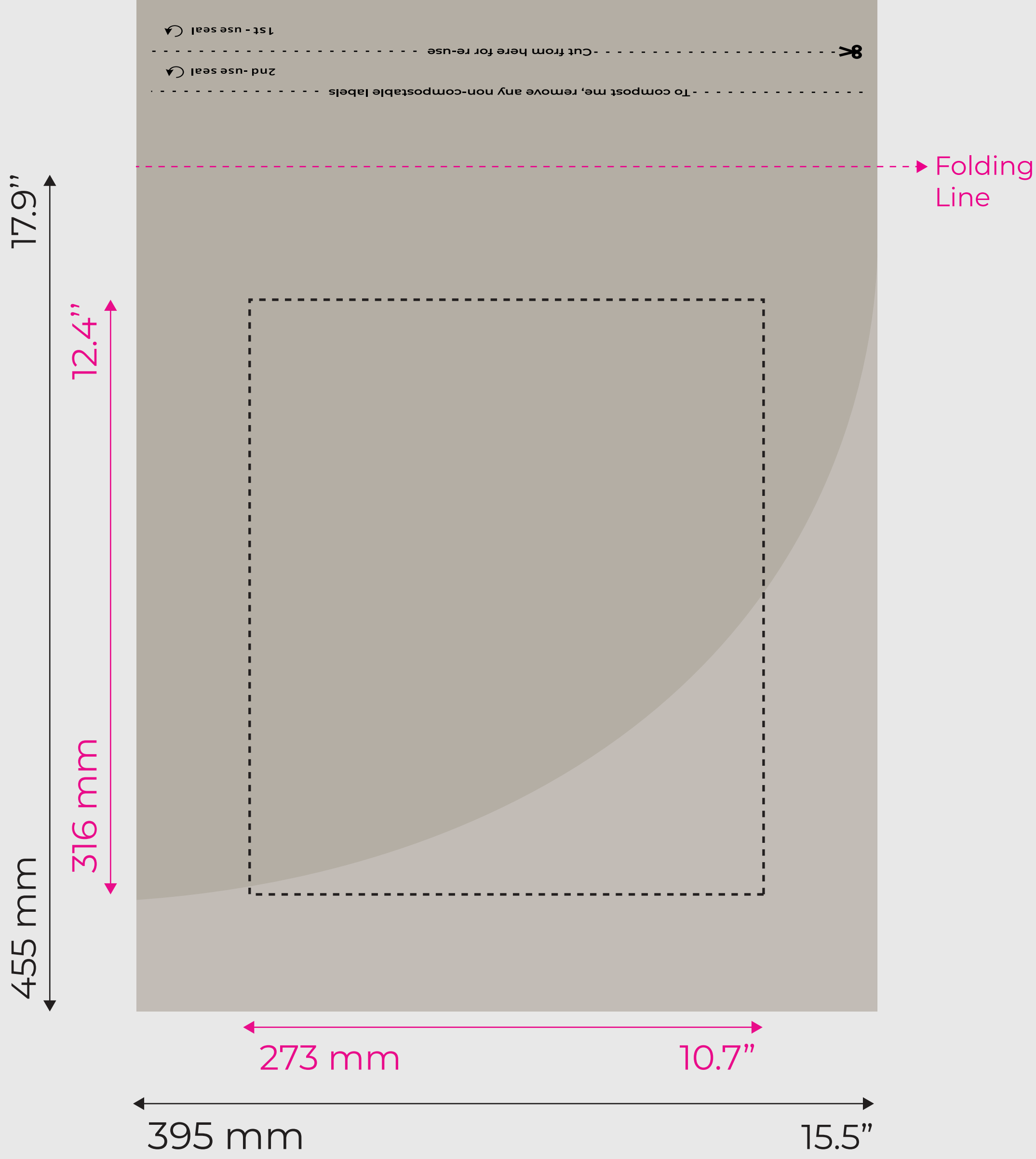
# S-M : 260 x 385 mm

Dotted Lines in the mockup won't be visible in the final print.



# L: 395 x 455 mm

Dotted Lines in the mockup won't be visible in the final print.



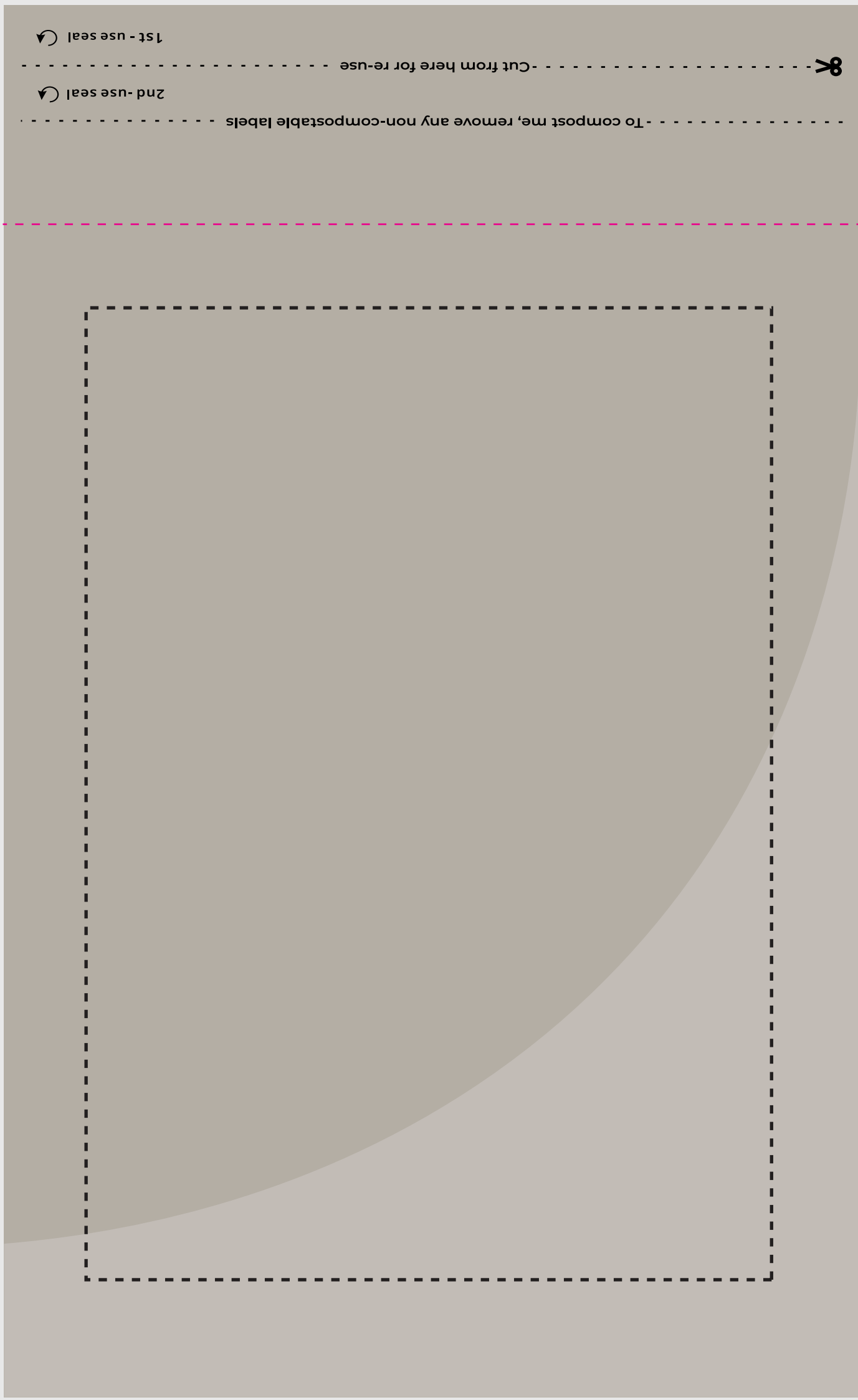
# XL: 420 x 594 mm

Dotted Lines in the mockup won't be visible in the final print.

594 mm 23.3"

475 mm 18.7"

420 mm 13.1" 16.5"



Folding Line

- **The total printable area is defined by the dotted black area/box.**
- **Only one color can be printed.**
- **Any kind of Logo, Design or Text can be printed.**
- **Need customization on both sides.**  
**Contact - [hello@suprpack.com](mailto:hello@suprpack.com)**

# REQUIREMENTS

- An open vector file (AI, EPS, SVG, PDF).
- Good quality image files in JPG & PNG format.
- Text - font name & font title
- Provide the outline text in case you dont have the font.





# SUPR PACK PTY LTD



+61 422 453 240  
design@suprpack.com



103, 566 ST. Kilda RD,  
Melbourne VIC, 3004

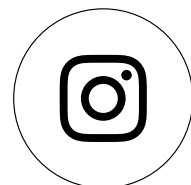


Suprpack.com  
Suprpack.com.au

**ENGAGE**  
NOW



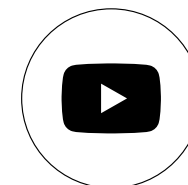
supr.pack



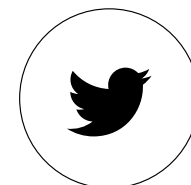
suprpack



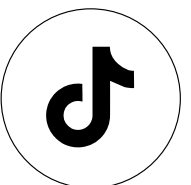
suprpack



supr pack



suprpack



suprpack