

# COLLECTION

VILMERS

VILMERS FABRIC EUROPEAN COLLECTION 2023



3 CARE SYMBOLS

4 BOLD MICROFIBERS

5 Texas

6 GREEN FIBERS

7 Beryl

8 Olvitine

9 LIKE LEATHER

10 Bull

11 Jersey

12 PURE LEATHER

13 Diamonds

14 Granada

15 Vintage

16 PURE NATURE

17 Sandstone

18 ROUGH STRUCTURE

19 Alis

20 Bergen

21 Coltan

22 Fusion

23 Garnet

24 Marble

25 Oasis

26 Taffie

27 SIMPLY NORDIC

28 Austin

29 Casa

30 Eton

31 Hawks

32 Honey

33 Lapis

34 Lido

35 Livale

36 Natron

37 Nordby

38 Opal

39 Paros

40 Rocky crystal

41 Sneak

42 Unit

43 SMOOTH VELVET

44 Adore

45 Seven

46 Velvetlux

47 CHUNKY CORDUROY

48 Lisboa

# CARE SYMBOLS



Wash at or below  
(degrees in Celsius/Fahrenheit).



Do not wash.



Iron cool.



Do not iron.



Dry clean.



Do not dry clean.



Do not tumble dry.



Water-resistant.



Easy care.



Sustainable.

# BOLD

MICROFIBERS

Enduring and easy to clean.

Composition | 55% PES, 40% PU, 5% CO

Martindale | 60 000

Lightfastness | 4-5

Pilling | 4-5



# TEXAS

CAT 3



GREEN  
Stitching Stone Grey



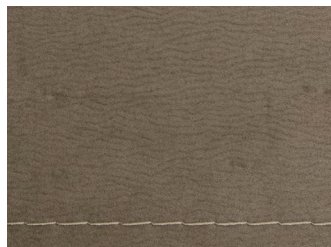
LIGHT GREY  
Stitching Dark Grey



COGNAC  
Stitching Saddle Brown



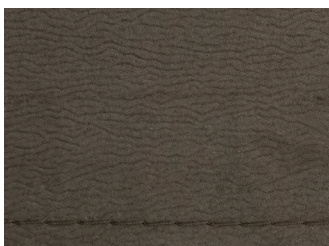
IVORY  
Stitching Pastel Brown



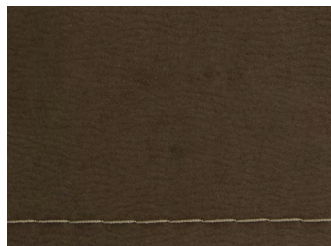
SILVER  
Stitching Silk Grey



DARK GREY  
Stitching Light Grey



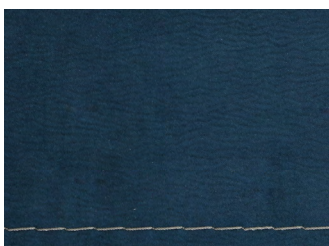
GREY  
Stitching Chocolate



ELEPHANT  
Stitching Stone Grey



YELLOW  
Stitching Chocolate



BLUE  
Stitching Grey

# GREEN

FIBERS

Sustainable fabrics.

Composition | 55% RPES, 36% PES, 9% RCO

Martindale | 70 000

Lightfastness | 5

Pilling | 5



# BERYL

CAT 3

Boucle fabric



BRIGHT WHITE



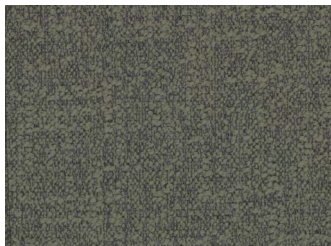
RAINY DAY



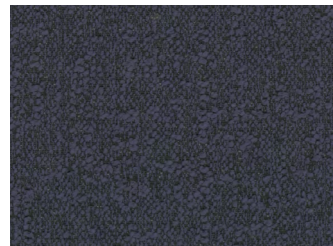
ALUMINIUM



CHOCOLATE  
BROWN



MYRTLE



BLUE NIGHTS



ANTHRACITE

Composition | 100% RPP  
Martindale | 45 000  
Lightfastness | 5  
Pilling | 5



# OLVITINE

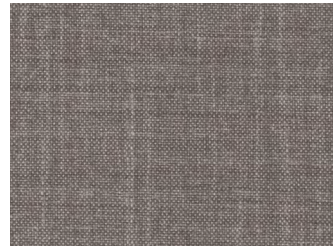
CAT1  
Flat woven fabric



RAINY DAY



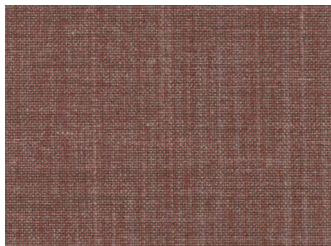
CORNSTALK



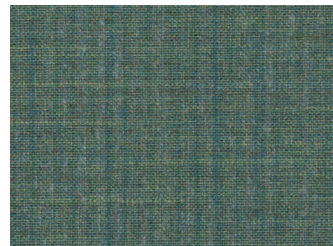
MOON ROCK



CHOCOLATE  
BROWN



COPPER  
BROWN



MYRTLE



STEEL GREY



LIKE

LEATHER

Sustainable leather.

Composition | 96% PES, 4% PU

Martindale | 32 000

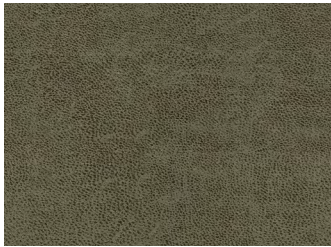
Lightfastness | 3-4

Pilling | 3-4



# BULL

CAT 4



FOREST



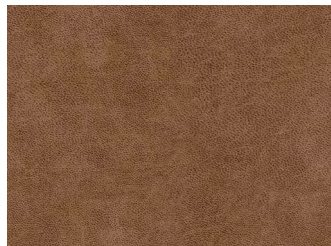
GRAPHITE



BROWN



GREY



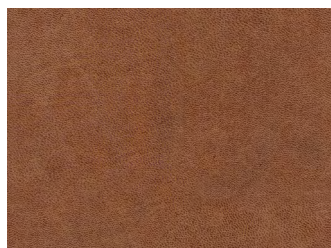
CAMEL



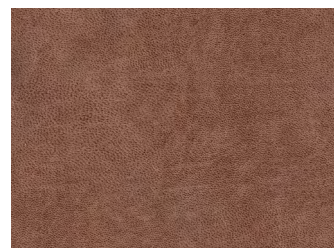
LIVER



NIAGARA



COGNAC



BRANDY



ANTHRACITE

10

VILMERS FABRIC COLLECTION 2023

Composition | 40% PES, 30% LEATHER, 30% AF

Martindale | 30 000

Lightfastness | 4

Pilling | 4-5



# JERSEY

CAT 5



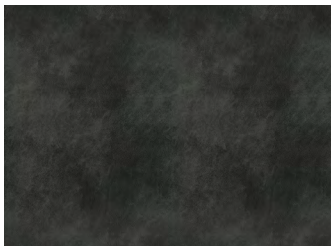
MOSS



DARK GREY



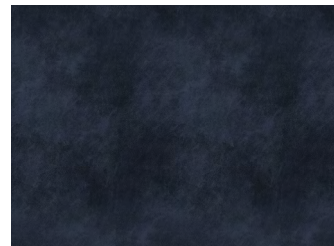
COGNAC



TABACCO



STONE



DARK BLUE

PURE

LEATHER

Natural leather.

Composition | 100% leather

Martindale | -

Lightfastness | 5

Pilling | -



# DIAMONDS

CAT Leather A



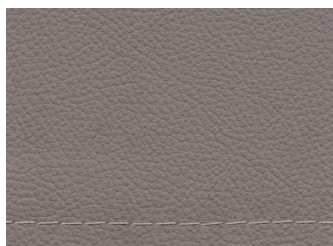
**BRIGHT WHITE**  
Stitching Silk Grey



**CORNSTALK**  
Stitching Stone Grey



**STING**  
Stitching Bisque



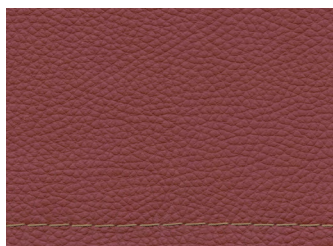
**WALNUT**  
Stitching Stone Grey



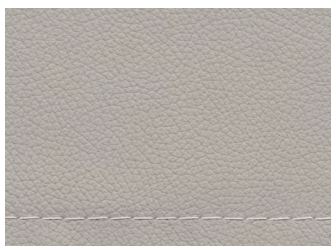
**CHOCOLATE BROWN**  
Stitching Bisque



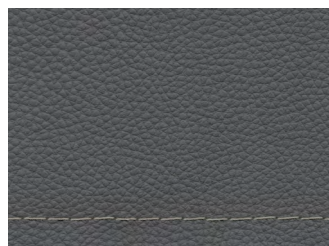
**COPPER BROWN**  
Stitching Cafe



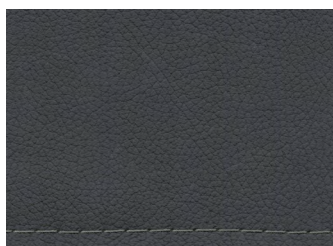
**KARANDA RED**  
Stitching Latte



**ASH**  
Stitching White



**ANTRACITE**  
Stitching Grey Aluminium



**BRISTOL BLACK**  
Stitching Grey

Composition | 100% leather

Martindale | -

Lightfastness | 4-5

Pilling | -



# GRANADA

CAT Leather B



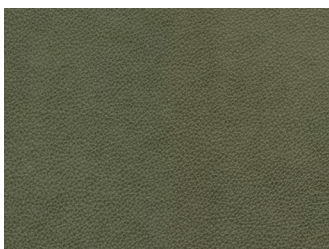
SAVANNAH



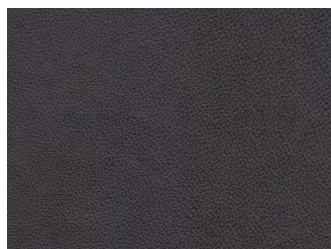
TAUPE



ASH



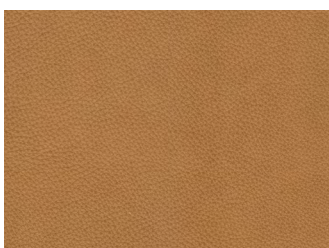
MOSS



GRAPHITE



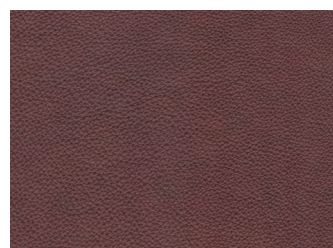
STEEL



SAHARA



OLIVE



COGNAC



BLUE

Composition | 100% aniline leather

Martindale | -

Lightfastness | 3

Pilling | -



# VINTAGE

CAT Leather B



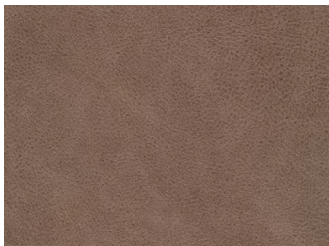
COGNAC



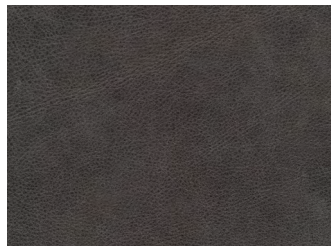
BROWN



OLIVE



TAUPE



GREY

PURE

NATURE

Natural fibers.



Composition | 63% CO, 37% LI

Martindale | 32 500

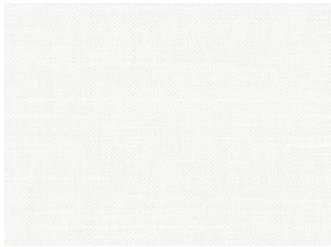
Lightfastness | 3

Pilling | 4

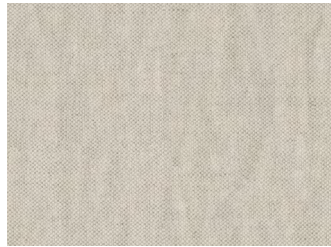


# SANDSTONE

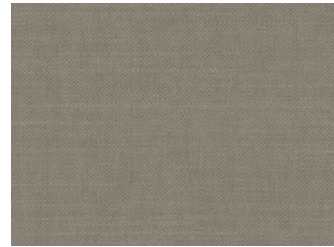
CAT 4



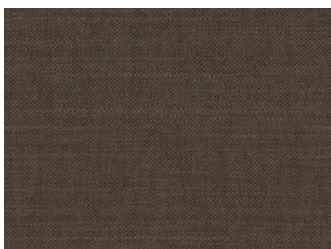
BRIGHT WHITE



PARCHMENT



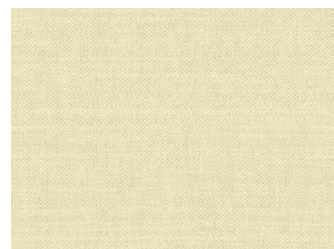
ALUMINIUM



CHOCOLATE  
BROWN



COPPER BROWN



SMOKE GREY



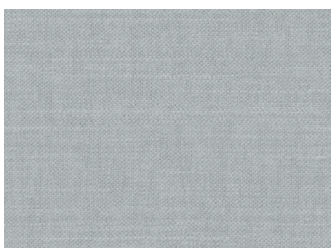
CORNSTALK



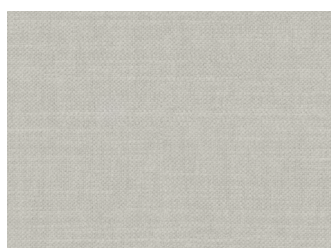
TEA



BLUE NIGHTS



MIRAGE GREY



ASH

# ROUGH

STRUCTURE

Fabrics with character.

Composition | 53% PES, 35% PAN, 6% CO, 6% CV

Martindale | 25 000

Lightfastness | 4-5

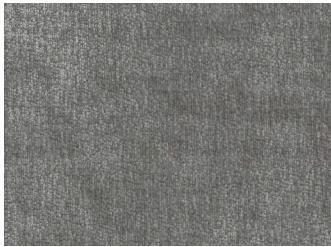
Pilling | 4-5



# ALIS

CAT 2

Chenille fabric



BEIGE



ANTRACIT



GREEN



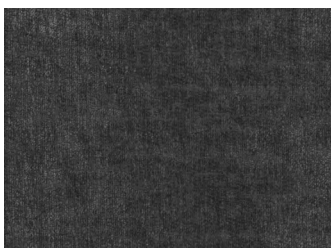
ECRU



MIDNAITT



GRA



GRAFIT



LYS GRA



CINNAMON

Composition | 100% PES

Martindale | 100 000

Lightfastness | 5

Pilling | 5



# BERGEN

CAT 2



BRIGHT WHITE



RAINY DAY



NAUGAT



CORNSTALK



TOBACCO BROWN



BRISTOL BLACK



STAPLE GREY



JET STREAM

Composition | 100% PES  
Martindale | 100 000  
Lightfastness | 4-5  
Pilling | 4



# COLTAN

CAT 3  
Boucle fabric



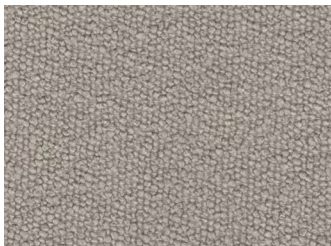
BRIGHT WHITE



RAINY DAY



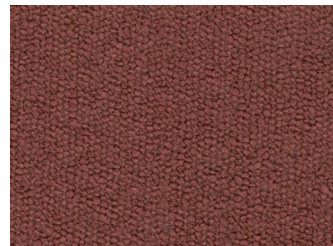
CORNSTALK



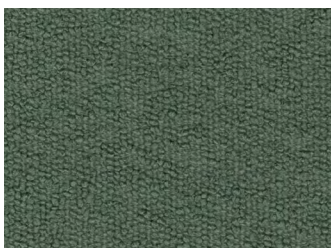
ALUMINUM



CHOCOLATE  
BROWN



COPPER BROWN



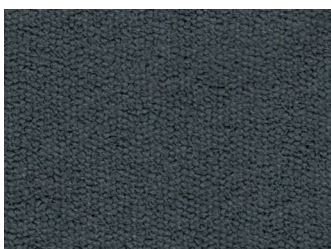
MYRTLE



BLUE NIGHTS



ASH



BRISTOL BLACK

Composition | 100% PES

Martindale | 85 000

Lightfastness | 5

Pilling | 4-5



# FUSION

CAT 2

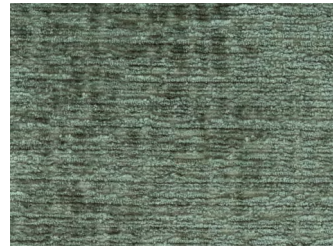
Chenille fabric



INDIGO



CREAM



THYME



ANTHRACITE



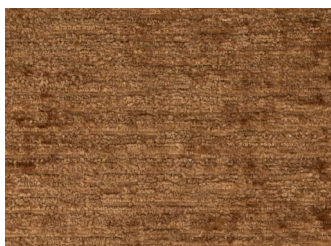
WOOD



BRANDY



ARMY



COGNAC

Composition | 100% PES

Martindale | 100 000

Lightfastness | 5

Pilling | 4-5



# GARNET

CAT 3

Chenille fabric



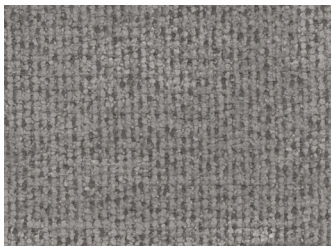
BRIGHT WHITE



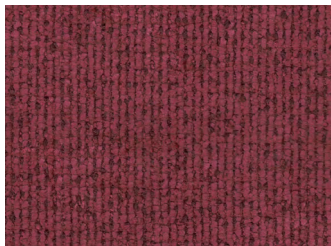
ALUMINIUM



CORNSTALK



MOON ROCK



KARANDA RED



MYRTLE



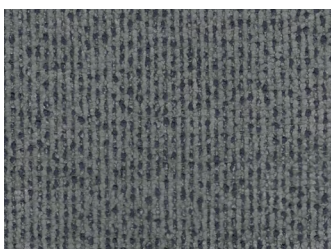
SMOKE BLUE



BLUE NIGHTS



ASH



STEEL GREY

Composition | 90% PES, 10% N

Martindale | 40 000

Lightfastness | 4

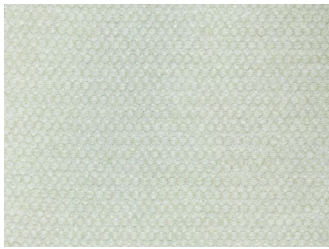
Pilling | 4



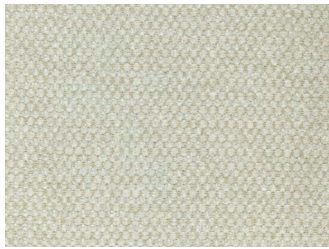
# MARBLE

CAT 1

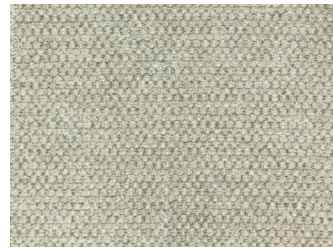
Micro Chenille fabric



PASTEL  
PARCHMENT



RAINY DAY



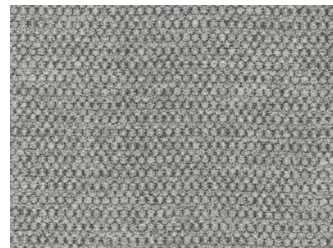
SILVER BIRCH



PINENEEDLE



MIRAGE GREY



ASH



SMOKE BLUE



STEEL GREY



MOONLESS  
NIGHT



Composition | 100% PES

Martindale | 100 000

Lightfastness | 5

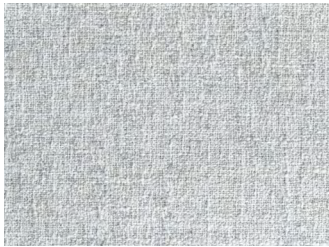
Pilling | 4



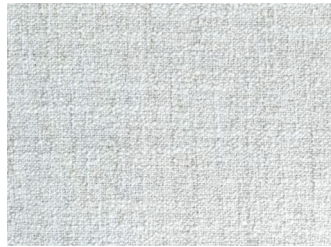
# OASIS

CAT 2

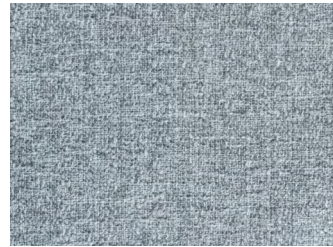
Chenille fabric



SHELL



NATUREL



ASH GREY



DARK BLUE



GREY



WOOD



TURTLE



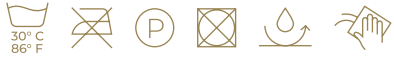
LAVA

Composition | 48% PES, 37% PAN, 8% CO, 7% WO

Martindale | 35 000

Lightfastness | 5

Pilling | 3-4



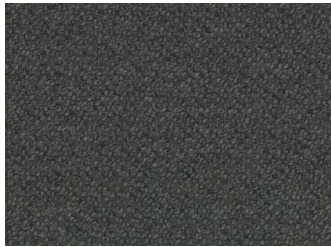
# TAFFIE

CAT 4

Boucle fabric



ECRU



GRAFFIT



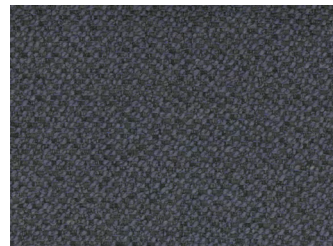
LATTE



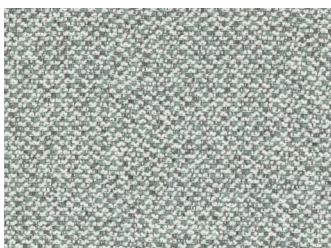
SILVER



GREEN



GRÅ



GRANIT



YELLOW

# SIMPLY

NORDIC

Scandinavian inspired fabrics.

Composition | 100% PES

Martindale | 115 000

Lightfastness | 4-5

Pilling | 4



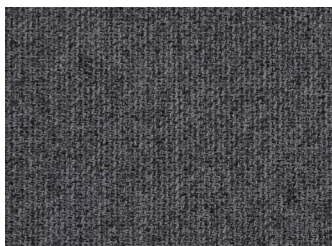
# AUSTIN

CAT 2

Micro Chenille fabric



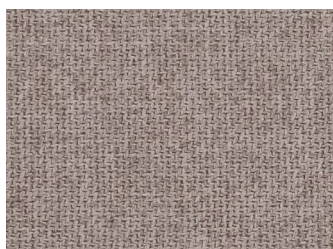
LYS GRÅ



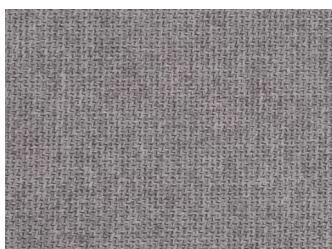
GRÅ



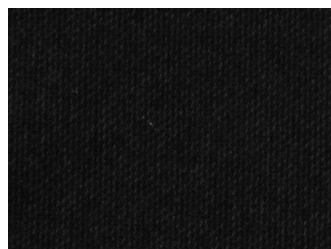
MULDVAD



BEIGE



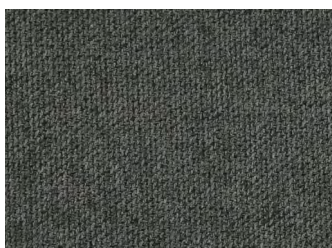
SILVER



SORT



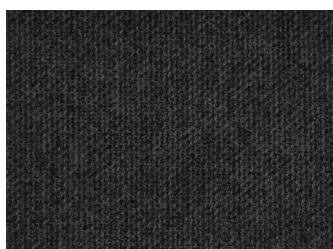
GOLDEN  
YELLOW



GRØNN



DYP BLÅ



MØRK GRÅ



BRUN



RUST

Composition | 100% PES

Martindale | 50 000

Lightfastness | 5

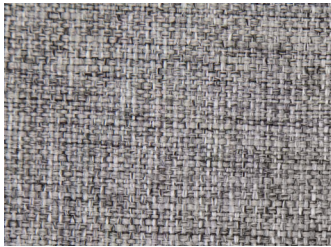
Pilling | 4-5



# CASA

CAT1

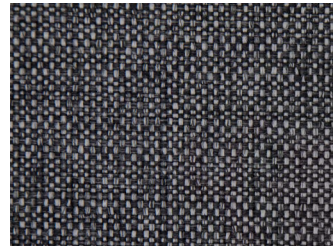
Flat woven fabric



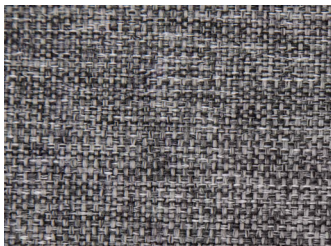
STONE



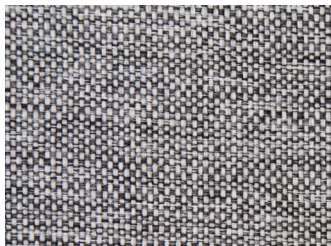
NIGHT



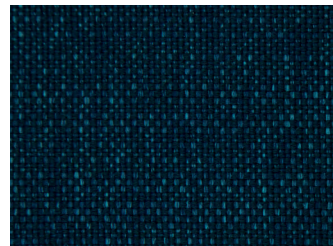
GRANIT



DARK GREY



SILVER



BLUE



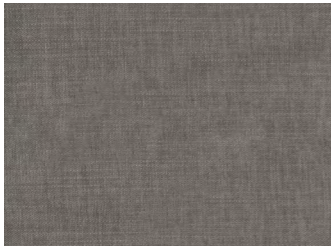
TAUPE

Composition | 100% PES  
Martindale | 35 000  
Lightfastness | 4-5  
Pilling | 4



# ETON

CAT 2  
Chenille fabric



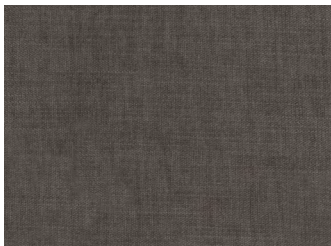
LIGHT GREY



WATER GREEN



CEMENT



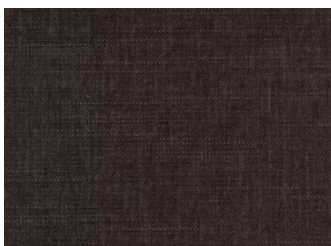
ASH



TRUFA



SKY



MOUSE



TURQUOISE



PINK



RED

Composition | 100% PES  
Martindale | 85 000  
Lightfastness | 5  
Pilling | 4

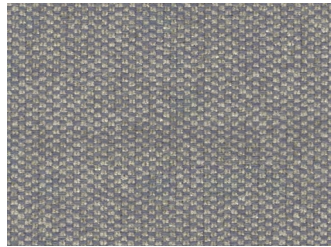


# HAWKS

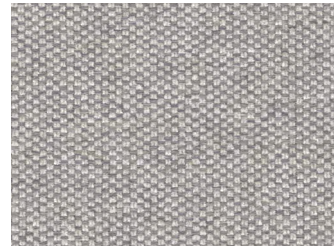
CAT 2  
Chenille fabric



ASH



MIRAGE GREY



MOONSTRUCK



PASTEL  
PARCHMENT



MOONLESS  
NIGHT



STEEL GREY



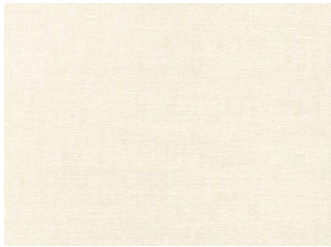
INFINITY

Composition | 100% PES  
Martindale | 100 000  
Lightfastness | 4-5  
Pilling | 4



# HONEY

CAT 3



JET STREAM



CORNSTALK



PINE BARK



SPICED APPLE



MOONSTONE



MARTINI OLIVE



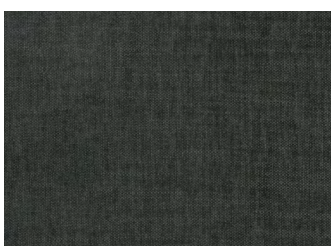
URBAN CHIC



PALOMA



MOON ROCK



PISTOL BLACK

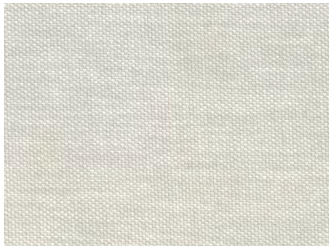


Composition | 100% PES  
Martindale | 100 000  
Lightfastness | 4  
Pilling | 4-5



# LAPIS

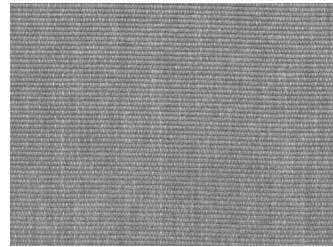
CAT 2  
Chenille fabric



PARCHMENT



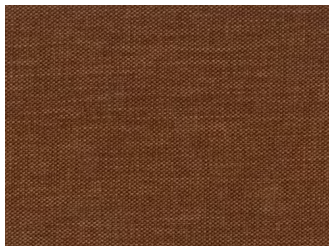
SMOKE GREY



KHAKE



PINE BARK



COPPER BROWN



URBAN GREEN



WILLOW BOUGH



BRISTOL BLACK

Composition | 92% PES, 8% N

Martindale | 40 000

Lightfastness | 5

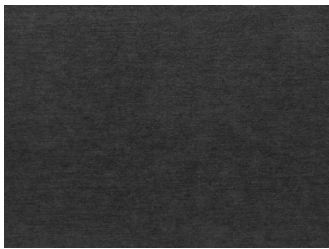
Pilling | 5



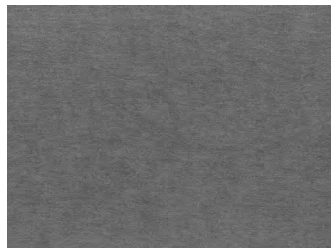
# LIDO

CAT 2

Micro chenille fabric



ANTRACIT



GREY



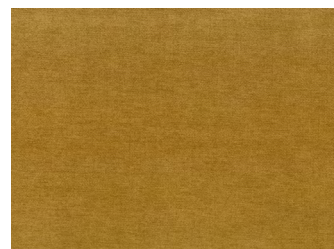
LIGHT BROWN



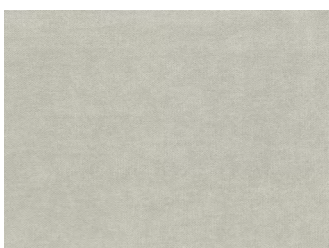
INK BLUE



BEIGE



CUSTARD



LIGHT GREY



BROWN



OLIVE



MARINE

Composition | 100% PES

Martindale | 35 000

Lightfastness | 4-5

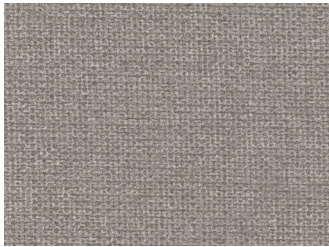
Pilling | 4-5



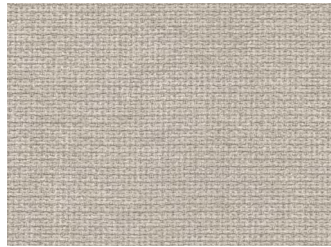
# LIVALE

CAT 2

Chenille fabric



BEIGE



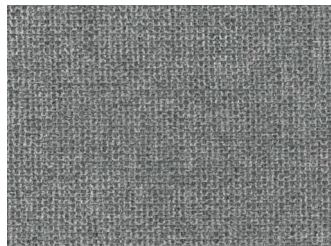
ECRU



BLUE



DARK GREY



GRANITE



FOREST

Composition | 100% PES  
Martindale | 100 000  
Lightfastness | 4  
Pilling | 4



# NATRON

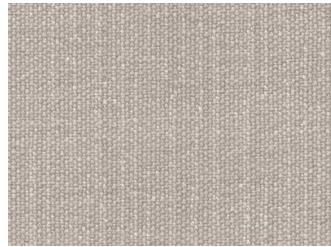
CAT 4  
Chenille fabric



BRIGHT WHITE



SMOKE GREY



ALUMINIUM



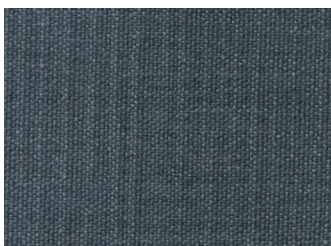
STUCCO



MARSALA



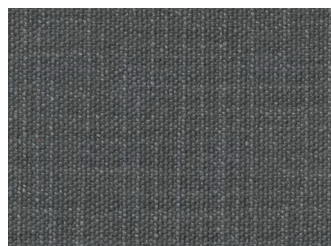
PINENEEDLE



BLUE NIGHTS



ASH



STEEL GREY

Composition | 100% PES

Martindale | 50 000

Lightfastness | 5

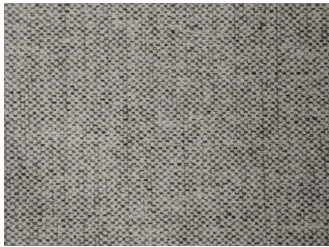
Pilling | 4-5



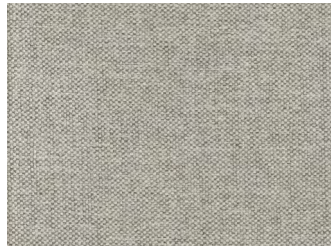
# NORDBY

CAT 2

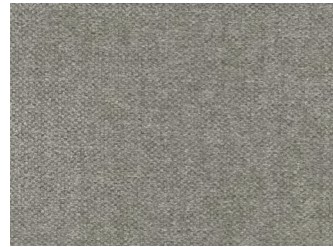
Chenille fabric



GREY



WHITE



SILVER



ASH



STEEL



PETROL



ALU



NAVY



GREEN

Composition | 66% RPP, 34% PES

Martindale | 35 000

Lightfastness | 5

Pilling | 5



# OPAL

CAT 3

Chenille fabric



LINEN



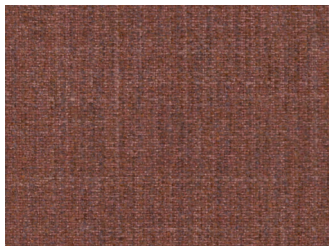
ALUMINIUM



MOON ROCK



CHOCOLATE  
BROWN



COPPER BROWN



BLUE NIGHTS



ASH



STEEL GREY

Composition | 46% PAN, 36% PES, 18% PV

Martindale | 35 000

Lightfastness | 4-5

Pilling | 4-5



# PAROS

CAT 2

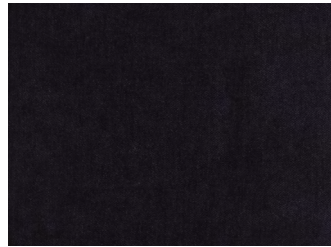
Chenille fabric



SAND



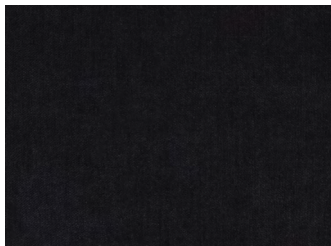
LIGHT GREY



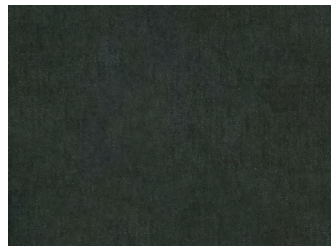
MARINE



IVORY



MIDNIGHT BLUE



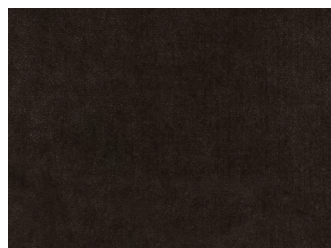
GREEN



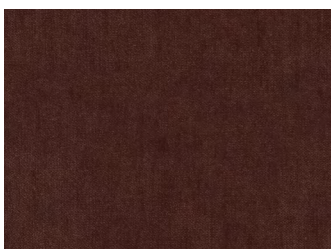
GRAFITT



BLÅ



BROWN



RUST

Composition | 100% PES  
Martindale | 100 000  
Lightfastness | 4  
Pilling | 4

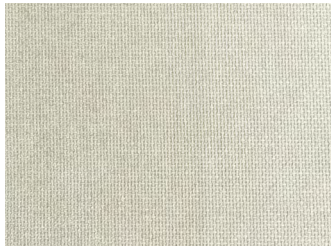


# ROCKY CRYSTAL

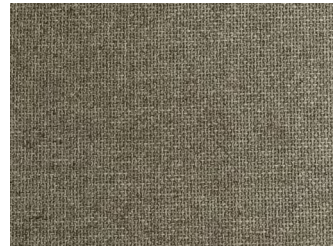
CAT1  
Flat woven fabric



MOONSTRUCK



RAINY DAY



ALUMINIUM



MARSALA



BLUE NIGHTS



SMOKE BLUE



ASH



STEEL GREY

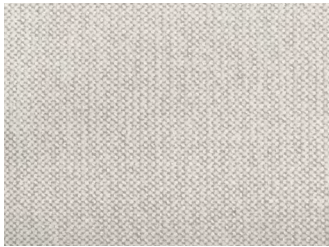


Composition | 100% PES  
Martindale | 38 000  
Lightfastness | 4-5  
Pilling | 4-5

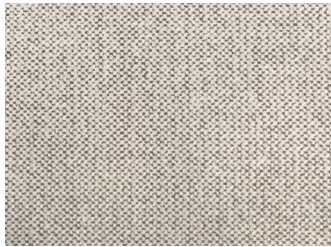


# SNEAK

CAT 2  
Chenille fabric



MOONSTRUCK



STUCCO



SESAME



CORNSTALK



STEEL GREY



LIVER



STEEL



GREY



ANTHRACITE

Composition | 85% PES, 15% CO

Martindale | 35 000

Lightfastness | 4-5

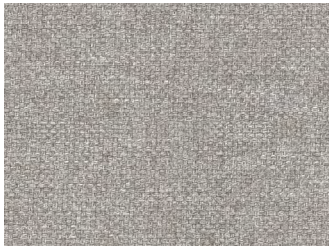
Pilling | 4-5



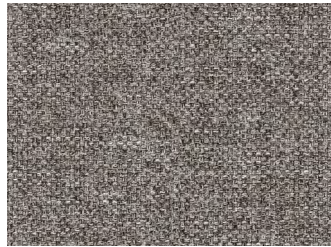
# UNIT

CAT 2

Flat woven fabric



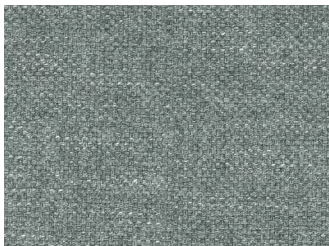
LIGHT GREY



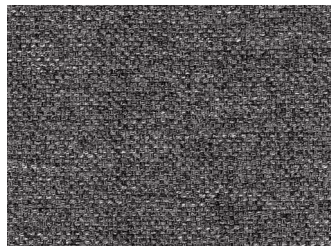
STONE



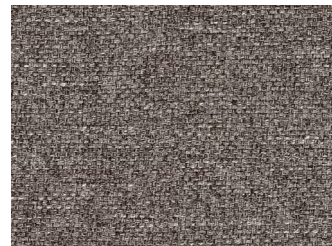
SESAME



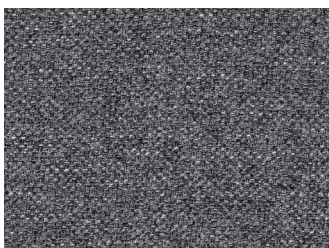
AQUA



DARK GREY



TAUPE



DENIM



ANTHRACITE



BROWN

# SMOOTH

VELVET

Woven and knitted velvet.

Composition | 100% PES

Martindale | 88 000

Lightfastness | 5

Pilling | 5

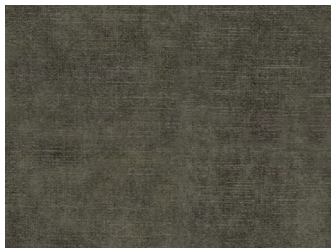


# ADORE

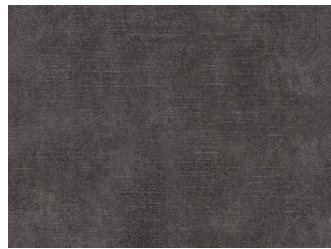
CAT 2



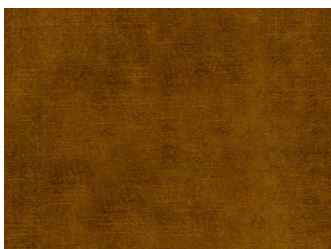
ANTHRACITE



HUNTER



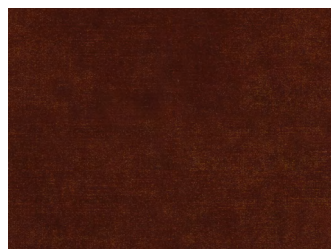
DARK GREY



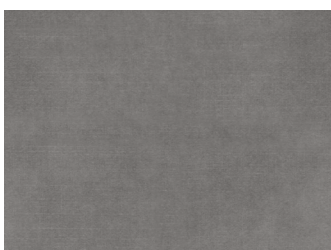
GOLD



PETROL



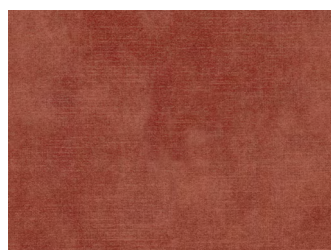
COPPER



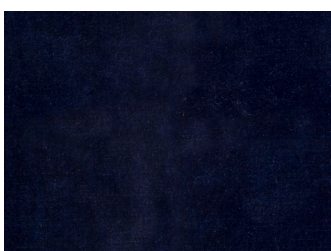
STEEL



COGNAC



BLUSH



INDIGO



MOSS

Composition | 100% PES

Martindale | 100 000

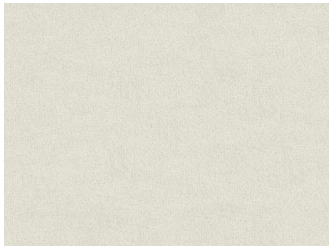
Lightfastness | 4

Pilling | 4-5

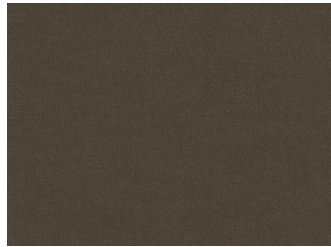


# SEVEN

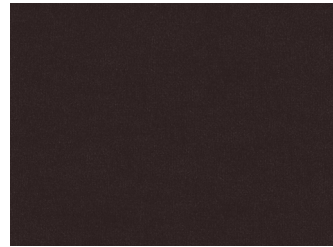
CAT 2



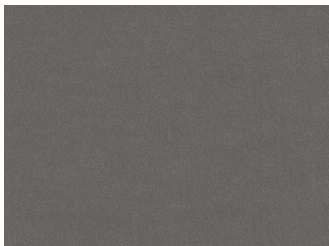
IVORY



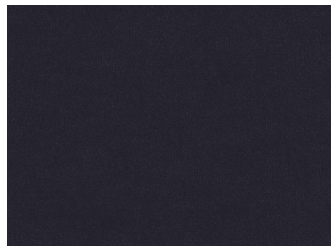
SHITAKE



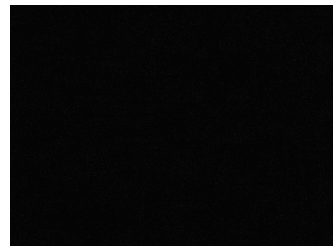
LIVER



DOLPHIN



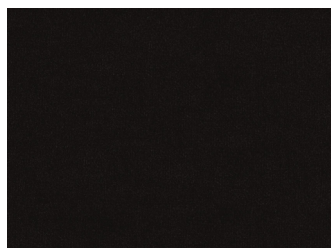
ANTHRACITE



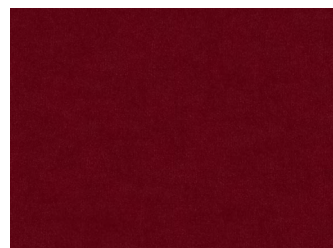
ONYX



DARK BLUE



ESPRESSO



SCARLET

Composition | 81% PES, 19% PV

Martindale | 45 000

Lightfastness | 4-5

Pilling | 4-5

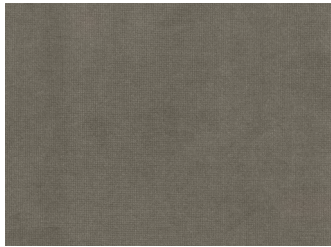


# VELVETLUX

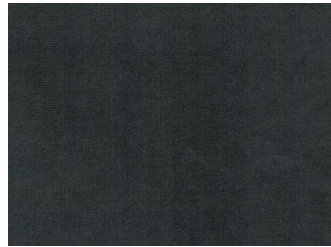
CAT 4



MIDNIGHT BLUE



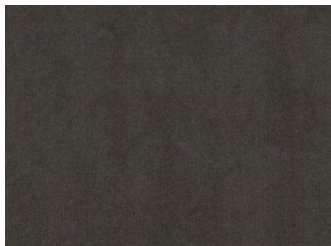
SAND



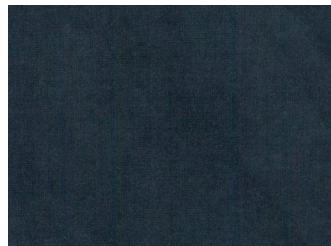
ANTHRACITE



DUSTY GREEN



DARK BROWN



NAVY BLUE



OKER



PETROL

# CHUNKY

CORDUROY

The timeless fabric.

Composition | 92% PES, 8% PAC

Martindale | 45 000

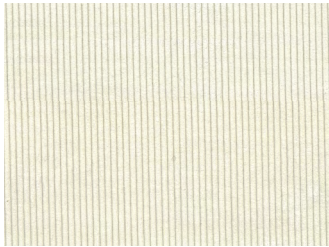
Lightfastness | 4

Pilling | 4-5

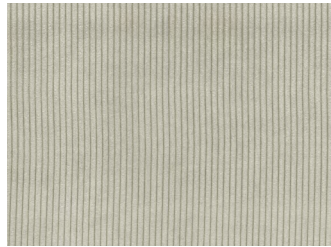


# LISBOA

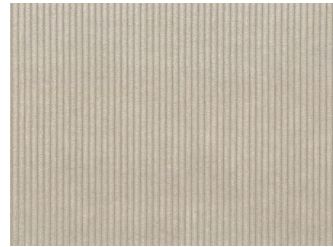
CAT 1



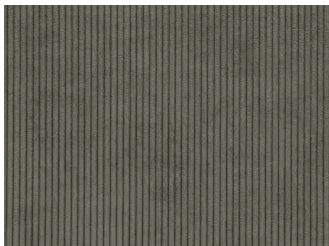
WHITE



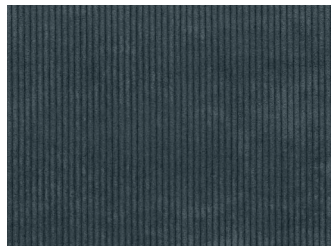
IVORY



SAND



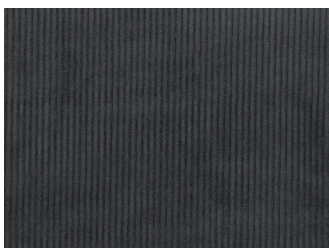
BROWN



DUSTY BLUE



ELEPHANT



ANTRACIT



VILMERS

Rest assured.

