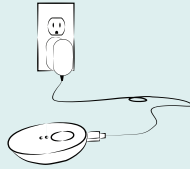




The Omnilux Contour NECK & DÉCOLLETÉ is hands-free and completely portable, meaning you can read a book, cook, clean, or watch TV instead of being bound to an outlet.

### STEP 1

Before using your device, charge the controller using the supplied cable and plug. The controller must be charged on its own, (not attached to the device) by the cable and plug that connects to the wall socket. Please do not charge your controller with the device still plugged in as this may cause damage to the battery.

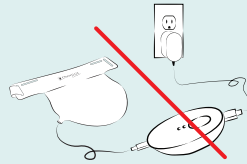


### STEP 2

Once fully charged (all 3 charging lights will be illuminated) detach the controller from the charging cable.



**NOTE:** Please do not charge the controller with the device still connected. The Omnilux Contour NECK & DÉCOLLETÉ will not work if plugged into the controller while it is charging and this can cause damage to the device & battery over time.



### STEP 3

Connect the device to the other end of the controller. To reiterate, the Omnilux Contour NECK & DÉCOLLETÉ is operated by the supplied controller, making it completely portable.



### STEP 4

The device is designed to sit comfortably on your neck and chest. It should feel secure but not overly tight.



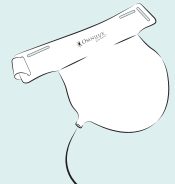
### STEP 5

Activate the controller by pressing down on the button for one second. Each session is 10 minutes and your device will automatically shut off when the treatment is complete. We recommend using at least 3-5 times per week for 4-6 weeks and then continued maintenance thereafter for all natural, radiant-looking skin!



### STEP 6

Store your device flat if possible and clean treatment surface as needed with a damp cloth or a nonirritating water-based wipe. For deeper cleaning, wipe gently with 70% alcohol.



**Any questions?** Scan the QR Code on your smartphone or visit [omniluxled.com/apps/help-center](https://omniluxled.com/apps/help-center) for more detailed instructions on how to get the most from your Omnilux Contour NECK & DÉCOLLETÉ.

[omniluxled.com](https://omniluxled.com)

