

# CMC5RK

## Compressor Repair Kit Instructions



Your kit includes two diaphragm assemblies (right and left) to return your air pump back to proper performance. Over time the air pressure and output will drop which typically requires replacement of the diaphragms. These are considered normal “wear” items and can be done on a regular basis (every 6 to 12 months) or once loss of output is observed.

- Disconnect the unit from the outlet and remove any air hoses
- Place hardware and screws in order that they are removed



**WARNING:** Electrical shock hazard. Disconnect electrical supply before performing maintenance. Failure to follow these instructions may result in death, fire or electrical shock.



**WARNING:** Injury hazard. Product surfaces become very hot during operation, allow surfaces to cool before handling.

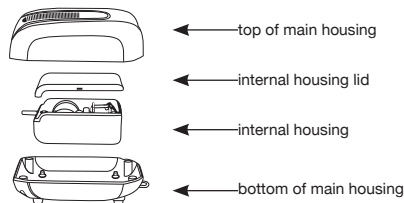


**WARNING:** Do not use oil to lubricate parts. CAS compressors use an oil less design. Using oil may result in failure of the unit.

**Before beginning you will need:**

1. #1 Phillips screwdriver
2. Flat head screwdriver
3. Clean work space

### CMC5 - Dual Outlet Compressor



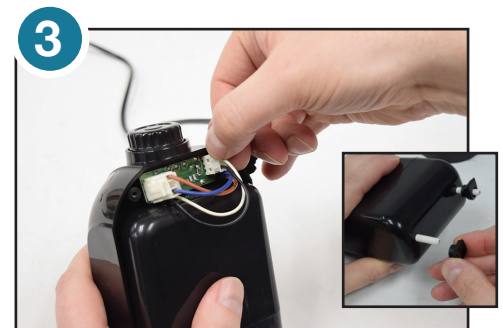
### Diaphragm Replacement Instructions for CMC5 - Dual Outlet Compressor used in CAS2 Kit



1. Unplug unit and remove four screws from bottom of main housing.



2. Remove bottom of main housing to access internal housing.



3. Carefully disconnect the electrical connector. This will be the connector with the black and white wires. Once disconnected the internal housing section can be removed. Remove outlet bushings.



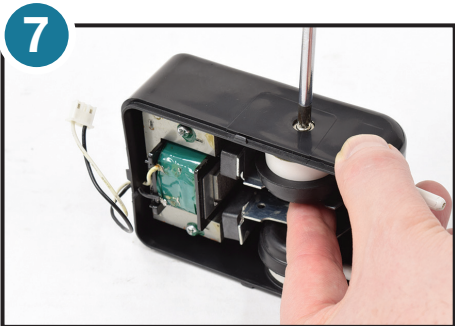
4. To remove the housing cover, squeeze the back section while alternately squeezing and pulling the front section off. Use a flat screw driver with a twisting motion (avoid prying) to loosen front cover and then pull front section off.



5. Remove the back cover section while carefully guiding the electrical connector through the rectangular hole.



6. To remove lid of internal housing, squeeze longer sides tightly to create a small space for a flat screw driver. Use a slight twisting motion with the screw driver to release the lid of the internal housing.



7. Remove screws from side of internal housing to remove diaphragm assemblies from unit. Inspect magnets and clean if needed.



8. Remove diaphragm assemblies from unit. Remove the black seals shown in the inset photo and press them into the sides of the new diaphragm assemblies. Install new diaphragm assembly by holding it securely to the side while tightening screw.



9. Replace the lid of internal housing.



10. Guide electrical connection through the hole in back housing cover and reinstall front cover.



11. Reinstall outlet bushings and place internal housing into base. Reconnect electrical connection.



12. Reinstall bottom housing and secure with four screws.

## Troubleshooting

Loss of air output but unit is running:

- Check that the flow control is turned up.
- Check to make sure lines are not kinked or plugged.
- Inspect the air stones to ensure they are clean. Replace or clean as necessary.
- Inspect diaphragms. Replace as necessary.

Unit is not running:

- The GFCI may have tripped.

## Replacement Parts

Air stone: part # CRAS1

Check valve: part # CASCV



(800) 448-3873 • Grant, MI 49327

www.easypro.com

9336 • 4/19