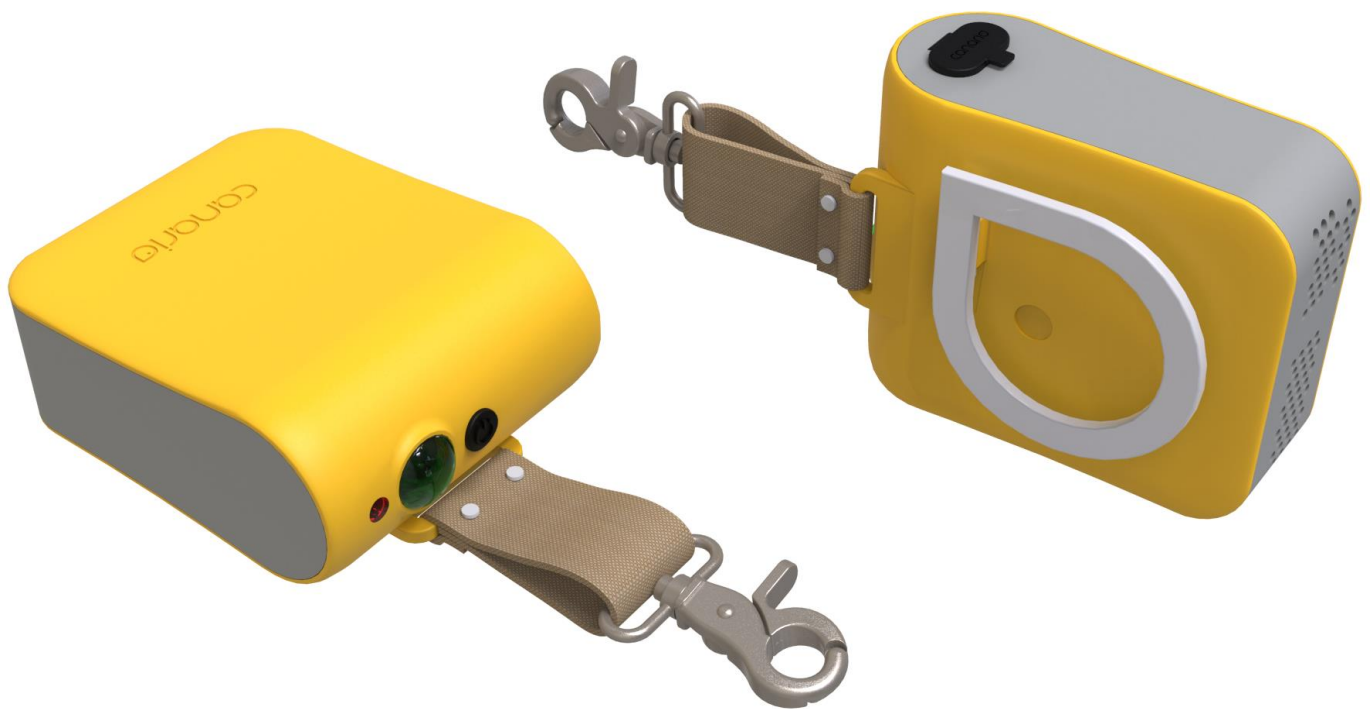




Canario

Air Monitoring System



Quick Reference Guide

Contacting Canario Ltd.

- Address: Ramat-Ishay P.O.B. 483
- Phone: + (972) 4-6725050
- Mobile: + (972) 523766820
- E-mail: info@canario.ai
- Website: www.canario.ai
- Proprietary Information

Canario Ltd (herby "vendor"). All rights reserved. This document is the property of the vendor. No part of this document may be reproduced, stored in retrieval system or transmitted in any form or any means, electronic, mechanical, photocopying, recording or otherwise without prior written permission from the vendor.

Warranty

Dear valuable customers,

We thank you for your purchase and hope that the Canario will serve you for the years to come.

Please visit our website at www.canario.ai for the complete terms of warranty.

What is in the Box?

- Canario
- Type-C to USB charging cable
- Quick Reference Guide (this document)



Application Installation

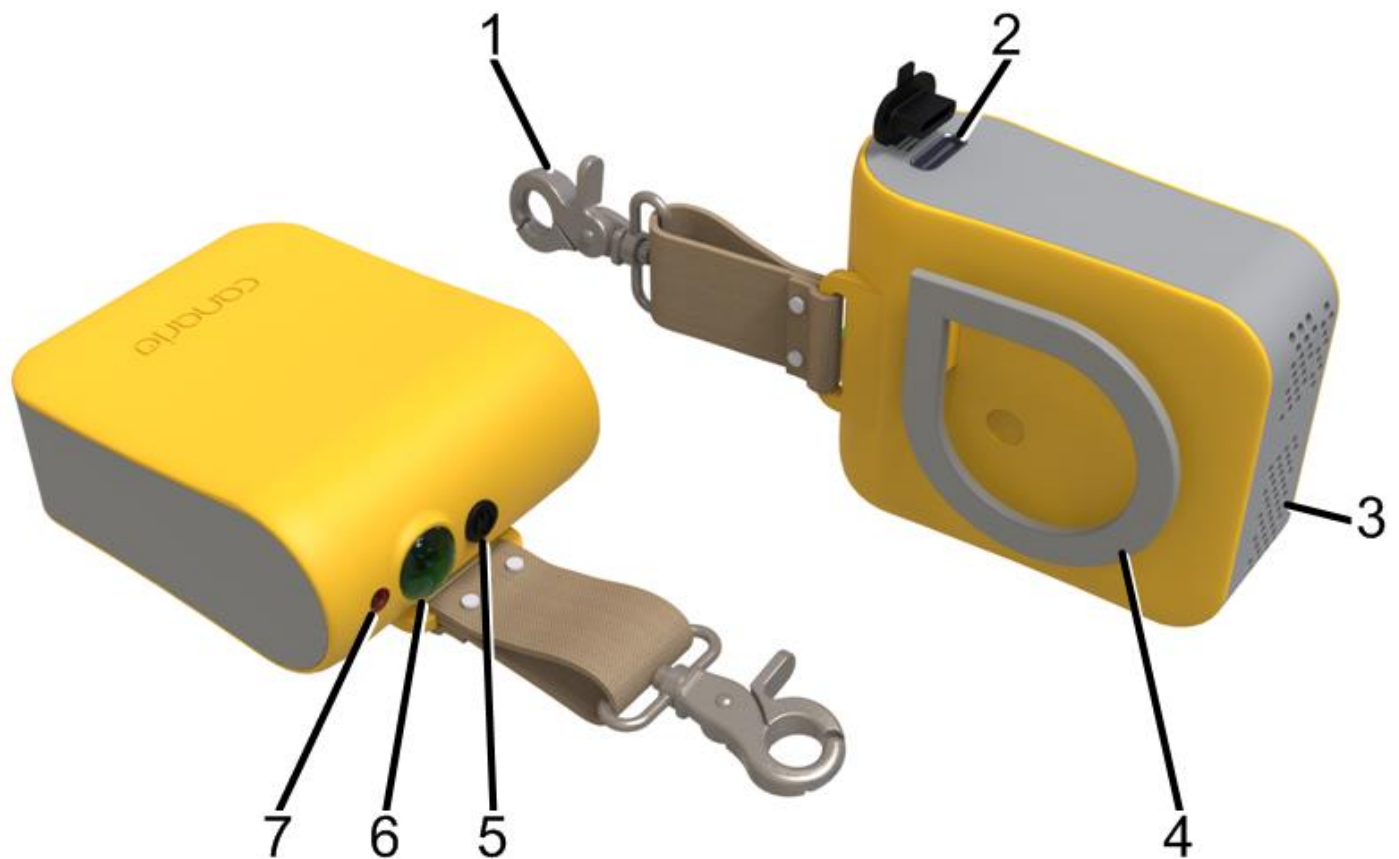
- Scan the QR Code to open the website.
- Download and install the Canario app to your smartphone.



The  icon added to your app list.

Physical Description

1. Hook
2. Type-C Connector
3. Air Inlet: should always be exposed to the open air
4. Hanger
5. Power ON/OFF and Manual Status Check Pushbutton
6. UV Detection Lens
7. Status and Power Indicator



Charging the Canario

- First, connect the Canario to your charger (or PC) using the supplied cable. The Status and Power Indicator is blinking white (the Canario is supplied uncharged).
- The Canario is fully charged when the Status and Power Indicator is solid white.

Turning ON and Pairing

- Press on the Power ON/OFF pushbutton for five seconds. The Status and Power Indicator is blinking white and then turns solid white.
- Launch the Canario app. Within a few seconds, the Canario is paired with the app:



Detections

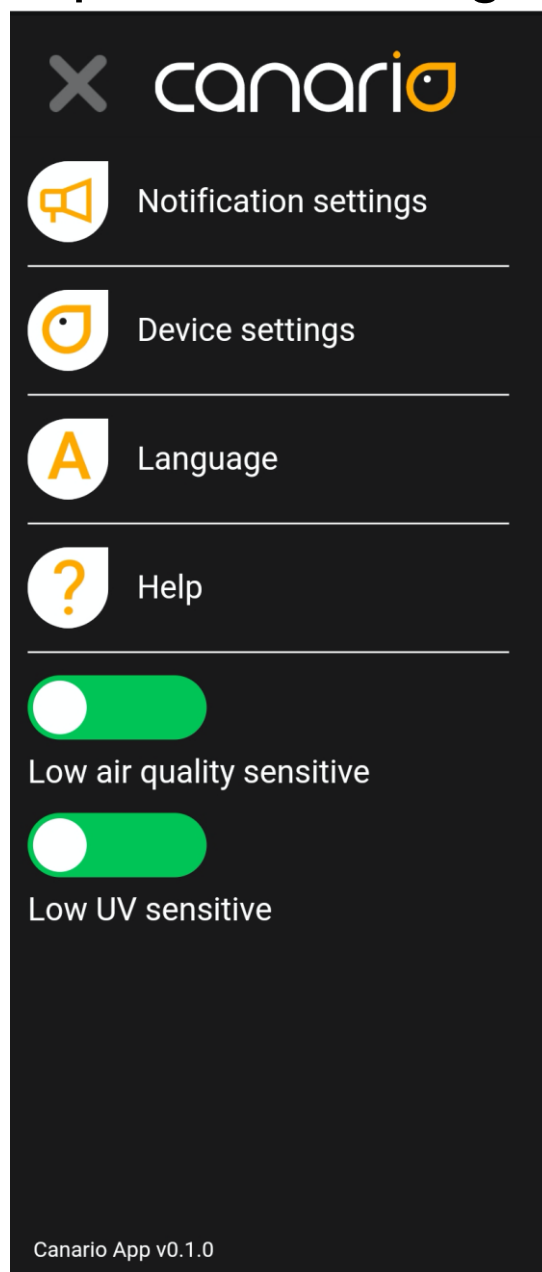
Once paired, the Canario starts sampling.
Possible detections (examples):



Sensitivity Preferences

You may set your Canario sensitivity:

➤ Press  to open the Settings menu:



➤ Set the sensitivity of the **Air Quality** and **UV**:



Low



Medium



High

Handling

- The Canario is not sealed. Do not expose to any liquids.
- While in use, ensure that the Canario lower side is exposed to the open air.

Energy Save Mode

Pressing on the Power ON/OFF pushbutton for five seconds enters the Canario into Power Save Mode. The Status and Power Indicator is blinking white. Re-pressing exits the Save Mode.

Troubleshooting

When the Canario is malfunctioned, the Status and Power Indicator is solid red and the application displays an error code.

Contact Canario Ltd. for assistance.

FAQs

Refer to www.canario.ai website.

Turning OFF the Canario

Press on the Canario ON/OFF power for two seconds. The Status and Power Indicator blinks white for five seconds and then the Canario is turned OFF.