

# INSTRUCTION MANUAL

## Product Function Introduction

By connecting to your car's USB port, your factory wired CarPlay can be upgraded to wireless CarPlay, wired Android Auto can be upgraded to wireless Android Auto. It can be automatically connected when you get in the car. Let users say goodbye to the shackles of data cable.

## Connection Diagram

### CarPlay (Wireless connection)



### Android Auto (Wireless connection)



## LED Light Description

- Red status: Power indicator
- Green status: Successfully connected

## Product Specifications

- Power input: 5V=1A
- Power consumption: 0.75W
- Power output: 5V=1A
- Compatible resolution: adaptive

\*Please read the product manual carefully before you use the product, and keep it properly.

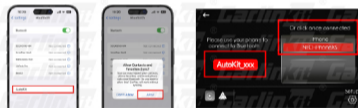
<https://carlinkitcarplay.com/>

## Supported Mobile Phones & Vehicles

- iPhone: iPhone 6 and above, iOS 10 and above version
- Android phones: support Android 11.0 and above version
- Supported car models: Car with original wired CarPlay or Android Auto function

## Wireless CarPlay Connection Steps (UI display)

- Plug the product into the USB port of your car
- Turn on your iPhone's Bluetooth and Wi-Fi, connect to the product's Bluetooth : **AutoKit\_XXX**
- Wait for a prompt on the car for CarPlay connection, click use CarPlay and enter the product's UI interface
- iPhone pop-up prompts, click Use CarPlay.



## Wireless Android Auto Connection Steps (No UI display)

- Plug the product into the USB port of your car
- Turn on your Android phone's Bluetooth and Wi-Fi, connect to the product's Bluetooth : **AutoKit\_XXX**
- Wait for your Android Phone to finish connecting, click on the "Android Auto" option in the car to enter wireless Android Auto.

Note: The vehicle may pop up "Android Auto" or Bluetooth connection prompt. Click to connect or start, when the wireless Android Auto is running, the Android phone will continue to establish a connection with the car's Bluetooth



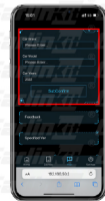
## Update Version Online/Feedback Problem

- Steps to enter the background
  - Insert the adapter into the car's USB port
  - iPhone/Android phone connected to product WiFi
  - Enter 192.168.50.2 with the browser that comes with your iPhone/Android phone to enter the background.  
(Note: please make sure your phone is connected to the mobile network)
- Click "Check Update" (Picture 1)
  - You can check whether it is the latest version
  - You can upgrade and update the latest version online  
(Note: Please contact customer service for version upgrade, self-upgrade may cause product damage)
- Click "Feedback" (Picture 1)
  - Enter your car's brand + model + year and report any product usage issues. (Picture 2)
  - Send the screenshot of the contents to customer service personnel
  - Once submitted, a technician will follow up and fix the problem

Take iPhone as an example



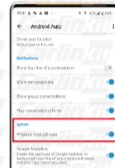
(Picture 1)



(Picture 2)

## Precautions for Android Auto

- Download and install the Android Auto APP from Google Play on your Android phone
- Check if your phone supports wireless Android Auto



## After-sales service

Dear user, thank you for using this product. In order to protect your rights and interests, we will provide you with high-quality after-sales service. You can enjoy one-year warranty service from the date of purchase (under normal use, the product itself is a failure caused by quality problems). Please keep this card properly, as the necessary proof of warranty service, the company reserves the right to interpret the after-sales service of this product.

### Warranty Card

Name	Purchase date
Phone number	E-Mail
Address	
Dealer's name/stamped	
Warranty content	



<https://carlinkitcarplay.com/>