

# QUALITY THREAD & NOTIONS

THREAD • HOOK & LOOP  
ZIPPERS • WEBBING • ELASTIC  
PLASTIC HARDWARE

SAME DAY SHIPPING  
QUALITY TESTED



## QTN BRANDS YOU KNOW AND TRUST



QTC "CONTRAST"



800-521-4308

CLICK ON LOGO ABOVE TO GO TO PRODUCT PAGE

QUALITYTHREAD.COM



# SOLARFIX® STAYS STRONG THROUGH CHEMICAL CLEANING & UV SUNLIGHT

New cleaning guidelines require higher quality thread that will hold up to harsh chemicals while maintaining its strength and appearance. SolarFix® PTFE thread has:

## Cleaning Chemical & Mildew Resistance

- Unaltered by any airborne chemical cleaners
- Safe to clean with most cleaners\*.

## Smooth Sewability

- Consistency of the thread results in smooth sewing experience, less stops

## Unique Manufacturing Process

- Holds back tack; improves sewing speed

## Interchangeable in Double Needle Sewing

- SolarFix® works in both needles; you only need to stock one thread

## Size Differentiation

- Color-coded spools to help differentiate sizing faster

## Large Inventory of Multiple Sizes and Colors

- In stock and ready to ship

\*Contact QTN for a list of safe cleaners that have been QTN Quality Assurance Tested.

SolarFix® is AY Tech LLC's registered trademark for synthetic fiber, thread, and yarn.

# We Are Everything Thread... and So Much More!

Quality Thread & Notions (QTN) was founded in 1922 and has provided personalized customer service and the highest quality products in Industrial & Commercial Thread, Zippers, Hook & Loop, Velcro, Elastic, Webbing, and Plastic Hardware.

To achieve this, we perform extensive testing that is unmatched by anyone in our industry to ensure our customers are consistently satisfied. As part of the QTN "Quality Assurance Program," we regularly test sew-down matches and reelings for color consistency, migration, and wet & dry crocking.

QTN's Customer Service Reps are happy to assist with placing orders or to help with questions about our products and services. When you call us, a live person will answer your call, not an automated system.

Our Product Managers ensure that we have what our customers need based on quality, price, and market trends. They are always available to share their knowledge and guidance with our customers.

The Warehouse Team uses a "Quality Check" processes to ensure your orders are accurate and on time. Each order is rechecked after being pulled to verify accuracy. Items are packaged securely so they arrive undamaged. They then schedule the best shipping method to guarantee you receive your order when you need it at the lowest possible cost.

And best of all, orders placed by 2:00 PM EST will ship that day!

Let us know how we can help.



qualitythread.com

## Ordering

Phone: 800-521-4308, 8AM-5PM, M-F (EST)  
 Fax: 440-349-2255  
 Email: orders@qualitythread.com

**ORDERS RECEIVED BEFORE 2PM EST ARE SHIPPED SAME DAY!**

## What's Inside

[CLICK ON PRODUCT NAME TO GO TO PAGE](#)

QTN Brands	4
QTN Quality Assurance	5
<b>Polyester Threads</b>	<b>6-13</b>
Sunguard+	6-7
Ultra Dee	8
QTC Polyester	9
Dabond	9
Anefil Poly	10
Banner Thread	10
Perma Core	11
Excell	11
Magic	11
Ultimax	12
Dual Duty	12
Astra	13
Epic	13

<b>Nylon Threads</b>	<b>14-19</b>
High-Spec	14-15
QTC Contrast	16
QTC Nylon	17
WonderThread Monofilament	17
Hand Sewing Thread	18
Star Handtuft Twine	18
Anefil Nylon	19
<b>Specialty Thread</b>	<b>2, 20-23, 34</b>
SolarFix® PTFE	2, 34
Hercules	20
Aramid Kevlar	20
Nymo UVR	21
QT Nylo	21
Polymatic	21
Vision	22
Guardian with Microban	23

<b>Notions</b>	<b>24-31</b>
Zippers	24-25
Hook & Loop	26-27
Webbing	28-29
Plastic Hardware	30
Elastic	31

<b>Resources &amp; Technical Data</b>	<b>32-34</b>
Thread Selection Guide	32
Ticket-Tex Chart	32
Ready-Wound Bobbins Sizing	32
Thread to Needle Size Chart	33
Needle Trouble Shooting Guide	33
Product Enhancements	34
Index	35



QTN BRANDS YOU KNOW AND TRUST

NYLON THREAD



QTC "CONTRAST"

QTC  
NYLON



QTC  
HANDSEWING



QT NYLO  
MONOCORD

POLYESTER THREAD



QTC  
POLY



BANNER THREAD

HOOK & LOOP



# QTN Quality Assurance Program

We are committed to providing the highest quality products available. To achieve this, we do extensive testing that is unmatched by anyone in our industry to ensure our customers are consistently satisfied with our products.

## QTN BRAND THREADS TESTING

### Sewing Thread Performance

Ply adhesion is critical to good sewing performance. Cone winding is inspected and analysis of lubricant and bonding is conducted.

### Bond Testing

Thread is twisted in opposite direction of bond to check twist strength.

### Color Matching

Each lot number is compared to previous reelings to confirm color consistency.

### Sew-Down Testing

Typically when lubricant is added, polyester thread appears darker. As the lube burns off during sewing the color lightens to match the fabrics. For this process we sew the thread into matching fabric to evaluate the "sewn-in" color, comparing it to previous production lots. Any color found outside our acceptable standards is rejected and new production is created with the necessary adjustments.

### Migration Testing

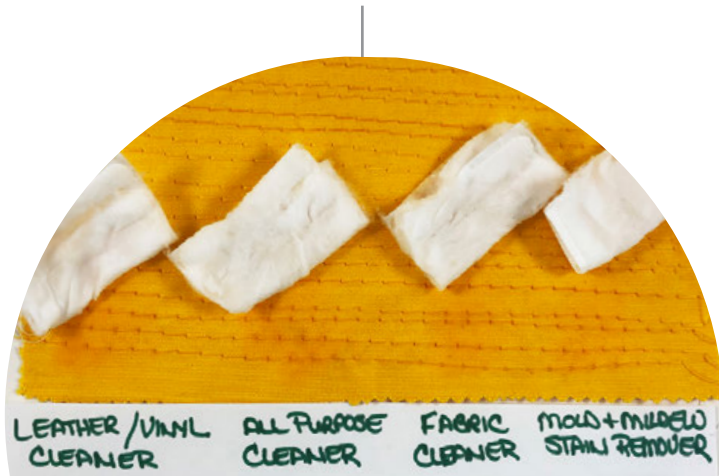
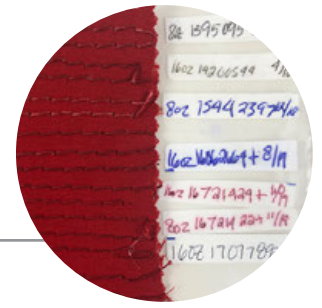
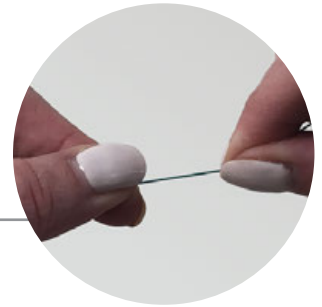
Test for color transfer after contact on vinyl for 24 hour period.

### Wet & Dry Crocking

Test if excess dyes come off dry thread when rubbed with dry tissue or napkin. Test if excess dyes come off thread soaked in water for 24 hours with dry tissue/napkin.

### Cleaning Chemical Testing

No color migration/fade after using many of today's popular cleaning chemicals.





**Now More Resistant to Cleaning Chemicals**



## Protection Against Sun, Chemicals & Seam Leakage

Sunguard+ is a UVR bonded polyester thread that goes through a state-of-the-art twisting, bonding and dyeing process to ensure the highest quality of colorfastness and performance. Added nanotechnology prolongs the life of the thread outdoors and helps meet anti-wick standards. Each production lot is tested to meet or exceed the QTN Quality Assurance standards.

### Features

- Maximum UV resistance
- Retains 15% more thread strength compared to other polyester threads
- Combats seam leakage with anti-wick finish
- Resistant to mold, mildew, chlorine and bromine
- Meets or exceeds Quality Assurance Standards (including color transfer and migration testing)
- Available to match 36 of the most popular shades of acrylic fabric
- Ready-wound bobbins available

### Applications

- Awnings, canvas and tents
- Umbrellas and outdoor shade structures
- Boat covers, enclosures and upholstery
- Pool and spa covers
- Tarps and covers
- Automotive interiors
- Outdoor furniture
- Marine products
- Transportation products
- Inflatables



**36 Colors Available!**





# Sunguard+ Stocked Sizes and Colors

Color	B92 4 oz	B92 8 oz	B92 16 oz	92 G Bobbins	92 M Bobbins	B138 8 oz	B138 16 oz	138 G Bobbins	138 M Bobbins
Natural White	3SUN4	3SUN8	3SUN16	378	376	3228	322	316	357
Oyster	3SUN4202QT	3SUN8202QT	3SUN16202QT	-	-	-	-	-	-
Parchment	3SUN4239QT	3SUN8239QT	-	-	-	-	-	-	-
Sand	3SUN4203QT	3SUN8203QT	3SUN16203QT	378203QT	376203QT	3228203QT	322203QT	-	-
Beaver	3SUN43187QT	3SUN83187QT	3SUN163187QT	3783187QT	3763187QT	32283187QT	3223187QT	-	-
Mocha	3SUN4L6582QT	3SUN8L6582QT	-	-	-	-	-	-	-
Beige	3SUN4204QT	3SUN8204QT	3SUN16204QT	378204QT	376204QT	3228204QT	322204QT	-	-
Saddle	3SUN4L6873QT	3SUN8L6873QT	3SUN16L6873QT	-	-	3228L6873QT	322L6873QT	-	-
Taupe	3SUN4227QT	3SUN8227QT	3SUN16227QT	-	-	-	-	-	-
Bay Brown	3SUN4205QT	3SUN8205QT	3SUN16205QT	378205QT	376205QT	3228205QT	322205QT	-	-
Sunglow	3SUN4206QT	3SUN8206QT	3SUN16206QT	-	-	3228206QT	-	-	-
Cardinal	3SUN4207QT	3SUN8207QT	3SUN16207QT	378207QT	376207QT	3228207QT	322207QT	-	-
Burgundy	3SUN4208QT	3SUN8208QT	3SUN16208QT	378208QT	376208QT	3228208QT	322208QT	-	-
Black Cherry	3SUN4209QT	3SUN8209QT	-	-	-	-	-	-	-
Cedar	3SUN4252QT	3SUN8252QT	3SUN16252QT	-	-	-	-	-	-
Deep Lilac	3SUN4211QT	3SUN8211QT	-	-	-	-	-	-	-
Sunflower	3SUN4212QT	3SUN8212QT	3SUN16212QT	-	-	3228212QT	-	-	-
Concord	3SUN4255QT	3SUN8255QT	-	-	-	-	-	-	-
Blue Wave	3SUN4213QT	3SUN8213QT	-	-	-	-	-	-	-
Pacific Blue	3SUN4214QT	3SUN8214QT	3SUN16214QT	378214QT	376214QT	3228214QT	32214QT	-	-
Mediterranean	3SUN4225QT	3SUN8225QT	3SUN16225QT	-	-	-	-	-	-
Dusk Blue	3SUN4215QT	3SUN8215QT	3SUN16215QT	-	-	3228215QT	-	-	-
Navy	3SUN4216QT	3SUN8216QT	3SUN16216QT	378216QT	376216QT	3228216QT	322216QT	-	-
Dk. Teal	3SUN4217QT	3SUN8217QT	-	-	-	-	-	-	-
Ocean Green	3SUN4218QT	3SUN8218QT	3SUN16218QT	-	-	3228218QT	-	-	-
Seafoam	3SUN4237QT	3SUN8237QT	-	-	-	-	-	-	-
Sage	3SUN4238QT	3SUN8238QT	-	-	-	-	-	-	-
Shamrock	3SUN4219QT	3SUN8219QT	3SUN16219QT	-	-	-	--	-	-
Forest Green	3SUN4220QT	3SUN8220QT	3SUN16220QT	378220QT	376220QT	3228220QT	322220QT	-	-
Pearl Grey	3SUN4221QT	3SUN8221QT	3SUN16221QT	378221QT	376221QT	-	-	-	-
Shark Grey	3SUN4222QT	3SUN8222QT	3SUN16222QT	378222QT	376222QT	3228222QT	322222QT	-	-
Med. Titanium	3SUN4L6937QT	3SUN8L6937QT	3SUN16L6937QT	-	-	-	-	-	-
Med. Opal	3SUN4L6677QT	3SUN8L6677QT	-	-	-	-	-	-	-
Charcoal	3SUN4223QT	3SUN8223QT	3SUN16223QT	378223QT	376223QT	3228223QT	322223QT	-	-
Graphite	3SUN4L6693QT	3SUN8L6693QT	-	-	-	-	-	-	-
SD Black	3SUN4B	3SUN8B	3SUN16B	378B	376B	3228B	322B	316B	357B

Bobbins sold in 1/2 gross boxes. 8oz and 16oz sold per spool. 4oz sold 4 per box.

Actual colors may differ from colors appearing on screen or printed paper. Color Cards\* are available for color matching.

Color Cards*	Description	Item #	Characteristics	Tensile	Elongation	Yds/Lb	Plies	Govt Size
Thread Color Card	Actual Wound Thread	3SUNCC	Sunguard B92	14 lbs	14%-17%	4200	4	F
Digital Color Card	Digital Color Match	3SUNPCC	Sunguard B138	21 lbs	14%-17%	2750	3	FF

# Ultra Dee® Bonded Continuous Filament Polyester Thread



Color	DB92 (1035 yds)	DB92 (4141 yds)	DB138 (2913 yds)	69 G Bobbins	92 A Bobbins	92 G Bobbins	92 M Bobbins	92 U Bobbins	138 G Bobbins	138 M Bobbins	138 U Bobbins
White	3UDLA924	3UDLA92	3UDLA138	371	362LA	340LA	318LA	386	316LA	357LA	370
Black	3UDLA924B	3UDLA92B	3UDLA138B	371B	362LAB	340LAB	318LAB	386B	316LAB	357LAB	370B
Beaver	3UDLA9243187	3UDLA923187	3UDLA1383187	-	-	340LA3187	318LA3187	-	316LA3187	357LA3187	-
Steel	3UDLA9248065	3UDLA928065	-	-	-	-	318LA8065	-	-	-	-



ULTRA DEE®

## Coats® Ultra Dee® Thread

is a high tenacity, continuous filament polyester thread that is engineered with innovative bonding technology to prevent the ply from untwisting even during intense manufacturing.

Ultra Dee® sewing thread has 20 – 33% higher retained strength compared with other standard lubricated sewing threads, leading to less seam breaks. It is specifically designed for demanding applications to deliver superior sewing performance for maximum productivity and excellent seam quality.

### Applications

- Dress and casual footwear
- Protective footwear
- Sports footwear
- Automotive seat trims
- Upholstery and furniture
- Luggage and leather goods
- General purpose marine applications
- Outdoor goods

Color	DB92 (1035 yds)
White	3UDLA924
Lt. Blue #6	3UDLA9246162
Chambray Blue	3UDLA924368
Bird's Egg Blue	3UDLA9241412
Empire Blue	3UDLA9246692
Copenhagen	3UDLA9246183
Rhonda Blue	3UDLA9243362
Blue	3UDLA9241036
Yale Blue	3UDLA9246007
Steam Blue	3UDLA9241472
Derby Navy	3UDLA9243583
Navy #1	3UDLA9246085
Navy Blue	3UDLA9243907
Bishop Red	3UDLA924107
Scarlet	3UDLA9242003
Malaga	3UDLA9242328
Spring Wine	3UDLA9241328
Rubytone	3UDLA9241127
Double Ripe Raisin	3UDLA9243731
Pink #3	3UDLA9242107
Rose Damask	3UDLA9245391
Purple	3UDLA9247007
Nude	3UDLA92411
Toboggan	3UDLA9243024
Brique	3UDLA9241173
Chinese Rust	3UDLA9241239
Terra Cotta	3UDLA9244285
Gold	3UDLA9244815
Honey	3UDLA9244135

Color	DB92 (1035 yds)
Ashes	3UDLA9243512
Pebble Beige	3UDLA9241161
Mastic Beige	3UDLA9241194
Sand	3UDLA9243475
Nu Suntan	3UDLA92494
Beaver	3UDLA9243187
Velvet Frog	3UDLA924659
Gold Brown	3UDLA9243285
Scarab	3UDLA9245167
Azure	3UDLA924838
May Green	3UDLA9245839
Jade	3UDLA9245064
Hunter	3UDLA9245007
Evergreen	3UDLA9245495
Spruce	3UDLA9243543
Forestry Green	3UDLA9242
Olive Drab	3UDLA924613
Colonial Brown	3UDLA9241128
Dk. Mahogany	3UDLA924306
Seal	3UDLA9243928
Brown	3UDLA9243295
Chestnut	3UDLA9243925
Med. Titanium	3UDLA9243378
Steel	3UDLA9248065
Nickel	3UDLA9248115
Gray Black	3UDLA9243787
Graphite	3UDLA9248965
Dk. Quartz	3UDLA9243597
Black	3UDLA924B

Characteristics	Tex	Avg Yards/Lb	Break Strength	Plies	Govt Size	Elongation	Recommended Needle Size
Ultra Dee DB92	T90	4200	14 lbs	4	F	14%-17%	20/22
Ultra Dee DB138	T135	2750	21 lbs	3	FF	14%-17%	22/24

Bobbins sold by the gross.

Top thread sold by individual spools.



# QTC Polyester Bonded Polyester Thread



QTC Polyester Thread uses carefully selected dyes, ensuring maximum UV resistance. High volume, competitively priced with excellent quality.

### Features

- Exceptional resistance to chlorine, bromine, mildew and UV rays
- Anti-wick finish
- Made in the USA of the highest quality polyester fibers available
- All threads manufactured in ISO certified mill
- Meets or exceeds the QTN Quality Assurance Standards

### Applications

- Awnings, canvas and tents
- Umbrellas and outdoor shade structures
- Tarps and covers
- Outdoor furniture
- Marine products

Spools are approximately 16 oz, sold per net pound.  
Case Pack (16 oz) = 40 spools  
10 spool minimum per color/size



	B69 (T70)	B92 (T90)	B138 (T135)	B138 (T135) Right Twist
Color	16 oz	16 oz	16 oz	16 oz
White	369CA	368201Q	336	336RT
Black	369CAB	368B	336B	SO

Characteristics	Yds/Spool	Break Strength	Plies	Govt Size	Elongation	Recommended Needle Size
QTC Polyester B69/T70	6000	11 lbs	3	E	14%-17%	18
QTC Polyester B92/T90	4200	14 lbs	4	F	14%-17%	20/22
QTC Polyester B138/T135	2750	21 lbs	3	FF	14%-17%	22/24

# Dabond® Bonded & Twisted Continuous Filament Polyester Thread



Coats® Dabond™ is a premium polyester brand created with innovative bonding technology. It is a bonded and twisted continuous filament polyester thread designed to provide resistance against harsh weather conditions.

### Features

- Can withstand UV degradation in all outdoor applications exposed to marine water and sunlight
- Unique bonding technology that safeguards against ply untwisting in zig zag, and can sew through many layers of heavily finished fabric
- Dual level lube finish for needle heat protection and smooth sewing
- Excellent bleach, mildew and rot resistance

### Applications

- Sailmaking
- Boat tops
- Flags
- Tents and awnings
- Canvas and tarps
- Inflatables/hot air balloons
- Marine lift slings and tie-downs
- Military supplies
- Applications requiring chlorine bleach-fastness

Spools are approximately 16 oz, sold per net pound.  
Case Pack (16 oz) = 40 spools  
10 spool minimum per color/size



dabond



	B92 16 oz	B138 16 oz	B207 16 oz	B207 Right Twist 16 oz
Color	16 oz	16 oz	16 oz	16 oz
White Anti-Wick	330	SO	3DA207	3DA207RT
SD Black Anti-Wick	330B	SO	SO	SO
White (Not Anti-Wick)	3DA92	SO	SO	SO

Characteristics	Yds/Spool	Break Strength	Plies	Govt Size	Elongation	Recommended Needle Size
Dabond B92	4200	14 lbs	4	F	14%-17%	20/22
Dabond B138	2750	21 lbs	3	FF	14%-17%	22/24
Dabond B207	1840	30 lbs	3	3/C	14%-17%	24

# Anefil Poly® Twisted Multifilament Polyester Sewing Thread



A twisted multifilament polyester sewing thread, ideal for sewing a wide range of products. In addition to good overall performance and excellent seam strength, the twisted multifilament construction provides for superior sewability.



### Features

- Better resistance to UV exposure than nylon or polyamide sewing thread
- Good seam strength
- Consistent diameter and excellent ply security when bonded
- Superior sewability
- Low moisture regain
- Bonded or soft finish

### Applications

- Automotive
- Footwear
- Luggage and handbags
- Outdoor products

Color	B46 (T45) 16 oz	B69 (T70) 32 oz	B92 (T90) 16 oz
Black	326BLACK	SO	305B
White	326WHITE	36932	305

Sold by net weight.

SO=Special Order

Characteristics	Tex	Yards/Lb	Break Strength	Plies	Govt Size	Elongation	Recommended Needle Size
Anefil Poly B46	T45	9250	7 lbs	3	B	14%-17%	17
Anefil Poly B69	T70	6000	11 lbs	3	E	14%-17%	18
Anefil Poly B92	T90	4200	14 lbs	4	F	14%-17%	20/22

# Banner Thread Locked Filament Polyester Sewing Thread



This locked filament polyester sewing thread is perfect for high speed, multi-directional and double needle machines. Banner Thread offers significant cost savings over traditional nylon and polyester thread.



### Features

- Low shrinkage for less seam pucker
- Oval construction allows for smooth seam appearance
- Excellent seam strength retention
- Special lubricant provides superior needle-heat resistance



Color	T60 18,000 yds	T90 12,000 yds
White	869	867

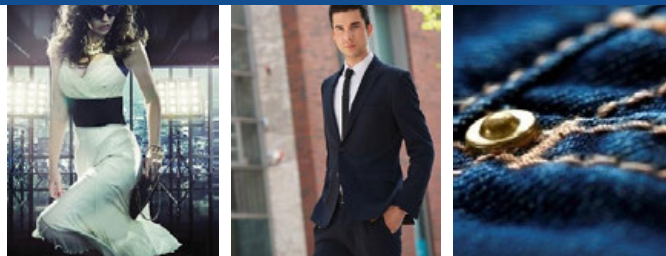
### Applications

- Banners
- Flags
- Sporting goods
- Headwear
- Bedding

Sold by the spool.

Characteristics	Typical Loop Strength	Break Strength	Plies	Recommended Needle Size	Dry Shrinkage
Banner T60	9.5	6.8 lbs	1	16-18	2.5%
Banner T90	13.0	10.2 lbs	1	20-22	3.0%

# Perma Core® Poly-Wrapped, Poly-Core Sewing Thread



A&E's Perma Core® is a premium core spun sewing thread manufactured with a continuous filament polyester core and polyester staple wrap for most sewing applications. The core spun construction delivers a thread with a higher strength and sewing performance over staple spun products, allowing for the use of smaller thread sizes.

### Features

- Higher tensile strength over spun polyester threads
- Excellent sewability and ply security
- Recommended for automatic sewing machines (multi-directional)
- Good seam strength and abrasion resistance
- Very good color fastness

**Applications:** Denim, workwear, ladies wear, menswear, activewear, personal protective equipment, intimate apparel, swimwear, bedding, mattresses, furniture, etc.

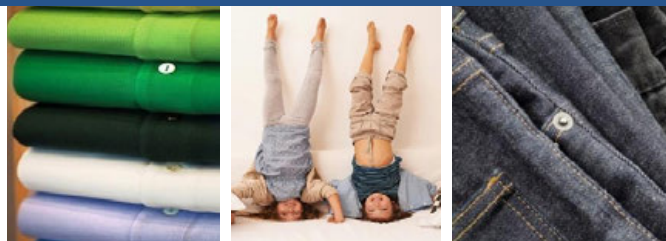


Sold by the spool.  
SO=Special Order

	T24	T30	T40	T60
<b>Color</b>	6,000 yds	6000 yds	6,000 yds	6,000 yds
Black	SO	103B	104B	162B
White	110	103	104	162

Characteristics	Break Strength	Recommended Needle Size
	Perma Core T24	2.77 lbs
Perma Core T30	3.60 lbs	80/12
Perma Core T40	4.55 lbs	90/14
Perma Core T60	7.40 lbs	110/18

# Excell® 100% Polyester, Staple Spun Sewing Thread



A&E's Excell® is a 100% polyester staple spun sewing thread twisted and finished for optimum sewing performance. For use in general sewing, light and heavy weight garments, Excell® is an ideal thread for multiple applications where traditional staple spun polyester is required. Provides excellent seam strength and sewability across multiple operations.

### Features

- Robust manufacturing techniques deliver a stronger thread with fewer imperfections
- Excellent seam strength
- Good chemical resistance
- Good sewability across multiple operations
- Good colorfastness

**Applications:** Light weight garments, heavy weight garments, personal protective equipment, mattresses, footwear, etc.



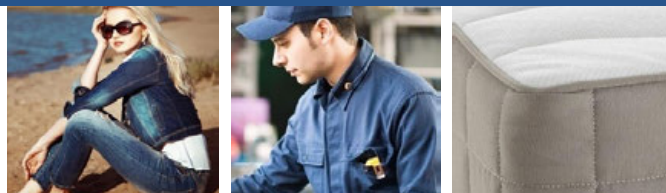
Sold by the spool.

Characteristics	T27	T40
	6,000 yds	6,000 yds
Black	226B	252B
White	226	252

Characteristics	Break Strength	Recommended Needle Size
	Excell T27	2.12 lbs
Excell T40	3.22 lbs	90/14

# Magic® Air-Entangled Seaming Thread



A&E's Magic® is an air-entangled 100% polyester sewing thread designed as a high performance alternative to spun polyester threads. Magic® creates a lower profile seam reducing potential for surface abrasion, ideal for a variety of sewing applications.

### Features

- High initial modulus for excellent loop formation
- Excellent seam strength
- Low profile minimizes surface abrasion
- Very good color fastness
- Sewable on a wide range of equipment including high speed machines.

**Applications:** Denim, mattress, workwear, home furnishings, banners, flags.



Sold by the spool.  
SO=Special Order

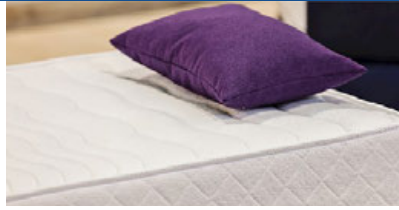
Characteristics	T40	T40	T60	T90
	12,000 yds	18,000 yds	12,000 yds	6,000 yds
Black	SO	SO	865B	867B
White	863	893	868	867

Characteristics	Plies	Typical Loop Strength	Break Strength	Recommended Needle Size	Dry Shrinkage
	Magic T40	1	6.5	4.5 lbs	14-16
Magic T60	1	9.5	6.8 lbs	16-18	2.5%
Magic T90	1	13.0	10.2 lbs	20-22	3.0%

# Ultimax

## Locked Filament Polyester



Ultimax uses a sophisticated air jet technology to convert filament yarns to a multi-purpose sewing thread that eliminates the need for spinning and twisting processes. This enables Coats Ultimax to exhibit excellent uniformity, regularity and freedom from imperfections.

### Features

- Provides uniform stitch appearance.
- Unique construction gives excellent frictional properties where needle heat is high.
- Precision wound kingspool.
- Coats Ultimax is not twisted and therefore cannot “untwist” during multi-directional sewing. This feature enhances sewing ability on demanding sewing applications.
- Excellent uniformity and regularity makes Ultimax well suited to the requirements of modern high speed sewing machines.
- Certified to Öko-Tex Standard 100, class I, the most stringent class covering textile items for babies and toddlers.

### Applications

- Bedding and mattress serging, flanging and border stitching
- Banners and flags



SO=Special Order  
Sold by the spool.

	T40 12,000 yds	T60 12,000 yds	T60 18,000 yds	T90 12,000 yds
Color				
Black	SO	859B	862B	SO
Natural	861N	SO	862N	890N

Characteristics	Typical Loop Strength	Break Strength	Plies	Recommended Needle Size	Dry Shrinkage
Ultimax T40	6.5	4.5 lbs	1	14-16	2.0%
Ultimax T60	9.5	6.8 lbs	1	16-18	2.5%
Ultimax T90	13.0	10.2 lbs	1	20-22	3.0%

# Dual Duty

## Polyester Corespun with Cotton Wrap



Coats Dual Duty is a premium quality corespun thread that combines a high tenacity polyester filament core with a natural cotton cover. The filament core offers excellent strength and durability, while the long staple cotton wrap ensures excellent sewing performance and protects the core from needle heat.

### Features

- The high tenacity polyester filament core allows the use of finer thread sizes improving seam appearance without compromising seam strength.
- Excellent wash-down characteristics make Dual Duty ideal for denimwear and jeans.
- Outstanding abrasion resistance for demanding jeans and workwear applications.
- Certified to Öko-Tex Standard 100, class I, the most stringent class covering textile items for babies and toddlers.

### Applications

- Classic denimwear and jeans
- Heavy duty outdoor wear and cargo pants
- For soft, natural feel seams on fine cotton fabrics
- High speed sewing operations for towels and home furnishings



SO=Special Order  
Sold by the spool.

	T40 6,000 yds	T60 6,000 yds	T150 5,000 yds
Color			
Black	160B	130B	150B
White	160	130	SO
Natural	160U	130U	150N

Characteristics	Ticket	Length	Break Strength	Elongation	Needle Size Metric
Dual Duty T40	75	5000m	4.18 lbs	18%-24%	90 - 100
Dual Duty T60	50	5000m	6.38 lbs	18%-24%	100 - 120
Dual Duty T150	20	5000m	16.07 lbs	20%-26%	120 - 140

# Astra™ Staple Spun Polyester



Coats Astra is a best-in-class staple spun polyester (SSP) thread with significantly higher sewing performance compared with regular SSP threads. It is an exceptional thread of its type with dependable sewing performance where cost matters.

### Features

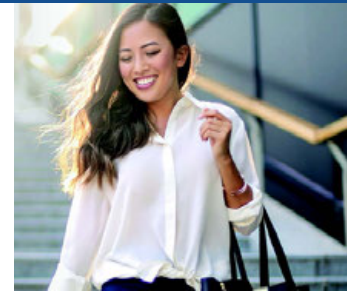
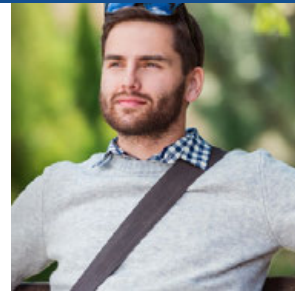
- Astra makes for durable, long-lasting seams which look good throughout the sewn product lifetime.
- Sewers prefer Astra due to reduced machine downtime, higher productivity and consistent sewing performance compared with regular SSP threads.
- Certified to Öko-Tex Standard 100, class I, the most stringent class covering textile items for babies and toddlers.

### Applications

- Knitwear
- Wovens
- Shirts and blouses
- Jackets
- Children's apparel
- Dresses
- Workwear
- Economy denim
- Underwear

### Characteristics

Astra T40



	T40 6,000 yds
Color	
Black	287B
White	287

Sold by the spool.

Characteristics	Ticket	Break Strength	Elongation	Needle Size Metric
Astra T40	75	3.37 lbs	13%-20%	90-110

# Epic Polyester Corespun with Polyester Wrap



A versatile polyester-wrapped corespun needle thread with a polyester filament core where the fibre and filament combine to provide high tensile strength.

### Features

- Epic is a stronger, more durable, precisely engineered sewing thread whose superior performance results in benefits to customers such as lower repair rates, lower RTMs, lower irregulars and increased productivity.
- World-class quality, greater abrasion resistance and perfect color matching also explain why Epic is the thread of choice worldwide.
- Suitable for vegan requirements.
- The high strength core allows use of finer threads and needles without compromising strength compared to staple spun threads.
- Certified to Öko-Tex Standard 100, class I, the most stringent class covering textile items for babies and toddlers.

### Applications

- Fashion apparel
- Blouses and shirts
- Jackets and dress slacks
- Lingerie and swimsuits
- Uniforms and workwear
- Jeanswear
- Various leather articles

### Characteristics

Characteristics	Ticket	Break Strength	Elongation	Needle Size Metric
Epic T30	100	3.35 lbs	17%-22%	75 - 90
Epic T40	80	4.40 lbs	18%-24%	75 - 90
Epic T60	50	7.95 lbs	18%- 25%	100 - 120



	T30 6,000 yds	T40 6,000 yds	T60 6,000 yds
Color			
Black	183B	185B	SO
White	183	185	186

Sold by the spool.

SO=Special Order



**High-Spec**  
Bonded Nylon Thread



# Premium Bonded Nylon Sewing Thread



## High-Spec Thread is:

- Formulated with premium bond and colorfast dyes resulting in excellent performance
- Available in 36 popular shades, several of which have been custom-designed to match automotive OEM vinyl colors
- Tested to meet or exceed the QTN Quality Assurance Standards for every production lot

## Applications:

- Furniture
- Automotive upholstery
- Sport equipment
- Luggage and bags
- Banners and promotional material



Characteristics	Tex	Govt Size	Plies	Strength	Elongation	Yds/Lb
High-Spec B69	T70	E	3	11 lbs	22%	6,000
High-Spec B92	T90	F	3	16 lbs	22%	4,200



Color	B69 4oz	B69 8oz	B69 16oz	69 G bobbins	69 M bobbins	69 A bobbins	69 L bobbins	69 U bobbins	B92 8oz	B92 16oz	92 G bobbins	92 M bobbins	92 U bobbins
White 721Q	309	308	319	398	375	364	391	392	302	345	379	382	-
Natural 722Q	309722Q	308722Q	319722Q	398722Q	-	-	-	-	302722Q	-	-	-	-
Lemon 733Q	309733Q	308733Q	-	-	-	-	-	-	-	-	-	-	-
Black 744Q	309B	308B	319B	398B	375B	364B	391B	392B	302B	345B	379B	382B	399B
Beaver 745Q	309745Q	308745Q	319745Q	398745Q	3753187	3643187	-	-	302745Q	-	-	-	-
Beige 751Q	309751Q	308751Q	319751Q	398751Q	375751Q	-	-	-	302751Q	-	-	-	-
Taupe 752Q	309752Q	308752Q	319752Q	398752Q	-	-	-	-	302752Q	-	-	-	-
Toboggan 753Q	309753Q	308753Q	-	-	-	-	-	-	-	-	-	-	-
Orange 755Q	309755Q	308755Q	-	-	-	-	-	-	-	-	-	-	-
Brown 756Q	309756Q	308756Q	319756Q	398756Q	375756Q	-	-	-	-	-	-	-	-
Red 757Q	309757Q	308757Q	319757Q	398757Q	-	-	-	-	302757Q	-	-	-	-
Dk. Brown 758Q	309758Q	308758Q	319758Q	398758Q	-	-	-	-	302758Q	-	-	-	-
Lt. Brown 763Q	309763Q	308763Q	-	398763Q	-	-	-	-	302763Q	-	-	-	-
Yale Blue 764Q	309764Q	308764Q	319764Q	-	-	-	-	-	-	-	-	-	-
Navy 765Q	309765Q	308765Q	319765Q	398765Q	-	-	-	-	302765Q	-	-	-	-
Scarlet 766Q	309766Q	308766Q	319766Q	398766Q	375766Q	-	-	-	302766Q	-	-	-	-
Caramel 767Q	309767Q	308767Q	319767Q	398767Q	375767Q	-	-	-	302767Q	-	-	-	-
Leaf 770Q	309770Q	308770Q	-	-	-	-	-	-	-	-	-	-	-
Omni Blue 771Q	309771Q	308771Q	-	-	-	-	-	-	-	-	-	-	-
Slate 772Q	309772Q	308772Q	-	-	-	-	-	-	-	-	-	-	-
Blue Bell 775Q	309775Q	308775Q	-	-	-	-	-	-	-	-	-	-	-
Lt. Grey 776Q	309776Q	308776Q	319776Q	398776Q	-	-	-	-	-	-	-	-	-
Dk. Grey 777Q	309777Q	308777Q	319777Q	398777Q	375777Q	-	-	-	302777Q	-	-	-	-
Dk. Green 779Q	309779Q	308779Q	319779Q	398779Q	-	-	-	-	302779Q	-	-	-	-
Kelly Green 780Q	309780Q	308780Q	-	-	-	-	-	-	-	-	-	-	-
Dk. Jade 781Q	309781Q	308781Q	-	-	-	-	-	-	-	-	-	-	-
Carafe Green 783Q	309783Q	308783Q	319783Q	-	-	-	-	-	-	-	-	-	-
Charcoal 785Q	309785Q	308785Q	319785Q	398785Q	-	-	-	-	302785Q	-	-	-	-
Cream 786Q	309786Q	308786Q	319786Q	398786Q	-	-	-	-	-	-	-	-	-
Wine 787Q	309787Q	308787Q	319787Q	398787Q	-	-	-	-	302787Q	-	-	-	-
Dk. Claret 788Q	309788Q	308788Q	319788Q	-	-	-	-	-	-	-	-	-	-
Marine 790Q	309790Q	308790Q	319790Q	-	-	-	-	-	302790Q	-	-	-	-
Silver 792Q	309792Q	308792Q	319792Q	398792Q	-	-	-	-	302792Q	-	-	-	-
Saddle 793Q	309793Q	308793Q	319793Q	398793Q	-	-	-	-	302793Q	-	-	-	-
Opal 795Q	309795Q	308795Q	-	-	-	-	-	-	-	-	-	-	-
Med Graphite 796Q	309796Q	308796Q	319796Q	398796Q	-	-	-	-	302796Q	-	-	-	-
Assorted Colors	-	-	-	3HSABOB	-	-	-	-	-	-	-	-	-

Bobbins sold in 1/2 gross boxes. 8oz and 16oz sold per spool. 4oz sold 4 per box.

Actual colors may differ from colors appearing on screen or printed paper.

Color Cards\* are available for color matching.

Color Cards\*

Thread Color Card

Digital Color Card

Description

Actual Wound Thread

Digital Color Match

Item #

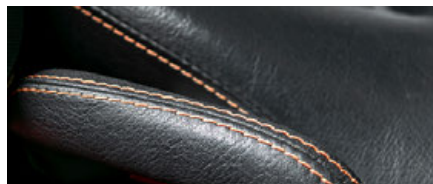
3HSCC

3HSPCC

# QTC "CONTRAST"



## Bonded Nylon Thread In Impactful Colors



QTC "Contrast" Thread is perfect for decorative seat trimming, accent stitching and much more. This thread will create a bold effect in any seam that is guaranteed to get noticed.



24 Colors Available!

### Features

- High quality bond that holds plies firmly together
- Made from high quality 6.6 nylon fiber
- Bold color line with 24 stocked colors
- Offers a high-end designer look

### Applications

- Automotive
- Furniture
- Accent stitching

Characteristics	Tex	Yds/Spool	Break Strength	Plies	Govt Size	Elongation	Recommended Needle Size
Contrast B277	T270	800	49 lbs	3	4/C	22%	24-26



Spools are approximately 8oz, billed per spool. Case pack = 48 spools. Sold as individual spools.

Actual colors may differ from colors appearing on screen or printed paper. Color Cards\* are available for color matching.

### Color



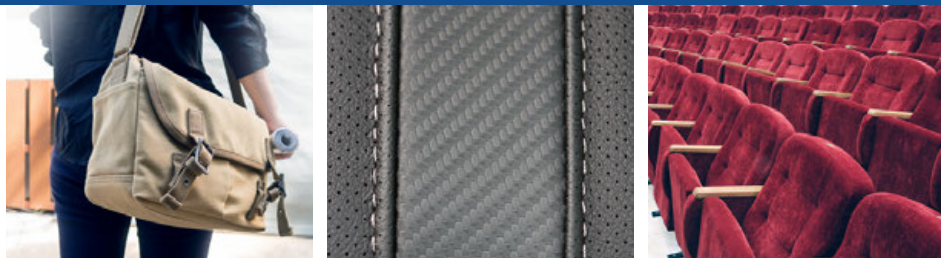
Color	B277 8oz
White 721Q	845
Natural 701Q	845701Q
Beige 23Q	845723Q
Tan 704Q	845704Q
Beaver 711Q	845711Q
Saddle 717Q	845717Q
Dk Brown 724Q	845724Q
Chinese Rust 714Q	845714Q
Nickel 720Q	845720Q
Grey 705Q	845705Q
Dk Grey 706Q	845706Q
Sd Black 744Q	845B
Scarlet 707Q	845707Q
Wine 708Q	845708Q
Toboggan 703Q	845703Q
Forsythia 709Q	845709Q
Hunter 716Q	845716Q
Lime 718Q	845718Q
Scarab 719Q	845719Q
Cathay Blue 715Q	845715Q
King Blue 702Q	845702Q
Dk Navy 725Q	845725Q
Oregon Purple 712Q	845712Q
Dk Pink 710Q	845710Q

### Color Cards\*

Color Cards*	Description	Item Nu
Thread Color Card	Actual Wound Thread	845CC
Digital Color Card	Digital Color Match	845PCC



# QTC Nylon High-Volume Bonded Nylon Thread



### Features

- Made of the highest quality 6.6 nylon fibers
- Good chemical and abrasion resistance
- Manufactured in ISO certified mill
- Meets or exceeds QTN Quality Assurance standards

### Applications

- Furniture
- Automotive upholstery
- Sport equipment
- Luggage and bags
- Banners and promotional material



	T90 (B92)	T135 (B138)
<b>Color</b>	<b>16 oz</b>	<b>16 oz</b>
Black	337B	328B
White	SO	328

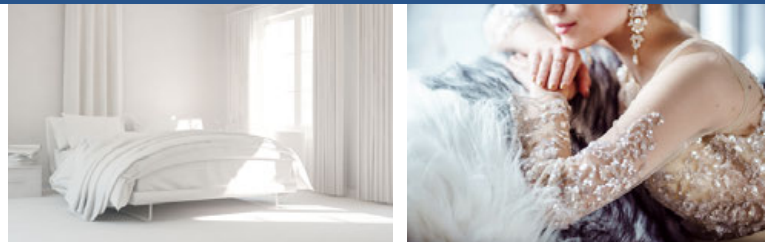
10 pound minimum per item, billed per net pound.

Case pack = 40 tubes.

SO=Special Order

Characteristics	Yield/Lb	Break Strength	Plies	Government Size	Elongation
QTC Nylon T90	4800	16 lbs	4	F	22%
QTC Nylon T135	3200	22 lbs	3	FF	22%

# WonderThread® Monofilament



### Features

- Clear appearance reduces the need for color matching
- Uses special resin blends for unmatched strength and softness
- UV resistant
- SN38 Stiff
- SN40 Soft

### Applications

- Drapery
- Pillows
- Bridal gowns & accessories
- Jewelry

SO=Special Order

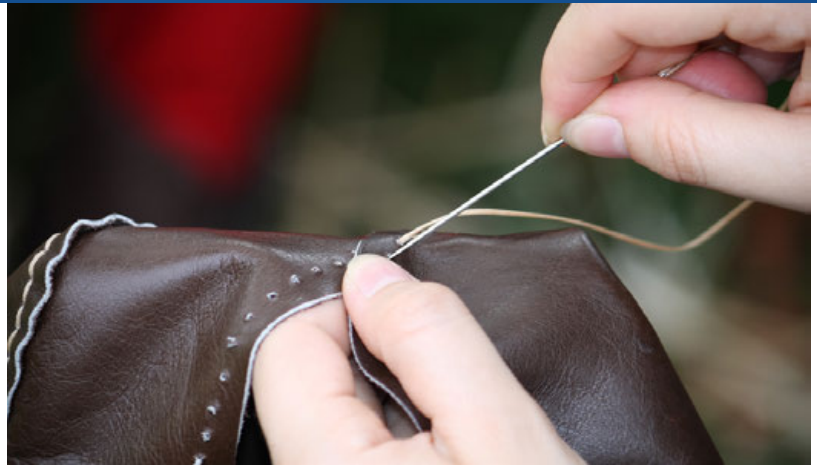


Canister & Refills	SN38 Canister	SN38 Refill	SN40 Canister	SN40 Refill
.004 (T8)	441N	SO	404N	414N
.005 (T14)	SO	SO	405N	SO
.006 (T18)	426N	447N	406N	SO
.007 (T27)	SO	SO	407N	417N
.008 (T35)	428N	SO	408N	418N
.009 (T45)	429N	SO	409N	SO
.010 (T50)	430N	444N	410N	SO
.011 (T60)	431N	445N	411N	SO
.012 (T80)	432N	SO	412N	SO

Characteristics	WonderThread		SN38			SN40		
	Denier	Yds/Lb	Tensile	Elongation @1.75 G/D	Shrinkage	Tensile	Elongation @1.75 G/D	Shrinkage
.004 (T8)	80	53500	1.35 lbs	5%-14%	0%-5%	0.87 lbs	8%-15%	0%-4%
.005 (T14)	130	34500	2.10 lbs	5%-14%	0%-5%	1.45 lbs	8%-15%	0%-4%
.006 (T18)	180	23900	3.00 lbs	5%-14%	0%-5%	2.21 lbs	8%-15%	0%-4%
.007 (T27)	250	17500	3.60 lbs	5%-14%	0%-5%	2.60 lbs	8%-15%	0%-4%
.008 (T35)	330	13400	4.80 lbs	5%-14%	0%-5%	3.00 lbs	8%-15%	0%-4%
.009 (T45)	400	10600	6.00 lbs	5%-14%	0%-5%	3.80 lbs	8%-15%	0%-4%
.010 (T50)	520	8600	7.40 lbs	5%-14%	0%-5%	5.00 lbs	8%-15%	0%-4%
.011 (T60)	630	7100	8.60 lbs	5%-14%	0%-5%	6.20 lbs	8%-15%	0%-4%
.012 (T80)	750	5950	9.80 lbs	5%-14%	0%-5%	7.30 lbs	8%-15%	0%-4%

SN 40 Bobbins	M Bobbins	G Bobbins	A Bobbins	L Bobbins
.006	SO	SO	SO	464N
.008	470N	SO	SO	465N
.010	472N	467N	466N	SO
.011	SO	462N	SO	SO
.012	471N	SO	SO	SO

# Hand Sewing Thread in Deep Rich Colors



**Hand Sewing Thread** is great for heavy leather work and steering wheel covers.





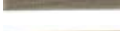







Characteristics	Tex	Yds/Spool	Break Strength	Plies	Government Size	Elongation
QTC Handsewing B207	T210	250	34 lbs	3	3/C	22%

Spools are approx 2oz, billed per spool.  
Orders are in multiples of 8 spools per color.

Actual colors may differ from colors appearing on screen or printed paper. Refer to High-Spec Color Cards\* available for color matching:

Color Cards*	Description	Item #
Thread Color Card	Actual Wound Thread	3HSCC
Digital Color Card	Digital Color Match	3HSPCC



Color	B207 2 oz
 White 721Q	840
 Natural 722Q	840722Q
 Beige 751Q	840751Q
 Beaver 745Q	840745Q
 Caramel 767Q	840767Q
 Saddle 793Q	SO
 Brown 756Q	840756Q
 Black 744Q	840B
 Med Graphite 796Q	840796Q
 Lt Grey 776Q	SO
 Navy 765Q	SO
 Red 757Q	840757Q

SO= Special Order



# Star Handtuft Twine

**Star Handtuft Twine** is great for many upholstery applications including button tufting, tying springs to webbing, etc.

Spools are 16oz., sold by the spool.  
Case pack is 24 spools.



Color	16oz	32oz
	Natural	810N

Characteristics	Break	
	Yds/Spool	Strength
Star Handtuft Twine	674	80 lbs

SO= Special Order

# Anefil Nylon® Twisted Multifilament Nylon Sewing Thread

A&E's Anefil Nylon® is a twisted multifilament nylon sewing thread ideal for sewing a wide range of products. Anefil Nylon® provides for good abrasion resistance and excellent seam strength. This sewing thread's twisted multifilament construction displays superior sewability.

### Features

- Excellent abrasion resistance
- Good seam strength
- Consistent diameter and excellent ply security when bonded
- Superior sewability



### Applications

- Automotive
- Safety and flotation
- Luggage and handbags
- Footwear



	<b>BT69 (T70)</b>	<b>B92 (T90)</b>
<b>Color</b>	<b>16 oz</b>	<b>16 oz</b>
Black	304B	383B
White	304	383

Characteristics	Yield/Lb	Break Strength	Plies	Government Size	Elongation
Anefil Nylon T70	6000	11 lbs	3	E	22%
Anefil Nylon T90	4800	16 lbs	4	F	22%

Sold by the pound.

## CHECK OUT QTN'S NOTIONS (PAGES 24-31)

HOOK & LOOP • ZIPPERS • WEBBING • ELASTIC • PLASTIC HARDWARE





# Heavy-Duty Polyester & Nylon Thread

## HERCULES

**Hercules** is designed for sewing applications that require muscle. Our unique blend of bond and lubrication enhances sewing performance in demanding applications.

### Applications

- Shade structures
- Architectural designs
- Cold air inflatables
- Truck tarps & covers
- Tents

### Nylon

Color	B207	B277	B346	B415
Black	3HN207B	3HN277B	SO	SO
White	3HN207	3HN277	SO	SO

### Polyester

Color	B207		B207 58		B277	B346	B415
	B207	Right Twist	Bobbins	Bobbins			
Black	3HP207B	3HP207BRT	3HP20758B	3HP277B	SO	SO	SO
White	3HP207	397	3HP20758	3HP277	3HP346	SO	SO

Characteristics	Tex	Yield/Lb	Break Strength	Plies	Govt Size	Elongation
Hercules B207	T210	2005	34 lbs	3	3/C	22%
Hercules B277	T270	1500	49 lbs	4	4/C	22%
Hercules B346	T350	1200	50 lbs	5	5/C	26%
Hercules B415	T400	1050	72 lbs	6	6/C	26%



Bobbins sold by the gross. Top thread sold in boxes of 10 spools (approximately 16 oz), billed by net weight.

SO = Special Order

## Aramid Kevlar®

Extremely strong, yet lightweight and durable.

This fiber is five times stronger than steel by weight. It also has good resistance to heat over short periods of time. Uses for Kevlar® are applications that have very high stress points, and need to withstand moderate heat.

### Features

- 100% Kevlar® is inherently flame resistant and doesn't ignite, melt or degrade in heat
- Flame and heat retardant
- Sewing performance and physical properties similar to nylon
- Good UV resistance
- Low stretch
- Very high tenacity



T70 sold per net pound.  
T90 sold per spool.

SO= Special Order

### Applications

- Firefighter clothing
- Welding gloves and aprons
- Heat shield tarpaulins
- Bullet proof vests
- Safety apparel



Color	T70	T90
	16 oz	6000 yds
Black	SO	663BLACK
Natural	661N	SO

Characteristics	Break Strength	
	Ticket	Yield/Lb
Kevlar T70	24/4	5700
Kevlar T90	20/5	4560

# Nymo™ UVR Nylon Monocord

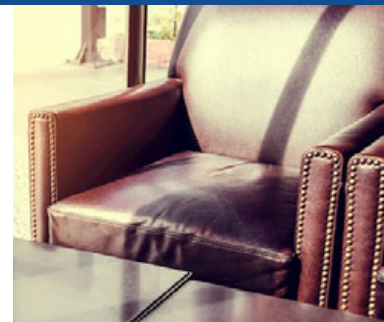


A nylon monocord sewing thread with superior sewing performance combined with excellent UV and abrasion protection. It is ideal for providing resistance against rain and harsh weather conditions. This makes it an excellent thread for outdoor use.

High-speed, multi-directional sewing creates thread rotation, causing traditional plied thread to untwist and fray. A unique, single-ply construction eliminates ply untwisting problems. A single ply of multi-filament nylon is lightly bonded at its point of contact, just enough to form a cohesive element without stiffening the product.



**Applications:** luggage, footwear, furniture, automotive.



	T70 16 oz	T90 16 oz	G Bobbins	M Bobbins
Color				
Black	350B	3NUVREE16B	355B	361B
White	350	3NUVREE16	355	361
Natural	SO	3NUVREE16N	SO	361N

SO = Special Order

Sold by the pound.

# QT Nylo Nylon Monocord

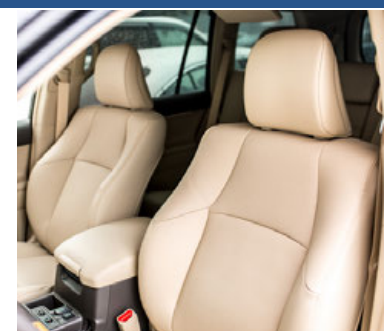


A low cost alternative product similar to Coats Nylo™.

- Ideal for high-speed multi-directional sewing.
- Excellent UV resistance for applications exposed to harsh conditions.
- Resists thread rotation in either left or right hand direction, providing excellent sewing on twin-needle machines.
- High creep resistance reduces seam pucker around stitch corners.



**Applications**  
Luggage, footwear, furniture, automotive.



	T70 16 oz	T90 16 oz	26 G Bobbins	37 M Bobbins
Color				
Black	3NYLO8XB	3NYLOEEB	3NYLOGB	3NYLOMB
White	3NYLO8X	3NYLOEE	3NYLOG	3NYLOM
Natural	SO	3NYLOEEN	3NYLOGN	3NYLOMN
Ashes	3NYLO8XASHES	SO	SO	SO
Sand	3NYLO8XSAND	SO	SO	SO

SO = Special Order

Sold by the pound.

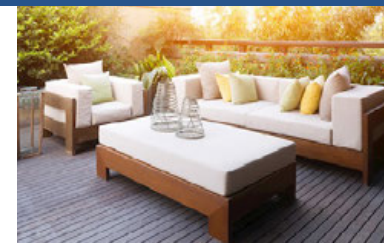
# Polymatic Polyester Monocord



A bleach and UV resistant polyester thread that is ideal for use in marine and outdoor applications. A strong and durable thread, Polymatic has a bonded construction which prevents the ply from untwisting during zigzag sewing operations.

**Applications:**

- Filtration
- Low denier light sails
- Light boat tops
- H4 automatic bobbin changers
- Multi-head embroidery
- Outdoor goods & sports equipment
- Quilting



	V125 16 oz
Color	
Black	3P125B
White	3P125

Sold by the pound.



# UV Resistant Embroidery Thread

**Vision** offers vibrant colors that don't fade out in the sun's harsh rays. Vision can withstand the intense exposure of UV while remaining true to its original color.

### Vision Feature

- UV Enhanced Polyester Embroidery Thread
- Little to no color loss after 500 hours of UV exposure
- Trilobal construction that creates high sheen colors
- Enhanced resistance to cleaning chemicals
- Constructed for high-speed sewing
- Made in the USA
- 24 brilliant colors stocked

### Applications:

- Marine seating and cover embroidery
- Outdoor umbrella embroidery
- Custom outdoor seating embroidery
- Outdoor cushion embroidery
- Commercial awning

L Style Bobbins sold in 134 yards, 144 per box.  
Spools sold in 5500 yard spools, 12 per box, per color.



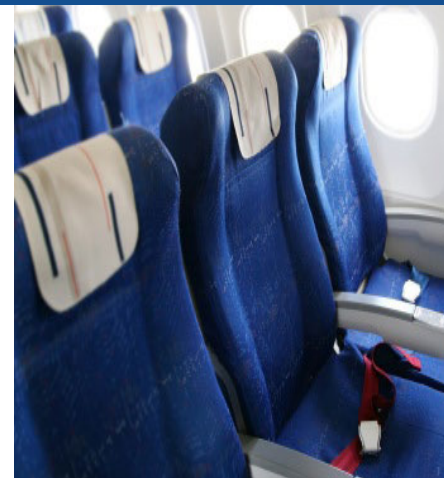
\* Actual colors may differ from colors appearing on screen or printed paper. Color Cards are available for color matching.

Color Cards*	Description	Item #
Thread Color Card	Actual Wound Thread	640CC
Digital Color Card	Digital Color Match	640PCC



Characteristics	Ticket Size	Denier	Plies	Break Strength	Elongation	Yds/Lb
Vision T21	40	242.30	2	2.73 lbs	20.44%	18425

Color	T21 4 oz	T16 Bobbins
White	-	381
Bright White 601Q	640	-
Sunrise 605Q	640605Q	-
Marigold 606Q	640606Q	-
Citrus 607Q	640607Q	-
Jockey Red 610Q	640610Q	-
Deep Red 611Q	640611Q	-
Merlot 612Q	640612Q	-
Chocolate 613Q	640613Q	-
Walrus 616Q	640616Q	-
Pistachio 651Q	640651Q	-
River Rock 620Q	640620Q	-
Sun Tan 609Q	640609Q	-
Pebble 622Q	640622Q	-
Sand 623Q	640623Q	-
Surf Blue 625Q	640625Q	-
Cape Cod 626Q	640626Q	-
Maritime 627Q	640627Q	-
Sapphire 628Q	640628Q	-
Teal 630Q	640630Q	-
Seagrass 631Q	640631Q	-
Nori Green 632Q	640632Q	-
Grey Wool 650Q	640650Q	-
Storm 635Q	640635Q	-
Sea Lion 615Q	640615Q	-
Cloud 637Q	640637Q	-
Black 644Q	640B	-



**GUARDIAN** with **MICROBAN** PROTECTION THAT LIVES ON

**THREAD WITH ANTIMICROBIAL PRODUCT PROTECTION**



Guardian with Microban® creates a zone of protection that prevents the growth of odor causing bacteria and microbes that would normally congregate and spread into places like a sewn seam. Fabrics can be wiped clean, but seams create crevices and areas that cannot be reached, making them the hardest areas to keep clean. Products using Guardian with Microban® thread stay cleaner and fresher for longer. These benefits make it perfect for many different applications such as medical, athletic equipment, transportation, and theaters.



TREATED WITH  
**GUARDIAN** with **MICROBAN** PROTECTION THAT LIVES ON  
**ZONE OF PROTECTION**

UNTREATED THREAD  
**NO PROTECTION**

**SEE THE DIFFERENCE**



Nylon Black	B69 16 oz	B92 16 oz
	3GN69B	3GN92XLB

Polyester Black White	B92 16 oz	B138 16 oz
	3GP92XLB 3GP92XL	3GP138B 3GP138

Guardian Test Protocols:  
ASTC TM 90- Microbiological Activity,  
ASTM G21- Resistance of Polymeric Material to Fungi,  
MIL-STD-810G- Test Method 508.6 for Fungi.

Spools are approximately 16 oz, sold per net pound.  
Colors available as custom order.

\*MICROBAN® is a registered trademark of  
Microban Products Company.

# COIL ZIPPERS



## Quality Coil Zipper Chain

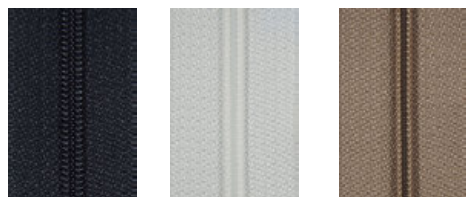
Size	Tape Width	Length (MTR)	Black	White	Case Qty (MTR)
#5	5/8"	250	Z5CFIB	Z5CFI	1000
#8	3/4"	200	Z8CFIB	SO	800
#10	3/4"	Black -150 White - 100	Z10CFIB	Z10CFI	Black -600 White - 100



## YKK Plastic Coil Zipper Chain (Water Resistant)

Size	Tape Width	Length (MTR)	Black	Case Qty (MTR)
#8	3/4"	150	Z8CT4580	300
#10	3/4"	100	Z10CT4580	200

## YKK Coil Zipper Chain



Size	Tape Width	Length (MTR)	Black	White	Beige	Case Qty (MTR)
#3	1/2"	750	Z3CF580	SO	SO	750
#4.5	9/16"	500W	Z45CFS580	SO	SO	1000
#4.5	5/8"	200	Z4.5CF580	Z4.5CF501	Z45CF573	400
#5	5/8"	200	Z5CF580	Z5CF501	SO	400
#8	3/4"	150	Z7CF580	Z7CF501	SO	750
#9	3/4"	100	Z9CF580	SO	SO	500
#10	3/4"	100	Z10CF580	Z10CF501	SO	200



## Quality Single Pull Non-Lock Metal Sliders

Size	Black	Case Qty
#5	Z5CFISLDR	1000
#8	Z8CISLDR	1000
#10	Z10CFISLDR	500



## YKK Single Pull Non-Lock Reverse Sliders

Size	Black	Case Qty
#5	Z5CNDFBL580	100
#10	Z10CFDFBL580	100



## YKK Single Pull Non-Lock Metal Sliders

Size	Black	White	Antique Brass	Gold Plated	Nickel Plated	Case Qty
#3	Z3CFDFL580	SO	SO	SO	SO	100
#4.5	Z45CFDFLD580	Z45CFDFLD501	Z45CFDFLIP	SO	Z45CFDFLDNP	1000
#5	Z5CFDFLD580	Z5CFDFLD501	SO	SO	Z5CFDFLDNP	1000
#8	Z7CFDFL580	Z7CFDFL501	Z8CFDFLIP	Z8CFDFLGP	Z8CFDFLNP	100
#10	Z10CFDFL580	Z10CFDFL501	SO	SO	Z10CFDFLNP	100



## YKK Single Short Pull Non-Lock Sliders

Size	Black	Nickel Plated	Case Qty
#4.5	Z45CFDFW580	Z45CFDFWNP	100



## YKK Double Pull Non-Lock Sliders

Size	Black	Case Qty
#5	Z5CNDWL580	100
#8	Z8CFDWL580	100
#10	Z10CFDWL580	100



# MOLDED PLASTIC ZIPPERS



YKK Molded Plastic Zipper Chain

Size	Tape Width	Length (MTR)	Black	White	Case Qty (MTR)
#5	9/16"	200	Z5VF580	Z5VF501	400
#8	5/8"	125	Z8VF580	Z8VF501	250
#10	11/16"	100	Z10VF580	Z10VF501	200



YKK #10 VISLON®  
Molded Separating Zippers

Length	Black	White	Case Qty
12"	ZVFO10712580	ZVFO10712501	50
18"	ZVFO10718580	ZVFO10718501	50
24"	ZVFO10724580	ZVFO10724501	50
30"	ZVFO10730580	ZVFO10730501	50
36"	ZVFO10736580	ZVFO10736501	50
42"	ZVFO10742580	ZVFO10742501	25
48"	ZVFO10748580	ZVFO10748501	25
54"	ZVFO10754580	ZVFO10754501	20
60"	ZVFO10760580	ZVFO10760501	20
72"	ZVFO10772580	ZVFO10772501	20
84"	ZVFO10784580	ZVFO10784501	10
96"	ZVFO10796580	ZVFO10796501	10
108"	ZVFO10710858	ZVFO10710850	10
120"	ZVFO10712058	ZVFO10712050	10
144"	ZVFO107144580	ZVFO107144501	10



YKK Single Pull Auto-Lock Molded Plastic Sliders

Size	Black	White	Case Qty
#5	Z5VFTA580	Z5VSTA501	100



YKK Single Pull Auto-Lock Metal Sliders

Size	Black	White	Case Qty
#5	Z5VSDA580	Z5VFDAD501	100
#8	Z8VFDA580	SO	100
#10	Z10VFDA580	Z10VFDA501	100



YKK Single Long Pull Non-Lock Metal Sliders

Size	Black	White	Case Qty
#5	Z5VSDFL580	SO	100
#10	Z10VFDFL580	Z10VFDFL501	100



YKK Double Pull Auto-Lock Molded Plastic Sliders

Size	Black	White	Case Qty
#5	Z5VFDX2L580	Z5VFDX2L501	100
#10	Z10VFDX580	Z10VFDX501	100

# METAL ZIPPERS



YKK Metal Zipper Chain

Size	Tape Width	Length (YDS)	Black Aluminum	Black Brass	Brown Brass	Case Qty (YDS)
#5	9/16"	150	SO	Z5RGM916580	SO	300
#5	11/16"	125	SO	Z5RGM1116580	Z5RGM1116570	250
#10	3/4"	75	Z10MAM580	Z10MGM34580	Z10MGM570	150



YKK Single Pull Auto-Lock Metal Sliders

Size	Gold Plated	Case Qty
#5	Z5MFDAGP	100



YKK Single Pull Non-Lock Metal Sliders

Size	Gold Plated	Case Qty
#5	Z5MFDLGP	100
#10	Z10MFDLGP	100

SO= Special Order

## QUICK SEW



- Sewn onto material
- Common uses: Sporting Goods, Apparel, Bags, and Furniture

## Sewing Quality

Size	Black Hook	Black Loop	White Hook	White Loop	Beige Hook	Beige Loop	Put-Up	Case Qty
5/8"	VSQ058BH	VSQ058BL	VSQ058H	VSQ058L	VSQ058BGEH	VSQ058BGEL	25 yds	750 yds
3/4"	VSQ075BH	VSQ075BL	VSQ075H	VSQ075L	VSQ075BGEH	VSQ075BGEL	25 yds	625 yds
1"	VSQ100BH	VSQ100BL	VSQ100H	VSQ100L	VSQ100BGEH	VSQ100BGEL	25 yds	500 yds
1-1/2"	VSQ150BH	VSQ150BL	VSQ150H	VSQ150L	VSQ150BGEH	VSQ150BGEL	25 yds	300 yds
2"	VSQ200BH	VSQ200BL	VSQ200H	VSQ200L	VSQ200BGEH	VSQ200BGEL	25 yds	250 yds
3"	VSQ300BH	VSQ300BL	VSQ300H	VSQ300L	SO	SO	25 yds	200 yds
4"	VSQ400BH	VSQ400BL	VSQ400H	VSQ400L	VSQ400BGEH	VSQ400BGEL	25 yds	150 yds

SO = Special Order (minimum quantities and lead times apply)

## QUICK STICK

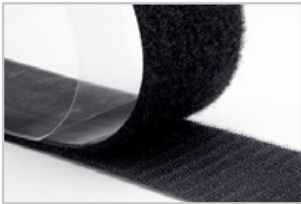


- 80% bond after 1 hour, 100% after 24 hrs
- Temperature range of -40°F to 190°F
- Adheres to plastics, vinyl, metals and glass
- Best suited for dry conditions & indoor usage

## Pressure Sensitive (Rubber Base) Adhesive

Size	Black Hook	Black Loop	White Hook	White Loop	Put-Up	Case Qty
5/8"	VPQ058BH	VPQ058BL	VPQ058H	VPQ058L	25 yds	625 yds
3/4"	VPQ075BH	VPQ075BL	VPQ075H	VPQ075L	25 yds	500 yds
1"	VPQ100BH	VPQ100BL	VPQ100H	VPQ100L	25 yds	450 yds
1-1/2"	VPQ150BH	VPQ150BL	VPQ150H	VPQ150L	25 yds	300 yds
2"	VPQ200BH	VPQ200BL	VPQ200H	VPQ200L	25 yds	250 yds
3"	VPQ300BH	VPQ300BL	VPQ300H	VPQ300L	25 yds	175 yds
4"	VPQ400BH	VPQ400BL	VPQ400H	VPQ400L	25 yds	150 yds

## HERCULES HOOK & LOOP



- Full bond strength after 24 hours
- Temperature range of -40°F to 240°F
- Adheres best to wood, aluminum, copper, steel & polyurethane
- Holds up well to moisture and changing outdoor conditions

## Pressure Sensitive Acrylic Adhesive

Size	Black Hook	Black Loop	White Hook	White Loop	Put-Up	Case Qty
3/4"	VPQA075BH	VPQA075BL	VPQA075H	VPQA075L	25 yds	500 yds
1"	VPQA100BH	VPQA100BL	VPQA100H	VPQA100L	25 yds	450 yds
1-1/2"	VPQA150BH	VPQA150BL	VPQA150H	VPQA150L	25 yds	300 yds
2"	VPQA200BH	VPQA200BL	VPQA200H	VPQA200L	25 yds	250 yds

## FLAME GUARD FR HOOK & LOOP



- Meets U.S. Federal Aviation specification FAR 25.853(b), for special occasion applications
- Applications: aerial and automotive industry, ship, and seating

## Flame Retardant Sewing Quality

Size	Black Hook	Black Loop	Put-Up	Case Qty
1"	VSQ100BHFR	VSQ100BLFR	50 yds	1000 yds





**VELCRO® ONE-WRAP®**

Hook and loop laminated back to back without glue, so there's no chemical residue. Ideal for coding network and electrical wiring.

Size	Black	White	Put-Up	Case Qty
1/2"	VONEWRAP1/2B	SO	25 yds	625 yds
1"	VONEWRAP100B	VONEWRAP100	25 yds	500 yds
1-1/2"	VONEWRAP1.5B	SO	25 yds	250 yds
2"	VONEWRAP200B	SO	25 yds	250 yds

SO = Special Order (minimum quantities and lead times apply)



**VELCRO® Heat Sealable Hook & Loop**

Becomes tacky when heat is applied either by iron or RF welding. Bonds to a wide range of fabrics. Excellent water resistance. Temperature range -40F to 160F.

Size	Black Hook	Black Loop	Put-Up	Case Qty
1"	VHP100B0143	VLP100B0143	25 yds	900 yds



**VELCRO® Velstick® Hook and Loop**

Provides a permanent fixture to hard surfaces. A semi-rigid, high-impact vinyl extrusion with VELCRO Brand hook or loop permanently attached. Simply install to the desired surface with staples, tacks, rivets, or screws. Fasteners can be cut with scissors, drilled, or punched. Use the strips on tents, camping trailers, stationary and patio awning ties, marine uses, and other mounting or adhering functions.

Size	Black Hook	Black Loop	White Hook	White Loop	Put-Up	Case Qty
1"	VLSTKHK100B	VLSTKLP100B	VLSTKHK100	VLSTKLP100	4 ft	840 ft



**VELCRO® Velstretch®**

Made for applications that require the closure to expand and contract. Provides about 55% stretch and has a moderate to high cycle life. Great for power cords, garden hose, camping and sporting equipment and much more.

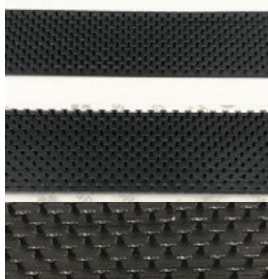
Size	Black Loop	Put-Up	Case Qty
1"	VELSTRECHB	25 yds	800 yds



**VELCRO® Back-to-Back Double-Sided Hook and Loop**

Fasteners feature woven Hook 88 and Loop 1000 products glued together for durable and reusable self-engaging straps.

Size	Black	Put-Up	Case Qty
1"	VBK2BK100B	25 yds	500 yds



**VELCRO® Hook MVA#8 Fasteners**

**Sew-On MVA#8** is a strong, high profile molded polypropylene hook fastener. This product is ideal in outdoor conditions as the plastic is mold and UV resistant. This product is used in applications where a stronger bond between hook and loop is required, but still maintains a short cycle life.

**Sew-On**

Size	Black	Put-Up	Case Qty
1"	VMVA8100B	25 yds	500 yds

**Pressure Sensitive MVA#8** with acrylic adhesive backing is the same product as the sew-on version, but with an easy to apply industrial strength adhesive. The Acrylic Adhesive works best on substrates such as: Aluminum, Stainless Steel, Painted Metal, Glass, and Rigid Plastics. VELCRO® Brand MVA#8 is ideal for automotive or marine applications.

**Pressure Sensitive**

Size	Black	Put-Up	Case Qty
1"	VMVA8P100B	25 yds	250 yds



# Nylon Webbing

## Features

- High tensile strength
- Abrasion resistant
- High end feel
- Low stretch
- Does not degrade in sunlight

## Applications

- Restraint systems
- Medical equipment
- Fitness equipment
- Safety harnesses
- Tote bags
- Backpacks
- Pet collars



### Nylon - Light Weight - sold per roll, 100 yards per roll

Color	3/4"	1"	2"
Black	WN2011034B	WN2011100B	WN2011200B
Break Strength	850 lbs	1300 lbs	1800 lbs
Case Qty	1000 yds	1000 yds	500 yds



### Nylon - Heavy Weight - sold per roll, 100 yards per roll

Color	3/4"	1"	1-1/2"	2"
Black	WN0019034B	WN0019100B	WN2038150B	WN2038200B
White	WN0019034	WN0019100	-	-
Red	-	-	WN2038150RED	WN2038200RED
Royal Blue	-	-	WN2038150ROYALBLUE	-
Break Strength		3800 lbs	5700 lbs	7000 lbs
Case Qty	700 yds	500 yds	350 yds	250 yds



### Nylon - Dive Belt / Holster Webbing - sold per roll, 50 yards per roll

Color	2"
Black	WN4500200B
Break Strength	7000 lbs
Case Qty	250 yds

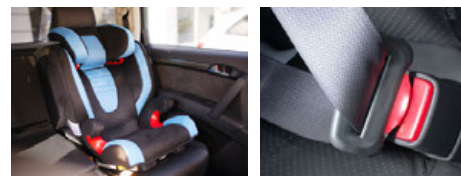
# Polyester Webbing

## Polyester - 5 Panel Seat Belt Style

Sold per roll, 100 yards per roll



Color	2"
Black	WP6001200B
Break Strength	6000 lbs
Case Qty	500 yds



## Features

- Abrasion Resistant

## Applications

- Tie-downs
- Restraints



# Polypropylene Webbing

## Features

- Repels water
- Mildew resistant
- Low stretch
- Ultra violet resistant

## Applications

- Backpacks
- Luggage/bags
- Tents
- Pool covers
- Life jackets



### Polypropylene - Light Weight - sold per roll, 100 yards per roll

Color	3/4"	1"	1-1/2"	2"	3"
Black	WLW034B	WLW100B	WLW150B	WLW200B	WLW300B
White	WLW034	WLW100	WLW150	WLW200	WLW300
Break Strength	360 lbs	540 lbs	600 lbs	1040 lbs	1600 lbs
Case Qty	1000 yds	1000 yds	1000 yds	500 yds	400 yds



### Polypropylene - Heavy Weight - sold per roll, 100 yards per roll

Color	3/4"	1"	1-1/2"	2"	3"	4"
Black	WHW034B	WHW100B	WHW150B	WHW200B	WHW300B	WHW400B
White	-	WHW100	WHW150	WHW200	WHW300	-
Red	-	WHW100RED	-	-	-	-
Yellow	-	-	-	WHW200YELLOWRW	-	-
Break Strength	700 lbs	800 lbs	1100 lbs	1600 lbs	2100 lbs	2640 lbs
Case Qty	1000 yds	1000 yds	700 yds	500 yds	400 yds	300 yds



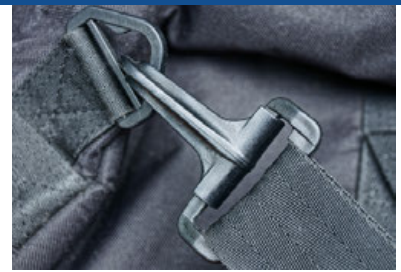
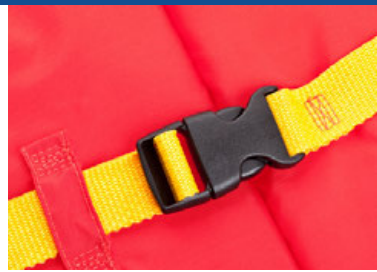
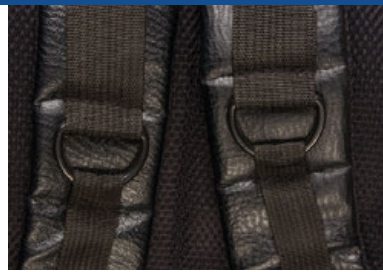
### Polypropylene - Herringbone - sold per roll, 100 yards per roll

Color	3/4"	1"	1-1/4"	1-1/2"	2"
Black	WPP069034B	WPP069100B	W1601125B	W1601150B	W1601200B
Break Strength	200 lbs	250 lbs	300 lbs	350 lbs	425 lbs
Case Qty	2000 yds	2000 yds	1000 yds	1000 yds	500 yds



### Polypropylene - Grosgrain Binding - sold per roll, 200 yards per roll

Color	3/4"	1"
Black	W7961034B	WPP020100B
Case Qty	3000 yds	4000 yds



# Plastic Hardware



## Side Release Buckle

Standard side release buckle.

Applications: tents, bags, backpacks, pet accessories, luggage production, and military or tactical assemblies.

Size	Black	Bag Qty
3/4"	HWM130034B	500
1"	HWM130B	250
1-1/2"	HWM130150B	200
2"	HSRB200B	100



## Tri Slide

Used to make a strap adjustable.

Applications: tents, bags, backpacks, pet accessories, luggage production, and military or tactical assemblies.

Size	Black	Bag Qty
1"	HWM301100B	1000
1-1/2"	HWM301150B	500



## Hexagon Ring

A D-Ring with separate openings for the strap and the hook.

Applications: tents, bags, backpacks, pet accessories, luggage production, and military or tactical assemblies.

Size	Black	Bag Qty
1-1/2"	HWM416150B	500



## D-Ring

Used to make a strap adjustable, attach fabric to strap, add decorative elements, and more.

Applications: tents, bags, backpacks, pet accessories, luggage production, and military or tactical assemblies.

Size	Black	Bag Qty
1"	HWM303100B	1000



## Swivel Snap Hook

Hook is on a swivel, allowing for comfortable attachment.

Applications: tents, bags, backpacks, pet accessories, luggage production, and military or tactical assemblies.

Size	Black	Bag Qty
1-1/2"	HWM203150B	500



## Shoulder Pad

Rounded shoulder pads slides onto a strap.

Applications: tents, bags, backpacks, pet accessories, luggage production, and military or tactical assemblies.

Size	Black	Bag Qty
1-1/2"	HWM802150B	200



## Spa Buckle

Plastic spa buckle with matching key.

Applications: spa covers.

Size	Black	Case Qty
1"	HSPABUCKLE	1500

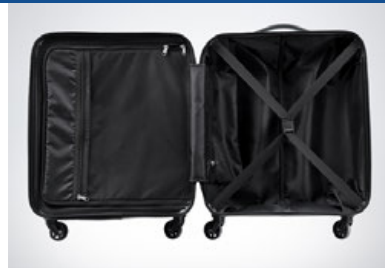
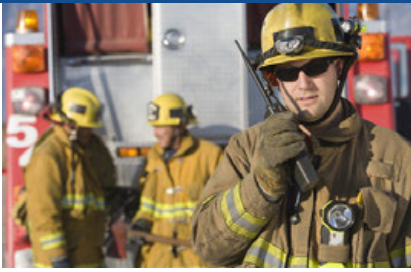


## Strap Lock

A heavy-duty tri-slide. Best for high load applications, 1000 lb. break strength.

Applications: tents, bags, backpacks, pet accessories, luggage production, and military or tactical assemblies.

Size	Black	Bag Qty
2"	HSTRAPLOCK	100



# Knit Elastic

A soft, lightweight elastic that can be used directly against the skin. It does not narrow when stretched, so it keeps its resiliency when sewn into fabrics. Knit elastic is best used with light-weight to medium-weight applications. Perfect for apparel, bags, and medical gear.



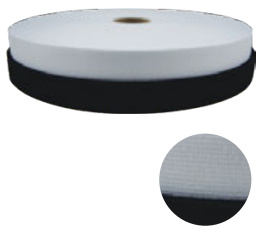
## Knit Light Weight

Size	Black	White	Roll Qty
1/2"	-	E3000KS015	144 yds
1"	E3300100B	E3300100	50 yds



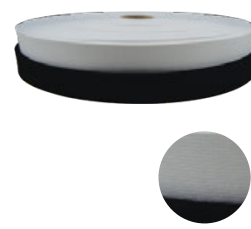
## Knit Medium Weight

Size	Black	White	Order Qty
1/4"	-	ESC1040014WH	2,900 yd bag
1"	E3330100B	E3330100	50 yd roll
1-1/4"	E3330125B	E3330125	50 yd roll
1-1/2"	E3330150B	E3330150	50 yd roll
2"	E3330200B	E3330200	50 yd roll



## Knit Medium Weight, Latex Free

Size	Black	White	Roll Qty
1"	E85L9100B	E85L9100	50 yds
3"	E3330300B	E3330300	50 yds
4"	E3330400B	E85L9400	50 yds



## Knit Heavy Weight

Size	Black	White	Roll Qty
1"	EJB76100B	EJB76100	50 yds
1-1/2"	EJB76150B	EJB76150	50 yds
2"	EJB76200B	EJB76200	50 yds

# Braided Elastic

Elastic with parallel ribs running the length of the elastic. It narrows when it is stretched, making it perfect for use in casings. Also used most in light-weight to medium-weight applications. Ideal for face masks, athletic gear, and safety equipment.



## Braided Medium Weight

Size	Black	White	Order Qty
1/4"	EP65014B	EP65014	144 yds
1/2"	EP65015B	EP65015	144 yds
3/4"	EP65034B	EP65034	144 yds



## Braided Medium-Heavy Weight

Size	Black	Roll Qty
1/4"	EB733014B	144 yds
1/2"	EB733015B	144 yds
3/4"	EB733034B	144 yds



## Q-Brand Braided Medium Weight

Size	Black	White	Order Qty
1/4"	ESC1040014WB	ESC1040014	144 yds

## Braided Heavy Weight

Size	Black	Roll Qty
1"	E3506100B	144 yds

# Thread Selection Guide

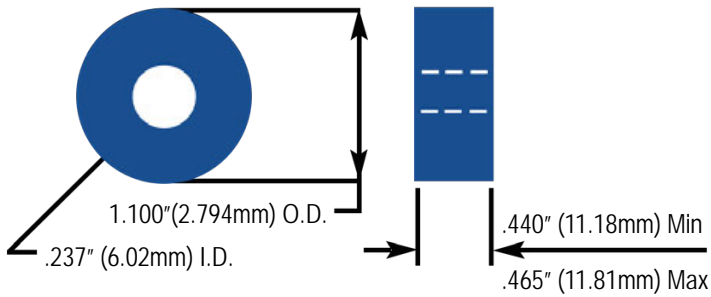
Applications/Features	Nylon	Polyester	PTFE	Kevlar	Solution Dyed Polyester/Nylon
Indoor	X		X		
Outdoor		X	X		
Abrasion Resistance	X		X	x	
Chemical Resistance	X		X		X
UV/Mildew Resistance		X	X		
Heat Resistance			X	UP TO 500° C (932° F)	
Superior Strength			X	X	

# Ticket-TEX Chart

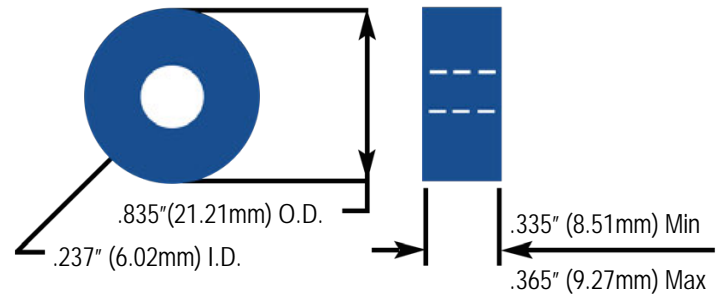
Ticket	Tex
B33	T35
B46	T45
B69	T70
B92	T90
B138	T135
B207	T210
B277	T270
B346	T350
B415	T400

# Ready-Wound Bobbin Sizing & Dimensions

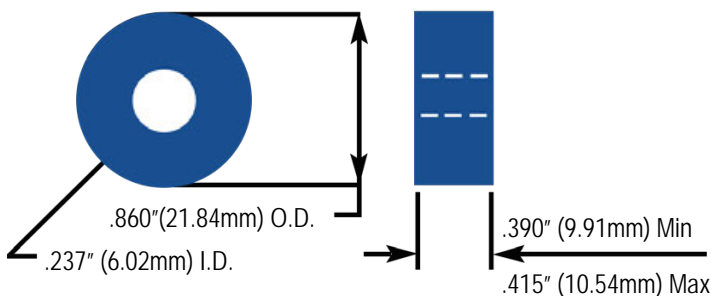
Style U



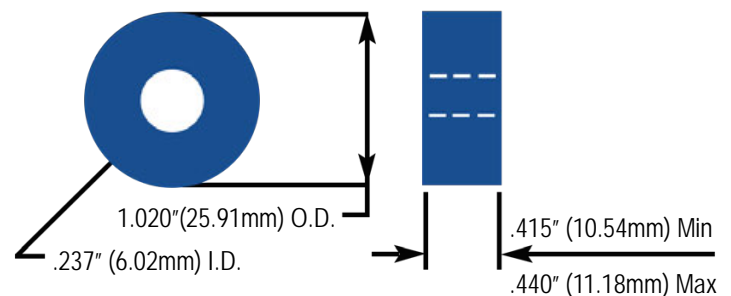
Style L



Style G



Style M



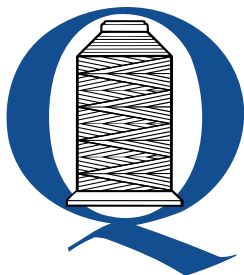


# Thread Needle Size Chart

Thread		Needle	
Tex	Metric	Metric	Singer
T-16	180	60	8
T-18	160	65	9
T-21	140	70	10
T-24	120	70	10
T-27	100	75	11
T-30	90	75	11
T-35	80	80	12
T-40	75	90	14
T-45	60	90	14
T-50	60	100	16
T-60	50	110	18
T-70	40	110	18
T-80	36	120	19
T-90	30	125	20
T-105	27	125	20
T-120	25	130	21
T-135	20	140	22
T-150	18	160	23
T-180	14	180	24

# Needle Troubleshooting Guide

Problems	Possible Causes	Solutions
<b>Upper Thread Breaks</b>	<ul style="list-style-type: none"> <li>• Incorrect threading</li> <li>• Knots or twists in thread</li> <li>• Tension too tight</li> <li>• Needle too small</li> <li>• Damaged/old needle</li> </ul>	<ul style="list-style-type: none"> <li>• Check tension disc for cuts</li> <li>• Rethread machine properly</li> <li>• Reset thread &amp; bobbin tension</li> <li>• Replace needle for correct size for thread/application</li> <li>• Check for thread stuck inside foot</li> </ul>
<b>Bobbin Thread Breaks</b>	<ul style="list-style-type: none"> <li>• Bobbin case incorrectly inserted</li> <li>• Bobbin does not turn smoothly</li> <li>• Lint in bobbin case</li> <li>• Bobbin tension too tight</li> </ul>	<ul style="list-style-type: none"> <li>• Remove &amp; re-insert bobbin with bobbin turning clockwise</li> <li>• Check that bobbin case is not out of shape</li> <li>• Clean out bobbin case/tension spring</li> <li>• Check &amp; reset bobbin tension</li> </ul>
<b>Skipped Stitches</b>	<ul style="list-style-type: none"> <li>• Thread tension too tight</li> <li>• Needle damaged</li> <li>• Needle wrong size</li> <li>• Sewing machine out of adjustment</li> </ul>	<ul style="list-style-type: none"> <li>• Clean out bobbin case and oil</li> <li>• Replace needle with correct needle size</li> <li>• Adjust machine timing, hook to needle clearance, needle bar height</li> </ul>
<b>Frayed Stitches</b>	<ul style="list-style-type: none"> <li>• Needle too small</li> <li>• Tension too tight</li> <li>• Damaged thread</li> </ul>	<ul style="list-style-type: none"> <li>• Increase needle size</li> <li>• Reset tensions</li> <li>• Check for burrs in thread guides</li> <li>• Replace thread</li> </ul>
<b>Thread Loops on Bottom</b>	<ul style="list-style-type: none"> <li>• Thread not in to tension</li> <li>• Machine incorrectly threaded</li> <li>• Top tension too loose</li> <li>• Burr on hook mechanism</li> </ul>	<ul style="list-style-type: none"> <li>• Rethread machine with presser foot "up" and use the take up lever</li> <li>• Clean out tension discs</li> <li>• Remove burrs</li> <li>• Reset top tension</li> </ul>
<b>Irregular Stitches or Malformed Stitches</b>	<ul style="list-style-type: none"> <li>• Wrong needle size</li> <li>• Incorrect threading</li> <li>• Upper tension too loose</li> <li>• Operator pulling fabric</li> <li>• Bobbin wound unevenly</li> </ul>	<ul style="list-style-type: none"> <li>• Ensure correct needle for fabric &amp; thread</li> <li>• Carefully rethread machine</li> <li>• Reset lower &amp; upper tension</li> <li>• Check presser foot pressure</li> <li>• Rewind bobbin or replace</li> </ul>
<b>Fabric Puckers</b>	<ul style="list-style-type: none"> <li>• Excessive stitch length</li> <li>• Needle point is blunt</li> <li>• Excessive thread tension</li> <li>• Fabric is too soft</li> <li>• Thread displacement-too much thread in a small area</li> <li>• Fabric not feeding</li> </ul>	<ul style="list-style-type: none"> <li>• Decrease stitch length</li> <li>• Change needle often</li> <li>• Check bobbin &amp; upper tension</li> <li>• Use stabilizer</li> <li>• Decrease field density; increase stitch length</li> <li>• Check presser foot; needle plate; feed dogs</li> </ul>



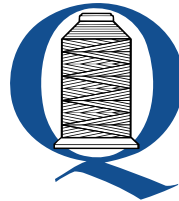
**Important:** Needles **DO NOT** last forever, they should be replaced at the least every 8 hours. When going to a larger size of thread, a larger needle should be used. Information primarily provided by Schmetz Needle Company with some updates.

# Product Enhancements

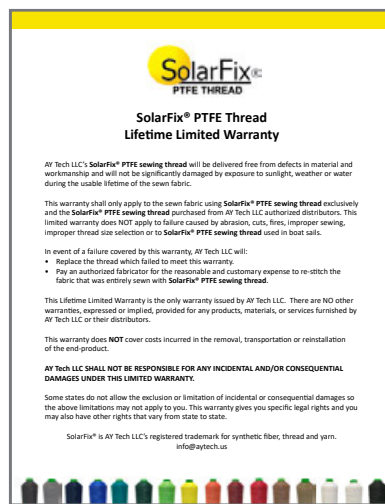
We are happy to supply you with product enhancements and marketing materials to help promote the use of trusted QTN products, including thread color cards used to match to a specific shade, sew-in tags to show the quality thread used, and more.

Please contact QTN for more information on receiving these items.

Thread Color Cards  
Printed Color Cards  
Warranty Cards  
Sew-in Tags



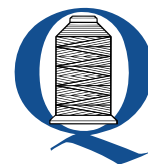
Spec Sheets  
Logo Rights  
Logo Usage for Web & Social Media



# Index

Click on page number to go to page.

- A** A&E Brands | 10-11, 19  
 Acrylic Adhesive | 26-27  
 Anefil Nylon | 19  
 Anefil Poly | 10  
 Antimicrobial | 23  
 Anti-Wick | 6,9  
 Aramid Kevlar | 20  
 Astra | 13
- B** Back-to-Back Velcro | 27  
 Banner Thread | 10  
 Bobbins | 6-8,15,17,20  
 Bond Testing | 5  
 Braided Elastic | 31
- C** Coats Brands | 8-9, 12-13, 21  
 Coil Zipper | 24  
 Color Cards | 34  
 Contrast | 16, 34  
 Core Spun | 12,13  
 Core Thread | 11,12  
 Crocking | 5
- D** Dabond | 9  
 D-Ring | 30  
 Dual Duty | 12
- E** Elastic | 31  
 Embroidery | 22  
 Epic | 13  
 Excell | 11
- F** Fire Resistant | 20, 26  
 Flame Guard | 26  
 Flame Retardant | 26
- G** Grosgrain | 29  
 Guardian with Microban | 23
- H** Hand Sewing Thread | 18  
 Heat Sealable Velcro | 27  
 Hercules Hook & Loop | 26  
 Hercules Thread | 20  
 Herringbone | 29  
 Hexagon Ring | 30
- High-Spec | 14-15, 34  
 Hook & Loop | 26-27
- K** Kevlar | 20  
 Knit Elastic | 31
- L** Latex Free | 31
- M** Magic | 11  
 Metal Zipper | 25  
 Migration | 5  
 Molded Zipper | 25  
 Monocord | 21  
 Monofilament | 17  
 MVA-8 | 27
- N** Needle Chart | 33  
 Needle Trouble Shooting Guide | 33  
 Notions | 24-31  
 Nylon Threads | 14-21, 23  
 Nylon Webbing | 28  
 Nymo UVR | 21
- O** One-Wrap Velcro | 27
- P** Perma Core | 11  
 Plastic Hardware | 30  
 Poly-Core | 11  
 Polyester Threads | 6-13, 20,22-23  
 Polyester Webbing | 28  
 Polymatic | 21  
 Polypropylene Webbing | 29  
 Product Enhancements | 34  
 PTFE Thread | 2
- Q** QT Nylo | 21  
 QTC Contrast | 16, 34  
 QTC Nylon | 17  
 QTC Polyester | 9  
 QTN Brands | 4  
 QTN Quality Assurance Program | 5  
 Qucik Stick | 26  
 Quick Sew | 26
- R** Ready-Wound Bobbins Sizing Chart | 32  
 Resources & Technical Data | 32-34
- Rubber Adhesive | 26
- S** Sew-In Tags | 34  
 Sewing Quality | 26  
 Shoulder Pad | 30  
 Side Release Buckle | 30  
 Sliders | 24-25  
 SolarFix® PTFE | 2, 34  
 Spa Buckle | 30  
 Specialty Thread | 20-23  
 Spun Polyester | 11, 13  
 Staple Spun | 11  
 Star Handtuft Twine | 18  
 Strap Lock | 30  
 Sunguard+ | 6-7, 34  
 Swivel Snap Hook | 30
- T** Thread Selection Guide | 32  
 Thread Testing | 5  
 Thread-to-Needle Size Chart | 33  
 Ticket-Tex Chart | 32  
 Tri Slide | 30
- U** Ultimax | 12  
 Ultra Dee | 8  
 UVR Resistant | 6-7, 22
- V** Velcro | 27  
 Velstick | 27  
 Velstretch | 27  
 Vision | 22, 34  
 Vislon | 25
- W** Warranty Cards | 34  
 Webbing | 28-29  
 WonderThread Monofilament | 17
- Y** YKK Brand | 24-25
- Z** Zipper Chain | 24-25  
 Zippers | 24,25



# SAME DAY SHIPPING QUALITY TESTED

THREAD \* HOOK & LOOP  
ZIPPERS \* WEBBING \* ELASTIC  
PLASTIC HARDWARE



**QUALITY THREAD & NOTIONS**

32500 Solon Road  
Solon, OH 44139  
P: 800-521-4308  
F: 440-349-2255  
info@qualitythread.com

**800-521-4308**

**QUALITYTHREAD.COM**

