



1. Install the App "PV Cam Viewer"

We provide 2 methods to install PV Cam Viewer app.

(1) Scan the QR code on this page with the QR code reader on your smart phone. The app will be downloaded automatically.



(2) To manually install PV Cam Viewer, go to App Store(iOS) or Play Store (Android) on your phone. Enter "PV Cam Viewer" to search and download the App. Once "PV Cam Viewer" icon shows on your phone, the app is successfully installed.



1

2. Configure Device Wi-Fi (P2P connection)

(1) To connect your device with your phone, turn on the Wi-Fi function on your device.



(2) Go to **Settings >> Wi-Fi** on your smart phone, and turn on Wi-Fi function.

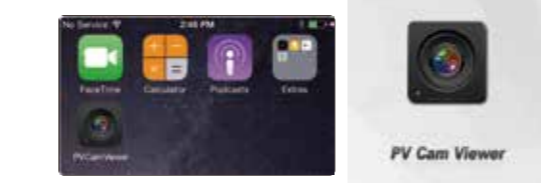


(3) Enable the Wi-Fi to search for the name of Wi-Fi network which is displayed as ID on the device.(For example: the ID here is P000048.)



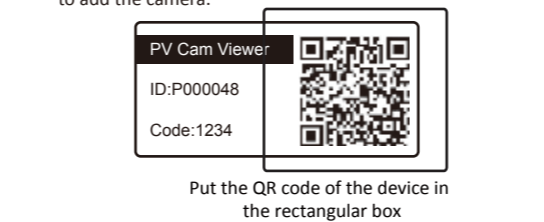
2

(4) Join the network and enter the password "88888888".



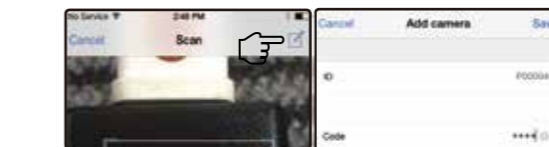
(5) Return to the home screen and start the app "PV Cam Viewer".

(6) To add device to **Device Management**, go to **Device Management** on the App, press the + on the upper right corner of the screen. Next, select method A or B to proceed.



3

(7) Press the pencil icon on the upper right corner, and manually enter the ID and code, which are displayed on the device.



When the information **Device on-line** appears on **Device Management**, it means the Device Wi-Fi (P2P connection) is successfully configured.

3. Synchronize the Time

It's important to sync the time on device and your phone before the first recording. Please go to **Program Setting** on main menu, tap on **Synchronize the time**, and enter the correct time.

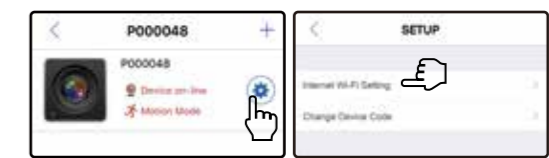


4

4. Configure Internet Wi-Fi (IP connection)

To remotely control your device through the internet, please follow these steps.

(1) Make sure the device is added and on-line, and press the gear icon on the right of the device. Then, go to **Internet Wi-Fi Setting**.



(2) Turn on the Internet Wi-Fi, enter the **SSID** and **Password** of your Internet Wi-Fi, and press **Save**.



(3) Check the LED indicator on the device to make sure the Internet Wi-Fi (IP connection) is successfully configured.

Note:
a. Once the Internet Wi-Fi (IP) is successfully configured, the device will remember the Internet Wi-Fi access and automatically connect to it the next time you turn on the device.
b. If you want to change the IP connection from A Internet to B Internet, please default the device, or refer to instruction on P.8

5

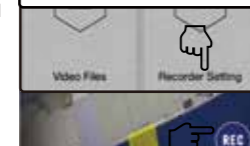
5. Stream Live View

With the Internet Wi-Fi (IP connection) successfully connected, you can start to remotely control your camera and remotely stream live view.

(1) Go to **Device Management**, and tap on the device you want to operate.

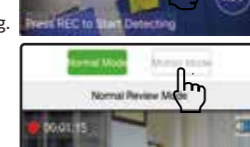


(2) Go to **Recorder Setting** on **Main Menu**. A live view will be displayed on screen.



Note: If you go to **Program Setting**, the ongoing recording will pause, and restart again when you exit it.

(3) Press **REC** to start recording. Press **STOP** to stop recording.



(4) To change the recording mode, please press **STOP** to pause the recording first, and then tap on the mode you want.



(5) To take a snap shot, please press **STOP** first, and tap on **CAP**. You could go to **Main Menu > Video Files > Photograph** to check your photos.

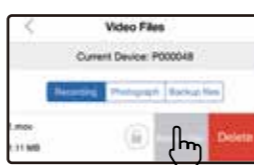
6

(6) To turn on the overwrite function, go to **Recorder Setting > SETUP** when there is no ongoing recording. Swipe right to turn on **Overwrite** function.

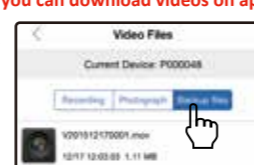


6. Download Videos and Photos

(1) To back up files to your phone, please go to **Recording in Video Files**, find the video file you want to back up and swipe it to the left. Then, select **Backup files**.

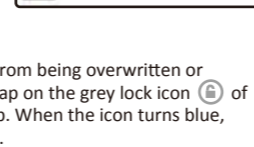


(2) Go to **Backup files** to check if the file is successfully backed up in your phone.
*Files in **Backup files** are stored in your phone.
*Files in **Recording** or **Photograph** are stored in the memory card.



7. Lock up the files

If you want to protect the files from being overwritten or deleted, go to **Video Files**, and tap on the grey lock icon of the file you would like to lock up. When the icon turns blue, the file is successfully locked up.



7

8. Change Internet Wi-Fi (IP connection) Setting

(1) Make sure your phone and device both are connected to the same Wi-Fi internet. (For example, here they are both connected to LawMate.)



(2) Go to **Main Menu > Device Management > gear icon > Internet Wi-Fi Setting**.

(3) If you want to turn off the Internet Wi-Fi (IP connection) on device, please swipe it to the left. Device will automatically restore to P2P connection.

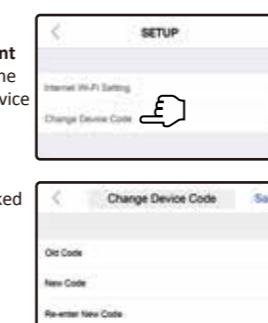
(4) If you want to change to another Internet Wi-Fi access, please enter the new SSID & new Password, and press **Save**.

Note:
a. If you relocate the device and can't complete step (1) here, please default the device and start over from the guide on P.2
b. If the info "Do not Support Internet Wi-Fi setting" pops up, please make sure step (1) is done correctly.

8

9. Change Device Code

(1) Go to **Device management** on **Main Menu**, tap on the gear icon of the device you want. Then, select **Change Device Code**.



(2) Enter the information asked (Old Code/New Code/ Re-enter New Code), and then tap on **Save**.

10. Turn off Motion Detection Notification

Android: (1)Go to the main setting on phone (2)Access the Application management (3)Access the PV Cam Viewer App (4)Deactivate Notification.

iOS: (1)Go to the main setting on phone (2)Access Notification (3)Access the PV Cam Viewer App (4)Deactivate Notification.

11. Trouble Shooting

(1) Why the message "Do not support xxx" pops up when I want to change some settings in Program Setting?
Please note that **SSID Visible** and **Modify Device Wi-Fi Password** can only be changed with P2P connection. And Format SD Card can only be done when the phone and device are connected to the same Internet Wi-Fi.
(2) Why the P2P or IP is configured, but I don't see any device gets online in **Device Management**?
Please try refresh the page by swiping it down.

9

PV Cam Viewer for IP Cam App Store/Play Store Installation Quick Guide



LawMate, innovation never stops
LawMate

V1.2