

Installing Stainless Steel Cone Handrail Bracket

Visit our website for more information: inlinedesign.us

Overview

Below are instructions for properly installing Stainless Steel Cone Handrail Brackets. This document applies for cable, glass and bar holder systems.

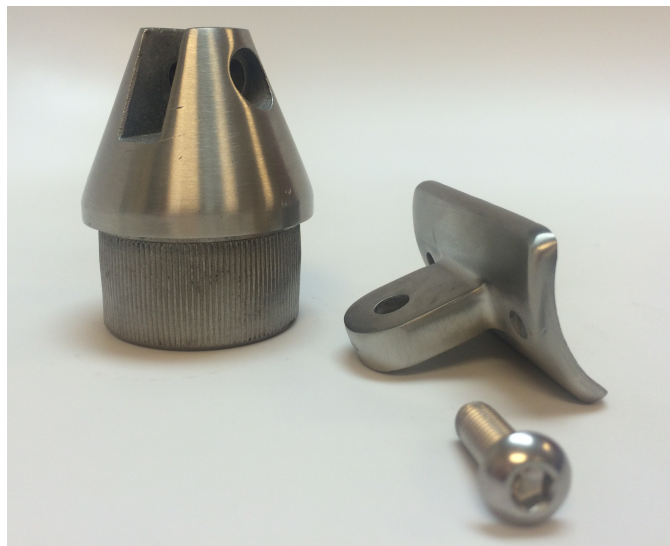
Caution: Wear protective ANSI approved safety glasses, working gloves and breathing mask all the times.

Tools Required

- 1) JB Weld glue (found at any local hardware store)
 - 2) Rubber mallet
 - 3) Thick piece of steel
 - 4) Cone Handrail Bracket
-

Installation Instructions

- 2) Apply JBWeld to the inside of the post
- 3) Align the bracket
- 4) Remove the round saddle of the bracket and tap the bracket lightly into the post with a rubber mallet just enough to slightly stabilize it



- 5) Slide in a thick piece of steel like shown in the picture and tap this introduced piece mallet until it is completely inserted.



NOTE: If the bracket doesn't align properly you can tap it out using a 1" rod from the bottom of the post. Be careful not to hit any of the tube threading while inserting the rod. Do this over a piece of cloth so that they bracket does not get scratched when it is tapped out.

NOTE: A small amount of surface corrosion is not uncommon after a some exposure to weather or salty conditions. We recommend using our passivation solution or some sort of stainless polish to keep any surf corrosion from happening; more information available at https://inlinedesign.us/engineering_specifications

Passivation Solution

<https://inlinedesign.us/products/stainless-steel-passivating-kit-citrisurf-77-plus>