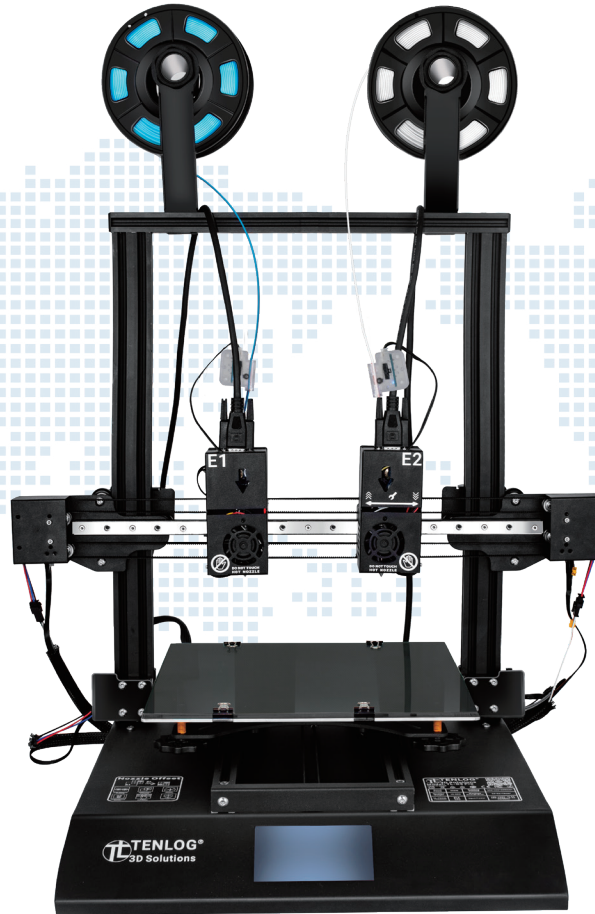


TL-D3 Pro & Hands 2 IDEX 3D Printer Manual



Warm.Fit

[Learn More](#)



This manual is for reference only.

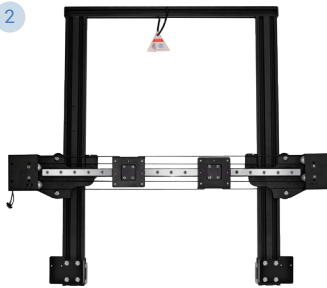
The structure and parts list of the TENLOG 3D printer are subject to the actual product in the carton, and subject to change without notice.

1



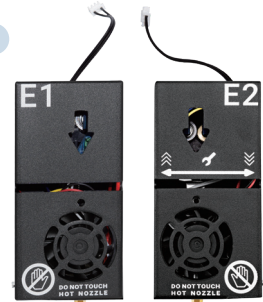
Printer Host

2



Z/X Gantry Assembly

3



Dual Extruder & Nozzle Kits

4

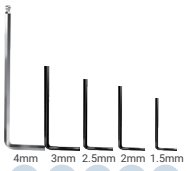


Tool Box 1

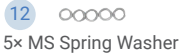
5



Tool Box 2



6 7 8 9 10
Allen Wrench



12 5x MS Spring Washer



11 5x M5*25 Screw



13 9x M3*16 Screw



31 Black Cable Tie



32 Test Filament



33 Test Filament



34 Metal Scraper



14 5x M4 T-Nut



15 5x M4*8 Screw



16 2x Filament Holder



17 2x 15 Pins VGA Cable



18 2x Filament Runout Sensor



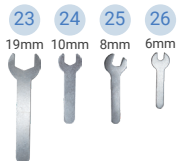
19 Power Cable



20 1.5m USB Cable



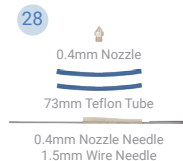
21 22
Card Reader



23 24 25 26
19mm 10mm 8mm 6mm
Open End Spanner



27
+ & -
Screwdriver



28
0.4mm Nozzle
73mm Teflon Tube
0.4mm Nozzle Needle
1.5mm Wire Needle
Nozzle Cleaning Kit



29
Diagonal Pliers



30
Blade

1

Minors are not allowed to use alone



2

Do not plug or unplug under power

NO HOT PLUG



3

Double check voltage before first use



Current Voltage: 100-120V



Current Voltage: 200-240V

4

Do not touch hot nozzle and hot bed



5

A grounded wire is required

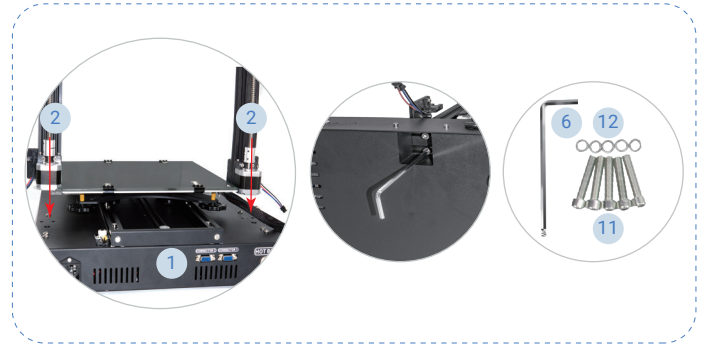


6

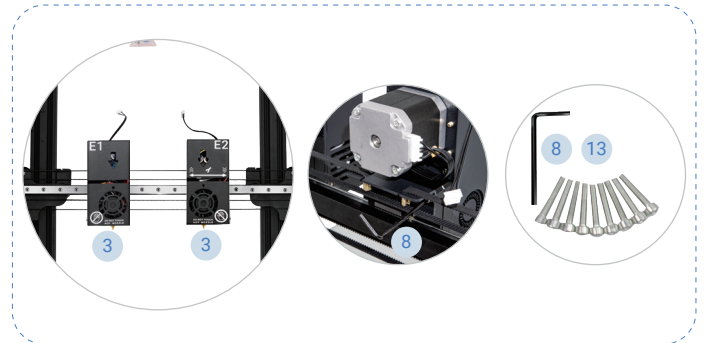
Do not touch any moving part



1. Assemble Z/X Gantry Assembly to the Printer Host



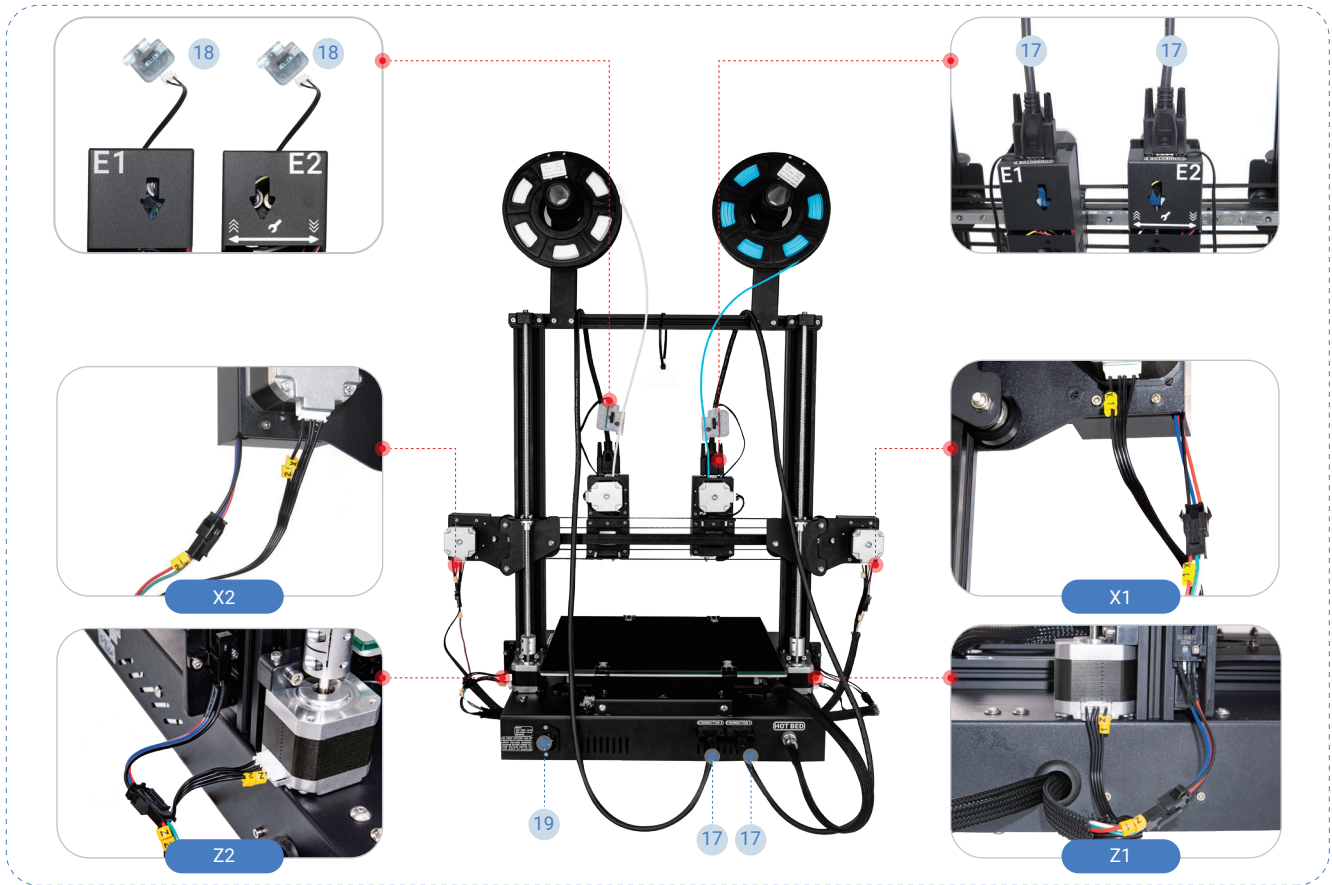
2. Assemble Dual Extruder & Nozzle Kits



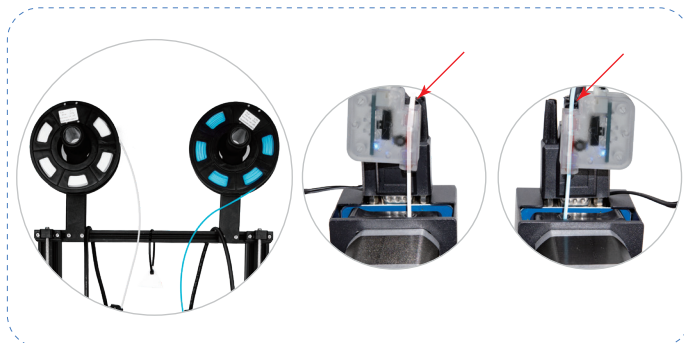
3. Assemble the Filament Holder



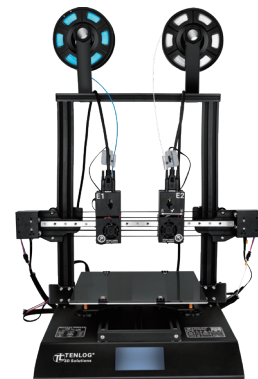
4. Wiring

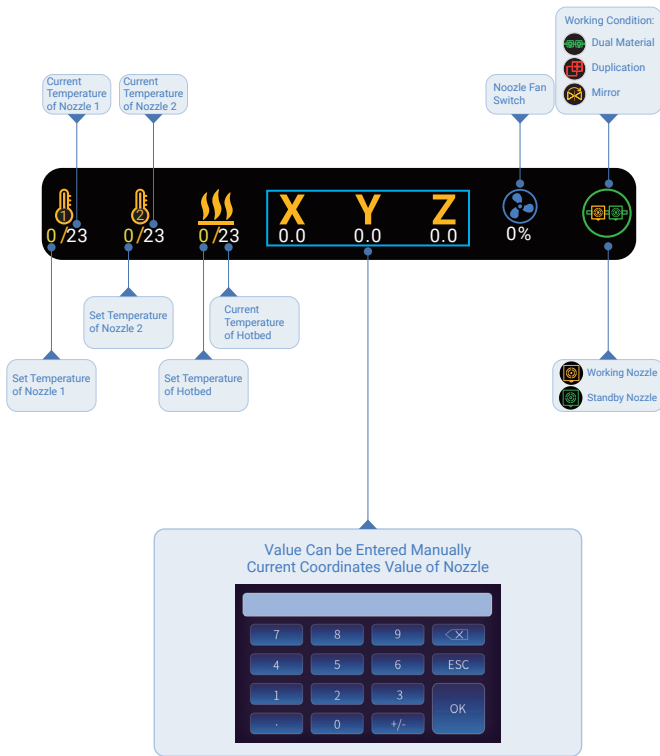
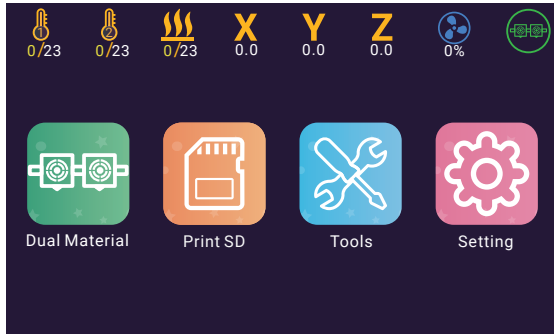


5. Enable Filament Runout Detection

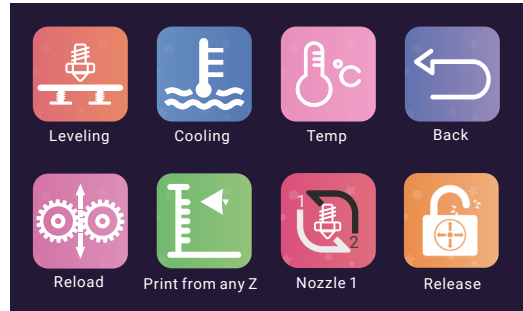


Finish



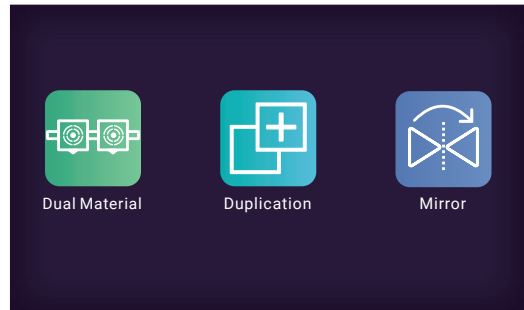


Click on Tool button, you can get:
 Semi-automatic Leveling
 Preheat PLA ABS
 Filaments Reload
 Printing from any Height etc.



Dual Material

Click on Dual Material button, you can switch the print mode:



Setting

Click on Setting button, you can configure the printer:

X Y Z E Steps : The values of Steps per millimeter of each axis
 X2 Y2 Z2 : Nozzle Offset of Nozzle 2 Relative to Nozzle 1
 Fan2 Temp : Set the startup temperature of Nozzle Cooling Fan
 Fan2 Speed : Speed of Nozzle Cooling Fan



1 How to Level



Scan Code to Watch

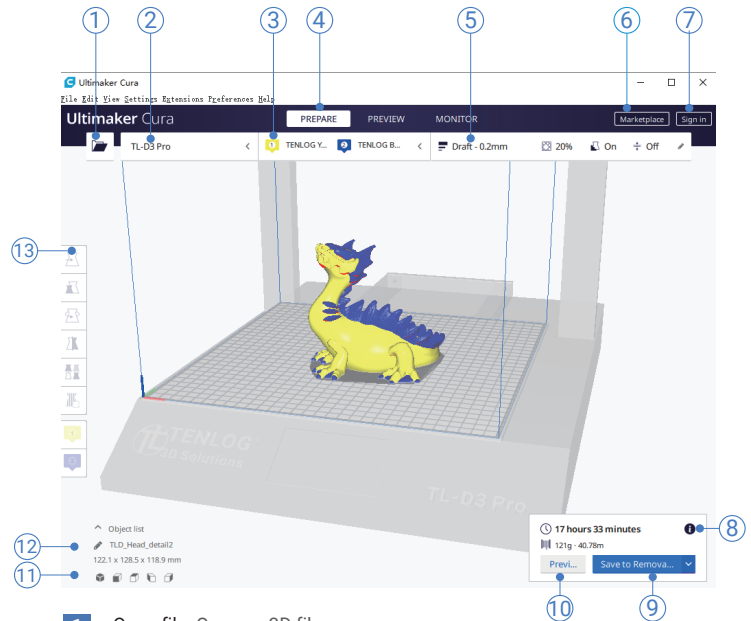
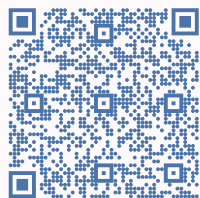
2 How to Set Nozzle Offset



3 How to Use



4 How to Use Borosilicate Glass Bed



- 1 Open file. Opens a 3D file.
- 2 Printer selection panel. Displays the selected printer.
- 3 Configuration panel. Contains the material and print core setup.
- 4 Stages. The prepare. Preview and monitor stage. Each stage is arranged to efficiently go through each 3D printing step.
- 5 Print settings panel. Contains all slice strategy parameters.
- 6 Marketplace. Contains plugins and material packages.
- 7 Ultimaker account. Allows access to cloud functionality, Marketplace plugins and print profiles, backups and more.
- 8 Action panel. Contains an action button dependent on the current stage.
- 9 Print over network. Save to removable disk or save to file.
- 10 Preview. Proceeds to the next stage, the preview stage.
- 11 Camera position tool. Easily positions the camera to default show default viewing angles.
- 12 Model information. Contains the 3D model name and dimensions of all printable models on the build plate.
- 13 Adjustment Tools. This allows you to easily position, scale, and rotate models on the build plate in the most efficient way.