

**FREE**  
PATTERN

**Freshly Made** to bring your ideas to life.



## Pillow Case (D-009) by Camelot Design Studio

Difficulty Level: Beginner

Finished Size: Cutting instructions for standard, queen  
and king size pillows



Exclusive Project Design by Camelot Design Studio.  
The direction of the fabrics in the digital imagery may not be accurate to the final product.  
©Disney

**THE MUPPETS**

### - COLLECTION -

Fabric requirements  
(for 1 pillow slip)



Main: 85320101 02  
1 yard



Accent: 85320101 01  
1/3 yard



Piping: 85320102 02  
1/8 yard



camelotfabrics.com  
info@camelotfabrics.com

COLLECTION  
The Muppets

### Other Supplies

- sewing machine
- needle & coordinating thread
- iron & pressing surface
- fabric shears
- straight pins
- measuring tape

### Notes:

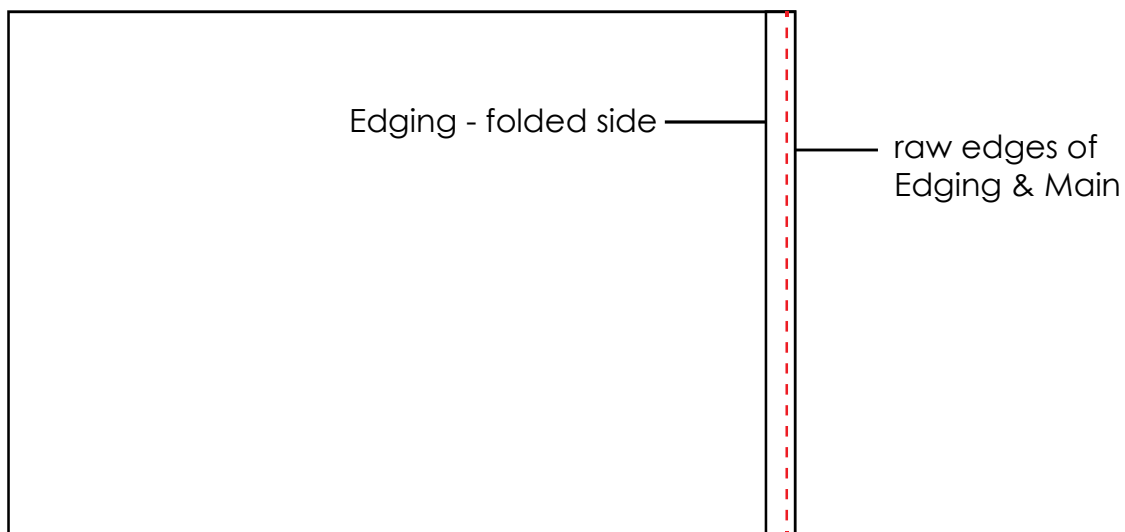
- Please wash, dry & iron your fabric before beginning.
- Unless otherwise noted, sew all seams with a 1/2" seam allowance.
- The pillowcase is sized to fit regular bed pillows as follows: Standard (Queen, King). Where no brackets are used, the piece is the same size for all three types of pillow.

### Cutting

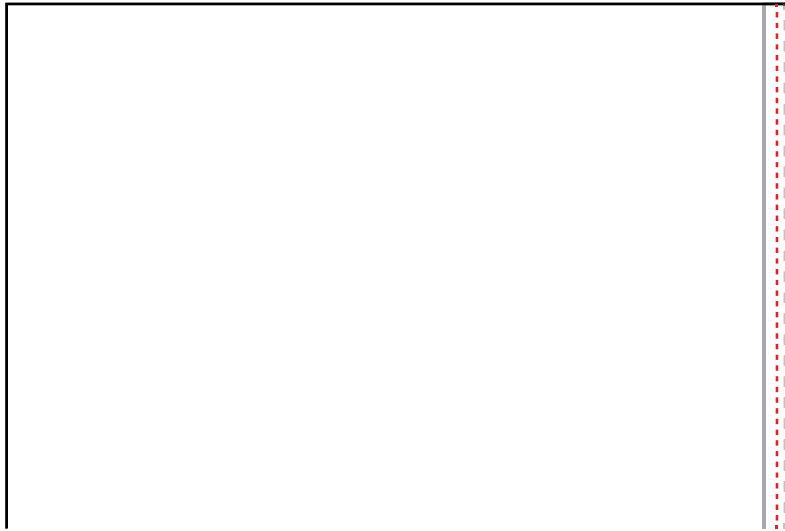
1. Cut a 26" (32", 38") x 36" rectangle from your Main fabric.
2. Cut a 9" x 36" rectangle from your Accent fabric.
3. Cut a 2" x 36" strip from your Edging fabric. Fold this strip in half lengthwise, Wrong Sides together, and press the crease.

### Assembly

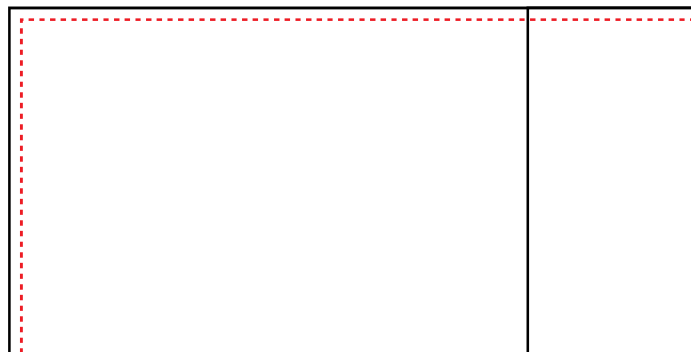
1. Baste the long raw edge of the Edging to one 36" edge of the Main fabric, against the Right Side of the Main fabric. Use a 1/4" seam allowance.



2. Sew the Accent fabric to the Main fabric along the same edge, with the Edging sandwiched between them. Press your seam allowance toward the Main fabric, with the Edging lying toward the Accent fabric on the pillowcase's Right Side.



3. Fold the work in half with the Right Sides together, so that the ends of the Edging meet each other. Sew the bottom and side of the pillowcase, backstitching at either end of the seam, but leave the top open as shown. Clip your sewn corners and press the seams open.



4. With the pillowcase still inside-out, turn back & press a 1/2" hem at its open end, Wrong Sides together. Hand-stitch the hemmed edge to the seam allowance where your Accent fabric, Edging and Main fabric are joined.

5. Turn the pillowcase Right Side out and slip it over your pillow.