

COMMERCIAL METALWORK SERIES**SMC20EWB****General Description**

The McBride SMC20EWB is a heavy duty surface mount back box designed to provide a sturdy baffle mount, speaker protection and back wave cancellation in installations where the surface mounting of public address speakers is required.

The SMC20EWB is constructed of heavy gauge steel for extra rigidity and resistance to corrosion. Industry standard baffle mounting dimensions will accept all 12-1/2" square McBride baffles. The SMC20EWB is finished in a tough, satin white, baked powder-coat epoxy.

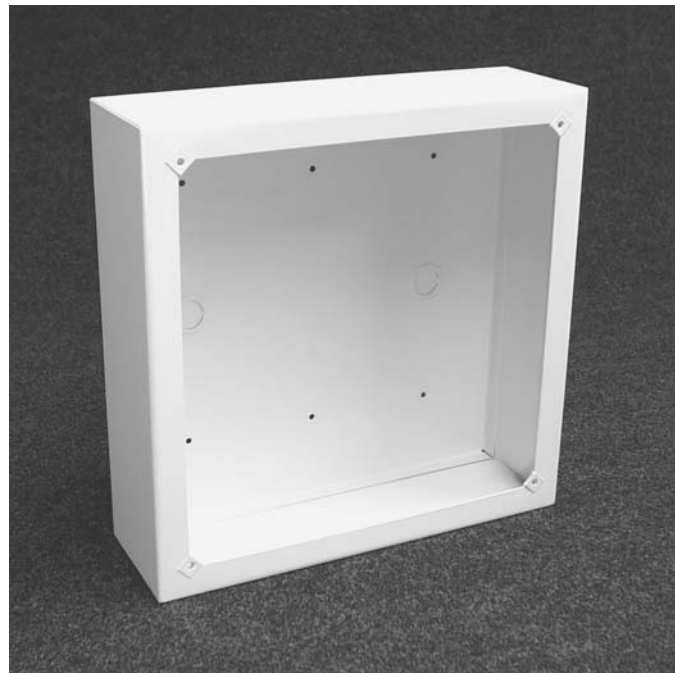
The SMC20EWB is designed for surface mounting on either ceilings or walls. It is also ideal for mounting square ceiling speaker assemblies in open ceiling architecture, where roof trusses, beams and/or girders have been left exposed.

Features include:

- Two combination 1/2"-3/4" knockouts on rear panel.
- Six 1/4" diameter mounting holes on rear panel.
- Optional fibreglass insert cancels resonance and improves low frequency response.

Architectural Specifications**Model SMC20EWB**

The surface mount back box shall be a McBride SMC20EWB. The surface mount back box shall have a solid steel rear panel and shall be entirely constructed of heavy gauge steel. The surface mount back box shall measure 12-7/8" inches square and 4 inches deep. Four baffle mounting holes shall be provide on the front of the back box on a 11 inch by 11 inch square pattern. Four #8 clip-on nuts shall be provided to accept the baffle mounting screws. Two combination 1/2-3/4 inch knockouts shall be provided on the rear panel spaced on 8-3/16 centers. Six 1/4" diameter mounting holes centered on an 8 inch by 8 inch square pattern shall be provided on the rear panel. The enclosure shall be finished in satin white baked powder-coat epoxy. The optional sound deadening insert shall be a 1 inch thick acoustic fibreglass pad glued to the inside of the rear panel.

**Technical Specifications**

Model Number:	SMC20EWB
Back Box Type:	Square surface mount enclosure with steel back.
Back Box Mtg:	Six 1/4" holes on rear, 8" x 8" pattern.
Baffle Mounting:	4 clip-on nuts on 11" x 11" centres
Dimensions:	12-7/8" square x 4" deep.
Dampening:	Optional 1" thick acoustic fibreglass pad.
Weight:	4-1/4 lbs.
Finish:	Satin white baked powder-coat epoxy.
Packaging:	10 per carton.



Distributed in Canada by:

Tel: (519) 884-3500

Fax: (519) 884-0193

LOUDSPEAKER SOURCE LTD.

638 COLBY DRIVE, WATERLOO, ONTARIO, CANADA • N2V 1A2