



Frank Webb
Home

BATH ▪ KITCHEN ▪ LIGHTING

Planning Guide

Let's get started!

Whether you are remodeling or building from scratch, Frank Webb Home showrooms will help you create a room you'll love for years to come.



Frank Webb
Home[®]

BATH ▪ KITCHEN ▪ LIGHTING

frankwebb.com

Building or remodeling?

Sinks, faucets, vanities, tubs, lighting and accessories – you’ve got a lot to think about! Frank Webb Home showrooms make things simple by taking you through your project step-by-step. We’ll help you choose the products that work for you, within your budget and your timeframe, to create the look you want.

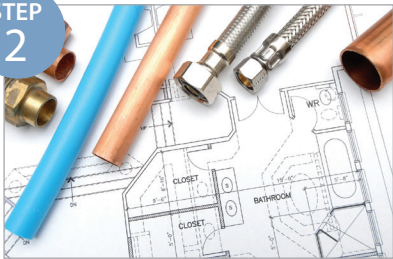
STEP
1



Define your goals.

Will you update the existing layout with new fixtures? Or redesign/expand the room? Take into account short- and long-term effects, such as the needs of everyone who will use the room and your home’s resale value.

STEP
2



Get it on paper.

A visual representation of your space is essential to choosing the perfect products. You may already have plans or blueprints. If not, just use the attached graph paper to sketch the layout of your room. Take as many measurements as possible. Each box represents one square foot. Don’t forget to note doors and windows.

STEP
3



Gather ideas.

Look online and through magazines. Talk to friends. Build a picture file of rooms, products and floor plans that catch your eye. Don’t limit yourself to what you think you can afford just yet. This idea file will help you define a look and feel that reflects your tastes and will serve as a reference point throughout your project. Make sure to bring these ideas with you when you are ready to begin your project.

STEP
4



Set a budget.

You know what you like, and you’re getting a sense of how different products will serve your family’s needs. It’s time to determine how much you want to spend for your project. Your Frank Webb Home showroom consultant is an expert at matching the look you want to the amount you’ve decided to invest.

My budget is: \$ _____

STEP
5



Make an appointment.

Visit frankwebb.com for locations, hours, and contact information.

Frank Webb Home Planning Sheet

Name: _____

Project Start Date: _____

Address: _____

General Contractor: _____

Phone: _____

Plumber: _____

Email: _____

Adding Space: Kitchen Bath Renovating for Aging in Place
Building New: Kitchen Bath Other
Renovating: Kitchen Bath Other

Bathroom Checklist

Fixture

Finish and Color: _____

Tub

Size: _____

- Drop In Air Jet
 Undermount Whirlpool
 Alcove Combination
 Apron Free Standing

Tub Fixtures

- Floor Mount Tub Shower Set
 Deck Mount Shower Door

Shower

Size: _____

- Alcove Linear Drain
 Corner Unit Decorative Drain
 Barrier-Free Low Threshold

Shower Fixtures

- Hand Held Rain Head
 Showerhead Steam
 Body Sprays Seat

Toilet

- 1 Piece Regular Height
 2 Piece Comfort Height
 Round Bidet/Washlet Seat
 Elongated
 Wall Hung

Sink

- Drop-In Pedestal
 Undermount Vessel
 Wall Hung Qty: _____

Faucet

- Single Handle Wall Mount
 4" Spread Vessel
 8" Spread Qty: _____

Accessories

Finish: _____

- Towel Bar Length(s): _____
 TP Holder Towel Warmer
 Soap Dish Grab Bar(s)
 Robe Hook Electric Radiant Heat
 Shower Rod Other: _____
 Glass Shelf
 Shower Baskets
 Magnifying Mirror

Furniture/Cabinets

Vanity Width: _____

Depth: 18" 21"

Finish (color): _____

- Medicine Cabinet Linen Cabinet
 Overtilet Cabinet Mirror Only
 Hardware: _____

Countertop

Color: _____

- Quartz Granite
 Solid Surface Marble
 Wood Cultured Marble
 Engineered Stone

Lighting & Ventilation

Finish: _____

- Sconce Vent Fan Only
 2-Light Recessed Shower Lighting
 3-Light Vent Fan/Light Combo
 4-Light Fan/Heat Combo
 Pendant
 Chandelier

Exterior Lighting

- Entrance Way
 Landscape
 Security/Flood

Notes

Frank Webb
Home

BATH ■ KITCHEN ■ LIGHTING

Kitchen Checklist

Sink Style

- Single
- Double
- Triple
- Bar
- Drop-In
- Undermount
- Farm/Apron

Sink Material

- Stainless Steel
- Copper
- Solid Surface
- Fireclay
- Granite/Resin
- Other:

Faucetry

- Finish: _____
- Single Handle
 - Two Handle
 - 3 Hole
 - 4 Hole
 - Pull Out
 - Pull Down
 - Side Spray
 - Filtration
 - Instant Hot Water Dispenser
 - Pot Filler

Sink Accessories

- Bottom Grid
- Basket Strainer
- Soap Dispenser
- Cutting Board
- Garbage Disposal
- Wall Switch Disposal
- Water Filtration
- Other: _____

Lighting

- Under Cabinet
- Pendant
- Task/Recessed
- Ceiling
- Chandelier

Draw your space. Each space represents one square foot. Be sure to include doors and windows.

A large grid of 20 columns and 20 rows for drawing a kitchen layout. Each square represents one square foot.

Visit Frank Webb Home. We're here to help.

Beautiful interactive showrooms with many live working displays

■
Knowledgeable, friendly staff

■
Wide variety of high-quality products to suit every budget and style

■
Fast and free delivery, guaranteed quality, on-going service

■
Trade relationships throughout the Northeast




Frank Webb
Home®

BATH ▪ KITCHEN ▪ LIGHTING

Find your Frank Webb Home Showroom!

CONNECTICUT

Brookfield 06804
317 Federal Road
203-775-5050
Fax: 203-775-4130

 **Hartford 06114**
200 Locust Street
860-524-5552
Fax: 860-246-3718

Meriden 06450
30 Pomeroy Avenue
203-514-3488
Fax: 203-514-3499

Stamford 06902
200 Richmond Hill Avenue
203-325-1355
Fax: 203-325-8165

Waterbury 06708
737 Bank Street
203-757-8035
Fax: 203-757-8039

Waterford 06385
570 Vauxhall Street Ext.
860-629-5999
Fax: 860-444-9389

MAINE

 **Bangor 04401**
1156 Hammond Street
207-947-6333
Fax: 207-385-2555

Ellsworth 04605
9 Buttermilk Road
207-667-7841
Fax: 207-664-0201

Lewiston 04240
60 Lexington Street
207-784-4085
Fax: 207-784-6712

Oakland 04963
6 Highland Drive
207-716-1601
Fax: 207-872-0010

S. Portland 04106
150 Postal Service Way
207-541-3555
Fax: 207-773-4571

MASSACHUSETTS

Auburn 01501
33 Sword Street
508-757-7625
Fax: 508-757-8981

Bedford 01730
160 Middlesex Turnpike
781-791-2550
Fax: 781-761-7399

Bellingham 02019
37 South Maple Street
508-966-2252
Fax: 508-966-1999

Boston (South) 02127
307 Dorchester Avenue
617-933-0666
Fax: 617-367-1326


Brockton 02301
60 Industrial Boulevard
508-638-1000
Fax: 508-584-6418

Falmouth 02540
171 Worcester Court
774-255-4144
Fax: 508-540-6308

Gloucester 01930
51 Great Republic Drive
978-283-3355
Fax: 978-281-7016

Hyannis 02601
108 Breeds Hill Road
508-775-2130
Fax: 508-775-2179

Malden 02148
700 Broadway Street
781-873-3444
Fax: 781-333-2222

 **Methuen 01844**
98 Lindbergh Avenue
781-325-7140
Fax: 781-325-7139

Needham 02494
100 Highland Avenue
781-465-2436
Fax: 781-465-2438

Northampton 01060
135 Industrial Drive
413-586-8003
Fax: 413-586-6280

Plymouth 02360
39 Prestige Way
508-927-0025
Fax: 508-830-0481

Salem 01970
89 Margin Street
978-619-0270
Fax: 978-619-0271

Springfield 01104
145 Performance Boulevard
413-726-9950
Fax: 413-726-9951

NEW HAMPSHIRE

Concord 03301
46 Henniker Street
603-717-3085
Fax: 603-223-6585

Dover 03820
218 Knox Marsh Road
603-842-6888
Fax: 603-749-5572

Exeter 03833
18 Continental Drive
603-772-5475
Fax: 603-772-1866

Gilford 03249
302 Hounsell Avenue
603-524-2736
Fax: 603-527-1554

Lebanon 03766
55 Etna Road
603-448-9405
Fax: 603-306-8001

Manchester 03103
25 Union Street
603-627-1590
Fax: 603-668-7277

Nashua 03062
7 Redmond Street
603-883-3130
Fax: 603-595-7733

 **Seabrook 03874**
115 Lafayette Road
603-474-4650
Fax: 603-474-0412

NEW JERSEY

Elmwood Park 07407
261 U.S. Route 46 West
201-421-2955
Fax: 201-421-2990

Madison 07940
121 Kings Road
973-805-4882
Fax: 973-966-1469

Piscataway 08854
180 Centennial Avenue
732-393-7555
Fax: 732-393-7566

Pleasantville 08232
755 West Delilah Road
609-568-9397
Fax: 609-641-1985

PENNSYLVANIA

Allentown 18109
1665 East Race Street
484-488-3677
Fax: 484-488-3681

RHODE ISLAND

Warwick 02888
101 Jefferson Boulevard
401-463-7999
Fax: 401-463-3303

VERMONT

Rutland 05701
3089 Cold River Road
802-775-1022
Fax: 802-770-5323

Williston 05495
80 Park Avenue
802-879-6018
Fax: 802-879-4848

NEW YORK


Albany 12204
17 Erie Boulevard
518-455-8833
Fax: 518-455-8788

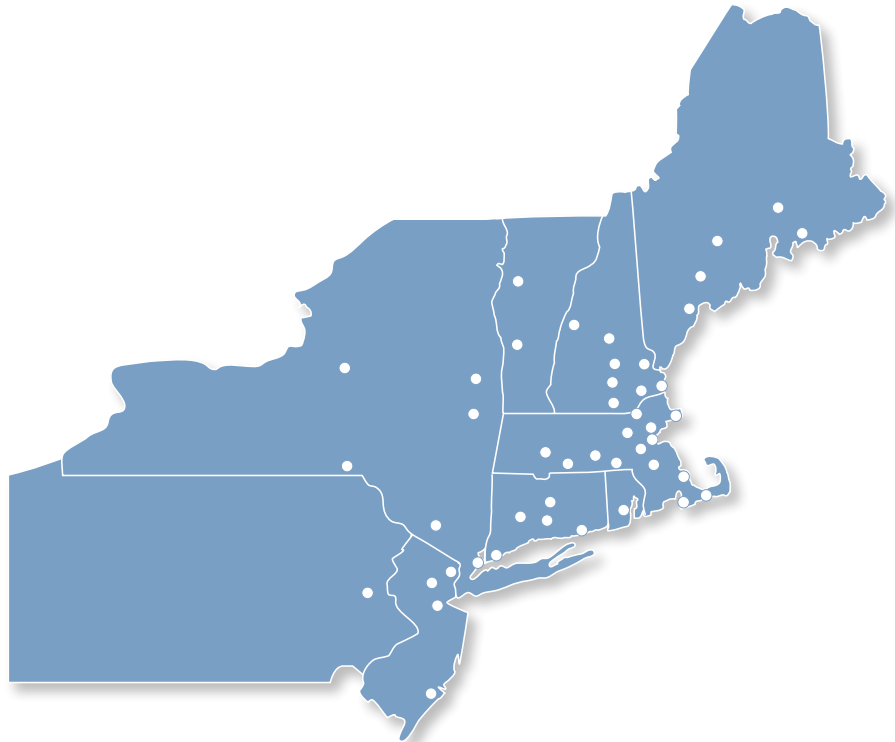
 **Ballston Spa 12020**
1 McCrea Hill Road
518-490-7550
Fax: 518-490-7551


Binghamton 13904
62 Griswold Street
607-724-4318
Fax: 607-724-4375

Mamaroneck 10543
1020 Mamaroneck Avenue
914-835-2300
Fax: 914-835-5215

Newburgh 12550
600 Corporate Boulevard
845-567-3803
Fax: 845-567-6019

 **Syracuse 13211**
6792 Townline Road
315-552-9599
Fax: 315-552-9575



 Showroom features Accessible Living Bath and Kitchen products.

Visit our Hearth & Home Showroom in Haverhill:

270 Neck Road
Ward Hill Business Park West
Haverhill, MA 01835
978-373-7222
Fax: 978-373-7723

