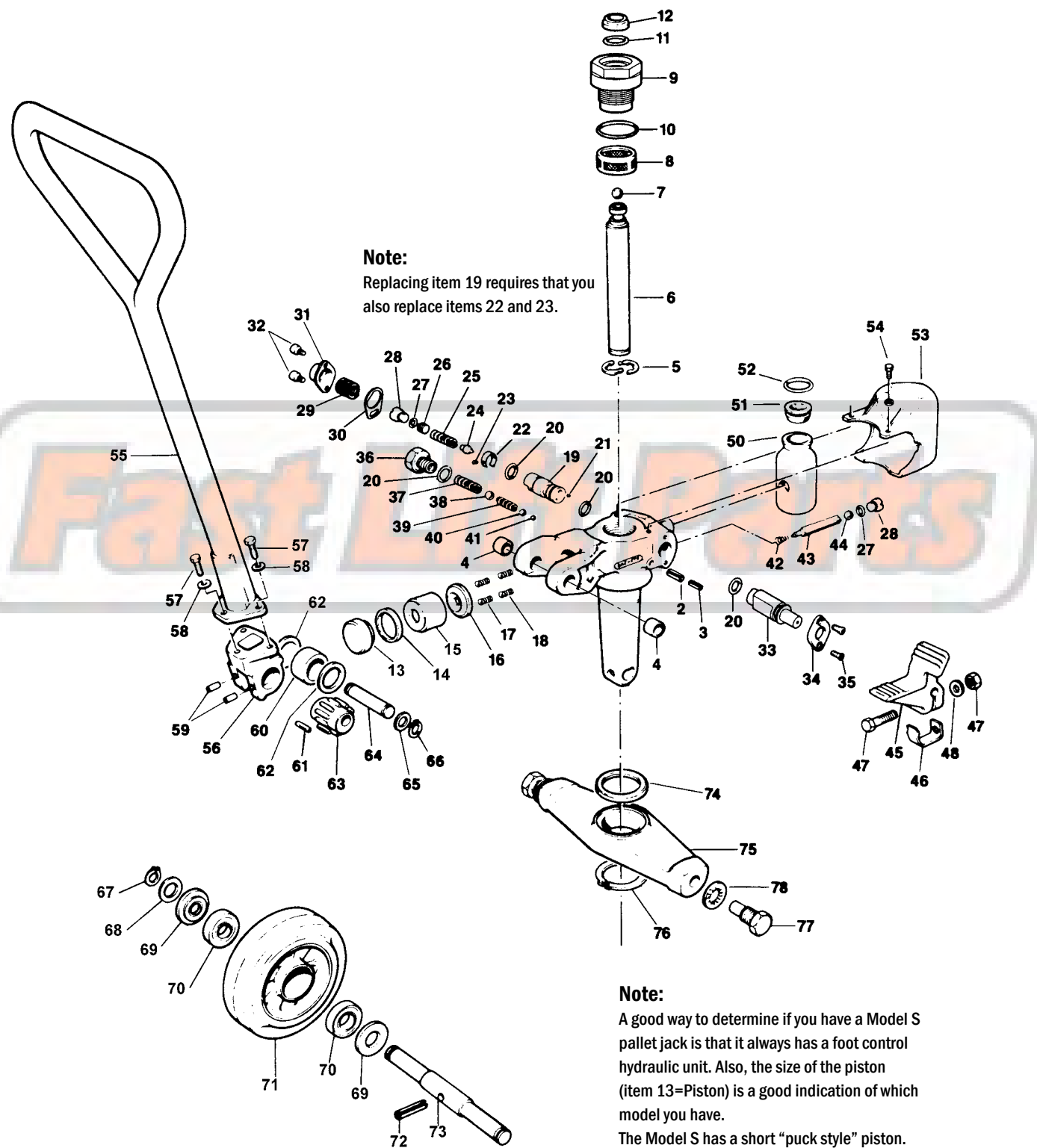


Multiton S Foot Control Hydraulic Unit



Multiton S Foot Control Hydraulic Unit

Item	Part No.	Description
2	192151	Roll Pin
3	192125	Roll Pin
4	23163	Bushing
5	820620	Locking Ring
6	20178	Ram
7	06750071	Ball
8	20599	Filter
9	20179	Top Nut
10	A B 100975	O-Ring
11	A B 102176	O-Ring
12	A B 20369	Scraper
13	26382	Piston
14	A B 26381	Seal
15	A B 20238	Diaphragm
16	20174	Washer
17	A 3647	Spring
18	A 20594	Spring
19	19740	Valve
20	A B 100997	O-Ring
21	A 820207	Ball
22	20597	Spring Clip
23	190953	Rivet
24	19744	Valve
25	A 19750	Spring
26	19745	Set Screw
27	A B 100988	O-Ring
28	21573	Screw Plug
29	19349	Spring
30	20387	Locking Ring
31	20194	Cover
32	190691	Bolt
33	20177	Pedal Shaft
34	20193	Shaft Lock
35	190906	Screw
36	20200	Screw Plug
37	A 20188	Spring
38	A 820215	Ball
39	A 19350	Spring
40	A 820212	Ball
41	A 820206	Ball
42	20377	Spring
43	20175	Cam
44	A 820209	Ball
45	20191	Pedal
46	20595	Spring

Item	Part No.	Description
47	190049	Bolt and Nut
48	0565005	Lock Washer
50	A 21660	Reservoir
51	A 21675	Filler Plug
52	A B 101003	O-Ring
53	20245	Cowling
54	A B 04459023	Screw
55	39294	Handle Frame
56	19819	Handle Bracket
57	04059078	Bolt
58	192302	Lock Washer
59	19812	Pin
60	36591	Bearing Sleeve
61	80675	Bearing Needle (45 Needles Required)
62	36592	Washer
63	21352	Eccentric
64	21351	Handle Pin
65	21353	Washer
66	A B 820495	Snap Ring
67	A 06259060	Snap Ring
68	35681	Washer
69	20301	Washer
70	820018	Bearing
71	800-P-HD	Steer Wheel Assembly, Red Ultra-Poly On Aluminum Hub W/ Bearings
	800-P-ST	Steer Wheel Assembly, Poly On Nylon Hub W/ Bearings
	800-N	Steer Wheel Assembly, Nylon W/ Bearings
	800-S	Steer Wheel Assembly, Steel W/ Bearings
72	05759018	Roll Pin
73	20231	Axle
74	28087	Traverse Bearing
75	28086	Traverse
76	06259058	Snap Ring
77	20218	Shoulder Bolt
78	05659038	Lock Washer
KITS	A 21719	Seal Kit
KITS	B 21719-SLIM	Slim Seal Kit