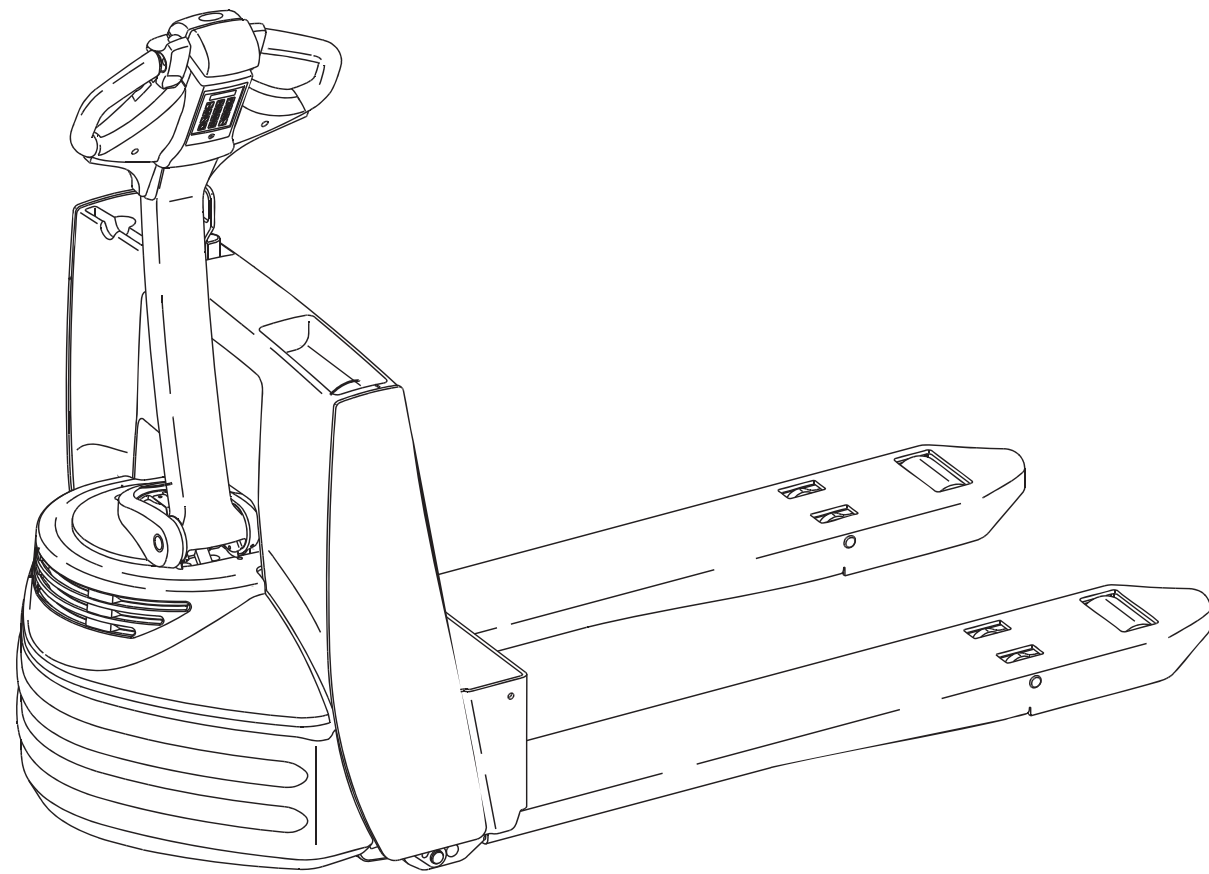


Replacement Parts for Toyota 7HBW23 Walkie



Contents

Quick Wheel Lookup	4
Electrical System Components Battery Connector, Motor Controllers	6
Drive Unit Drive Motor Parts, Brake Assembly	8
Control Handle Arm, Throttle Assembly	10
Hydraulic System	12
Frame and Undercarriage	14

Quick Wheel Lookup

Quick Wheel Lookup

OEM #	Description	Wheel OD in/mm	Tread Width in/mm	Hub Width in/mm	Hub ID in/mm	Bearing ID in/mm	Bearing #	Material/ Color
TO 00590-47623-71	Load Wheel, Poly 95A	3.25 / 82.5	4.00 / 101.5	4.50 / 114	2.047 / 52	0.984 / 25	BS62052RS	Scotch, 95A
TO 00590-47623-71-A	Load Wheel Assembly, Poly 95A	3.25 / 82.5	4.00 / 101.5	4.50 / 114	2.047 / 52	0.984 / 25	BS62052RS	Scotch, 95A
TO 00590-43299-71	Bearing (2RS)							
TO 00590-46883-71	Drive Tire, Smooth Flat Rubber	10.00 / 254	4.00 / 101.5	5.00 / 127	6.5 / 165.1			Rubber
TO 00590-46881-71	Drive Tire, Smooth Flat Poly 95A	10.00 / 254	4.00 / 101.5	5.00 / 127	6.5 / 165.1			Poly, 95A
TO 00590-43421-71	Drive Tire Hub							
TO 00590-43422-71	Lug Nut							
TO 00590-43318-71	Caster Wheel Assembly	2.50 / 63.5	2.375 / 60.25	2.375 / 60.25	1.181 / 35	0.50 / 12.70	BS16212RS	Poly, 95A

TO 00590-47623-71
Load wheel , Poly, 95A



TO 00590-43299-71
Bearing



TO 00590-46881-71
Drive tire, Poly 95A



TO 00590-43318-71
Caster wheel assembly



TO 00590-47623-71-A
Load Wheel assembly Poly 95A
includes bearings, washers



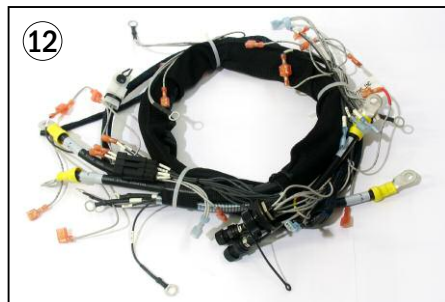
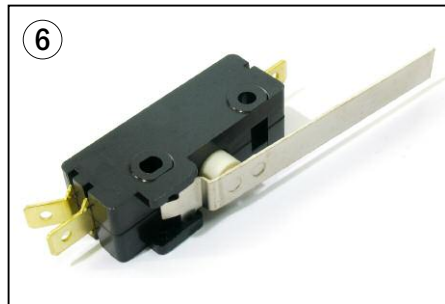
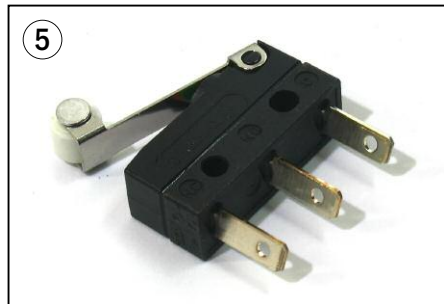
TO 00590-46883-71
Drive tire, smooth flat rubber



TO 00590-43422-71
Lug nut



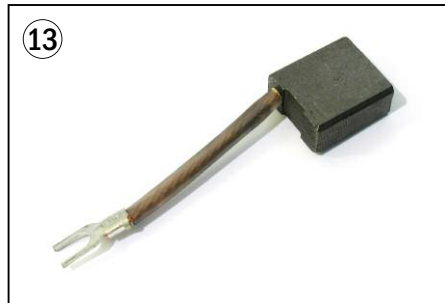
Electrical - Battery Connector, Motor Controllers



Electrical - Battery Connector, Motor Controllers

Item	Part No.	Description
1	TO 00590-40800-71	Battery Connector SB175 Gray
	TO 00590-05125-71	Battery Connector SB350 Gray
	TO 00590-40975-71	Battery Connector SB175 Yellow
	TO 00590-47621-71	Battery Connector SB350 Yellow
	TO 00590-40416-71	Battery Connector SB175 Red
	TO 00590-05126-71	Battery Connector SB350 Red
	TO 00590-40951-71	Battery Connector SB175 Blue
2	TO 00590-47622-71	Battery Connector SB350 Blue
	AN 256	Disconnect Handle, Inc Screws & Nuts
3	TO 00590-40983-71	Rocker On/Off Switch
4	TO 00590-40978-71	Key Switch, Inc. 2 Keys
5	TO 00590-43472-71	Switch
6	TO 00590-43475-71	Lift Limit Switch
7	TO 00590-47055-71	Controller
8	TO 00590-43450-71	Main Contactor
9	TO 00590-40042-71	Relay
10	TO 00590-43457-71	Circuit Breaker
11	TO 00590-41941-71	Horn
12	TO 00590-47605-71	Main Harness
13	TO 00590-43482-71	Head Harness
14	TO 00590-43555-71	Fuse, 10 Amp
15	TO 00590-43559-71	Fuse, 80 Amp

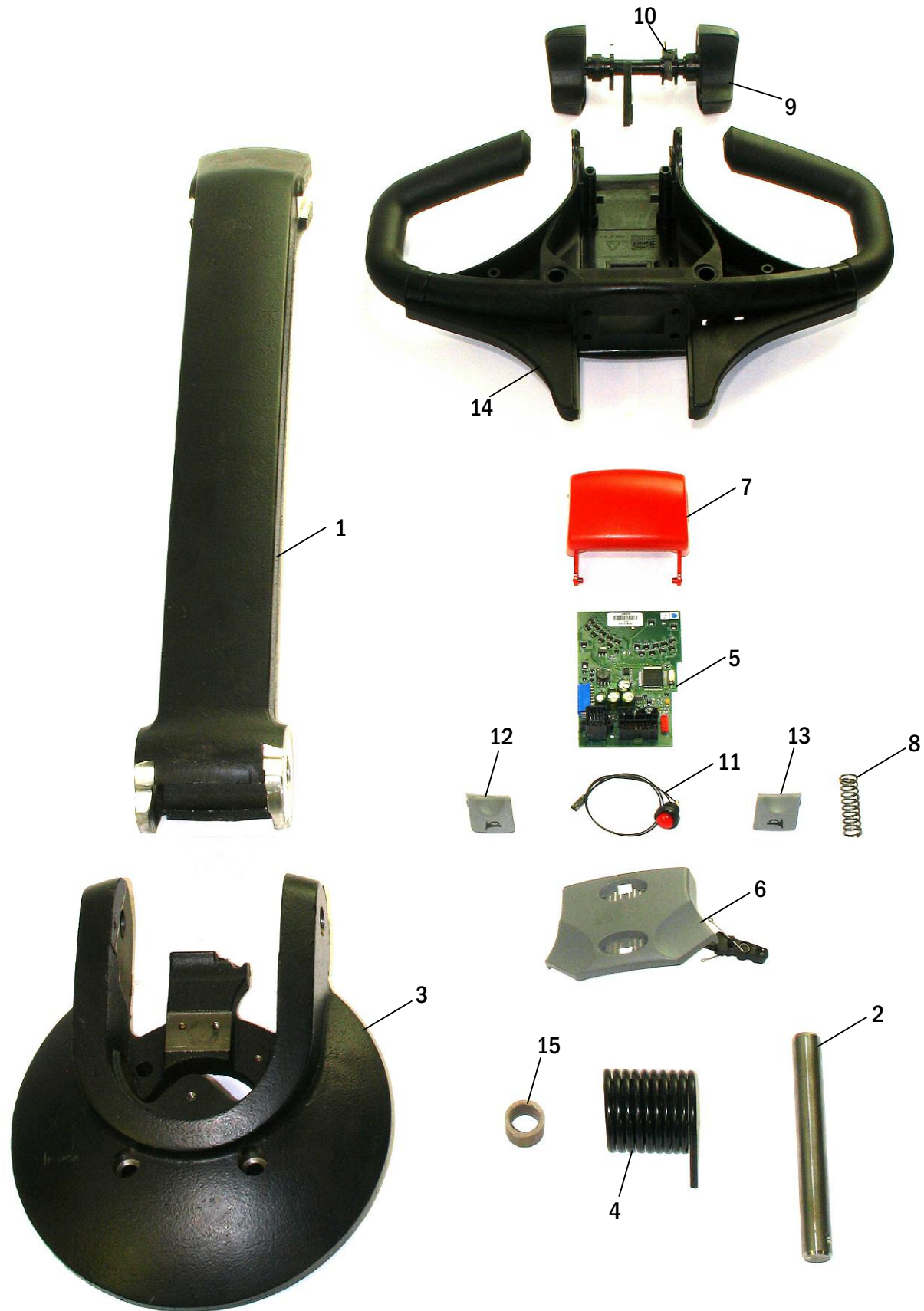
Drive Unit - Drive Motor Parts, & Brake



Drive Unit - Drive Motor Parts, & Brake

Item	Part No.	Description
1	TO 00590-43295-71	Drive Unit & Motor Assembly (not shown)
2	TO 00590-43396-71	Drive Axle
3	TO 00590-43428-71	Seal
4	TO 00590-43429-71	Bearing, Drive Axle
5	TO 00590-43430-71	Spacer
6	TO 00590-43373-71	Armature (not shown)
7	TO 00590-43375-71	Seal
8	TO 00590-43404-71	Shim
9	TO 00590-43403-71	Bearing
10	TO 00590-43401-71	Field Coil
11	TO 00590-43364-71	Bearing
12	TO 00590-43370-71	Brush Holder
13	TO 00590-43372-71	Brush
14	TO 00590-43371-71	Spring
15	TO 00590-43369-71	Cover
16	TO 00590-43367-71	Band
17	TO 00590-43446-71	Brake Assembly (not shown)

Control Handle - Arm, Throttle Assembly



Control Handle - Arm, Throttle Assembly

Item	Part No.	Description
1	TO 00590-47607-71	Tiller
2	TO 00590-43296-71	Pin, Tiller
3	TO 00590-43284-71	Mount, Stem
4	TO 00590-43290-71	Return Spring
5	TO 00590-47051-71	Control Card
6	TO 00590-42462-71	Lift Lower Button
7	TO 00590-47054-71	Reverse Button
8	TO 00590-42420-71	Spring
9	TO 00590-43360-71	Thumb Wheel Assembly
10	TO 00590-42422-71	Spring
11	TO 00590-42456-71	Horn Switch
12	TO 00590-42429-71	Horn Button, Right
13	TO 00590-42430-71	Horn Button Left
14	TO 00590-43298-71	Handle
15	TO 00590-43300-71	Bushing
16	TO 00590-46381-71	Control Handle Assembly

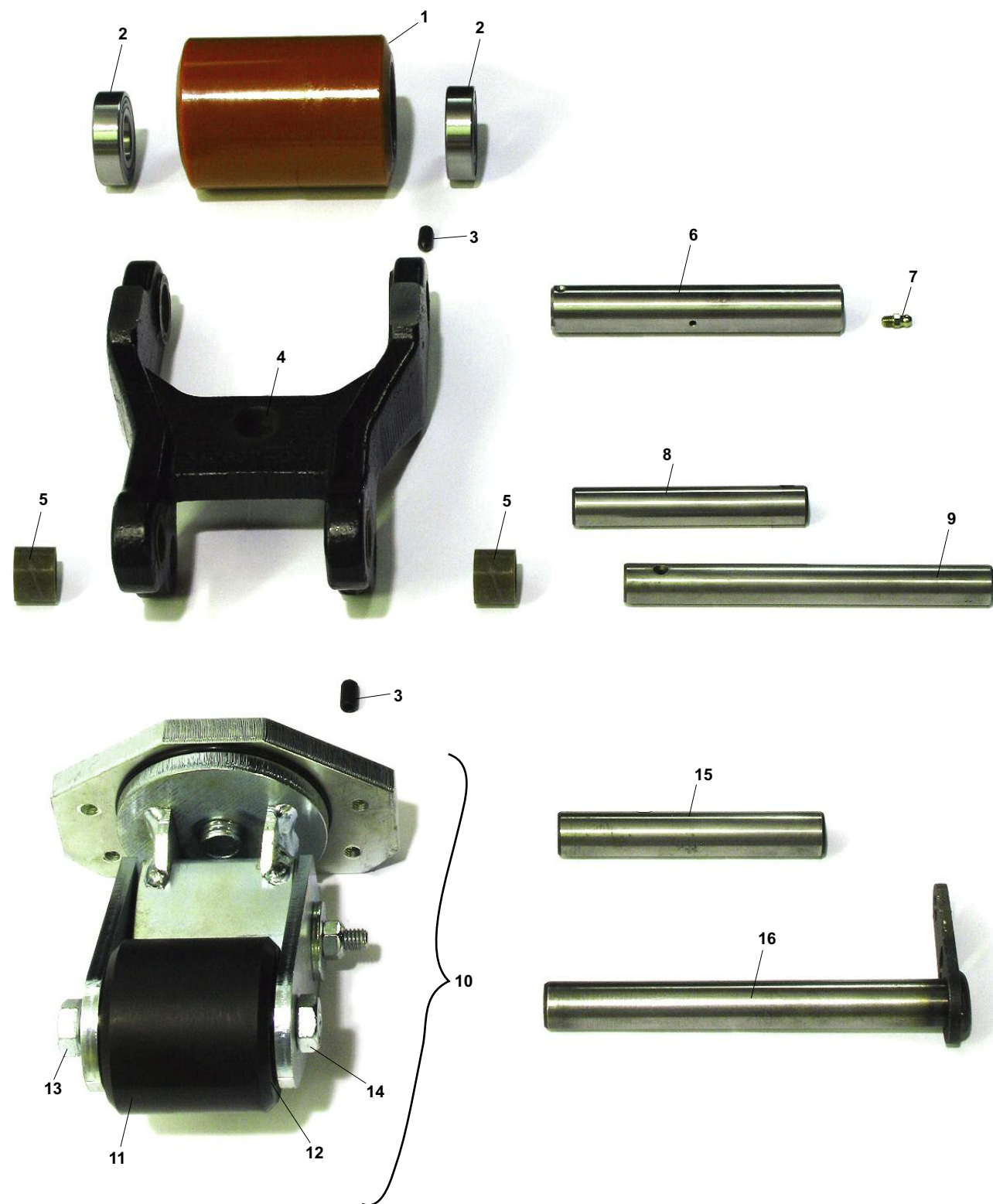
Hydraulic System



Hydraulic System

Item	Part No.	Description
1	TO 00590-43461-71	Lift Pump & Motor Assembly
2	TO 00590-43392-71	Pump Motor Assembly
3	TO 00590-43393-71	Brush & Spring Kit
4	TO 00590-43405-71	Bearing
5	TO 00590-43508-71	Pump Kit
6	TO 00590-43462-71	Solenoid
7	TO 00590-43510-71	Release Valve Assembly
8	TO 00590-43503-71	Lift Cylinder Assembly
9	TO 00590-40809-71	Seal Kit, Lift Cylinder

Frame and Undercarriage



Frame and Undercarriage

Item	Part No.	Description	
1	TO 00590-47623-71	Poly Load wheel	95A Durometer
	TO 00590-47623-71-A	Poly Load Wheel Assembly	95A Durometer, Includes Bearings
	TO 00590-47623-71-XL	Poly Load Wheel	97A Durometer
	TO 00590-47623-71-XL-A	Poly Load Wheel Assembly	97A Durometer, Includes Bearings
2	TO 00590-43299-71	Bearing	
3	TO 00590-43271-71	Set Screw	
4	TO 00590-43543-71	Wheel Fork	
5	TO 00590-43276-21	Bushing	
6	TO 00590-43547-71	Load Wheel Axle	
	TO 00590-43548-71	Load Wheel Axle	Freezer/Corrosion Resistant (Greaseable)
7	TO 00590-00019-71	Grease Fitting	
8	TO 00590-43274-71	Pin	
	TO 00590-43275-71	Pin	Freezer/Corrosion Resistant
9	TO 00590-43326-71	Pivot Pin	
	TO 00590-43325-71	Pivot Pin	Freezer/Corrosion Resistant
10	TO 00590-43303-71	Caster Assembly	Includes Items 11-14
11	TO 00590-43318-71	Poly Caster Wheel Assembly	95A Durometer, Includes Bearings
	TO 00590-43318-71-XL	Poly Caster Wheel Assembly	97A Durometer, Includes Bearings
12	TO 00590-43317-71	Bearing	
13	TO 00590-43319-71	Axle Screw	
14	TO 00590-43315-71	Nut	
15	TO 00590-43358-71	Pin	
	TO 00590-43357-71	Pin	Freezer/Corrosion Resistant
16	TO 00590-43332-71	Pin	
	TO 00590-43342-71	Pin	Freezer/Corrosion Resistant



888-999-7715
www.fastliftparts.com