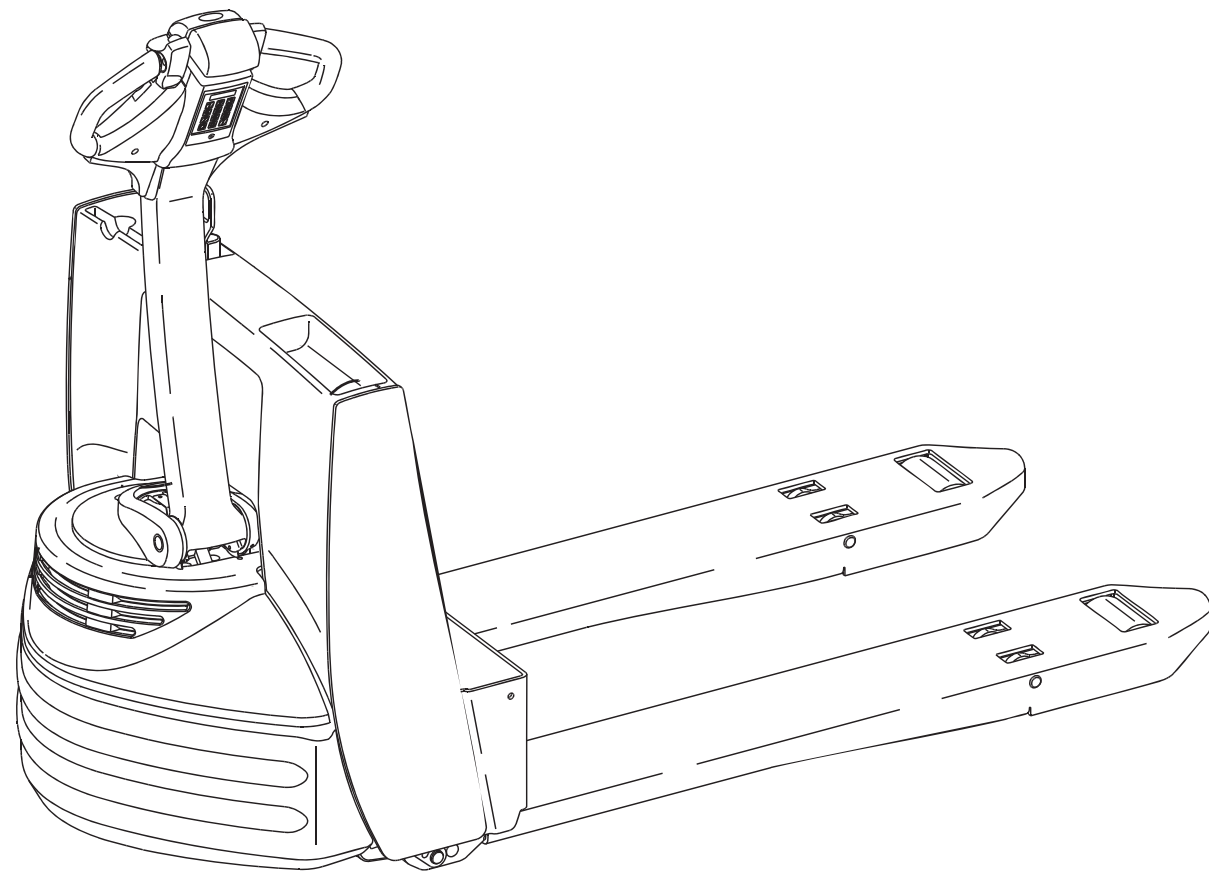


# Replacement Parts for Raymond 102XM Walkie



## Contents

<b>Quick Wheel Lookup</b>	4
<b>Electrical System Components</b> Battery Connector, Motor Controllers	6
<b>Drive Unit</b> Drive Motor Parts, Brake Assembly	8
<b>Control Handle</b> Arm, Throttle Assembly	10
<b>Hydraulic System</b>	12
<b>Frame and Undercarriage</b>	14

**Quick Wheel Lookup**

**Quick Wheel Lookup**

OEM #	Description	Wheel OD in/mm	Tread Width in/mm	Hub Width in/mm	Hub ID in/mm	Bearing ID in/mm	Bearing #	Material/ Color
RA 939-353-047	Load Wheel, Poly 95A	3.25 / 82.5	4.00 / 101.5	4.50 / 114	2.047 / 52	0.984 / 25	BS62052RS	Scotch, 95A
RA 939-353-047-A	Load Wheel Assembly, Poly 95A	3.25 / 82.5	4.00 / 101.5	4.50 / 114	2.047 / 52	0.984 / 25	BS62052RS	Scotch, 95A
RA 441-127	Bearing (2RS)							
RA 630-235	Drive Tire, Smooth Flat Rubber	10.00 / 254	4.00 / 101.5	5.00 / 127	6.5 / 165.1			Rubber
RA 632-090	Drive Tire, Smooth Flat Poly 95A	10.00 / 254	4.00 / 101.5	5.00 / 127	6.5 / 165.1			Poly, 95A
RA 939-353-075	Drive Tire Hub							
RA 939-353-077	Lug Nut							
RA 939-353-251	Caster Wheel Assembly	2.50 / 63.5	2.375 / 60.25	2.375 / 60.25	1.181 / 35	0.50 / 12.70	BS16212RS	Poly, 95A

**RA 939-353-047**  
Load wheel , Poly, 95A



**RA 441-127**  
Bearing



**RA 632-090**  
Drive tire, Poly 95A



**RA 939-393-251**  
Caster wheel assembly



**RA 939-353-047-A**  
Load Wheel assembly Poly 95A  
includes bearings, washers



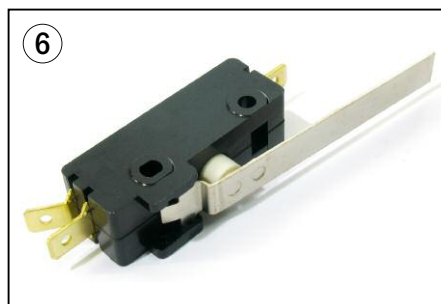
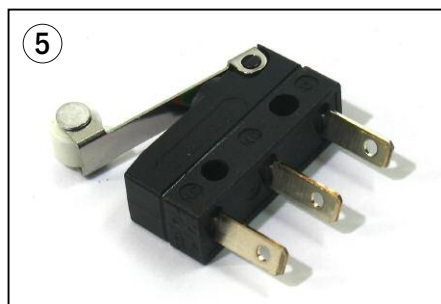
**RA 630-235**  
Drive tire, smooth flat rubber



**RA 939-353-077**  
Lug nut



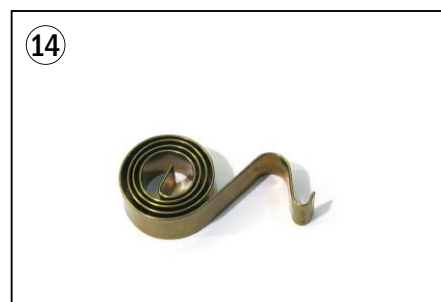
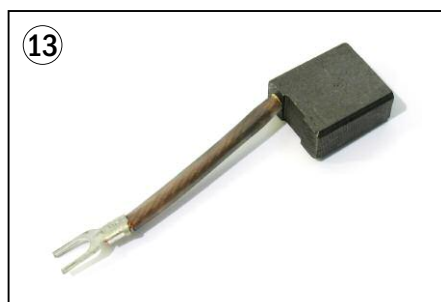
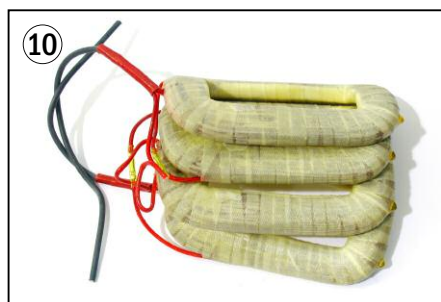
**Electrical - Battery Connector, Motor Controllers**



**Electrical - Battery Connector, Motor Controllers**

Item	Part No.	Description
1	RA 590-701	Battery Connector SB175 Gray
	RA 590-728	Battery Connector SB175 Blue
	RA 590-715	Battery Connector SB175 Red
2	RA 939-353-104	Disconnect Handle, Inc Screws & Nuts
3	RA 939-352-217	Master On/Off Switch
4	RA 851-200-055	Key Switch, Inc. 2 Keys
5	RA 939-353-033	Switch
6	RA 939-353-267	Lift Limit Switch
7	RA 939-353-059	Controller
8	RA 939-353-094	Main Contactor
9	RA 851-201-468	Relay
10	RA 939-352-250	Circuit Breaker
11	RA 939-353-039	Horn
12	RA 939-353-076	Main Harness
13	RA 939-353-134	Head Harness
14	RA 939-353-298	Fuse, 10 Amp
15	RA 939-353-299	Fuse, 80 Amp

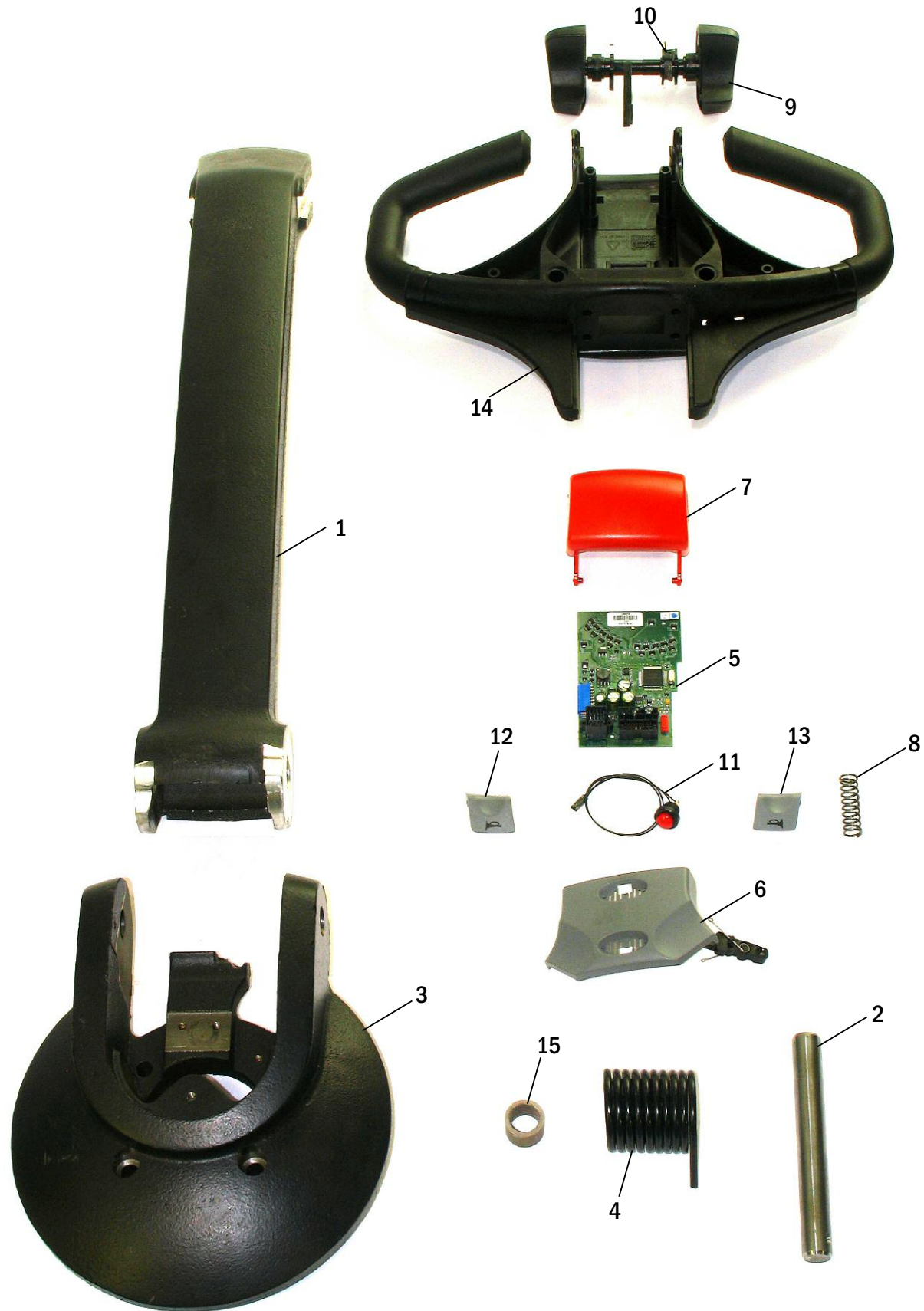
**Drive Unit - Drive Motor Parts, & Brake**



**Drive Unit - Drive Motor Parts, & Brake**

Item	Part No.	Description
1	RA 939-353-062	Drive Unit & Motor Assembly (not shown)
2	RA 939-353-187	Drive Axle
3	RA 939-353-188	Seal
4	RA 939-353-189	Bearing, Drive Axle
5	RA 393-353-229	Spacer
6	RA 939-353-209	Armature (not shown)
7	RA 939-353-208	Seal
8	RA 939-353-207	Shim
9	RA 939-353-206	Bearing
10	RA 939-353-204	Field Coil
11	RA 939-353-221	Bearing
12	RA 939-353-216	Brush Holder
13	RA 939-353-218	Brush
14	RA 939-353-217	Spring
15	RA 939-353-215	Cover
16	RA 939-353-212	Band
17	RA 939-353-190	Brake Assembly (not shown)

**Control Handle - Arm, Throttle Assembly**



**Control Handle - Arm, Throttle Assembly**

Item	Part No.	Description
1	RA 939-353-063	Handle Stem
2	RA 939-353-095	Handle Stem Pin
3	RA 939-352-245	Stem Mount
4	RA 939-353-074	Return Spring
5	RA 851-201-264	Control Card
6	RA 851-201-187	Lift Lower Button
7	RA 851-201-185	Reverse Button
8	RA 851-201-146	Spring
9	RA 939-353-081	Thumb Wheel Assembly
10	RA 851-201-148	Spring
11	RA 851-201-182	Horn Switch
12	RA 851-201-155	Horn Button, Right
13	RA 851-201-156	Horn Button Left
14	RA 939-353-082	Handle
15	RA 939-353-092	Bushing
16	RA 939-353-083	Control Handle Assembly (not shown)

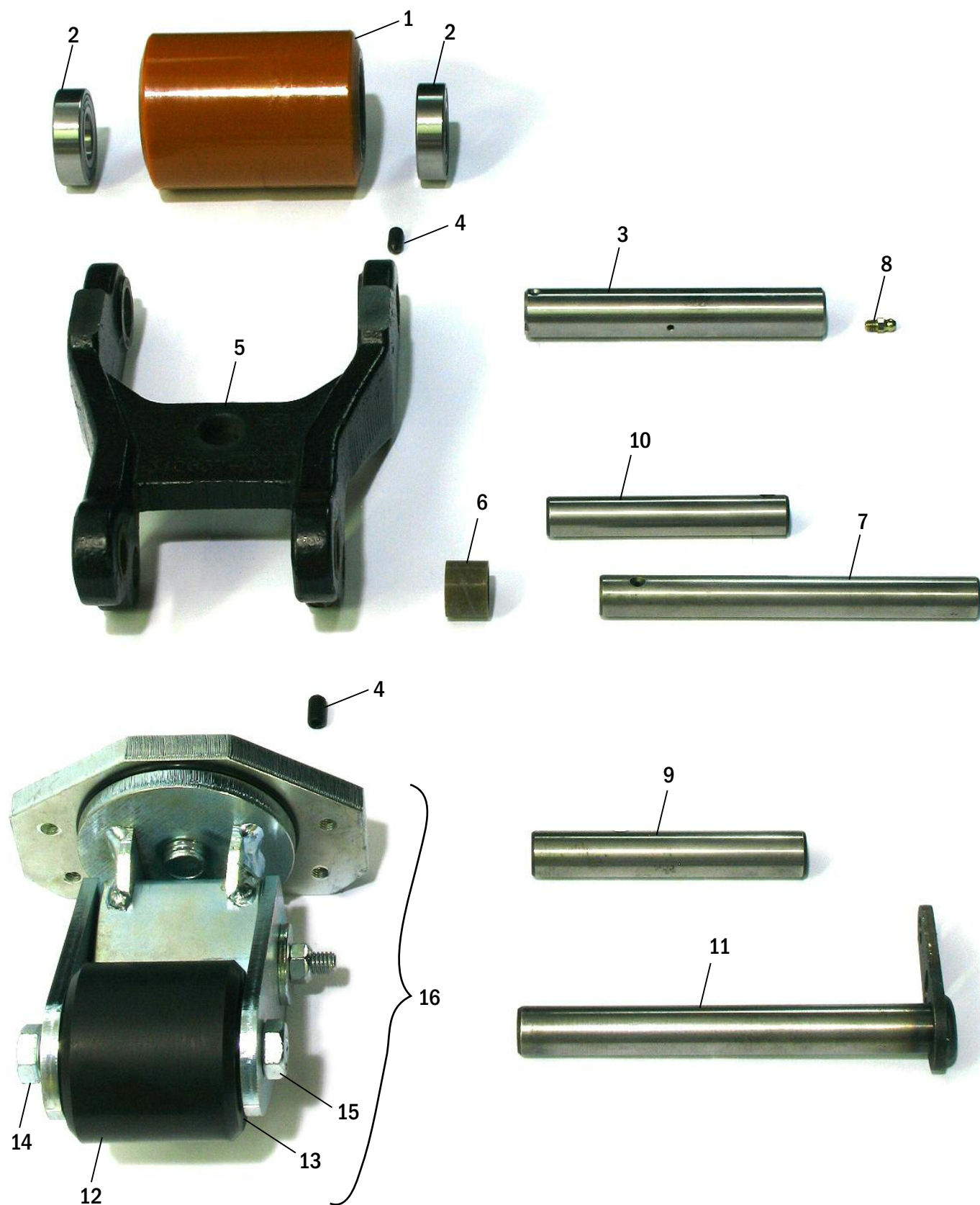
**Hydraulic System**



**Hydraulic System**

Item	Part No.	Description
1	RA 939-353-071	Lift Pump & Motor Assembly (not shown)
2	RA 939-353-171	Pump Motor Assembly
3	RA 939-353-183	Brush & Spring Kit
4	RA 939-353-184	Bearing
5	RA 939-353-165	Pump Kit (not shown)
6	RA 939-353-034	Solenoid
7	RA 939-353-014	Release Valve Kit (not shown)
8	RA 939-353-140	Lift Cylinder Assembly
9	RA 939-028	Seal Kit

**Frame and Undercarriage**



**Frame and Undercarriage**

Item	Part No.	Description	
1	RA 939-353-047	Poly Load wheel	95A Durometer
	RA 939-353-047-A	Poly Load Wheel Assembly	95A Durometer, Includes Bearings
	RA 939-353-047-XL	Poly Load Wheel	97A Durometer
	RA 939-353-047-XL-A	Poly Load Wheel Assembly	97A Durometer, Includes Bearings
2	RA 441-127	Bearing	
3	RA 939-353-050	Load Wheel Axle	
	RA 939-353-127	Load Wheel Axle	Freezer/Corrosion Resistant
4	RA 939-352-258	Set Screw	
5	RA 939-352-256	Wheel Fork	
6	RA 939-353-060	Bushing	
7	RA 939-353-051	Pivot Pin	
	RA 939-352-054	Pivot Pin	Freezer/Corrosion Resistant
8	RA 939-353-043	Grease Fitting	
9	RA 939-353-053	Pin	
	RA 939-353-056	Pin	Freezer/Corrosion Resistant
10	RA 939-353-052	Pin	
	RA 939-353-055	Pin	Freezer/Corrosion Resistant
11	RA 939-353-057	Pin, Weldment	
	RA 939-353-058	Pin, Weldment	Freezer/Corrosion Resistant
12	RA 939-353-251	Poly Caster Wheel	95A Durometer, Includes Bearings
	RA 939-353-251-XL	Poly Caster Wheel	97A Durometer, Includes Bearings
13	RA 939-353-264	Bearing	
14	RA 939-353-254	Axle Screw	
15	RA 939-353-253	Nut	
16	RA 939-352-259	Caster Assembly	Includes Items 12-15





888-999-7715  
[www.fastliftparts.com](http://www.fastliftparts.com)