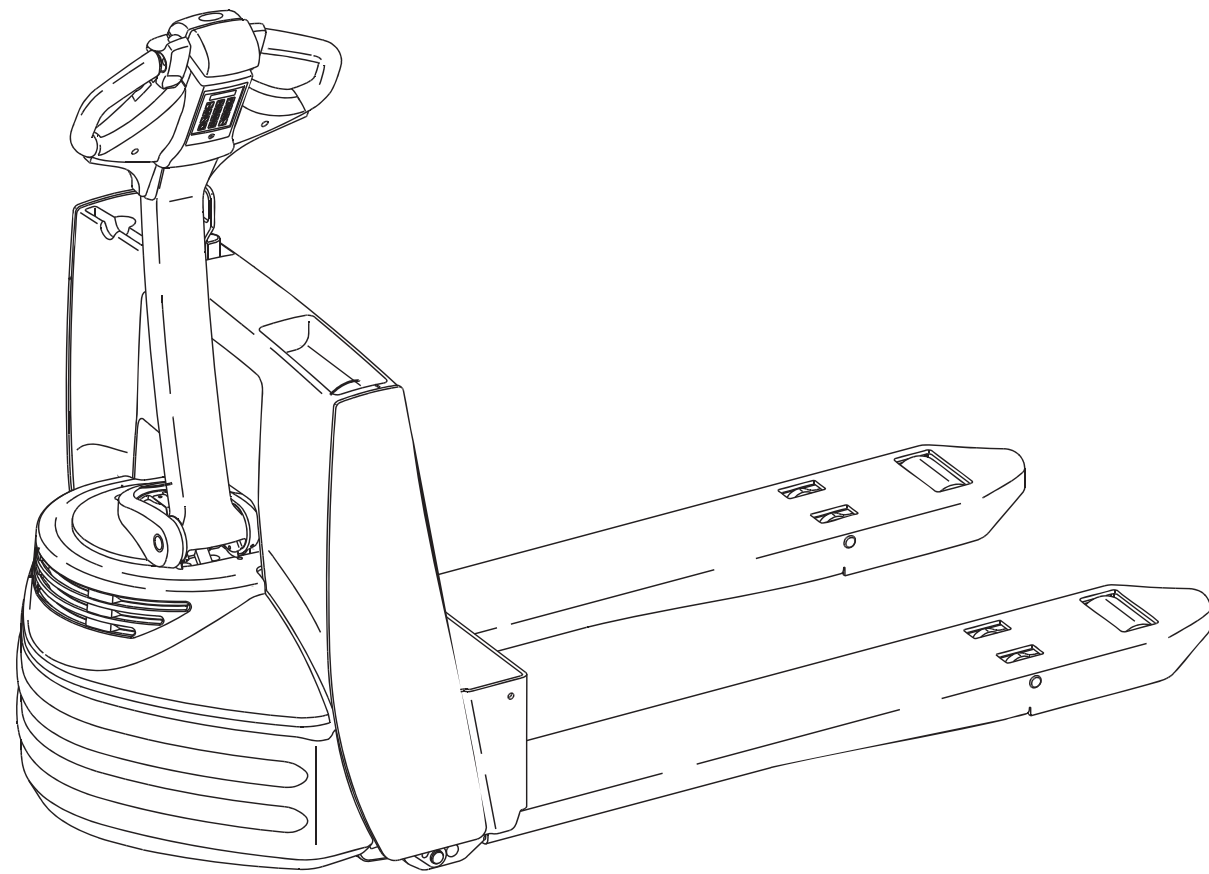


Replacement Parts for Prime Mover SMX45 Walkie



Fast Lift Parts

Contents

Quick Wheel Lookup	4
Electrical System Components Battery Connector, Motor Controllers	6
Drive Unit Drive Motor Parts, Brake Assembly	8
Control Handle Arm, Throttle Assembly	10
Hydraulic System	12
Frame and Undercarriage	14

Quick Wheel Lookup

Quick Wheel Lookup

OEM #	Description	Wheel OD in/mm	Tread Width in/mm	Hub Width in/mm	Hub ID in/mm	Bearing ID in/mm	Bearing #	Material/ Color	List Price	Net Price
PR 312651-001	Load Wheel, Poly 95A	3.25 / 82.5	4.00 / 101.5	4.50 / 114	2.047 / 52	0.984 / 25	BS62052RS	Scotch, 95A	\$ 19.50	\$ 12.00
PR 312636-000-A	Load Wheel Assembly, Poly 95A	3.25 / 82.5	4.00 / 101.5	4.50 / 114	2.047 / 52	0.984 / 25	BS62052RS	Scotch, 95A	25.14	14.00
PR 49910-05	Bearing (2RS)								4.45	1.00
PR 312678-000	Drive Tire, Smooth Flat Rubber	10.00 / 254	4.00 / 101.5	5.00 / 127	6.5 / 165.1			Rubber	72.00	59.00
PR 312678-002	Drive Tire, Smooth Flat Poly 95A	10.00 / 254	4.00 / 101.5	5.00 / 127	6.5 / 165.1			Poly, 95A	83.01	59.00
PR 312895-000	Drive Tire Hub								109.05	95.00
PR 313046-000	Lug Nut								3.77	2.00
PR 313945-000	Caster Wheel Assembly	2.50 / 63.5	2.375 / 60.25	2.375 / 60.25	1.181 / 35	0.50 / 12.70	BS16212RS	Poly, 95A	61.00	16.00

PR 312651-001
Load wheel , Poly, 95A



PR 49910-05
Bearing



PR 312678-002
Drive tire, Poly 95A



PR 313945-000
Caster wheel assembly



PR 312636-000-A
Load Wheel assembly Poly 95A
includes bearings, washers



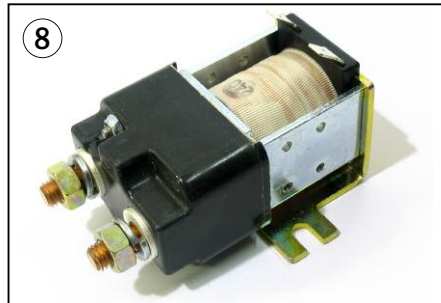
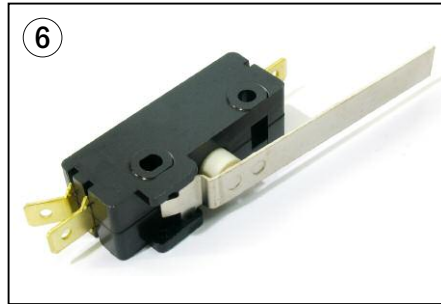
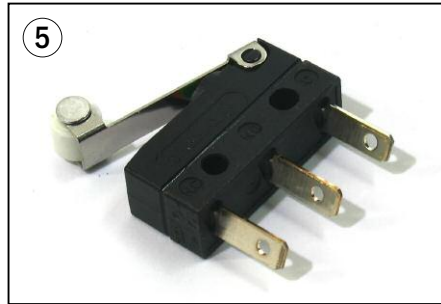
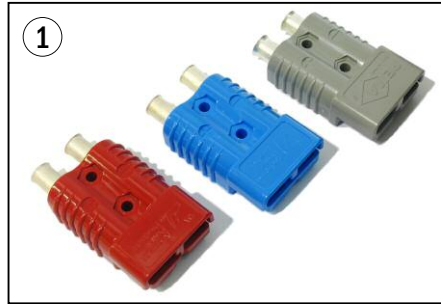
PR 312678-000
Drive tire, smooth flat rubber



PR 313046-000
Lug nut



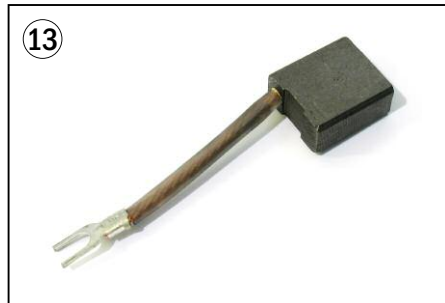
Electrical - Battery Connector, Motor Controllers



Electrical - Battery Connector, Motor Controllers

Item	Part No.	Description	List Price	Net Price
1	PR 49854-01	Battery Connector SB175 Gray	\$ 10.00	\$ 8.00
	PR 49854-04	Battery Connector SB175 Blue	10.00	8.00
	PR 49854-08	Battery Connector SB175 Red	11.00	8.00
2	PR 313151-000	Disconnect Handle, Inc Screws & Nuts	10.00	7.00
3	PR 305493-000	Master On/Off Switch	15.00	13.75
4	PR 302016-000	Key Switch, Inc. 2 Keys	32.00	28.50
5	PR 308030-000	Switch	6.50	5.75
6	PR 20208-01	Lift Limit Switch	10.00	8.25
7	PR 312668-001	Controller	575.00	525.00
8	PR 313066-000	Main Contactor	75.00	62.00
9	PR 309984-000	Relay	55.00	25.00
10	PR 301890-003	Circuit Breaker	42.00	37.00
11	PR 310456-000	Horn	62.00	59.00
12	PR 314408-000	Main Harness	239.00	215.00
13	PR 313436-000	Head Harness	95.00	83.45
14	PR 25275-12	Fuse, 10 Amp	8.12	6.50
15	PR 313202-000	Fuse, 80 Amp	6.00	1.50

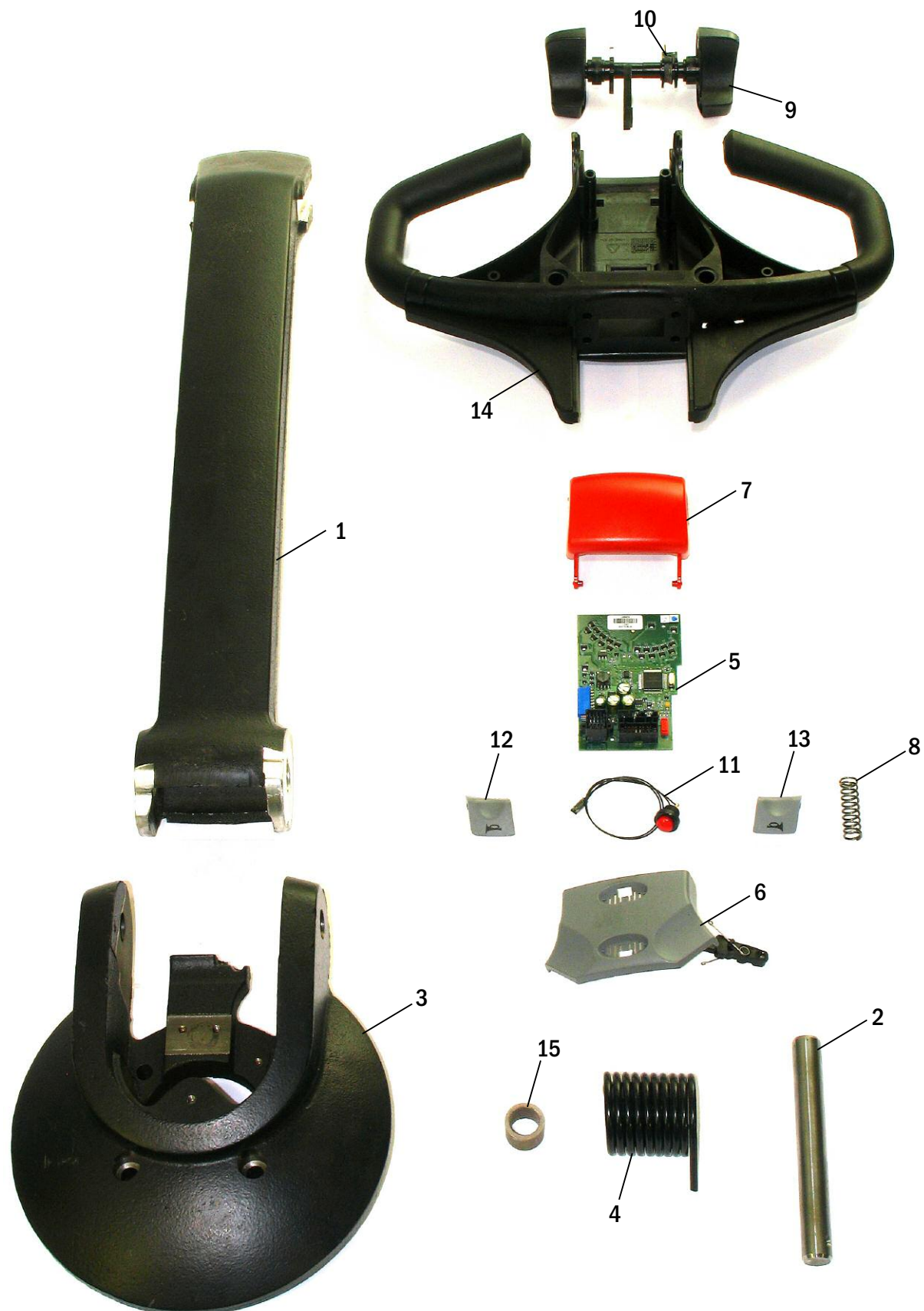
Drive Unit - Drive Motor Parts, & Brake



Drive Unit - Drive Motor Parts, & Brake

Item	Part No.	Description	List Price	Net Price
1	PR 312675-000	Drive Unit & Motor Assembly (not shown)	\$ 2,750.00	\$2,250.00
2	PR 313735-000	Drive Axle	137.50	124.00
3	PR 313736-000	Seal	19.02	17.00
4	PR 313737-000	Bearing, Drive Axle	26.25	10.00
5	PR 313778-000	Spacer	17.25	17.00
6	PR 313757-000	Armature (not shown)	1,739.14	1,375.00
7	PR 313756-000	Seal	25.75	24.50
8	PR 313755-000	Shim	3.00	2.75
9	PR 313754-000	Bearing	8.58	2.00
10	PR 313752-000	Field Coil	375.00	350.00
11	PR 313768-000	Bearing	8.17	2.50
12	PR 313763-000	Brush Holder	187.50	179.50
13	PR 313765-000	Brush	25.00	23.50
14	PR 313764-000	Spring	25.13	24.50
15	PR 313762-000	Cover	132.20	112.00
16	PR 313760-000	Band	49.00	47.50
17	PR 313738-000	Brake Assembly (not shown)	385.00	360.90

Control Handle - Arm, Throttle Assembly



Control Handle - Arm, Throttle Assembly

Item	Part No.	Description	List Price	Net Price
1	PR 312677-000	Handle Stem	\$ 129.17	\$ 106.25
2	PR 313067-000	Handle Stem Pin	14.56	13.25
3	PR 313048-000	Stem Mount	176.62	129.50
4	PR 312855-001	Return Spring	38.46	34.00
5	PR 314184-000	Control Card	525.00	455.00
6	PR 171666	Lift Lower Button	25.22	22.75
7	PR 171664	Reverse Button	36.97	16.15
8	PR 167836	Spring	2.75	2.50
9	PR 313051-000	Thumb Wheel Assembly	171.07	164.25
10	PR 167840	Spring	3.75	2.75
11	PR 171655	Horn Switch	34.50	32.25
12	PR 167847	Horn Button, Right	5.25	4.50
13	PR 167848	Horn Button Left	5.25	4.50
14	PR 313052-000	Handle	132.75	127.50
15	PR 313063-000	Bushing	10.00	8.00
16	PR 313053-000	Control Handle Assembly (not shown)	675.00	645.00

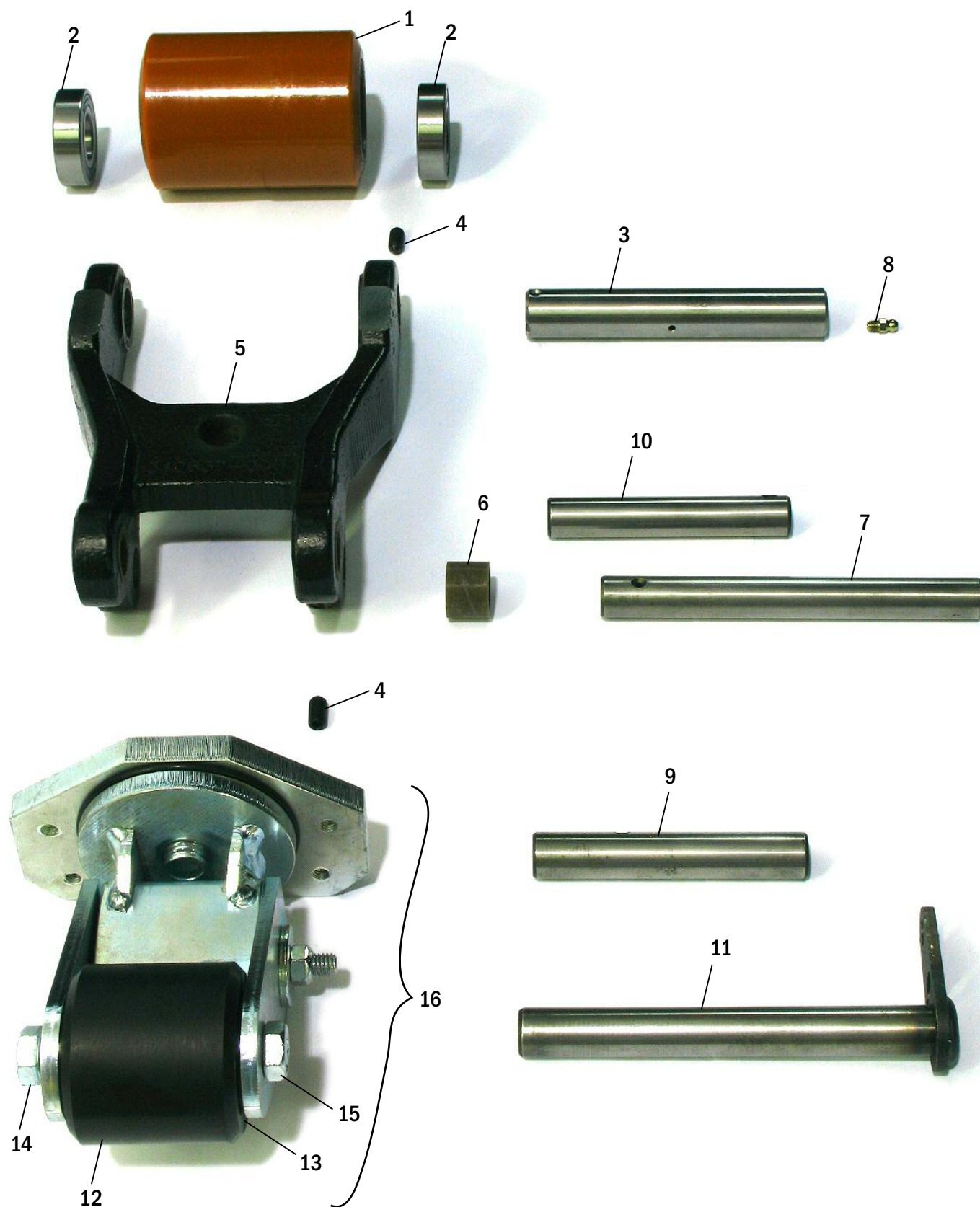
Hydraulic System



Hydraulic System

Item	Part No.	Description	List Price	Net Price
1	PR 312679-000	Lift Pump & Motor Assembly (not shown)	\$ 875.00	\$ 825.00
2	PR 313621-000	Pump Motor Assembly	325.00	295.50
3	PR 313694-000	Brush & Spring Kit	79.00	78.25
4	PR 313695-000	Bearing	26.50	5.00
5	PR 313615-000	Pump Kit (not shown)	495.00	475.00
6	PR 308203-000	Solenoid	43.78	12.00
7	PR 300131-000	Release Valve Kit (not shown)	265.00	299.50
8	PR 313557-000	Lift Cylinder Assembly	245.00	269.50
9	PR 23084-00	Seal Kit	72.50	36.00

Frame and Undercarriage



Frame and Undercarriage

Item	Part No.	Description	List Price	Net Price
1	PR 312636-000	Load wheel, Poly 95A	\$ 19.50	\$ 12.00
2	PR 49910-05	Bearing	6.00	1.00
3	PR 4312650-000	Load Wheel Axle	13.70	8.00
	PR 313185-000	Load Wheel Axle, Cold Storage	45.32	14.00
4	PR 301740-003	Set Screw	1.50	0.75
5	PR 312638-000	Wheel Fork	67.00	59.00
6	PR 312672-000	Bushing	3.55	2.75
7	PR 312651-000	Pivot Pin	14.00	12.00
	PR 312651-003	Pivot Pin, Cold Storage	32.00	18.00
8	PR 311390-000	Grease Fitting	1.00	0.50
9	PR 312651-002	Pin	10.75	8.00
	PR 312651-005	Pin, Cold Storage	42.76	18.00
10	PR 312651-001	Pin	12.09	6.00
	PR 312651-004	Pin, Cold Storage	42.65	18.00
11	PR 312666-000	Pin	31.64	20.00
	PR 312666-001	Pin, Cold Storage	48.43	32.00
12	PR 313945-000	Caster Wheel	61.00	16.00
13	PR 313958-000	Bearing	10.22	2.00
14	PR 313948-000	Axle Screw	2.17	1.00
15	PR 313947-000	Nut	1.77	0.45
16	PR 313729-001	Caster Assembly	375.25	335.95



888-999-7715
www.fastliftparts.com