

## How to Remove and Replace the Lid Switch

### Before starting ...

Ensure that the power lead is disconnected and remove the hinge cover, turntable and catch tray to allow access to the switch from underneath

### What you'll need

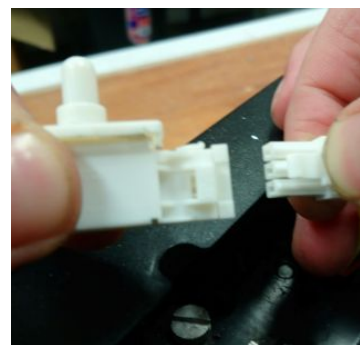
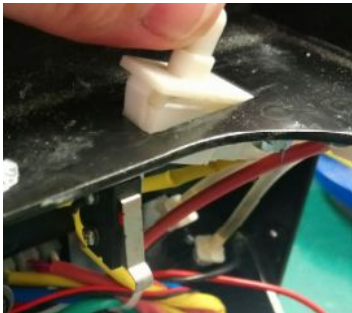
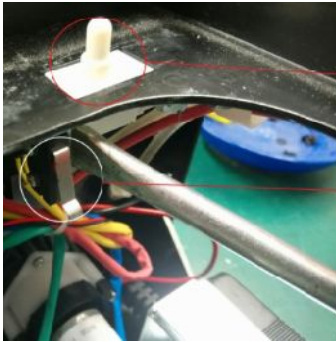
Small flat screwdriver

### Instructions

Insert the flat screwdriver into the gap between the two switches and gently twist in a clockwise direction. This pops the switch up and you can now push on the connector clip and disconnect it.

Insert the new one into the connector until it's secure and reinsert the switch back into the hole until it clicks into place

Without replacing this faulty switch the machine will not start



These parts are available through our website here